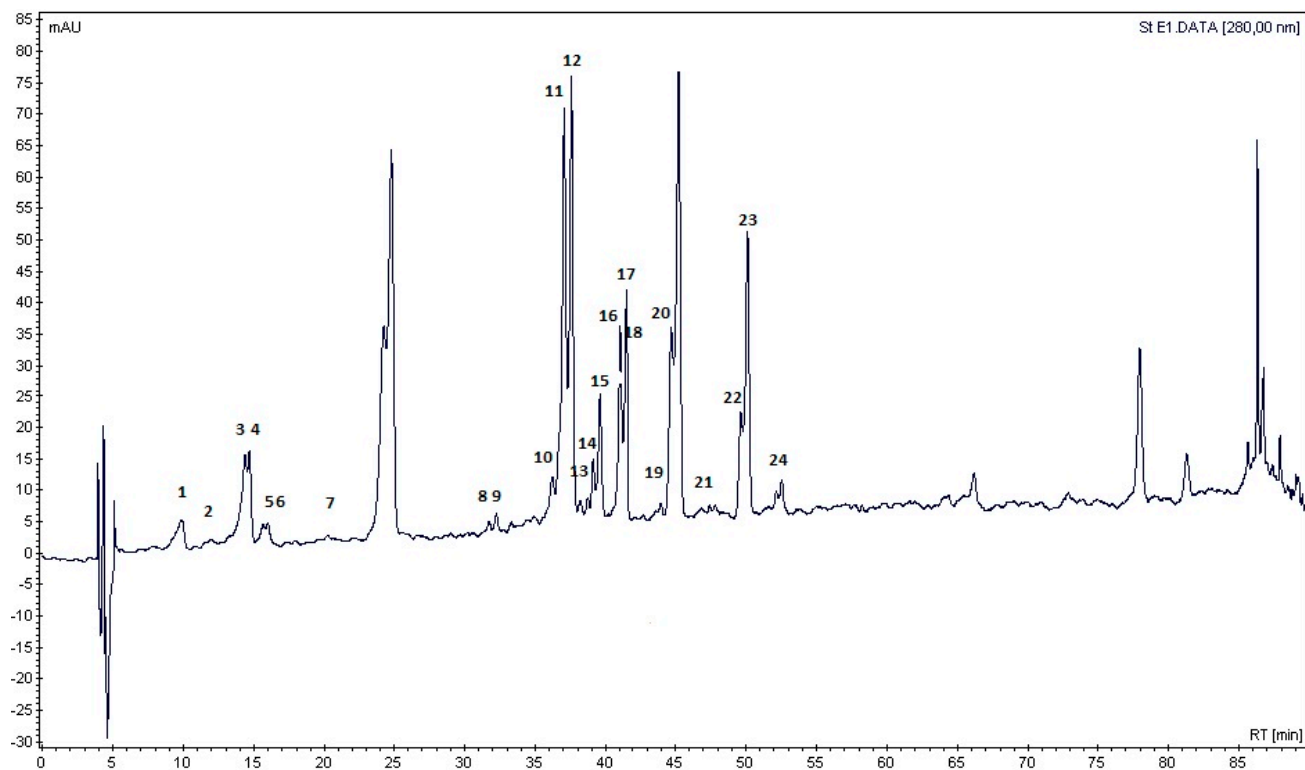


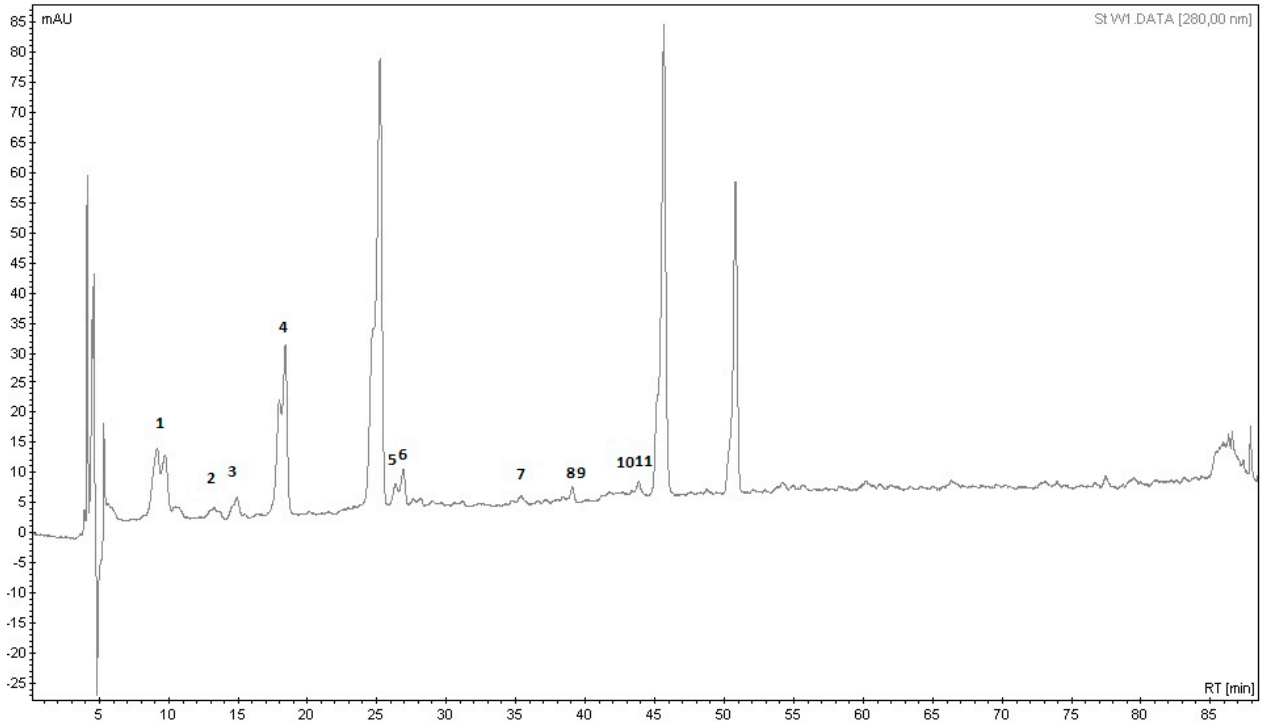
Supplementary Materials

Stevia ethanol



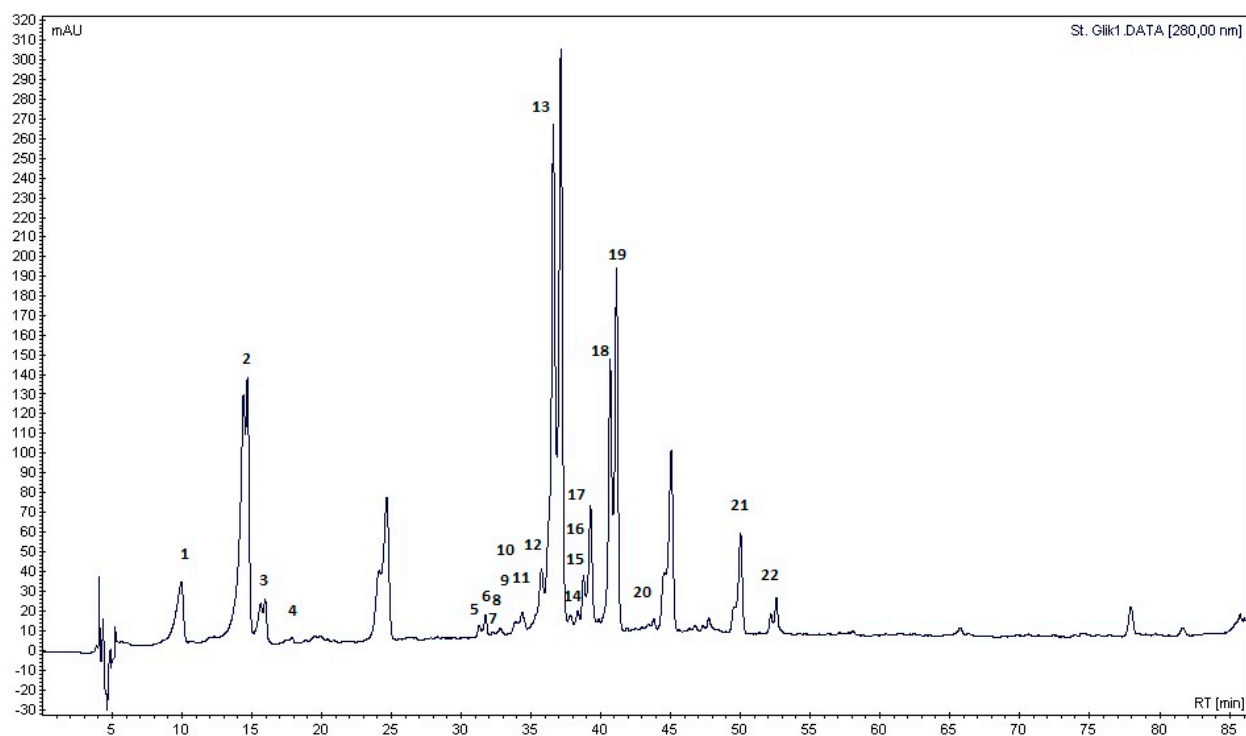
1. Chlorogenic acid derivatives; 2. Epicatechin; 3. Chlorogenic acid; 4. Caffeic acid; 5. Caffeic acid derivatives; 6. Caffeic acid derivatives; 7. Catechin derivatives; 8. Luteolin derivatives; 9. Luteolin; 10. Rosmaric acid derivatives; 11. Ferulic acid; 12. Ferulic acid; 13. Rosmaric acid derivatives; 14. Rosmaric acid derivatives; 15. Rutin derivatives; 16. Campherol derivatives; 17. Rosmaric acid derivatives; 18. Rosmaric acid; 19. Benzoic acid derivatives; 20–24. Benzoic acid derivatives.

Stevia aqueous



1. Protocatechuic acid; 2. Catechin; 3. Catechin derivatives; 4. Caffeic acid; 5. Caffeic acid derivatives; 6. Caffeic acid derivatives; 7. Benzoic acid derivatives; 8. Salicylic acid derivatives; 9. Benzoic acid derivatives; 10. Benzoic acid derivatives; 11. Salicylic acid derivatives.

Stevia glycolic-aqueous mixture (1:4)



1. Caffeic acid derivates; 2. Ferulic acid derivates; 3. Caffeic acid; 4. Caffeic acid derivates; 5. Luteolin derivates; 6. Rutin; 7. Luteolin derivates; 8. Luteolin derivates; 9. Luteolin derivates; 10. Luteolin derivates; 11. Luteolin derivates; 12. Ferulic acid derivates; 13. Ferulic acid derivates; 14. Rozmaric acid derivates; 15. Rozmaric acid derivates; 16. Campherol acid derivates; 17. Rutin derivates; 18–22. Rozmaric acid derivates.