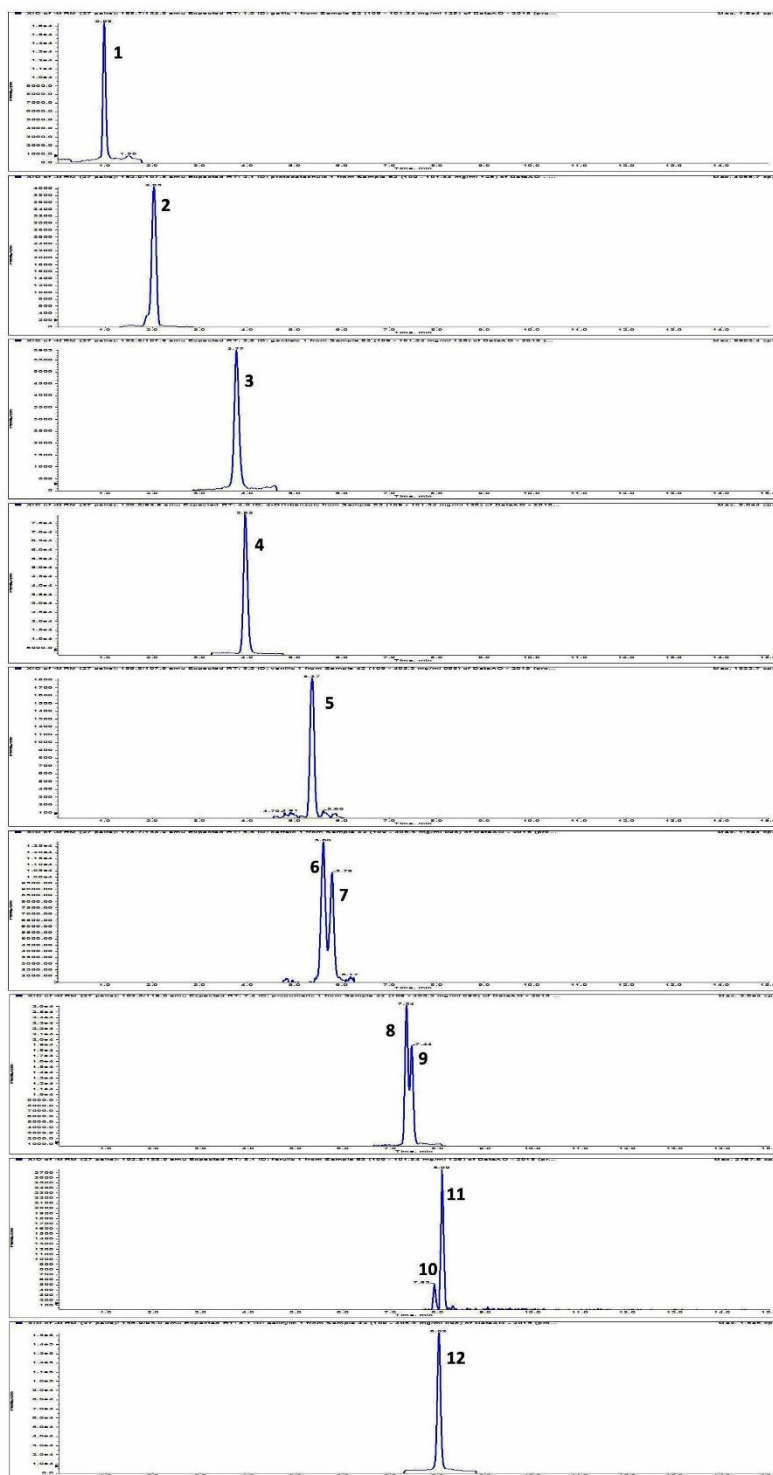


## supplementary materials



**Figure S1.** Exemplary LC-MS/MS chromatogram of phenolic acids from precooked buckwheat pasta. **1.** gallic acid, **2.** protocatechuic acid, **3.** gentisic acid, **4.** 4-OH-benzoic acid, **5.** vanilic acid, **6.** *trans*-caffeic acid, **7.** *cis*-caffeic acid, **8.** *trans*-*p*-coumaric acid, **9.** *cis*-*p*-coumaric acid, **10.** *trans*-ferulic acid, **11.** *cis*-ferulic acid, **12.** salicylic acid

