

Synthesis of polycyclic ether-benzopyrans and *in vitro* inhibitory activity against *Leishmania tarentolae*

Sarita Singh, Jacob P. Grabowski, Shilpa Pohani, C. Fiore Apuzzo, David C. Platt, Marjorie A. Jones* and T. Andrew Mitchell*

Department of Chemistry, Illinois State University, Campus Box 4160, Normal, IL 61790-4160;

mitchell@ilstu.edu

Supporting Information

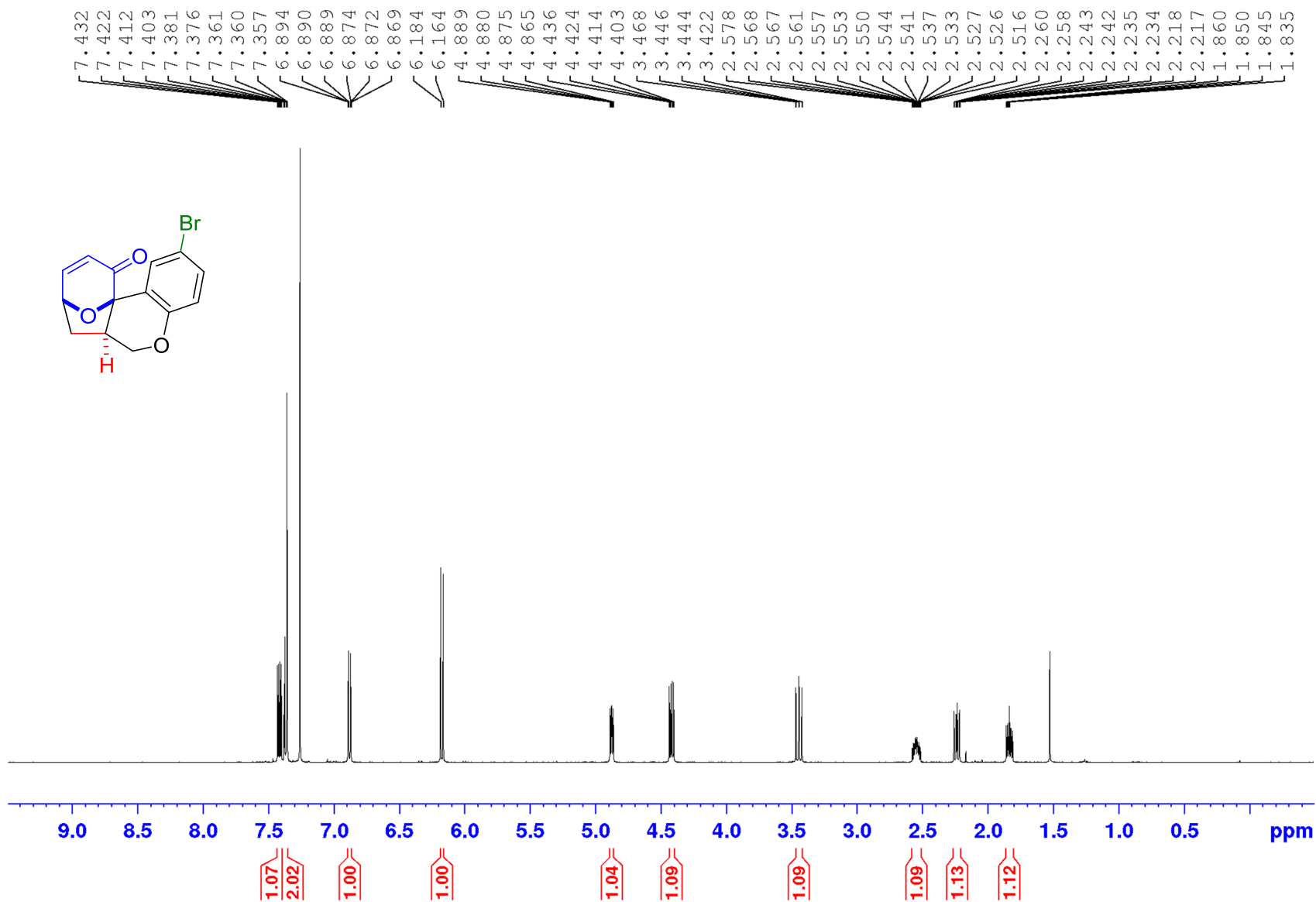


Figure S1: $^1\text{H NMR}$ (500 MHz) of 7 in CDCl_3

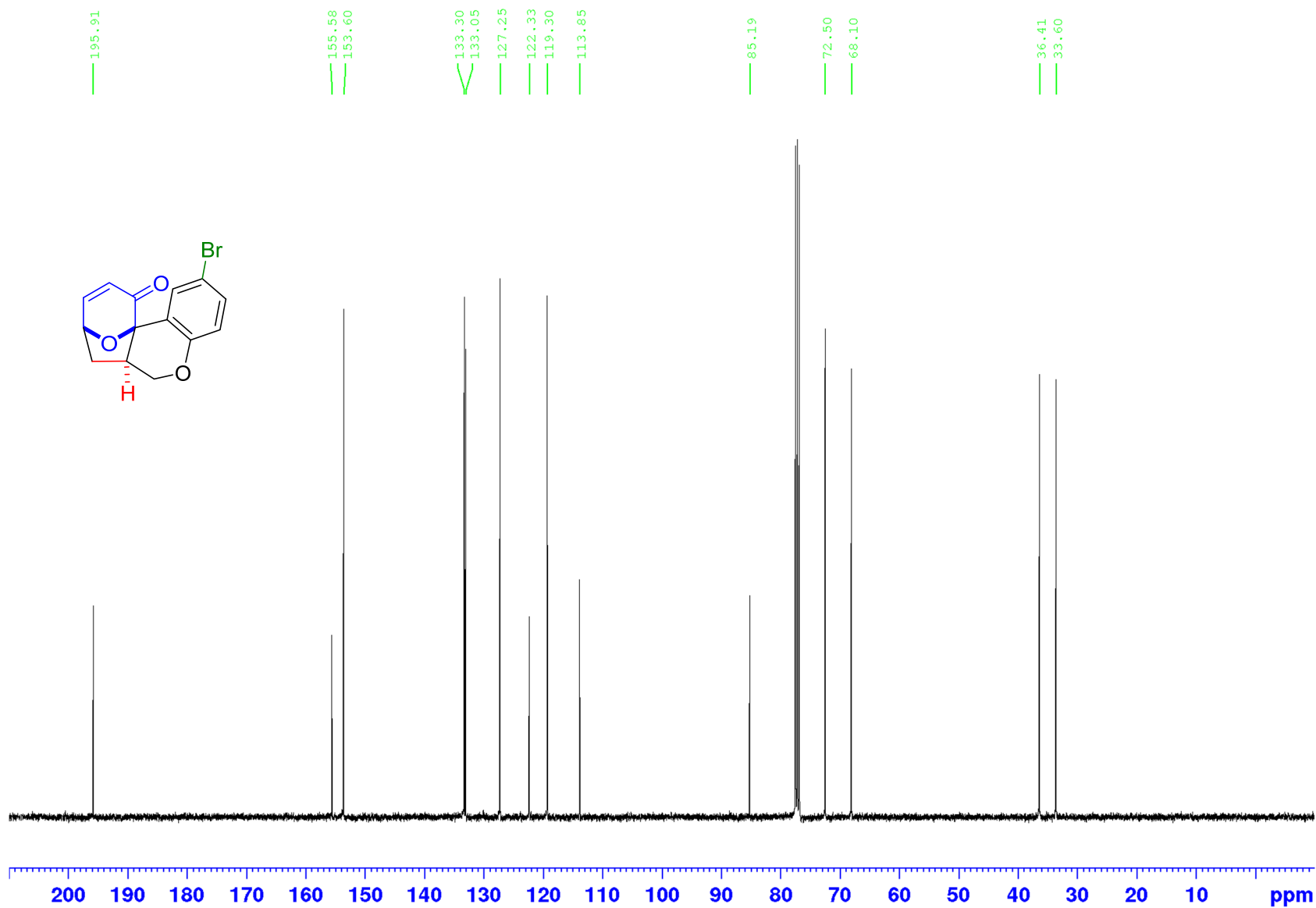


Figure S2: ^{13}C NMR (100 MHz) of 7 in CDCl_3

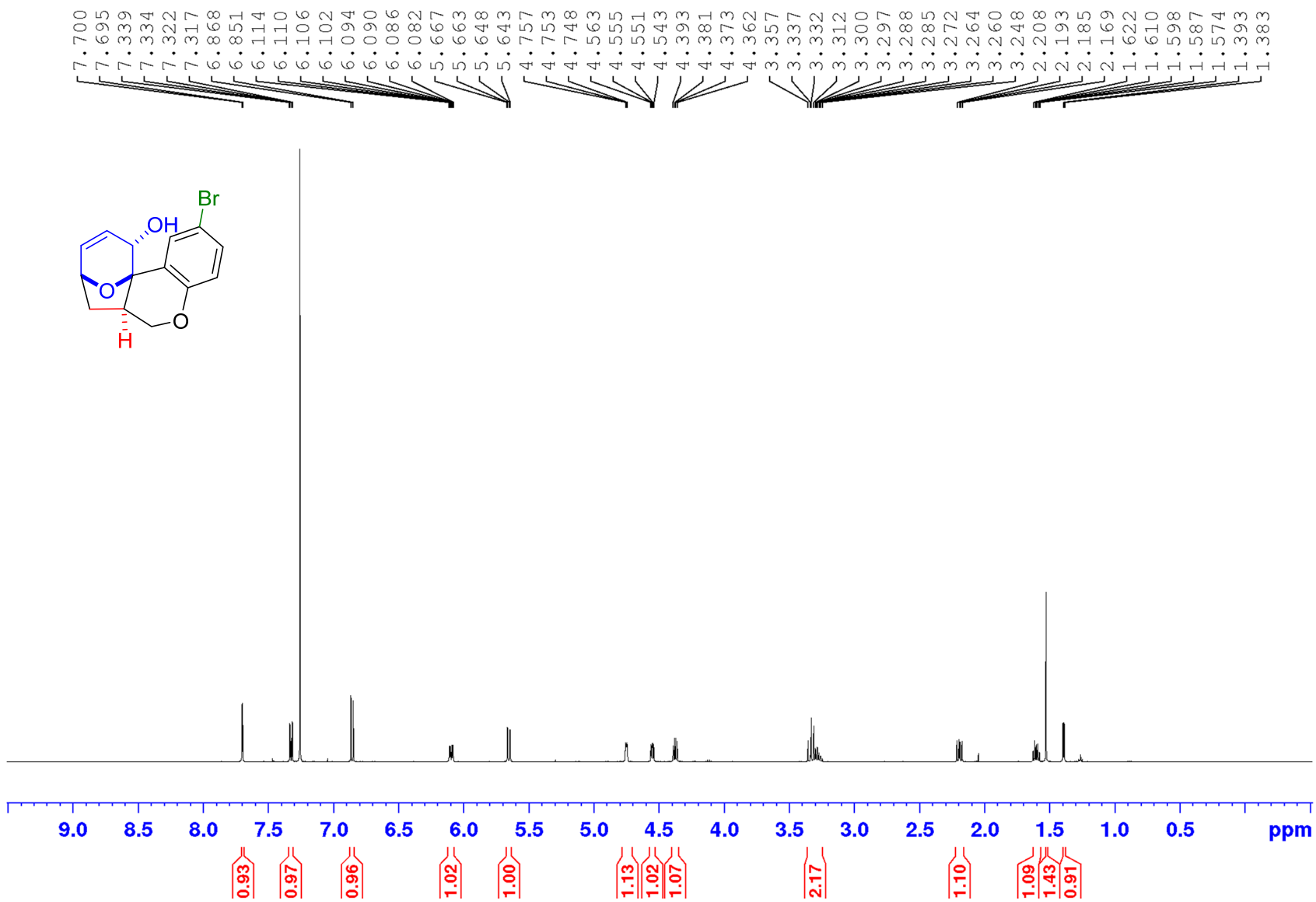


Figure S3: ¹H NMR (500 MHz) of 6 in CDCl₃

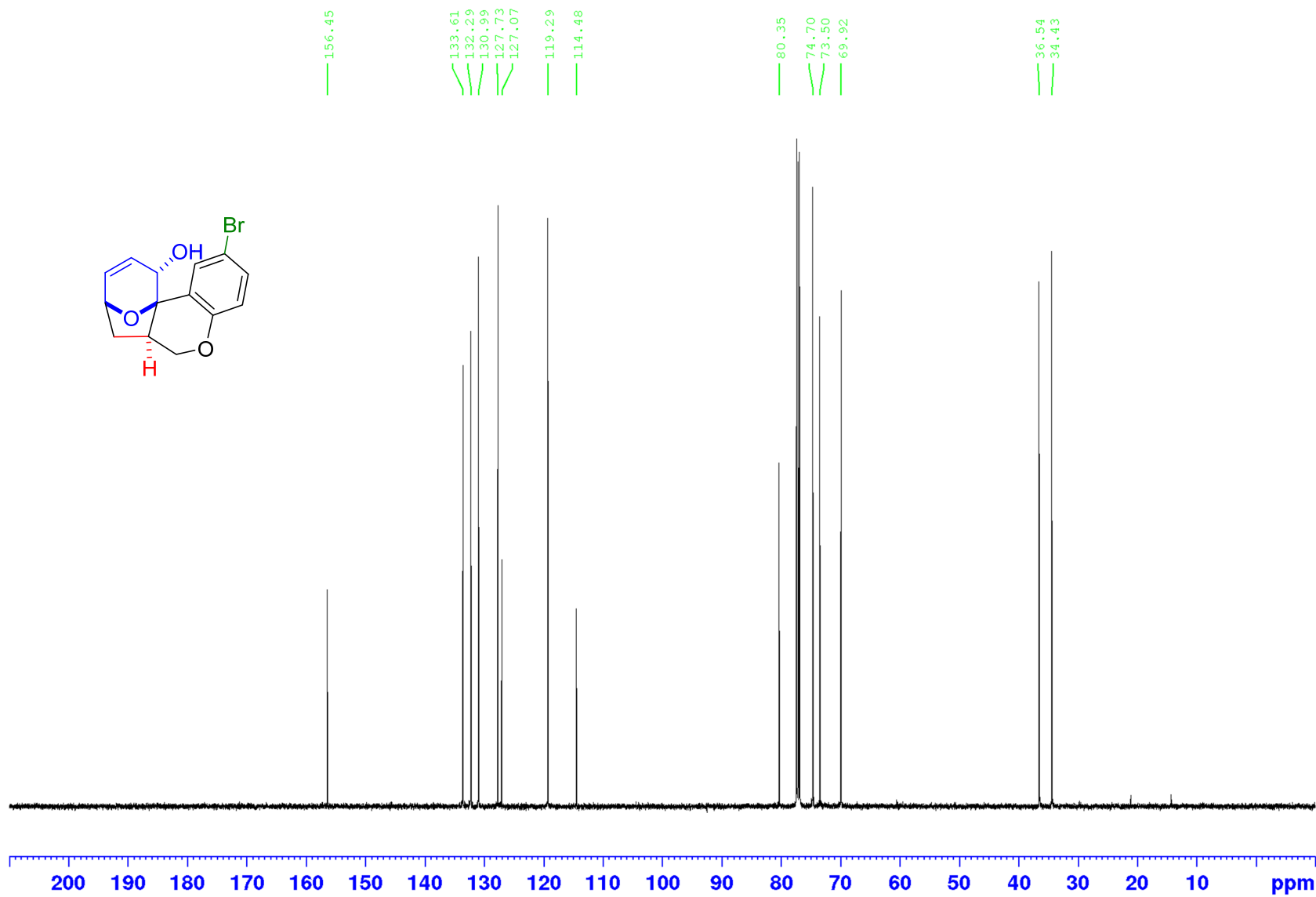


Figure S4: ¹³C NMR (125 MHz) of 6 in CDCl₃

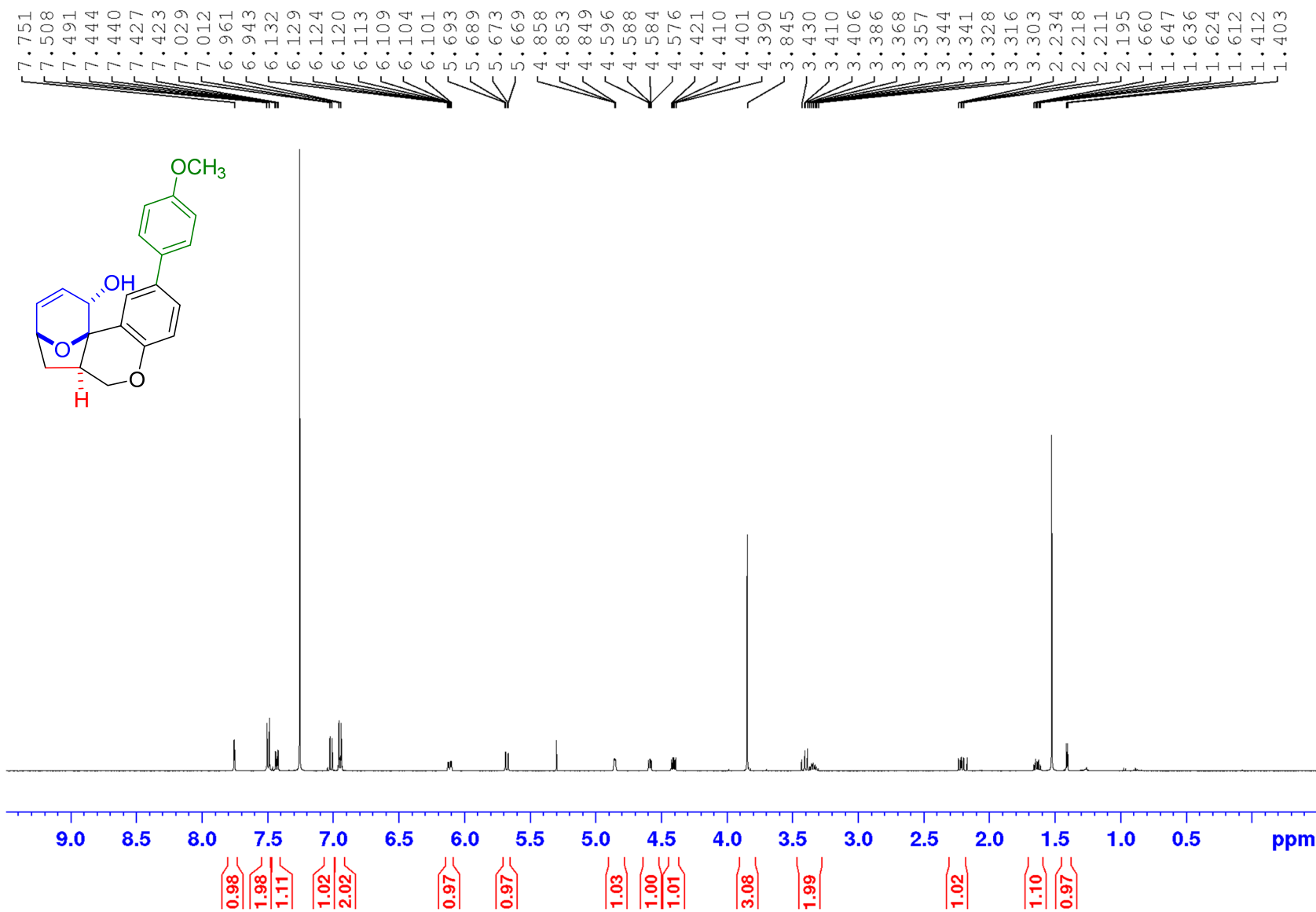


Figure S5: ¹H NMR (400 MHz) of 1a in CDCl₃

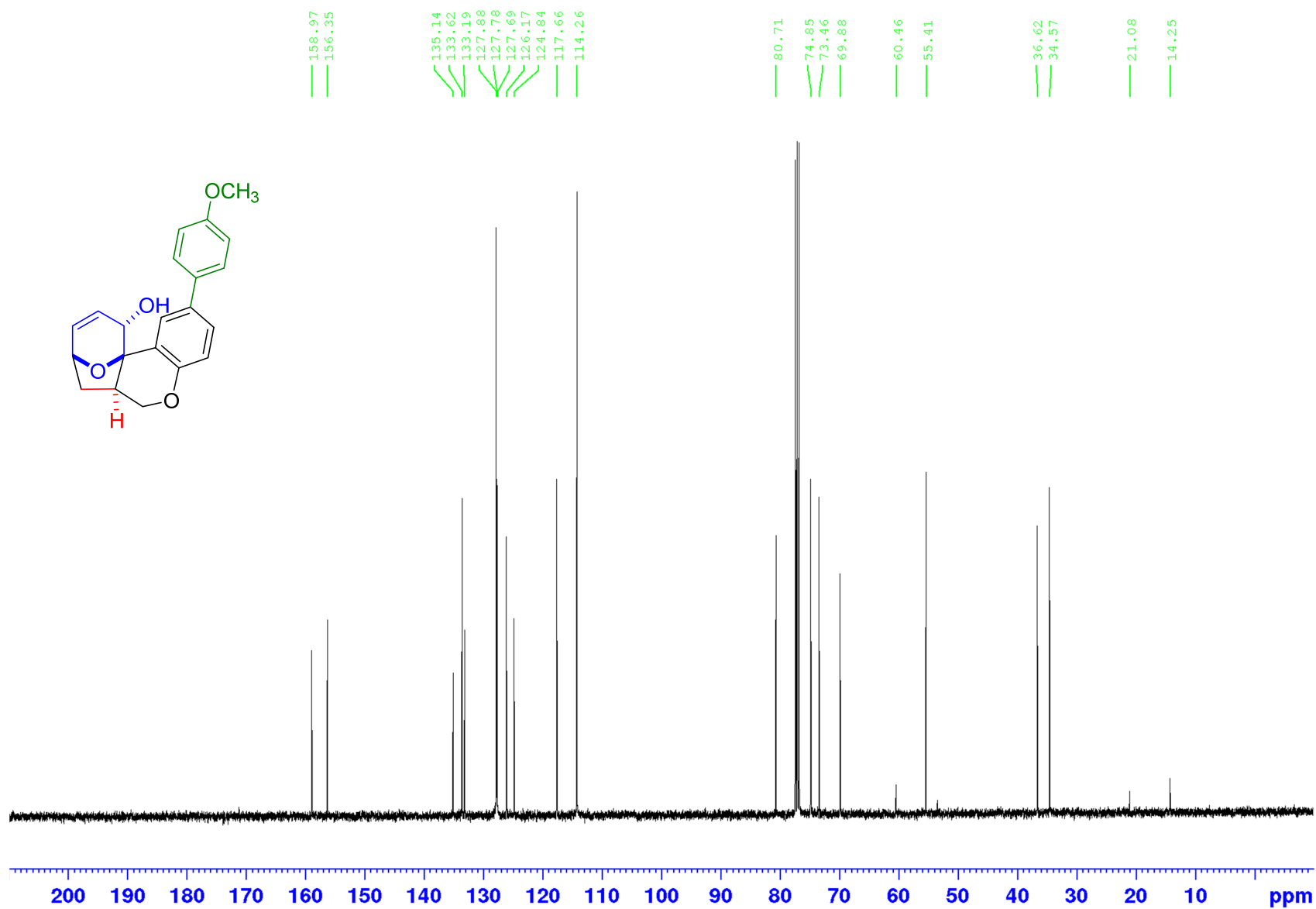


Figure S6: ¹³C NMR (100 MHz) of 1a in CDCl₃

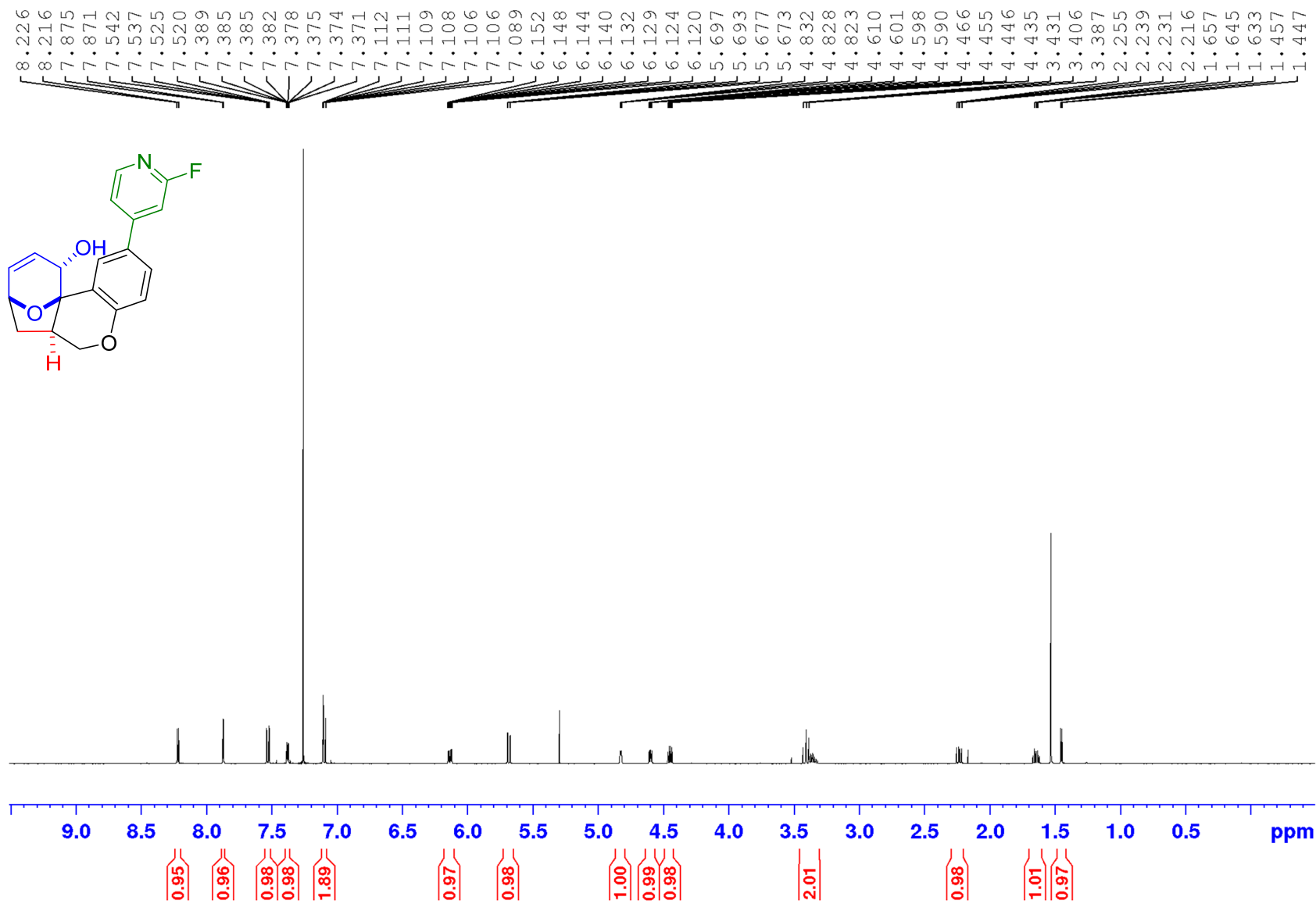


Figure S7: ¹H NMR (500 MHz) of 1b in CDCl₃

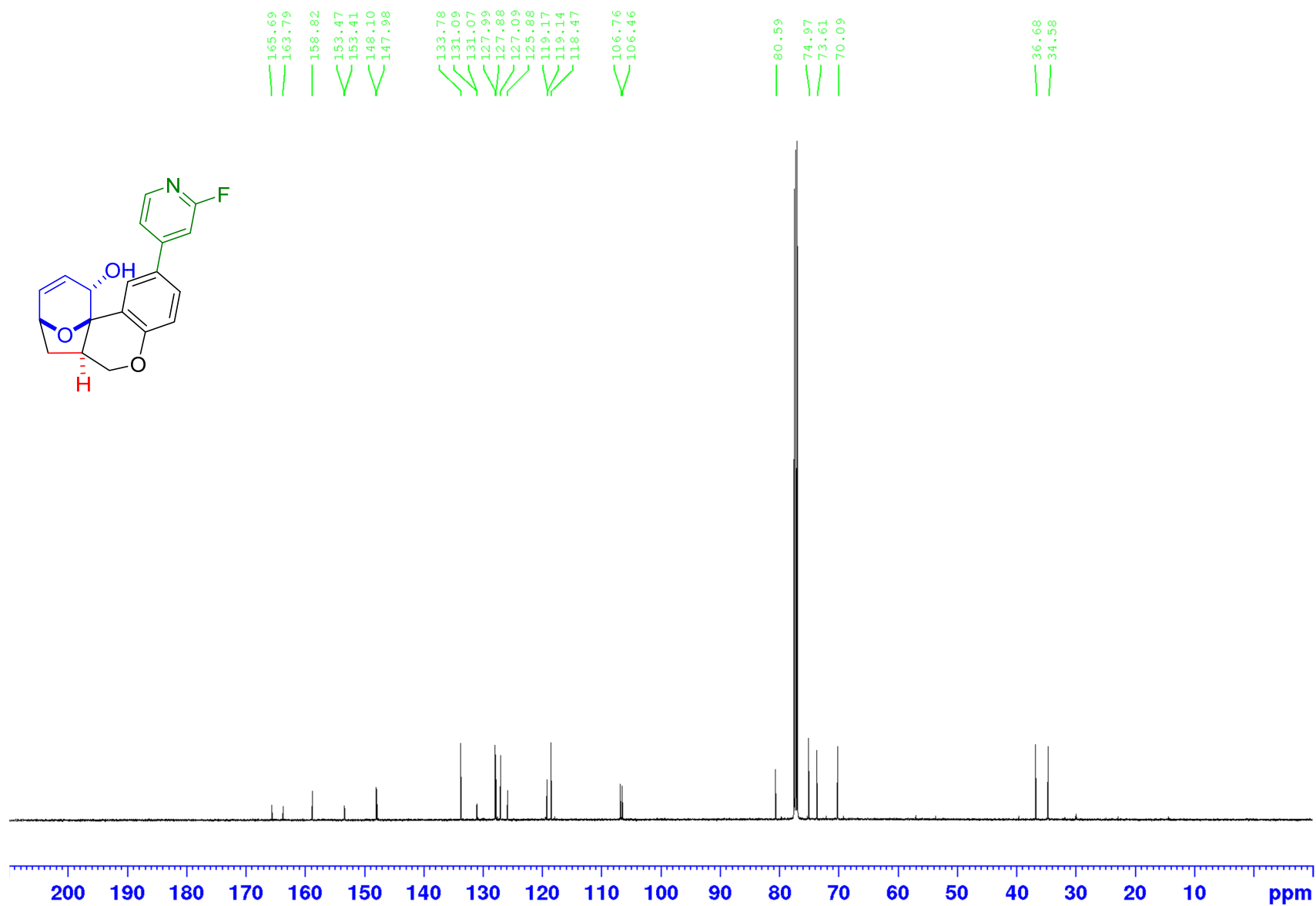


Figure S8: ¹³C NMR (125 MHz) of 1b in CDCl₃

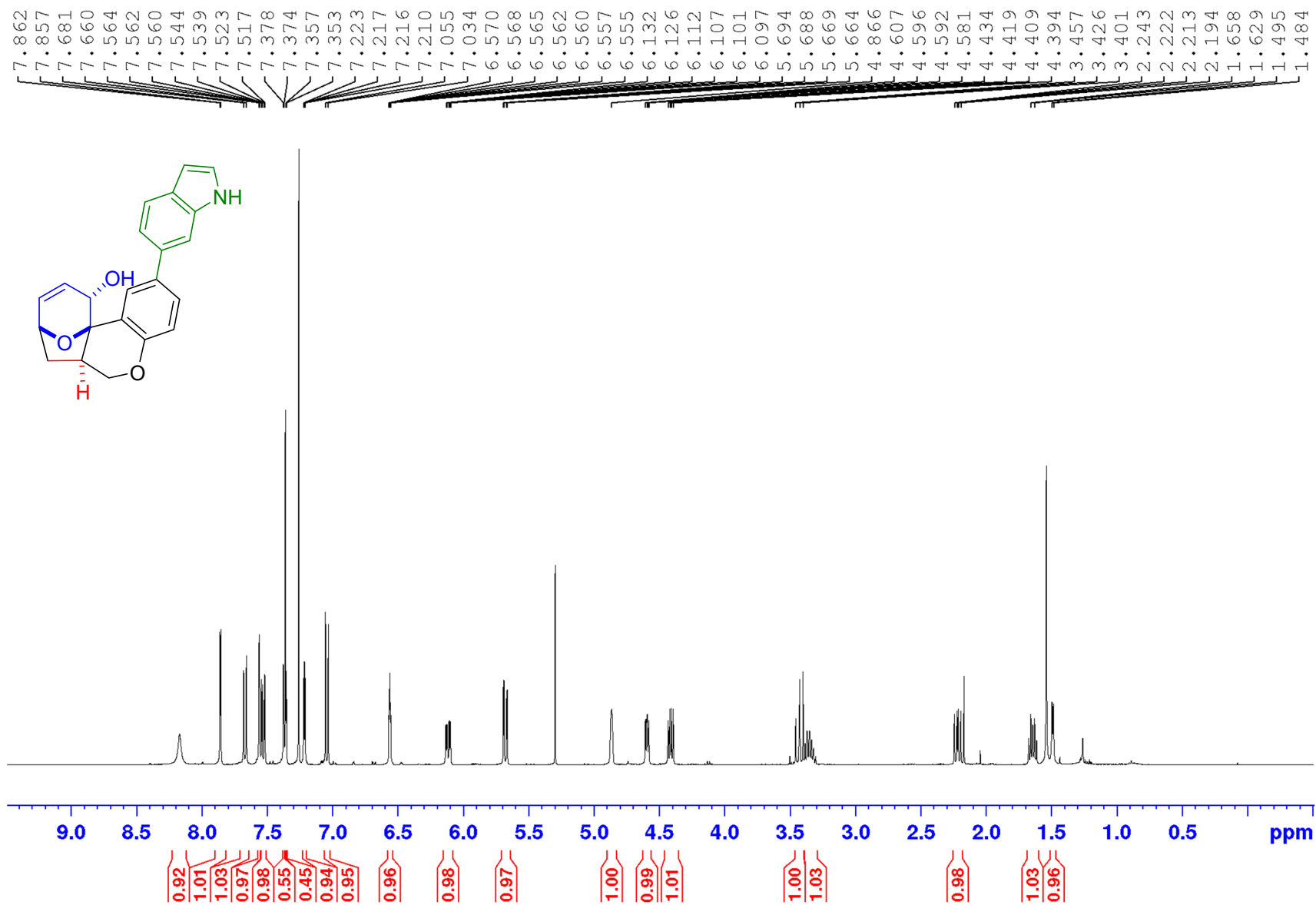


Figure S9: ¹H NMR (500 MHz) of 1c in CDCl₃

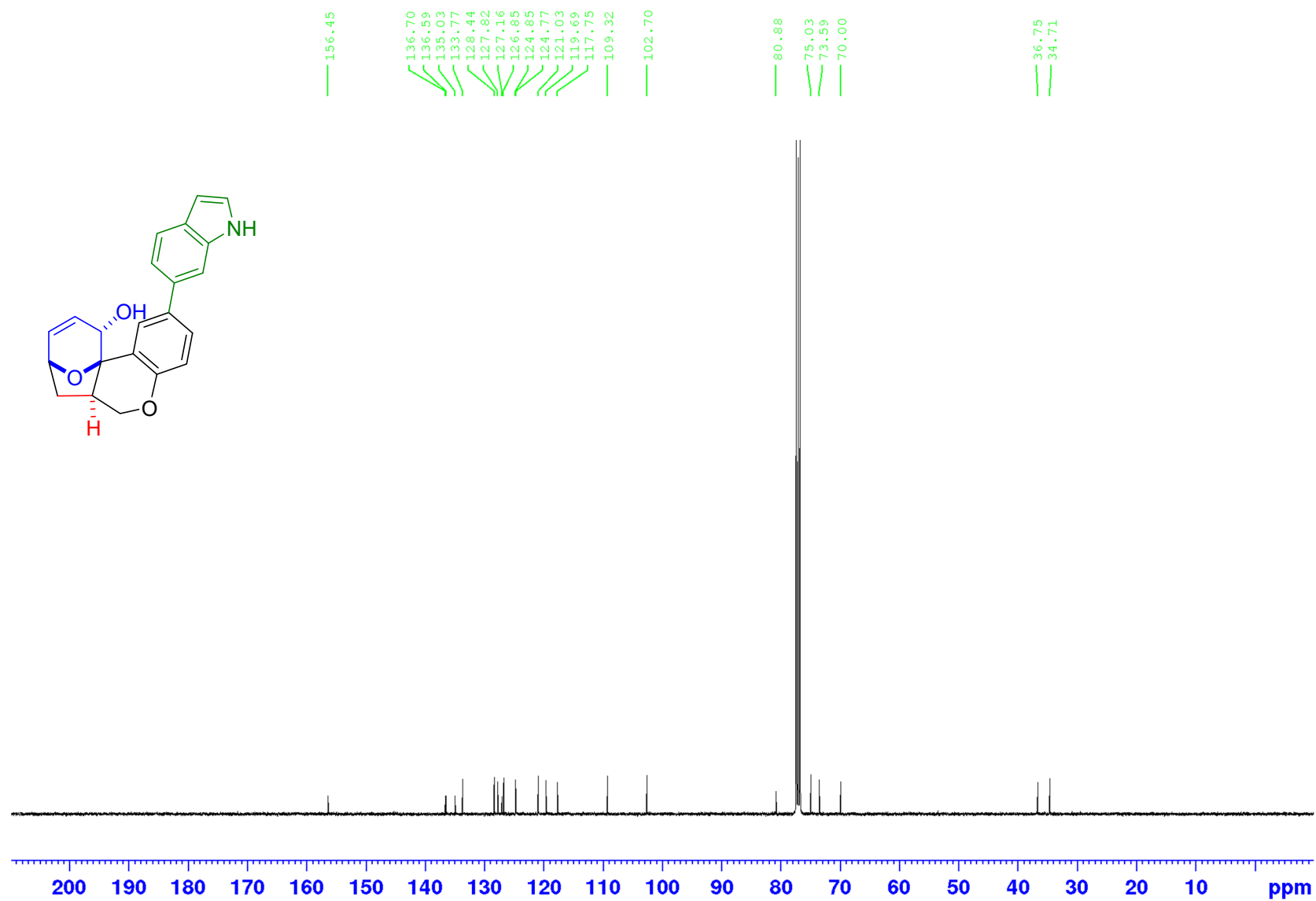


Figure S10: ^{13}C NMR (125 MHz) of 1c in CDCl_3

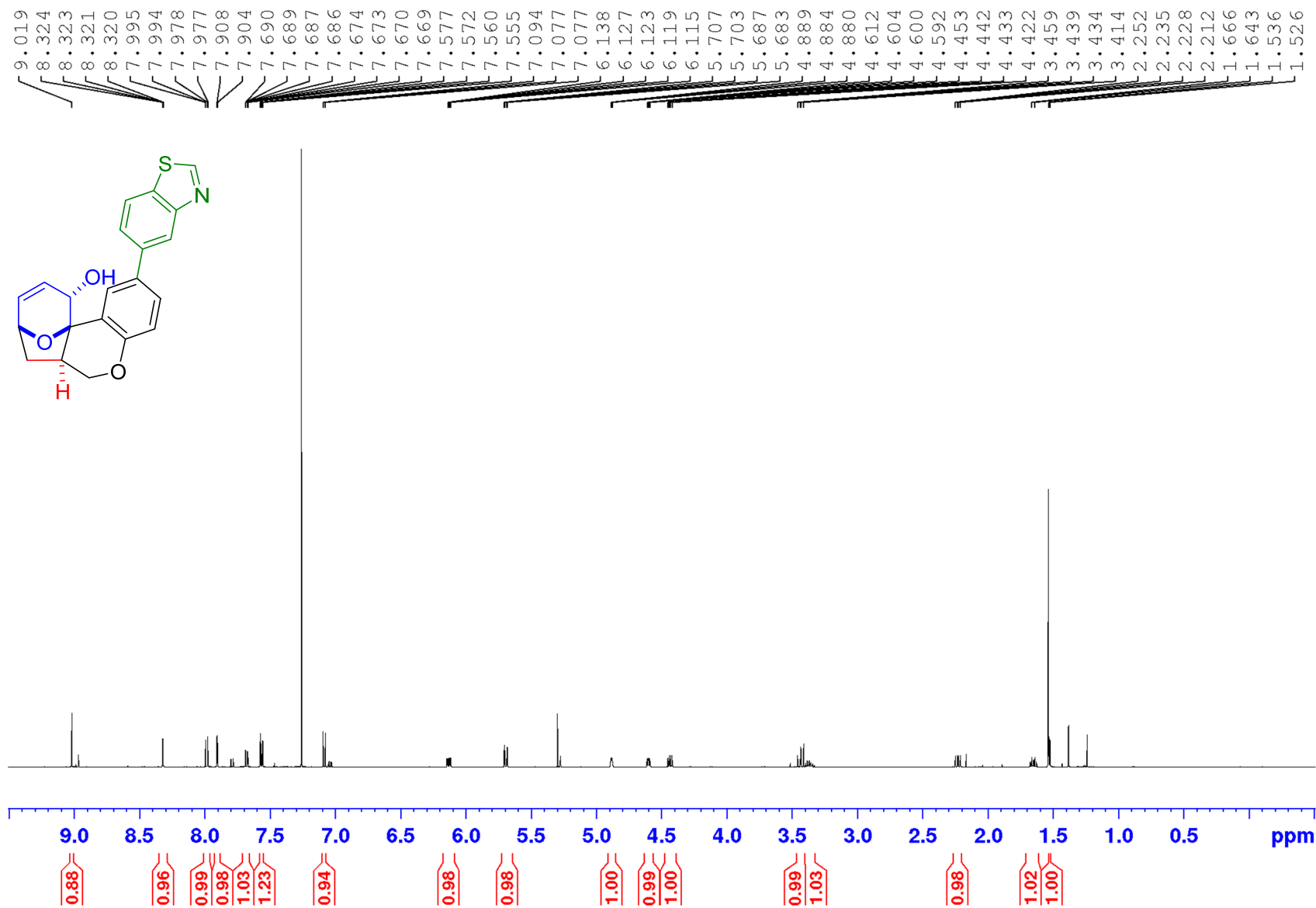


Figure S11: ¹H NMR (500 MHz) of 1d in CDCl₃

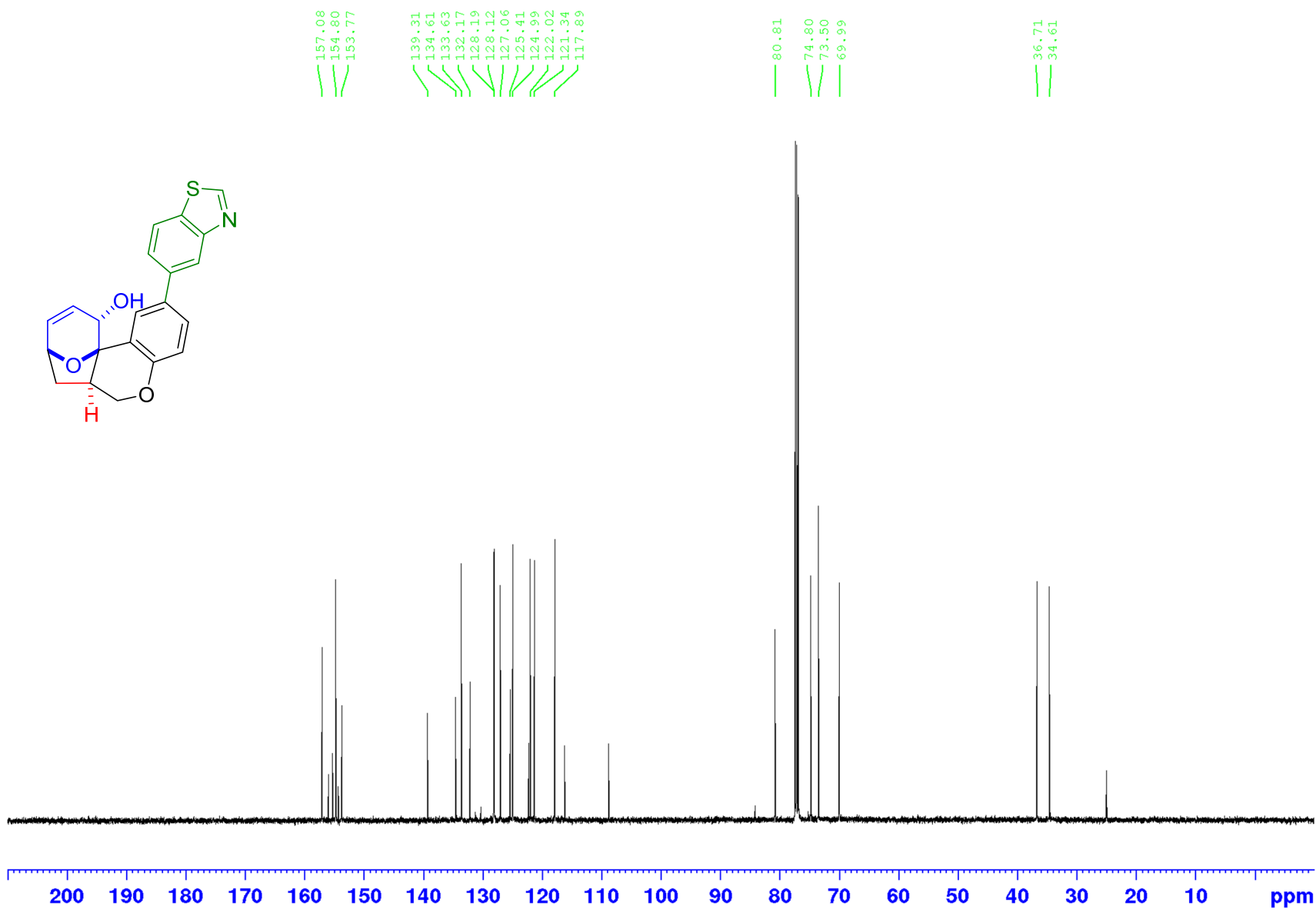


Figure S12: ^{13}C NMR (125 MHz) of 1d in CDCl_3

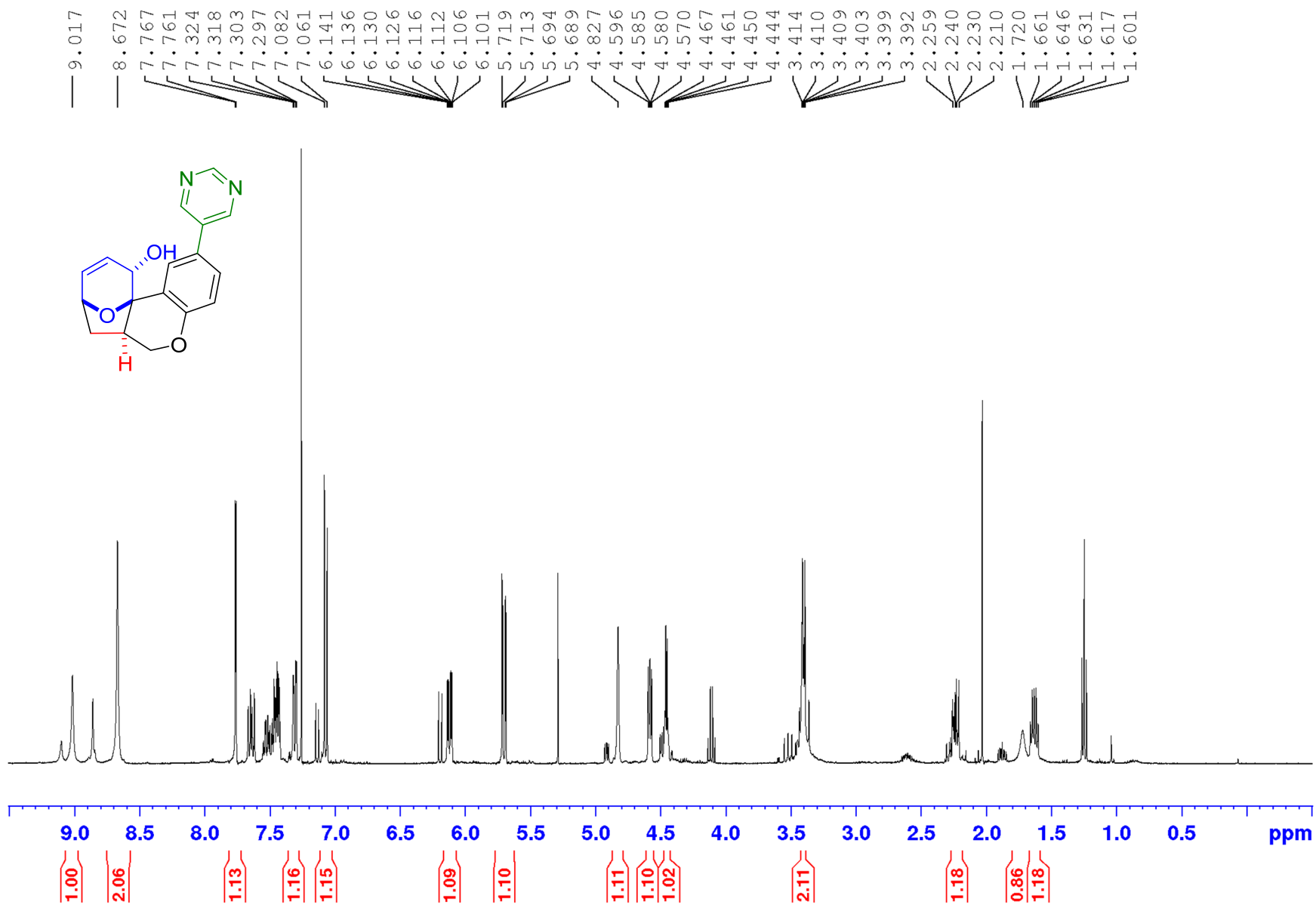


Figure S13: ^1H NMR (500 MHz) of 1e in CDCl_3

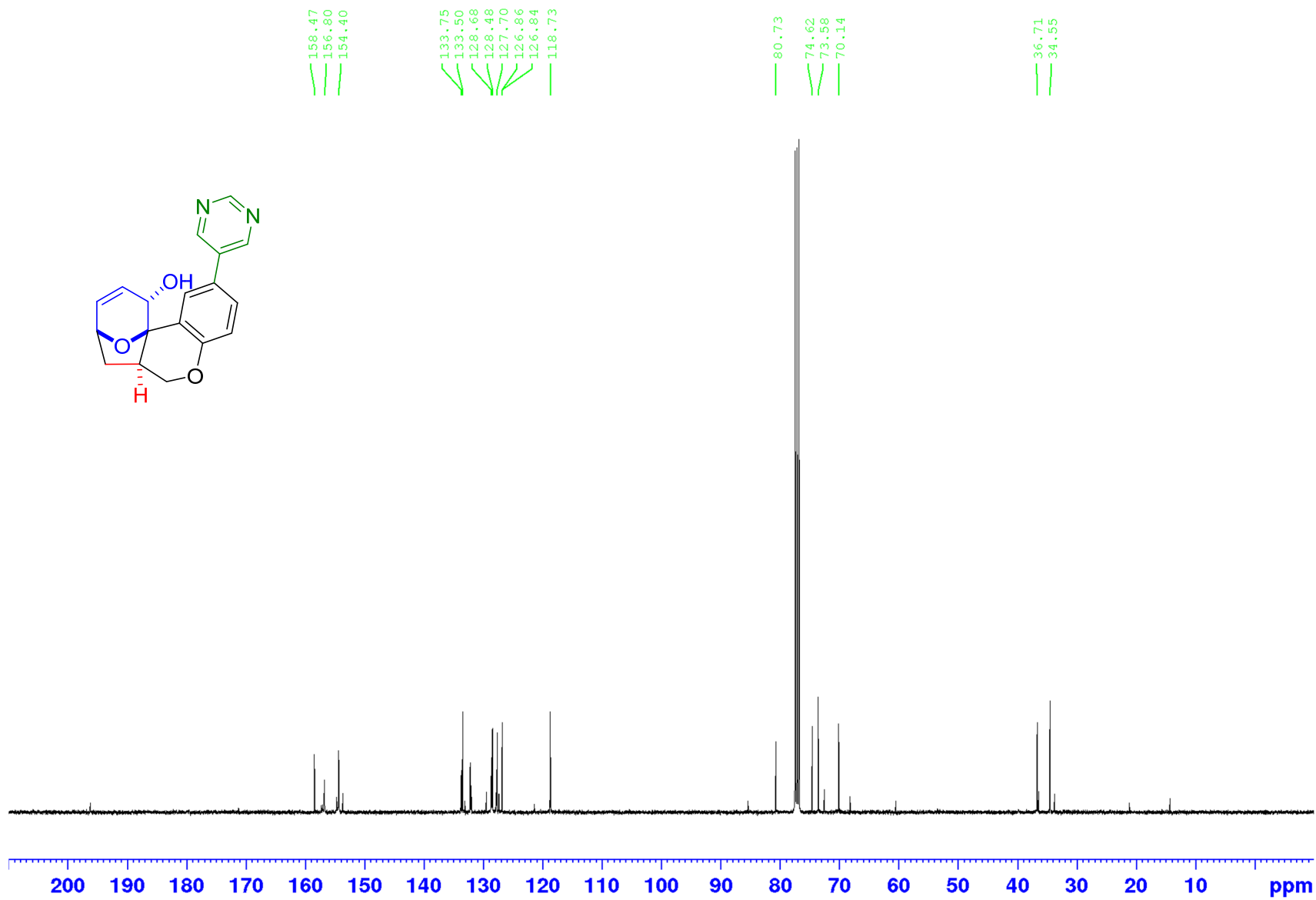


Figure S14: ¹³C NMR (125 MHz) of 1e in CDCl₃

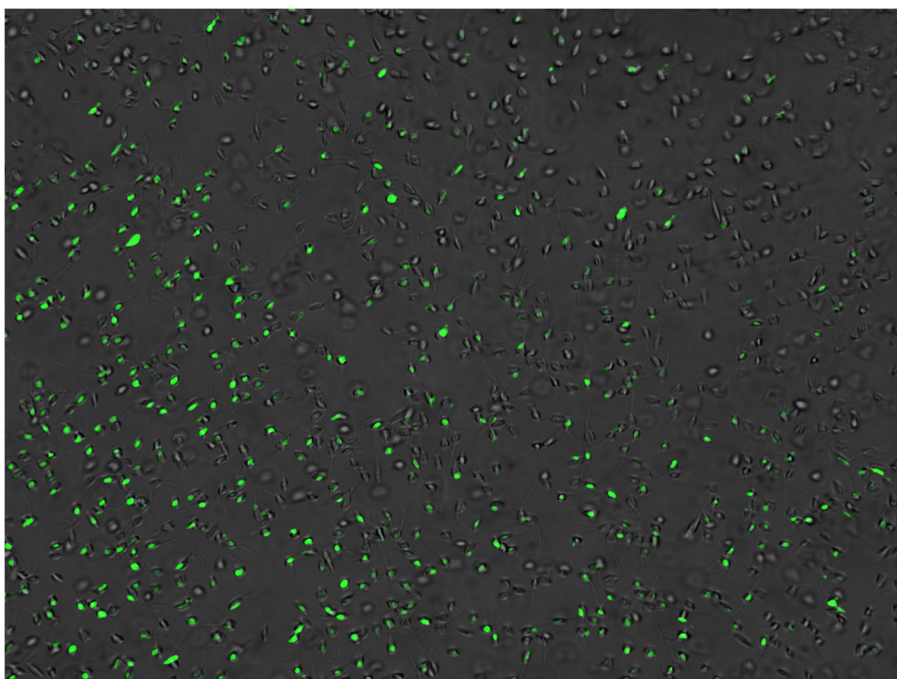


Figure S15. Overlay image of 1% DMSO control cell pool.

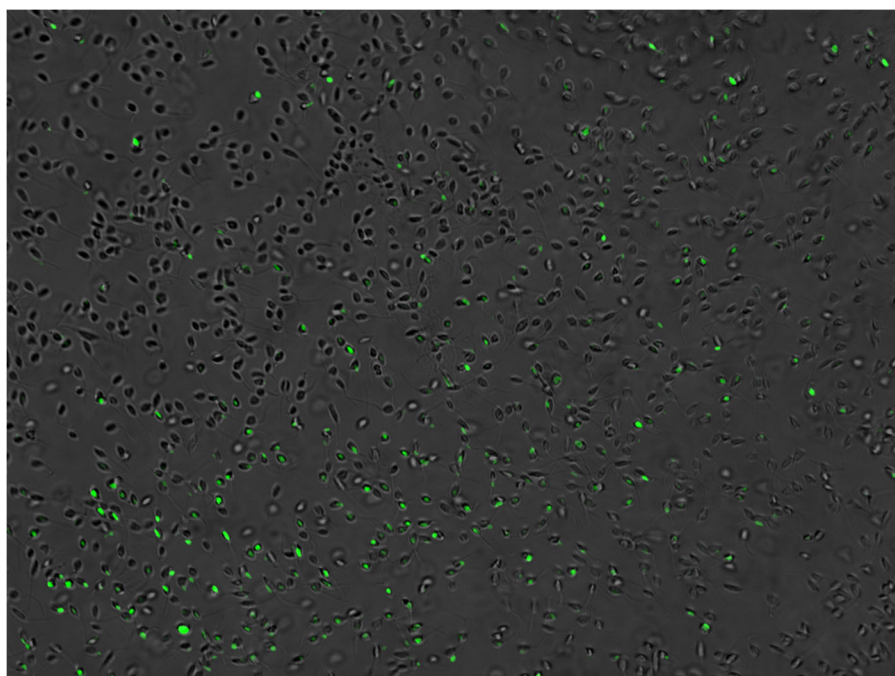


Figure S16. Overlay image of compound **1b** incubation.

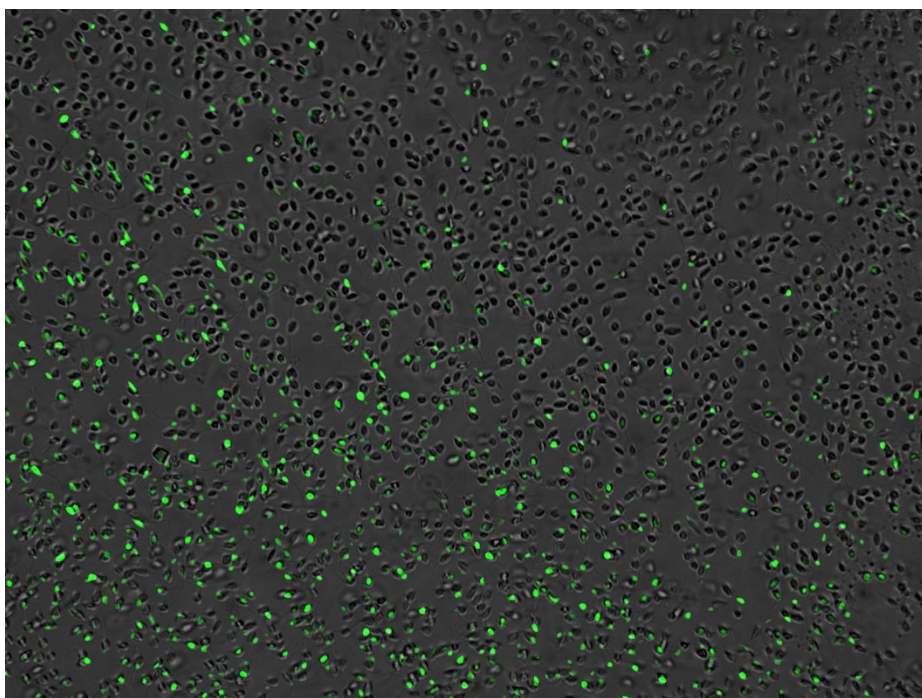


Figure S17. Overlay image of compound 1c incubation.

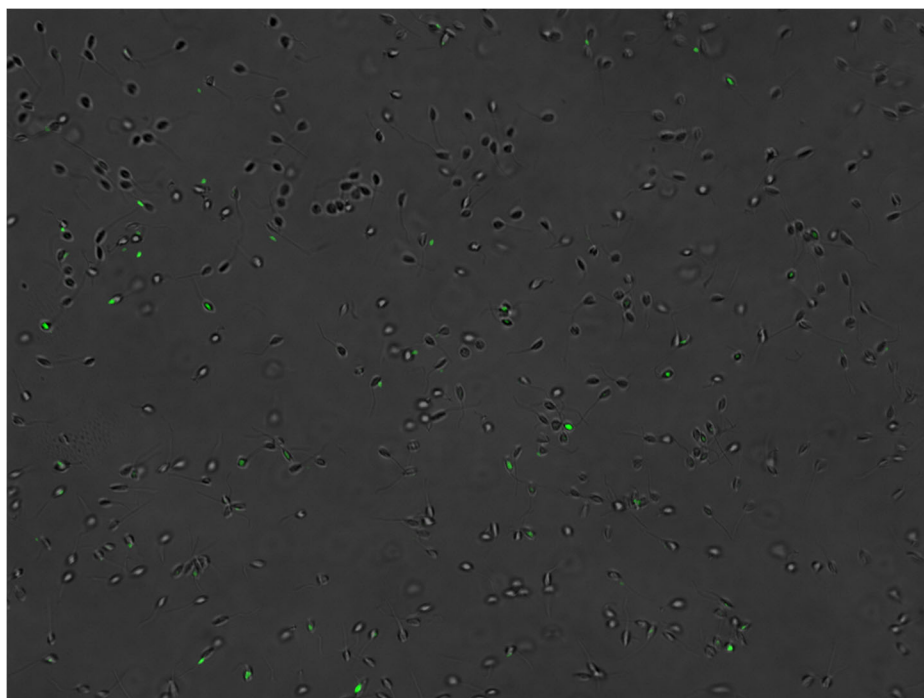


Figure S18. Overlay image of compound **1e** incubation.

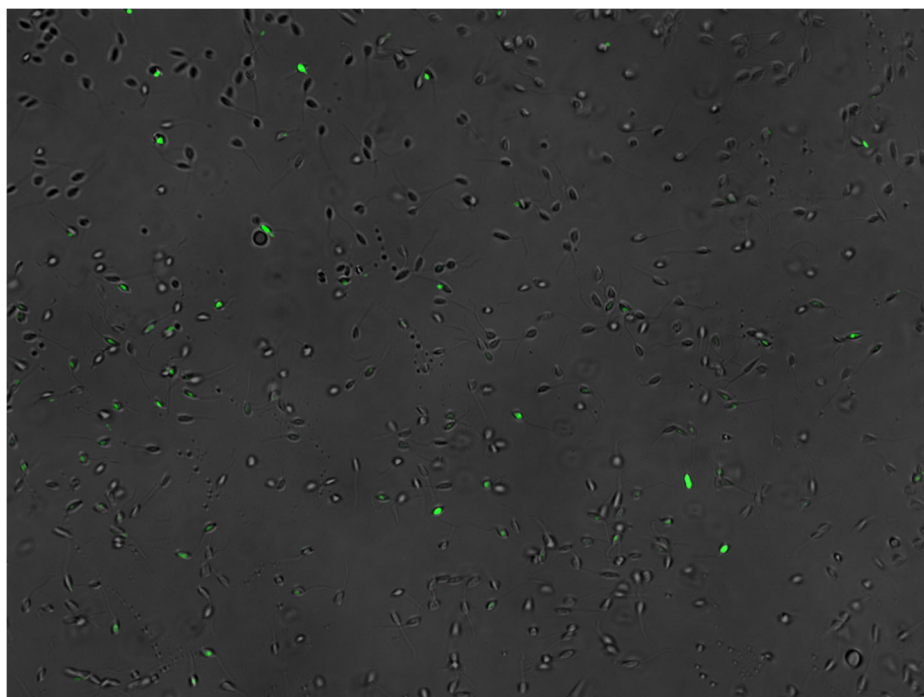


Figure S19. Overlay image of mixed incubation of compounds **1b** + **1e**.

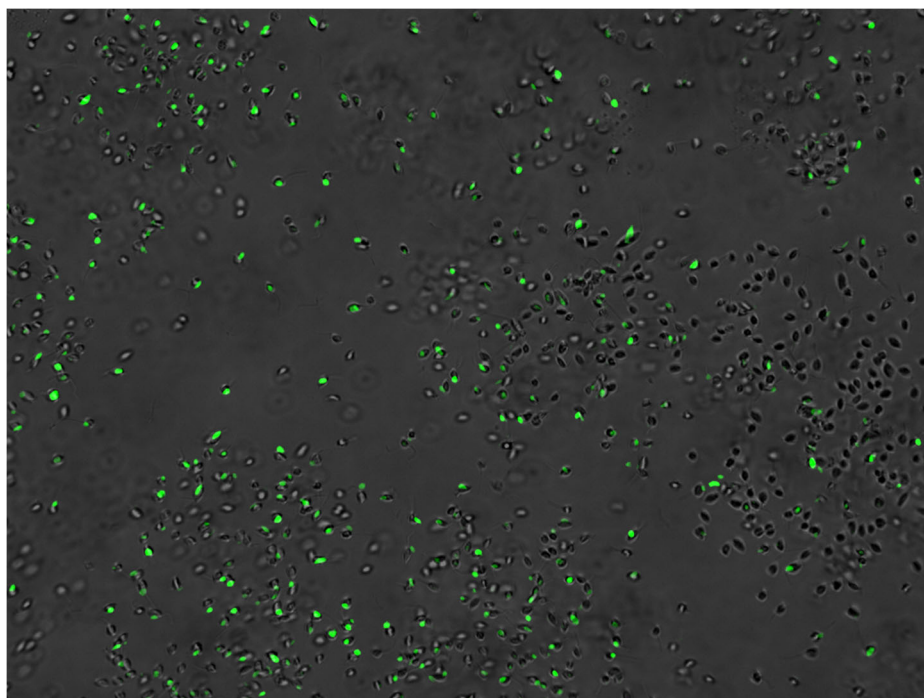


Figure S20. Overlay of mixed incubation of compounds **1c** + **1e**.