

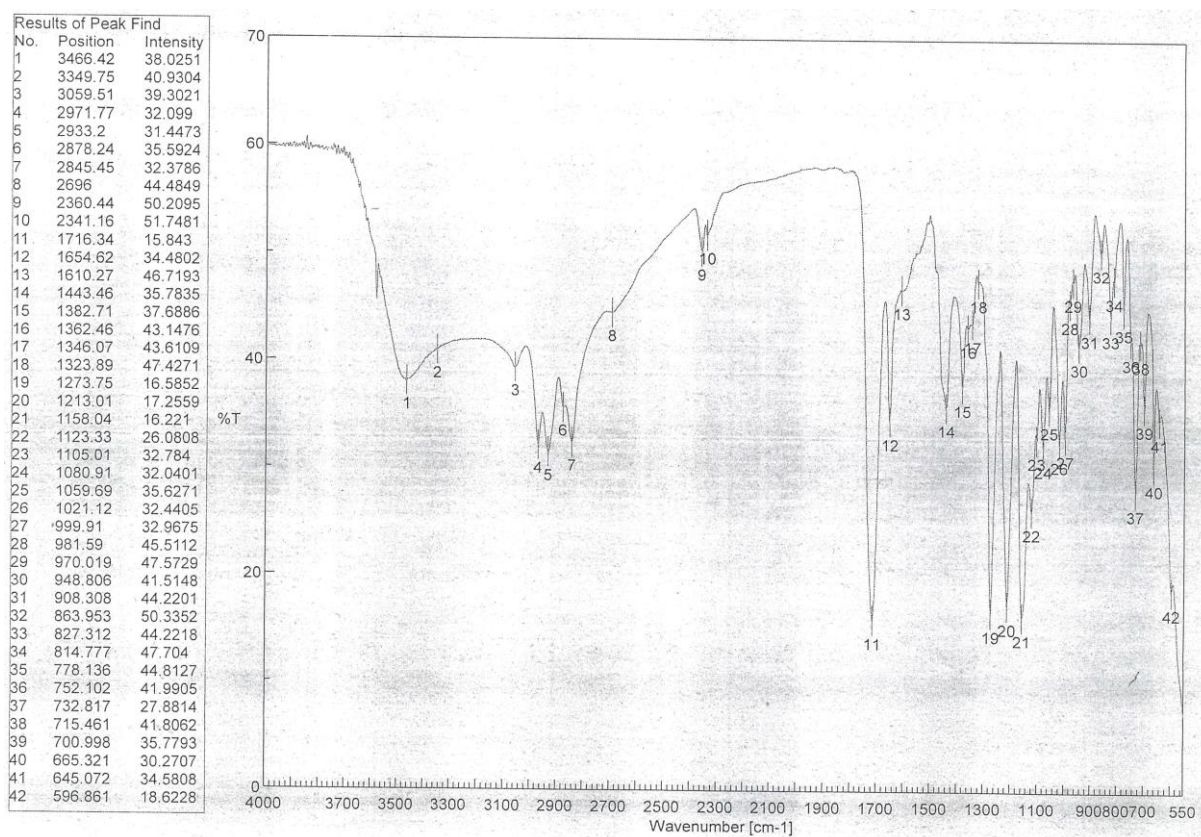
Supplementary Material

Pyrrolizidine-derived Alkaloids: Highly Toxic Components in the Seeds of *Crotalaria cleomifolia* Used in Popular Beverages in Madagascar

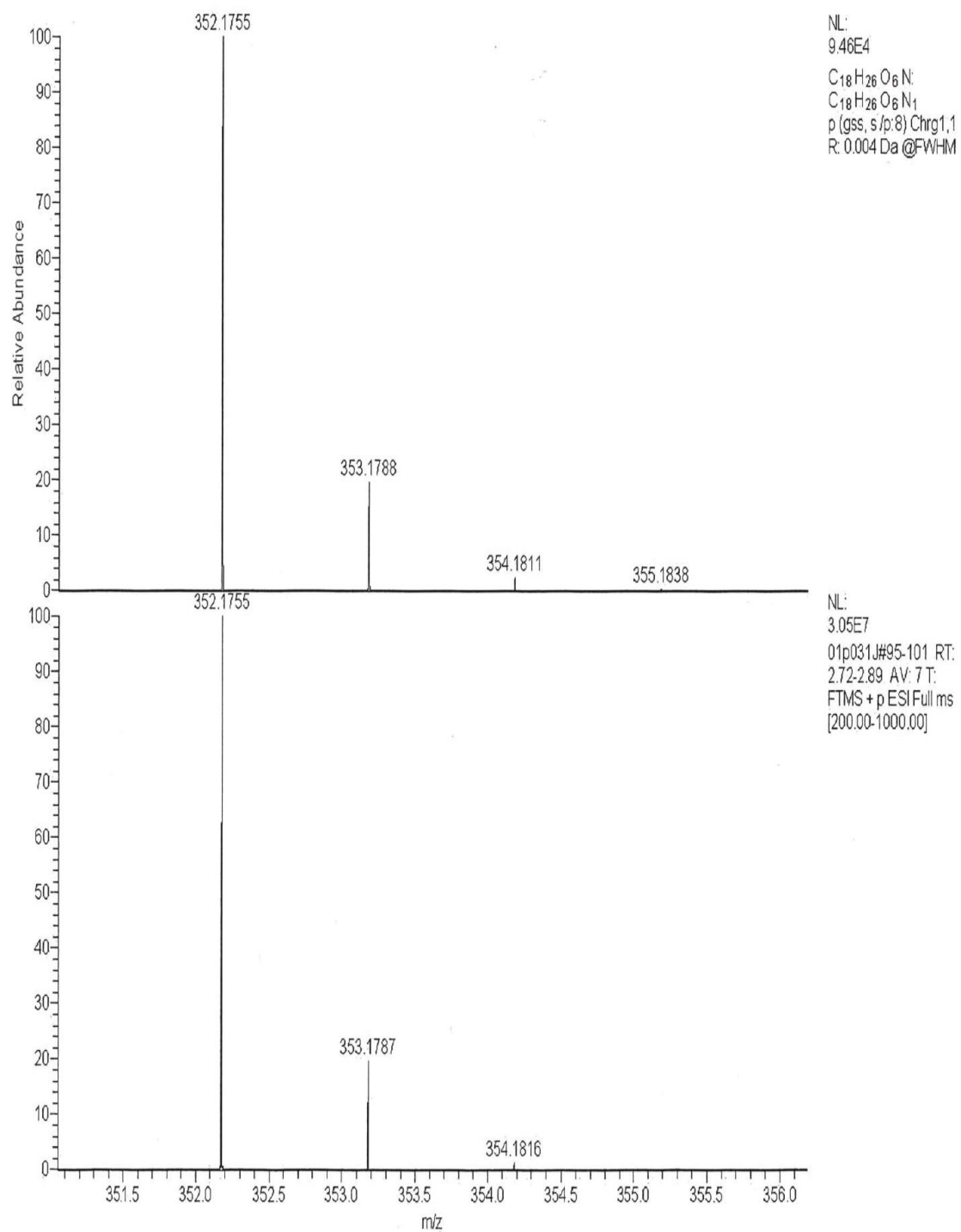
IR, MS and NMR data (^1H NMR, ^{13}C NMR, COSY, HMBC and HMQC) of compound **1**.

MS and ^1H NMR of compound **2**.

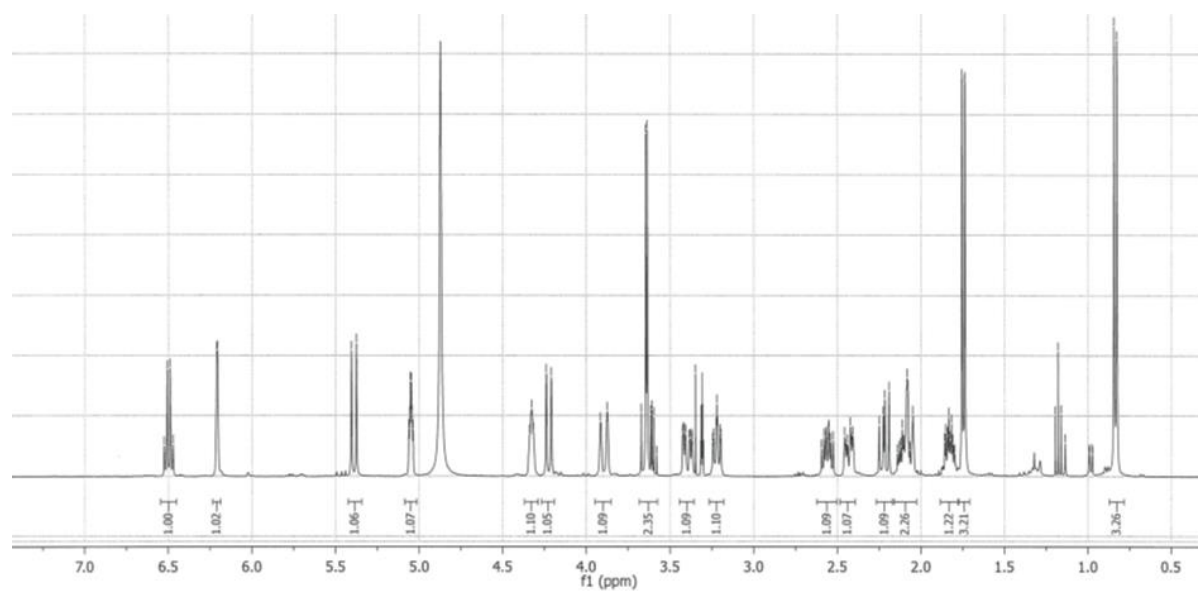
IR of compound **1**.



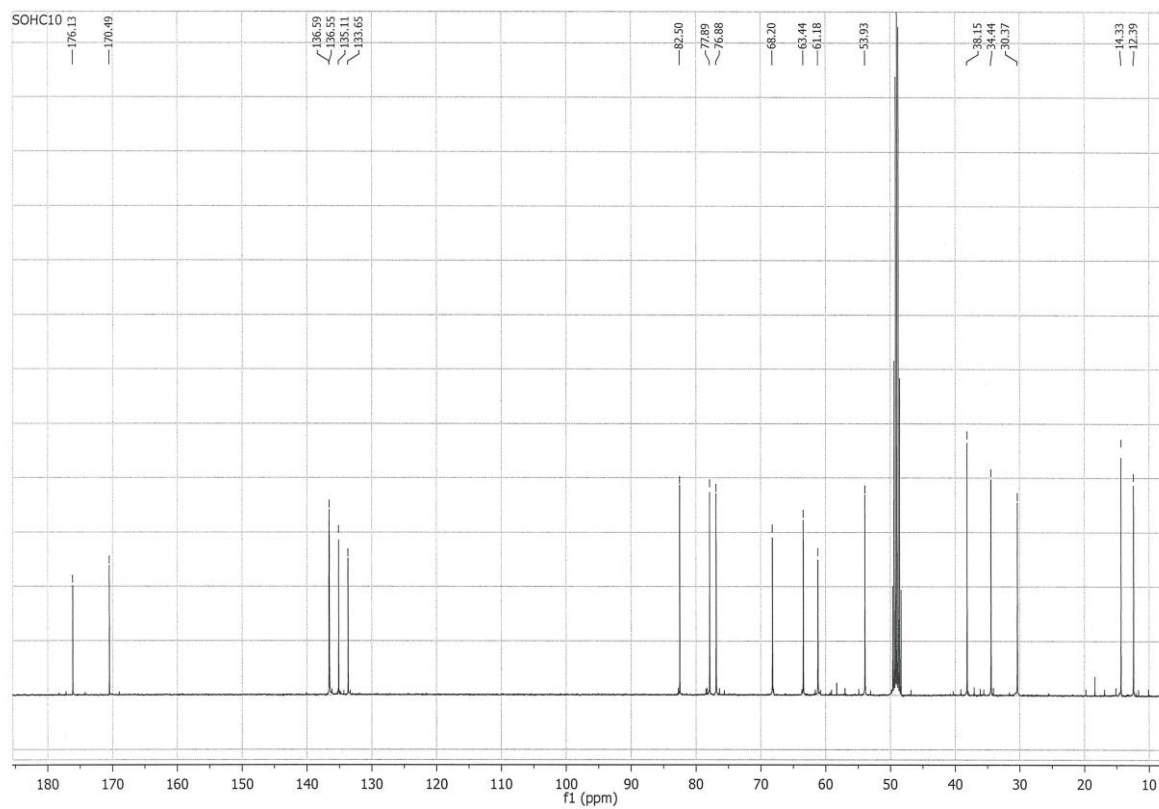
MS of compound 1.



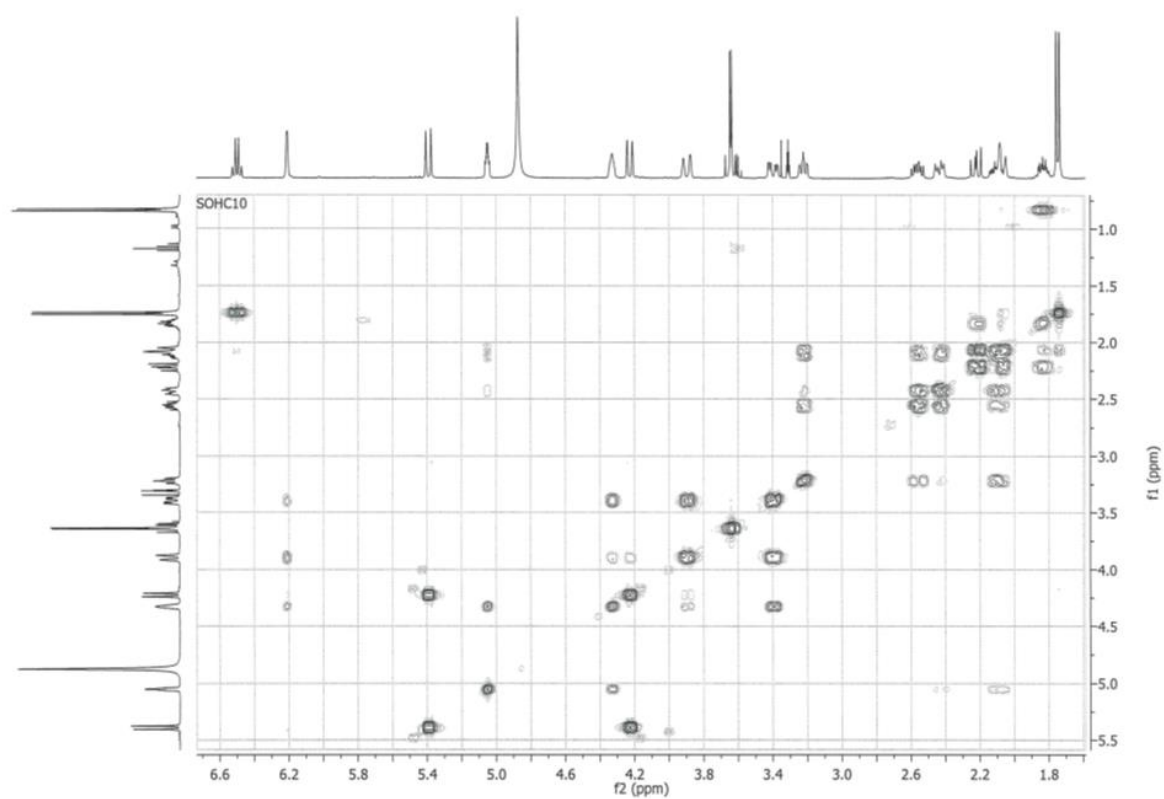
^1H NMR of compound **1**.



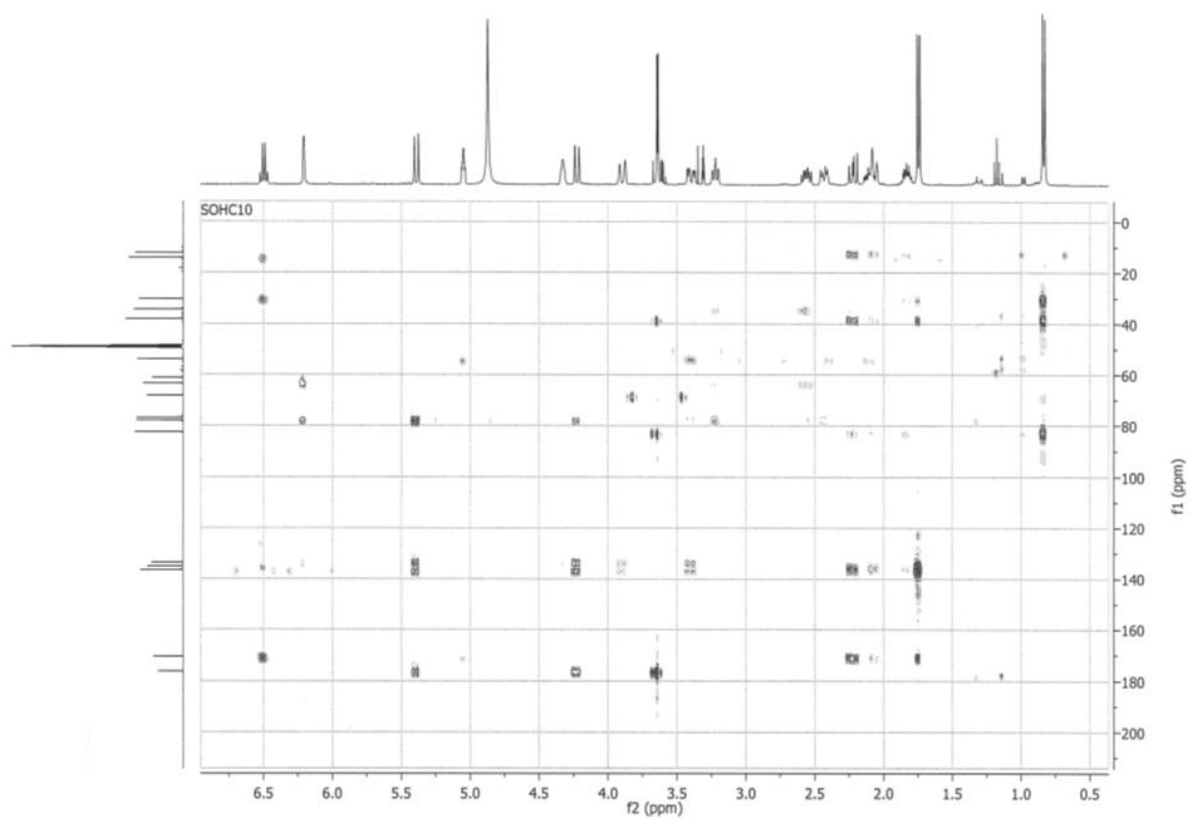
^{13}C NMR of compound **1**.



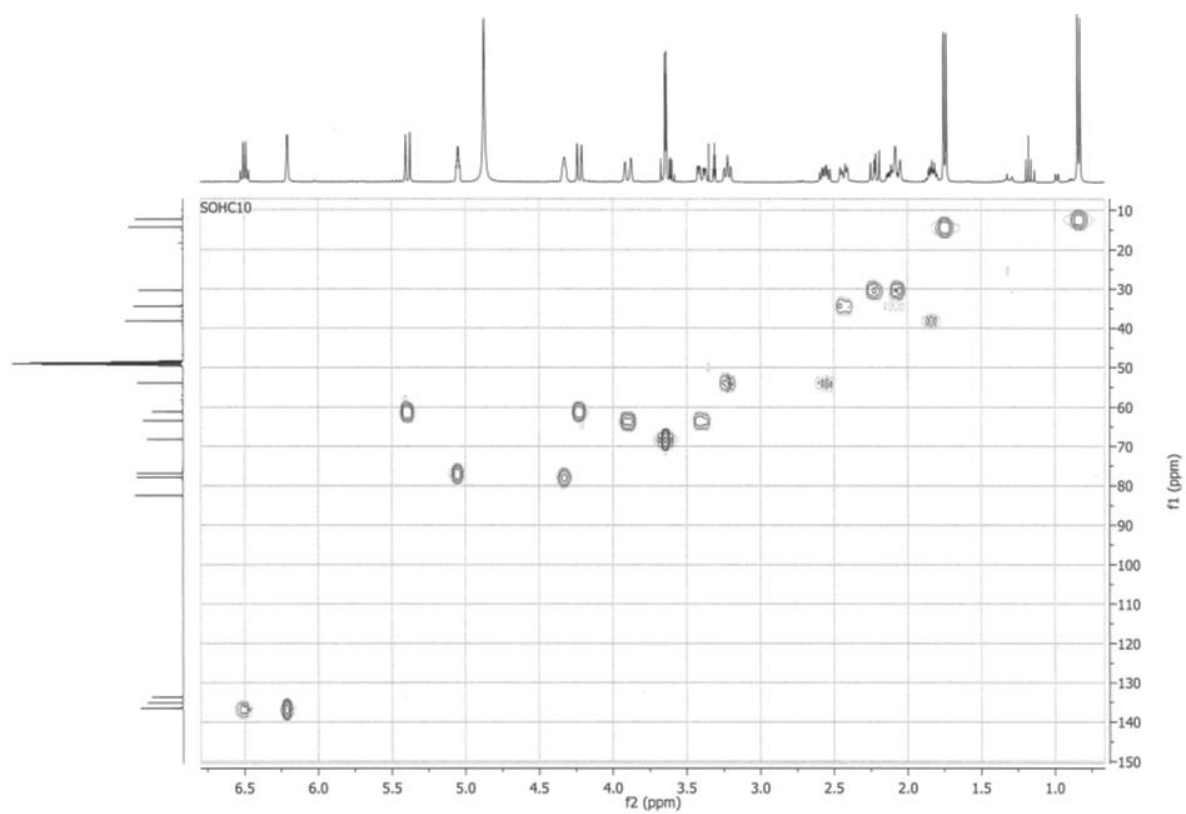
COSY of compound **1**.



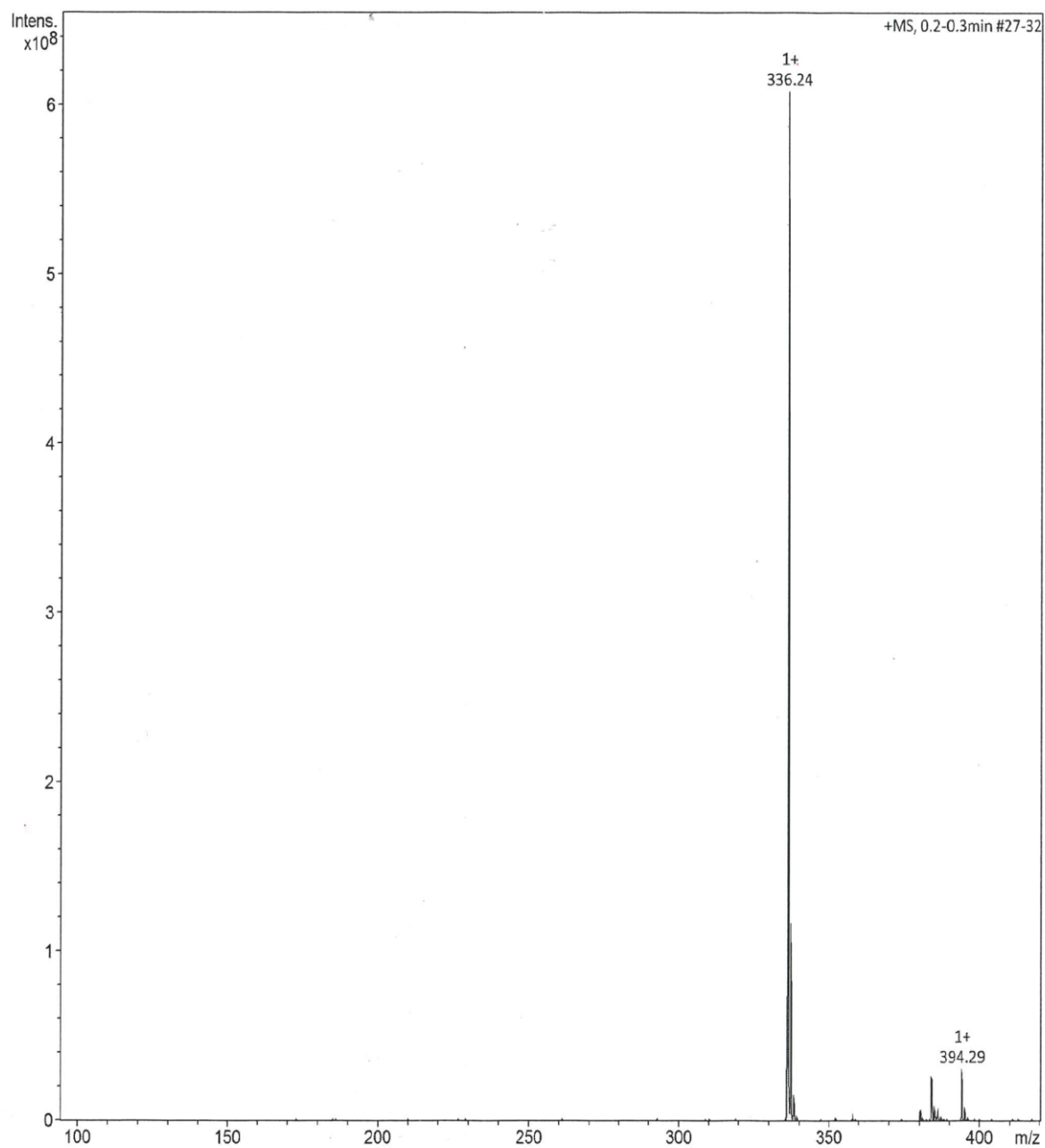
HMBC of compound **1**.



HMQC of compound **1**.



MS of compound **2**.



^1H NMR of compound **2**.

