

SUPPLEMENTARY MATERIAL

Syntheses and study of a pyrroline nitroxide condensed phospholene oxide and a pyrroline nitroxide attached diphenylphosphine

Mostafa Isbera ¹, Balázs Bognár¹, Ferenc Gallyas,^{2,3,6} Attila Bényei⁴, József Jekő⁵, and Tamás Kálai ^{1,6*}

¹Institute of Organic and Medicinal Chemistry, Faculty of Pharmacy; University of Pécs, Szigeti st. 12, H-7624 Pécs, Hungary; mostafaisbera@gmail.com balazs.bognar@aok.pte.hu, tamas.kalai@aok.pte.hu

²Department of Biochemistry and Medical Chemistry, University of Pécs Medical School, 7624 Pécs, Hungary; ferenc.gallyas@aok.pte.hu

³HAS-UP Nuclear-Mitochondrial Interactions Research Group, 1245 Budapest, Hungary

⁴Department of Pharmaceutical Chemistry, University of Debrecen, Egyetem tér 1, H-4032 Debrecen, Hungary; benyei.attila@science.unideb.hu

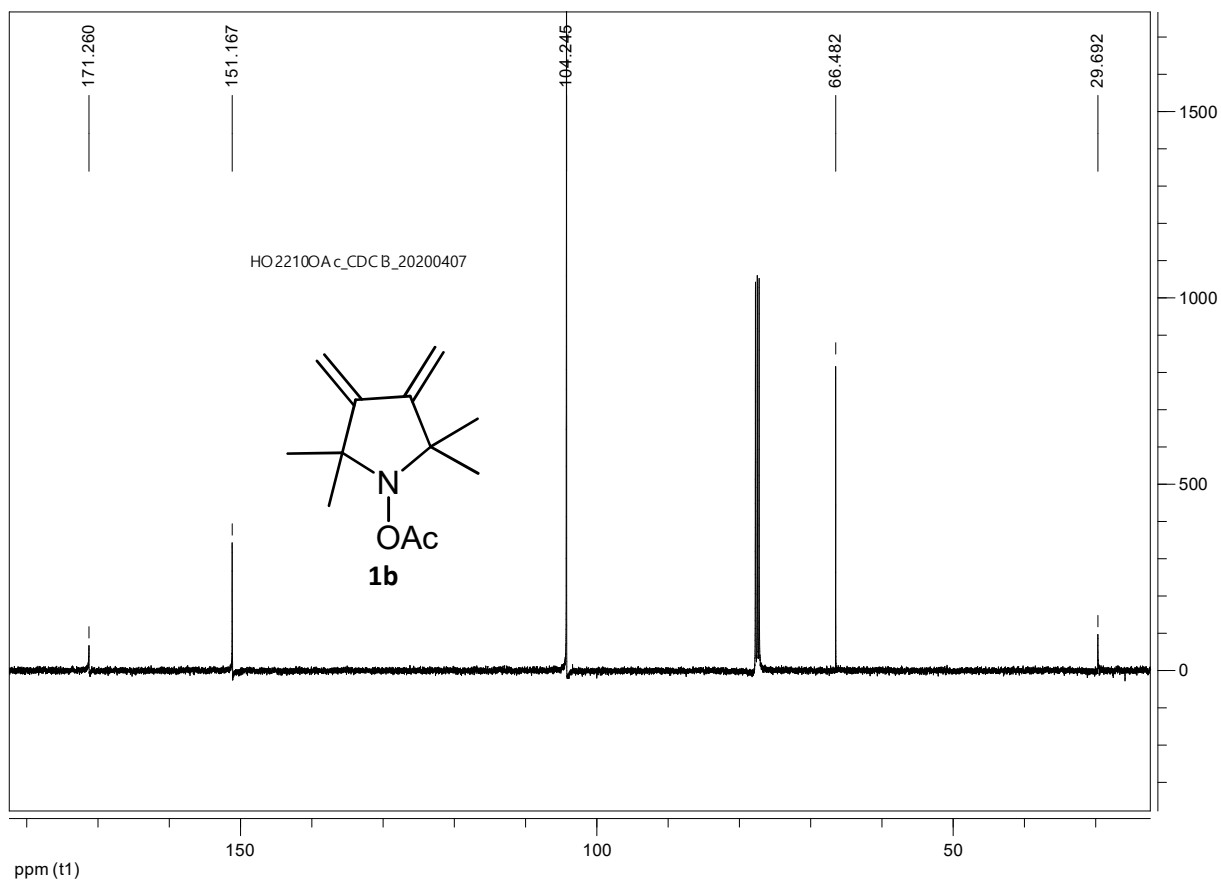
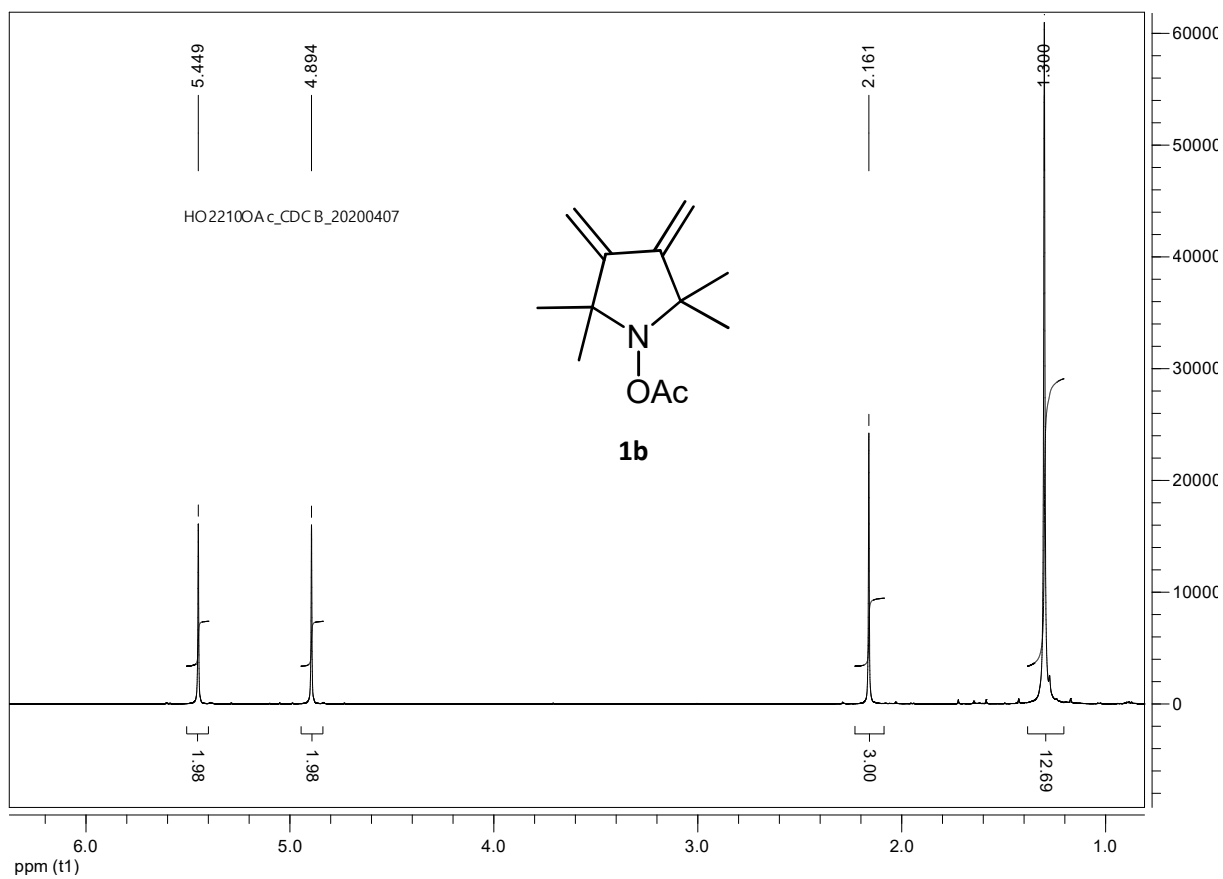
⁵Department of Chemistry, University of Nyíregyháza, Sóstói st. 31/B, 4440 Nyíregyháza, Hungary; jjozsi@gmail.com

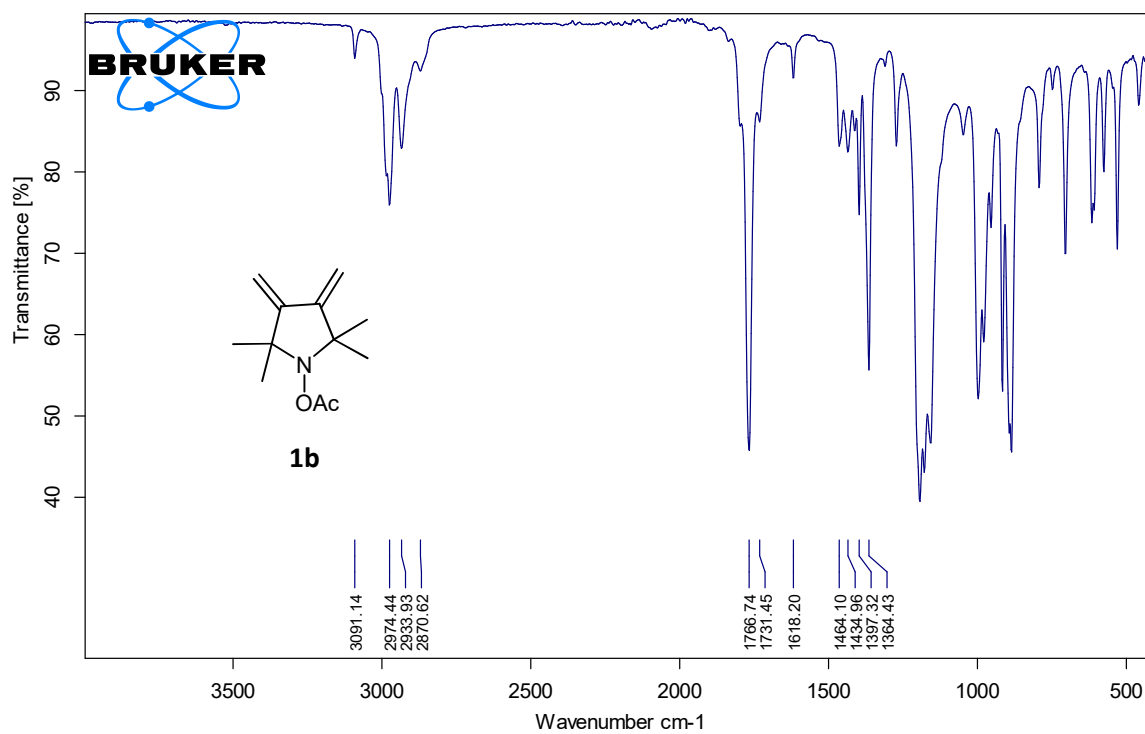
⁶János Szentágothai Research Center, University of Pécs, Ifjúság 20, H-7624 Pécs, Hungary

*Correspondence: tamas.kalai@aok.pte.hu; Tel.: (+3672536221)

Contents

¹ H NMR, ¹³ C NMR, IR of compound 1b	3
¹ H NMR, ³¹ P NMR, ¹³ C NMR, IR of compound 2b	5
¹ H NMR, ³¹ P NMR, ¹³ C NMR, IR of compound 2a	7
¹ H NMR, ¹³ C NMR, IR of compound 4	9
¹ H NMR, ³¹ P NMR, ¹³ C NMR, IR of compound 5	11
¹ H NMR, ³¹ P NMR, ¹³ C NMR, IR of compound 6	13
¹ H NMR, ³¹ P NMR, ¹³ C NMR, IR of compound 7	15
¹ H NMR, ³¹ P NMR, ¹³ C NMR, IR of compound 8	17
IR and EPR of compound 9	19
Mass spectra of compounds 1b-9	20
Elemental analysis of compounds 1b-9	25
Preliminary biological data	26



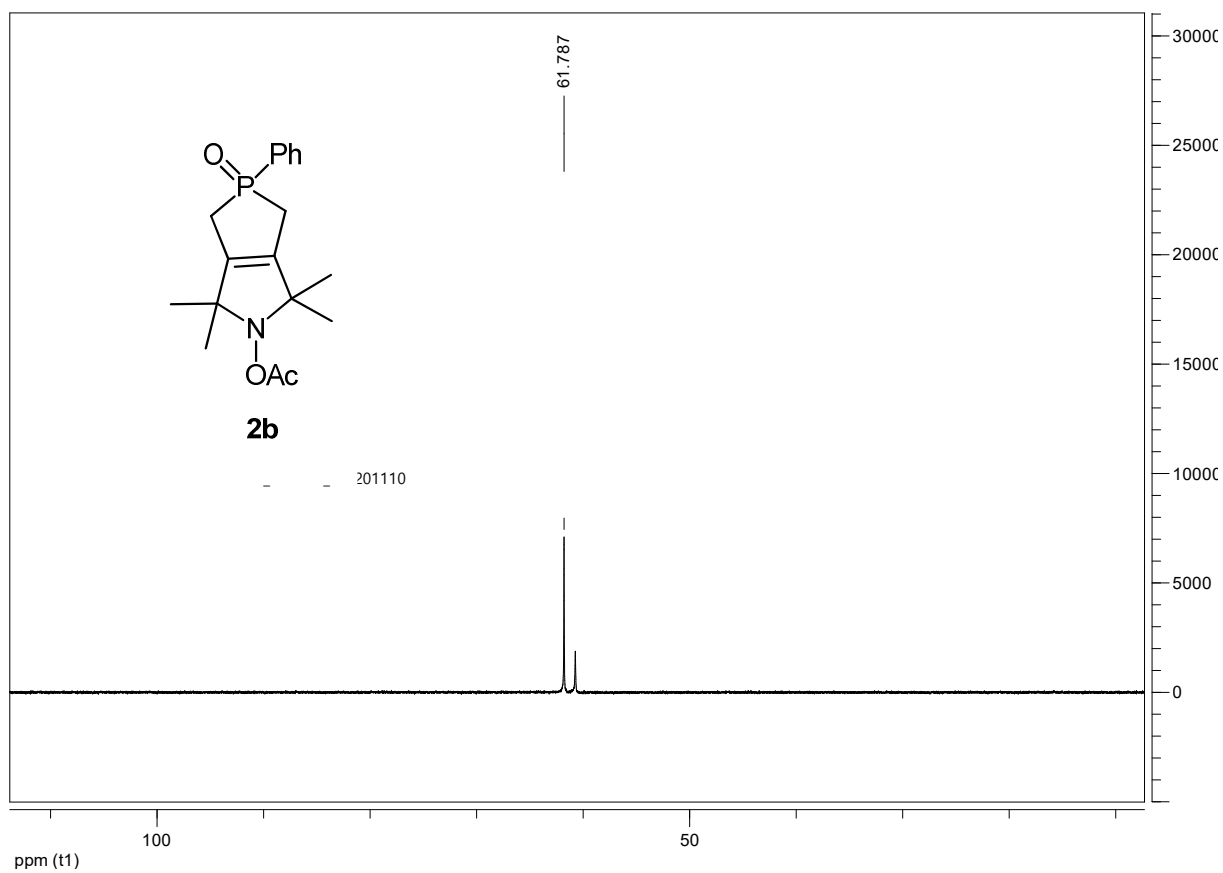
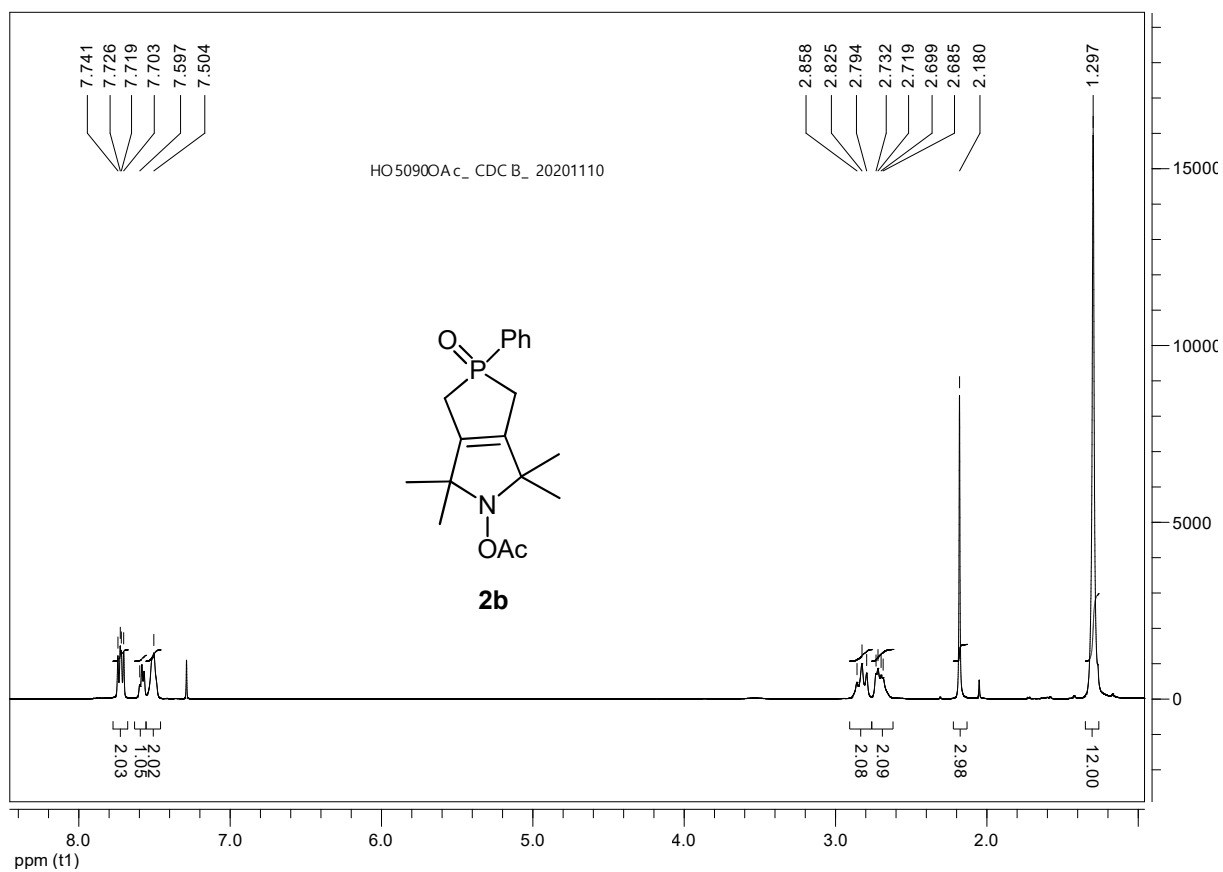


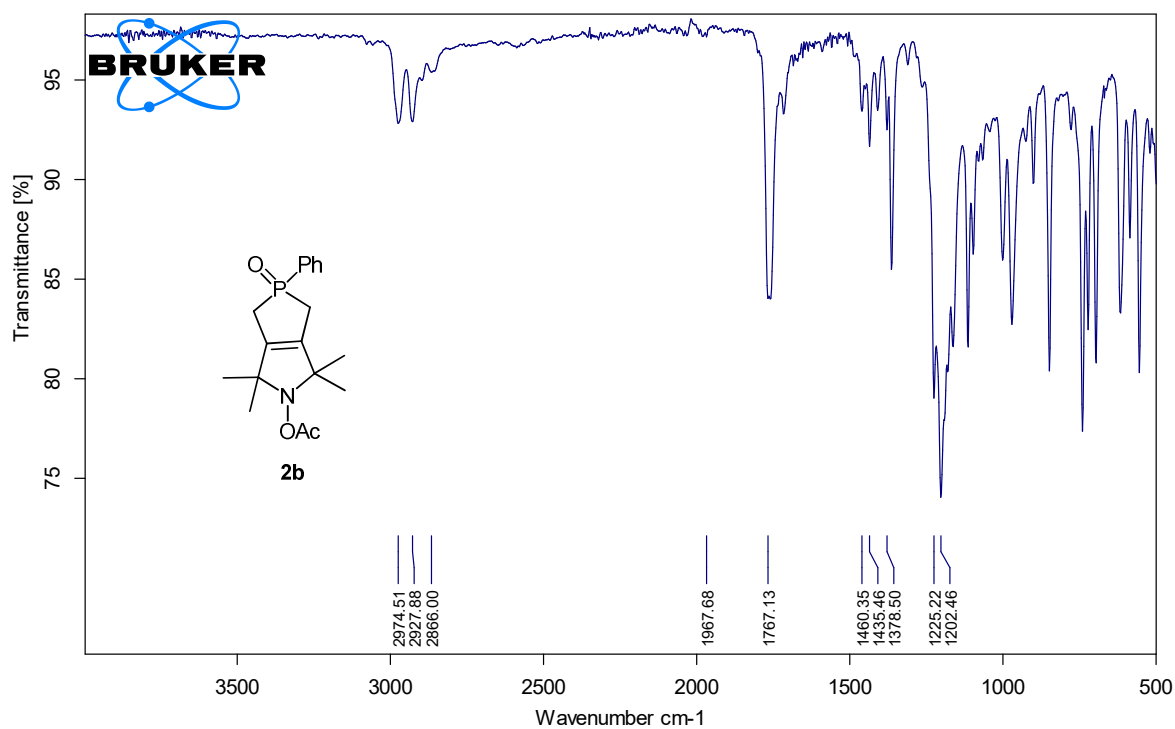
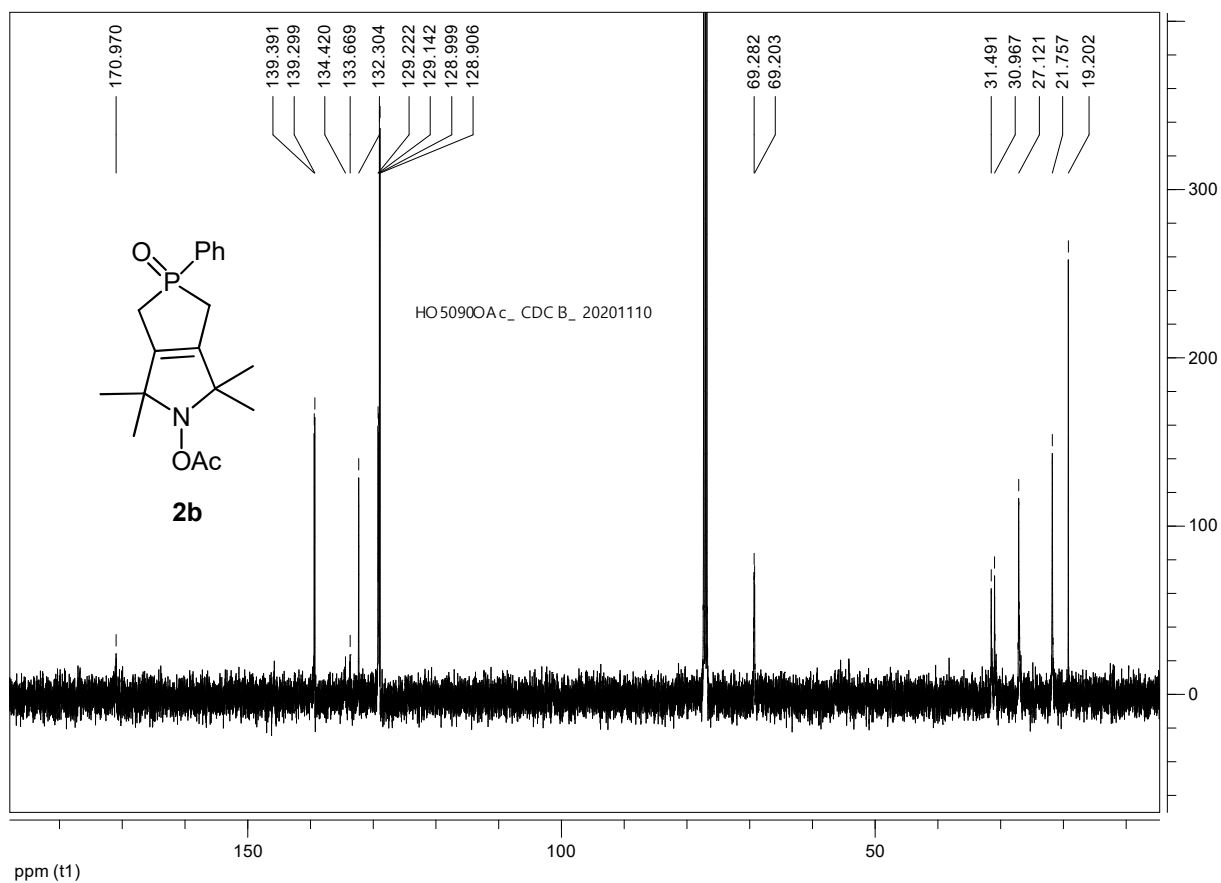
C:\OPUS_7.2.139.1294\Measure\ATR_DI\HO-2210-OAc.0

HO-2210-OAc

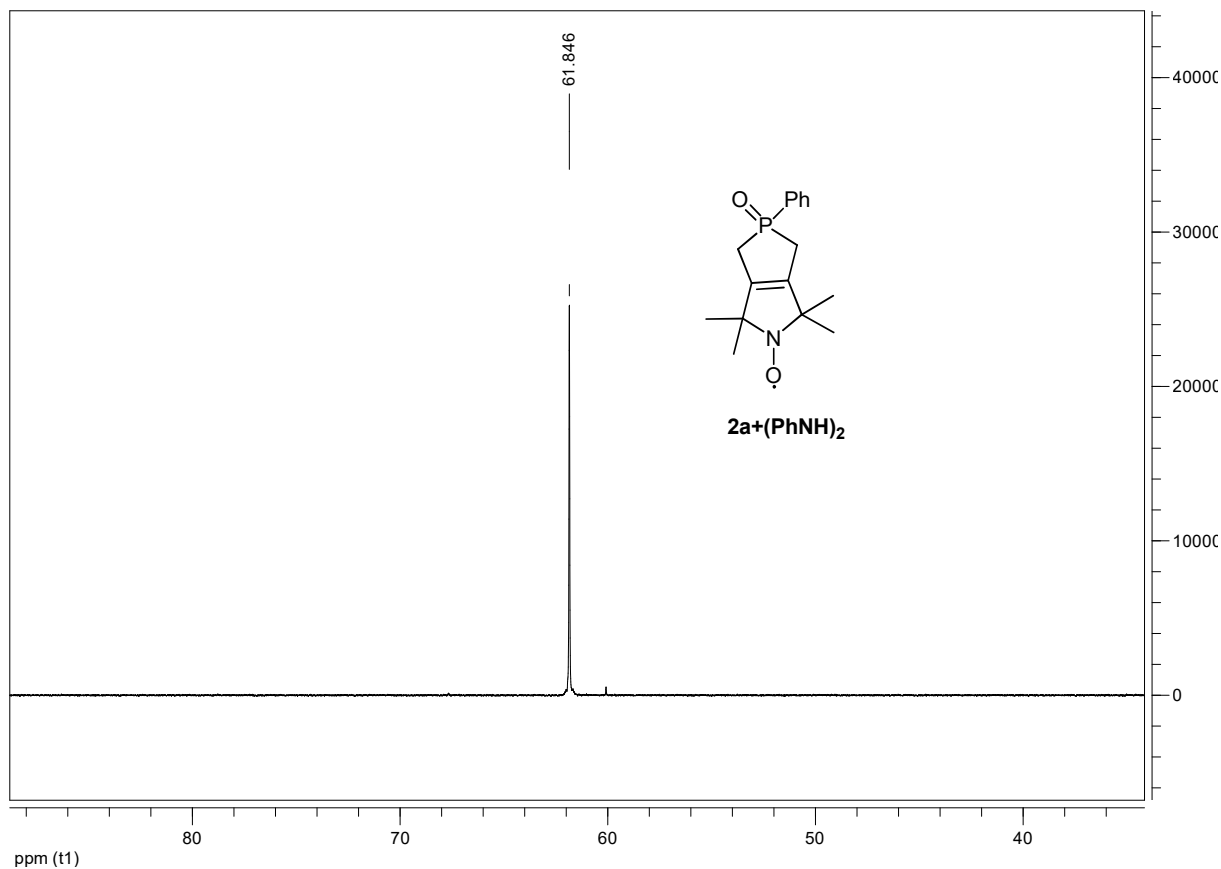
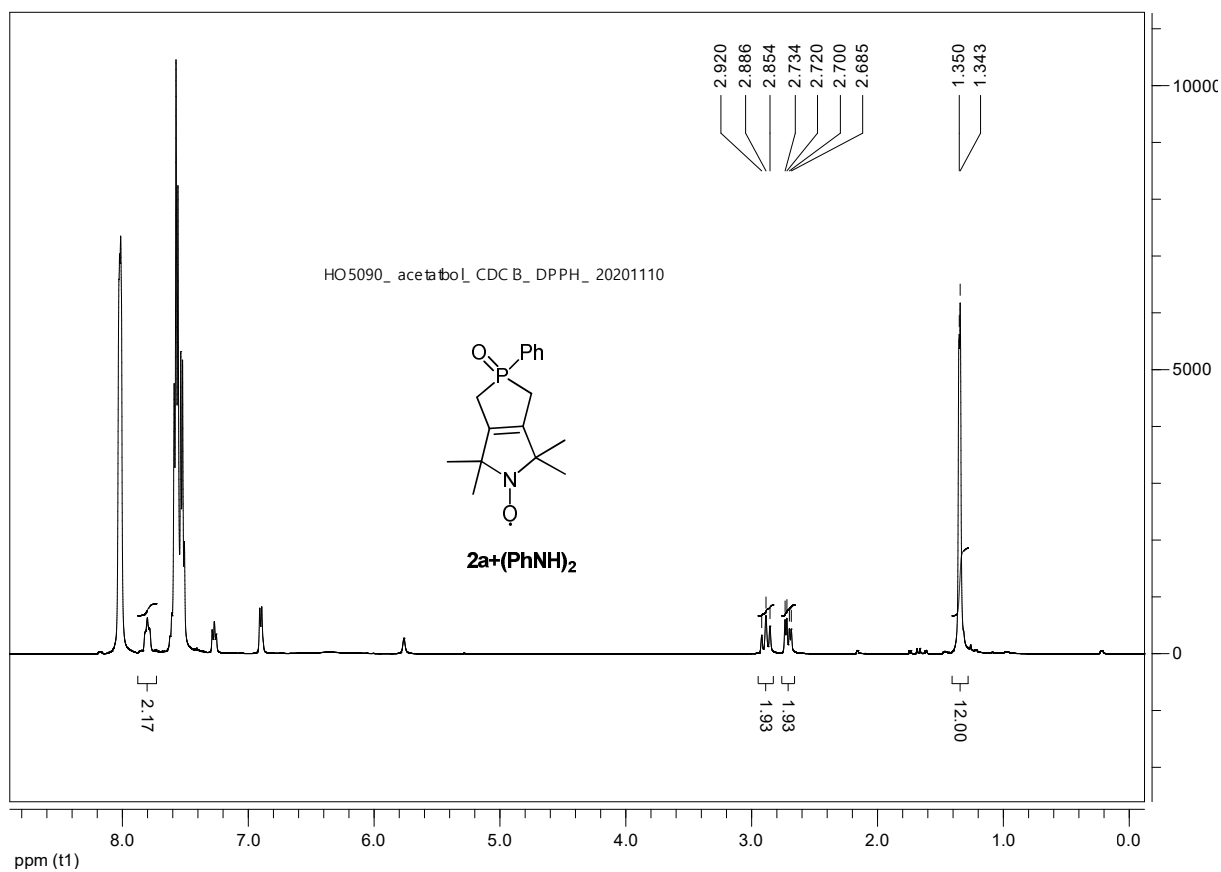
Instrument type and / or accessory

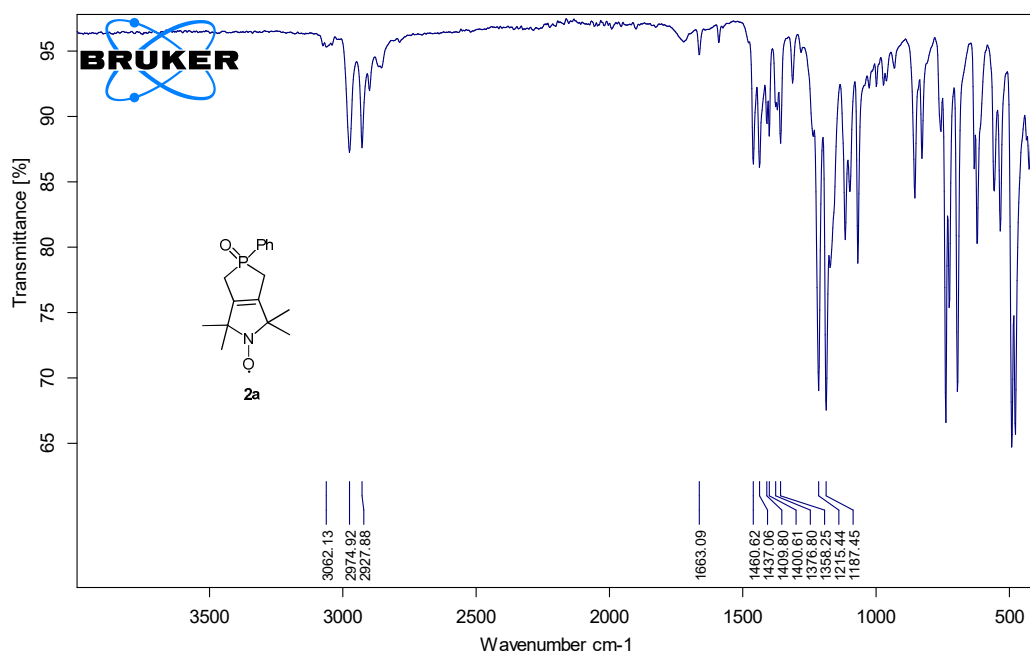
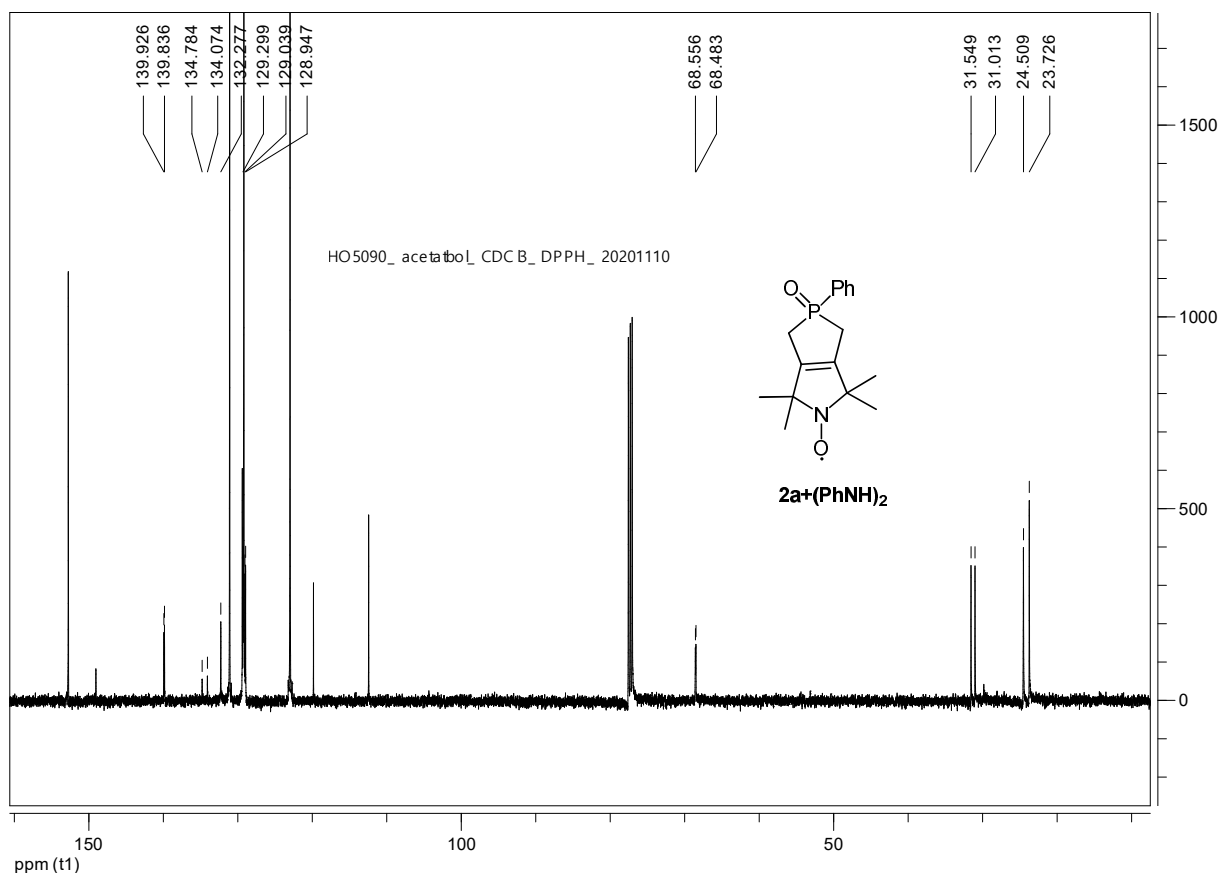
2021.04.01

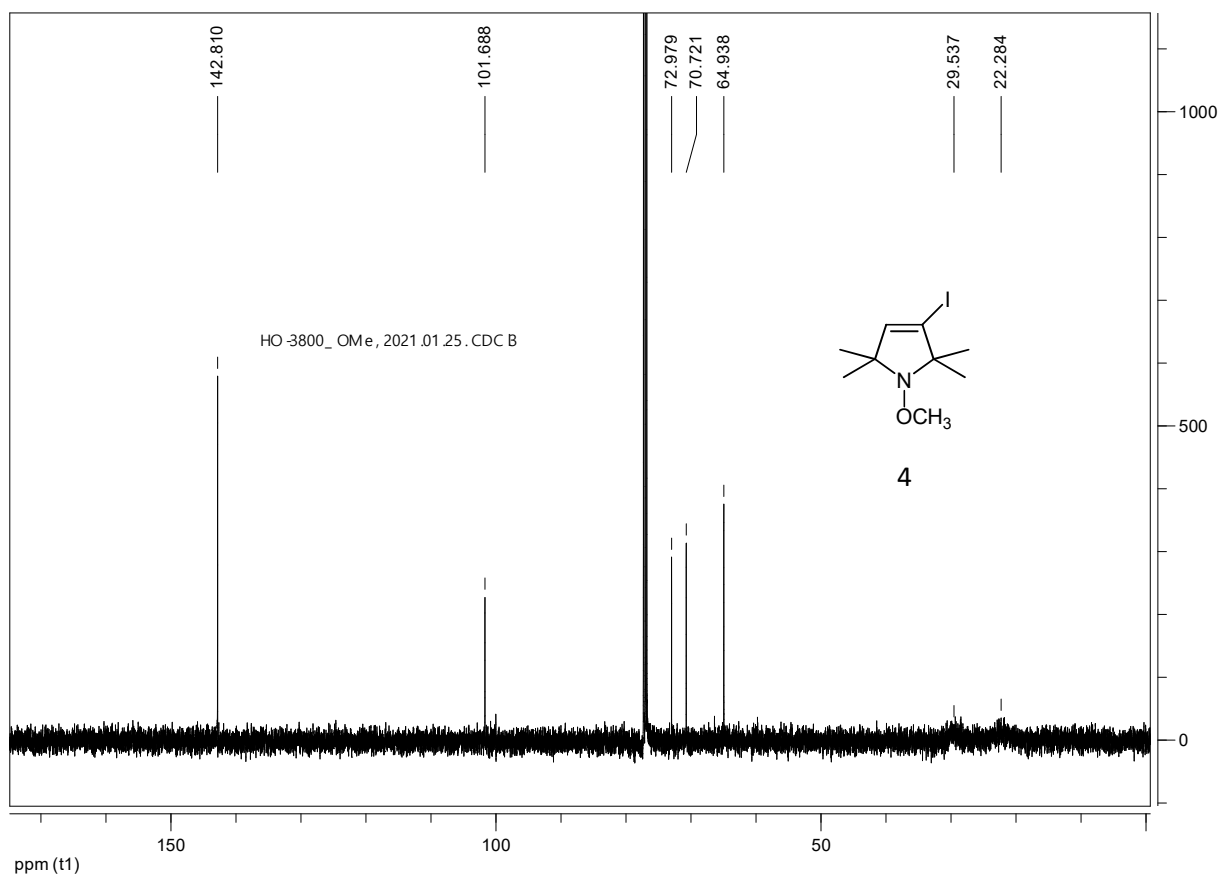
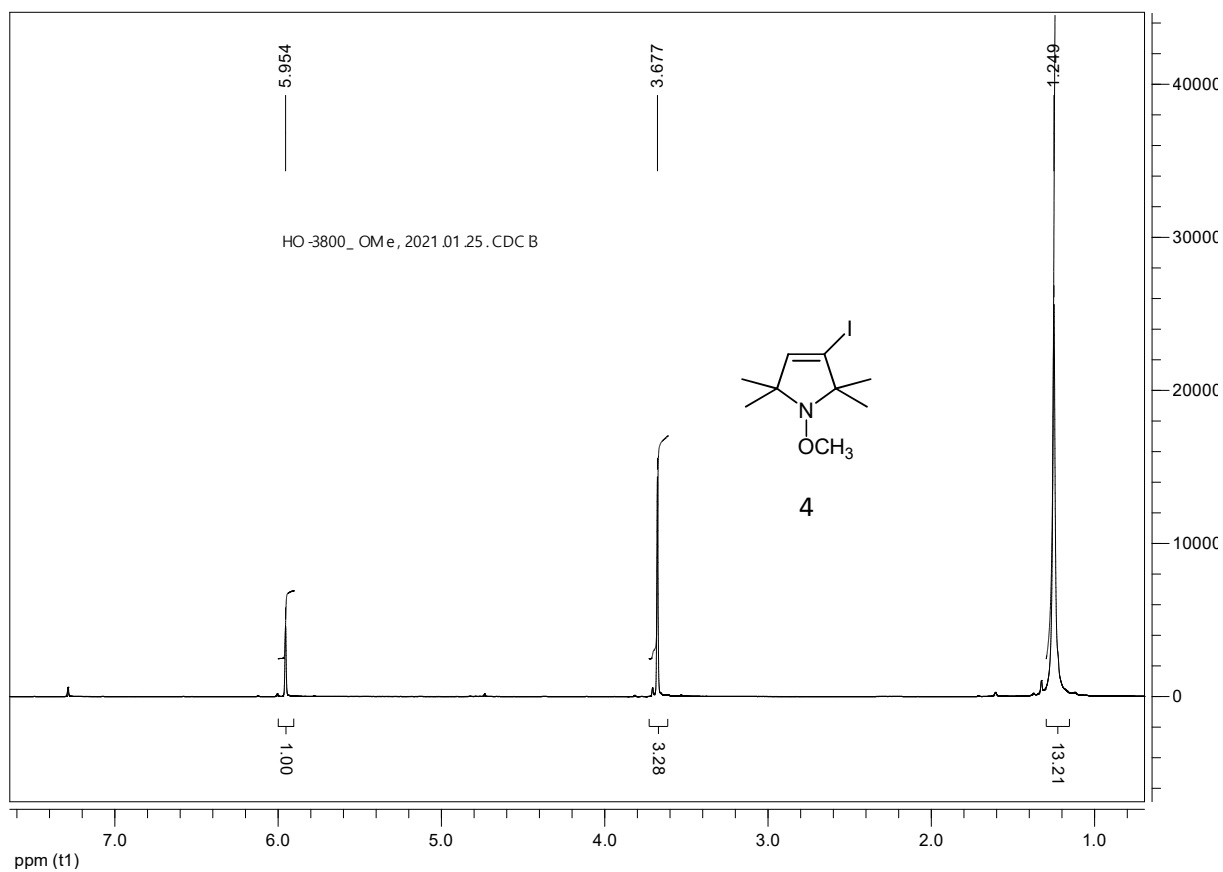


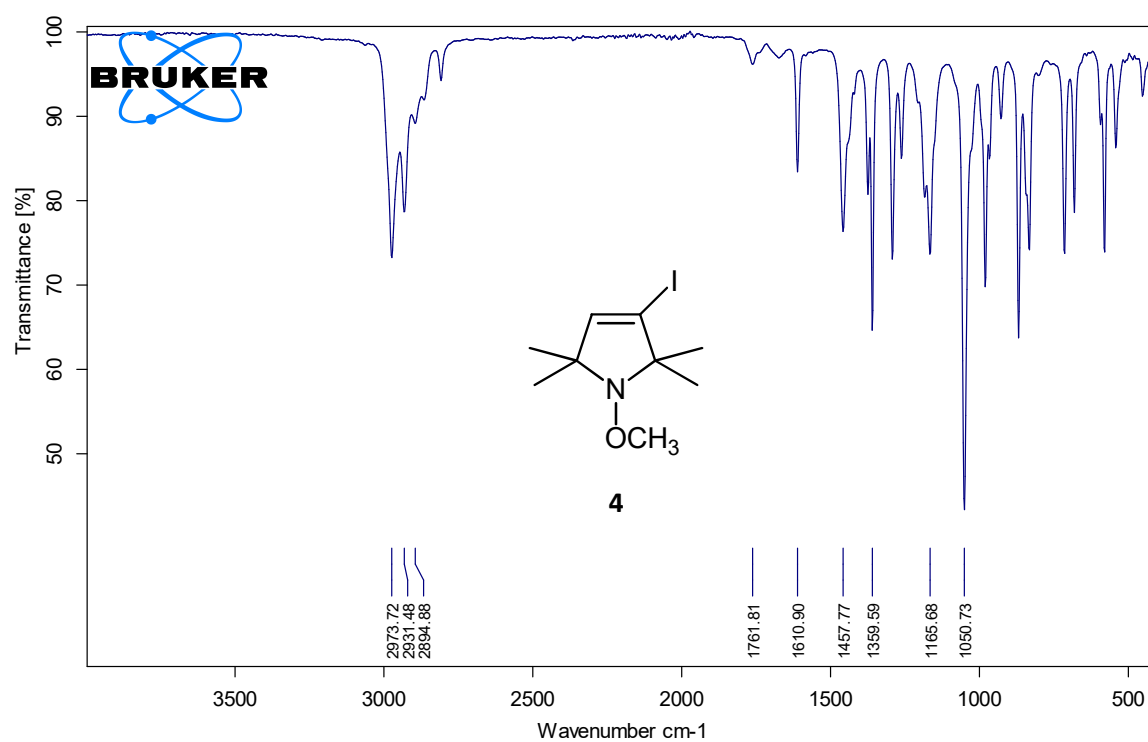


C:\OPUS_7.2.139.1294\Measure\HO-5090 OAc.0	HO-5090 OAc	Instrument type and / or accessory	2020.11.20
--	-------------	------------------------------------	------------







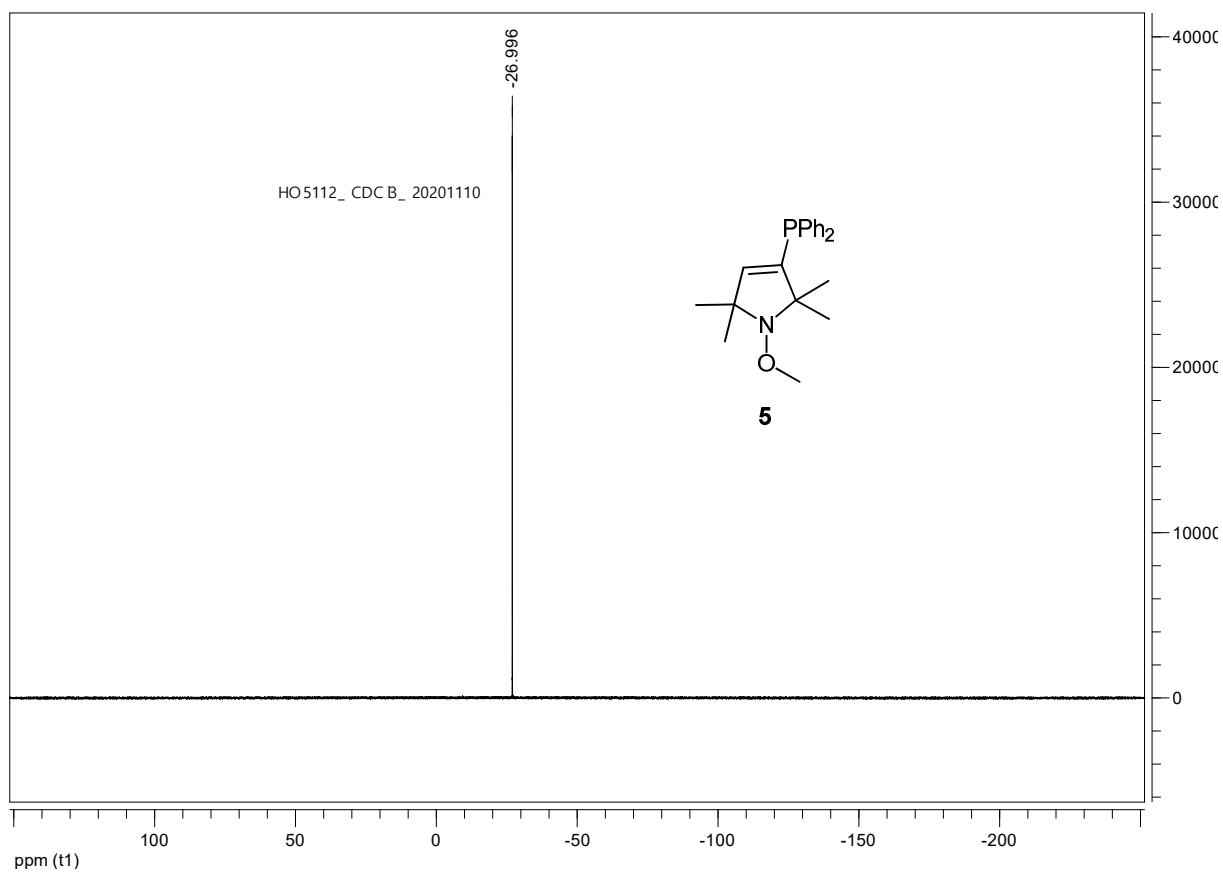
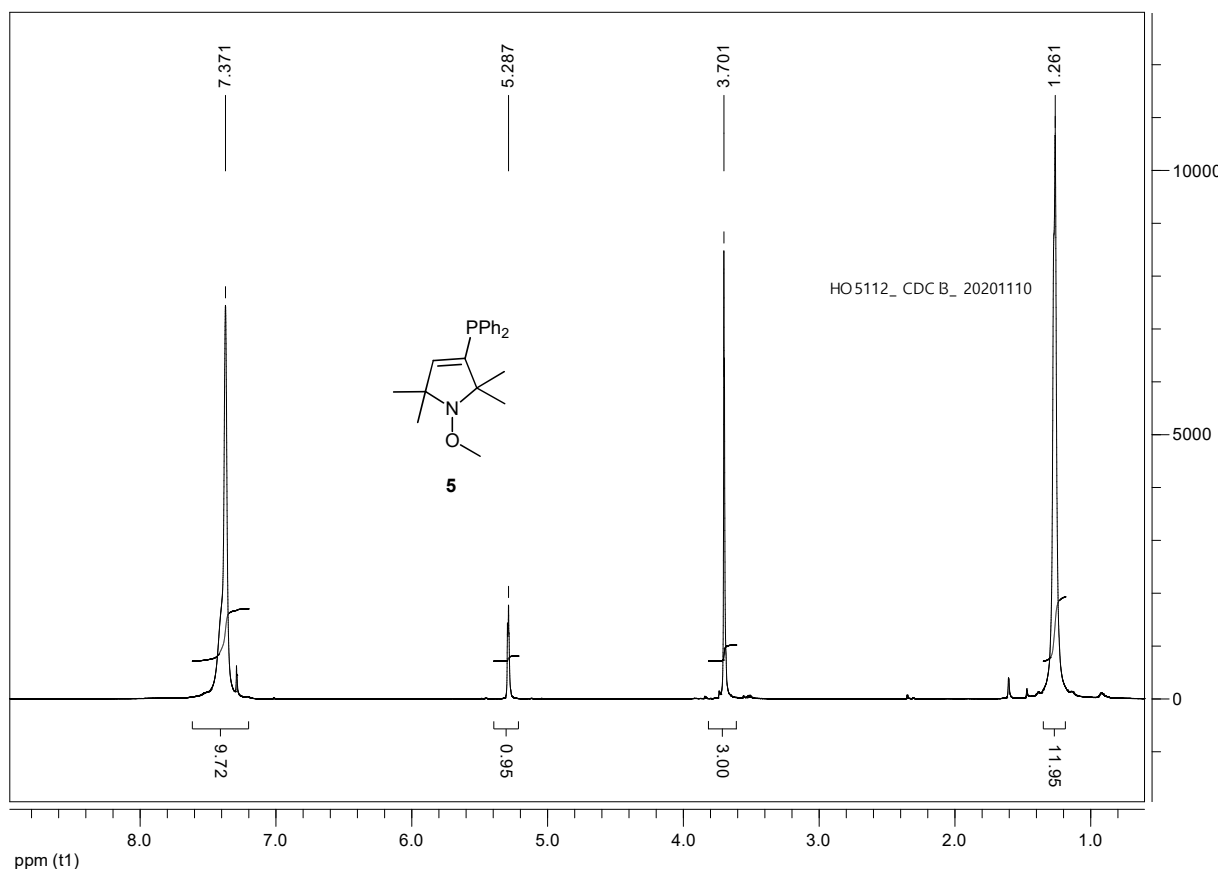


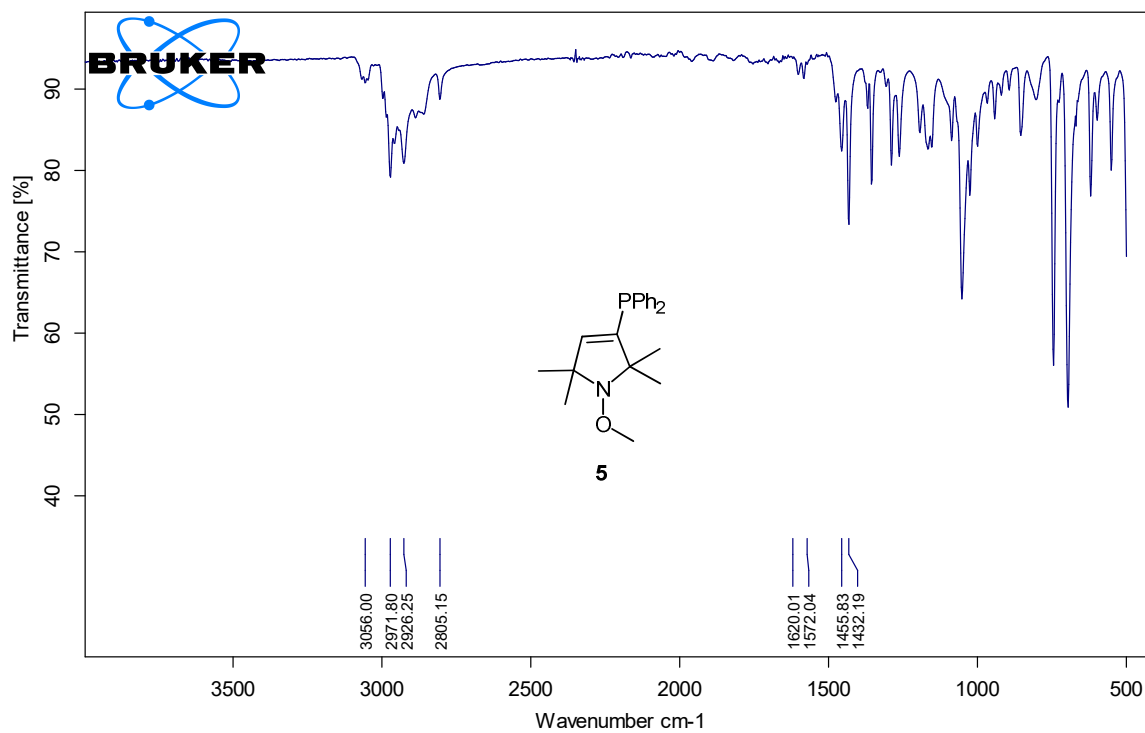
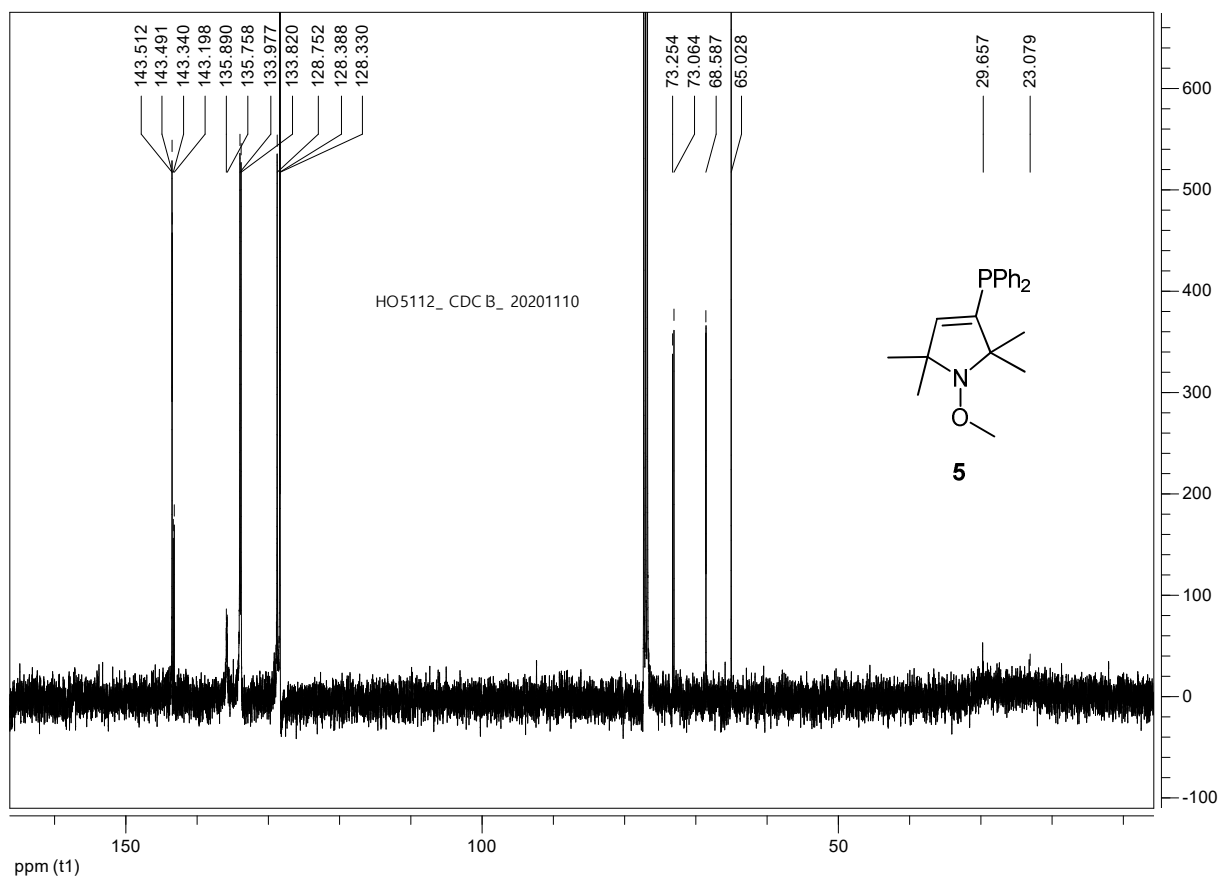
C:\OPUS_7.2.139.1294\Measure\ATR_DI\HO-3800-OMe.0

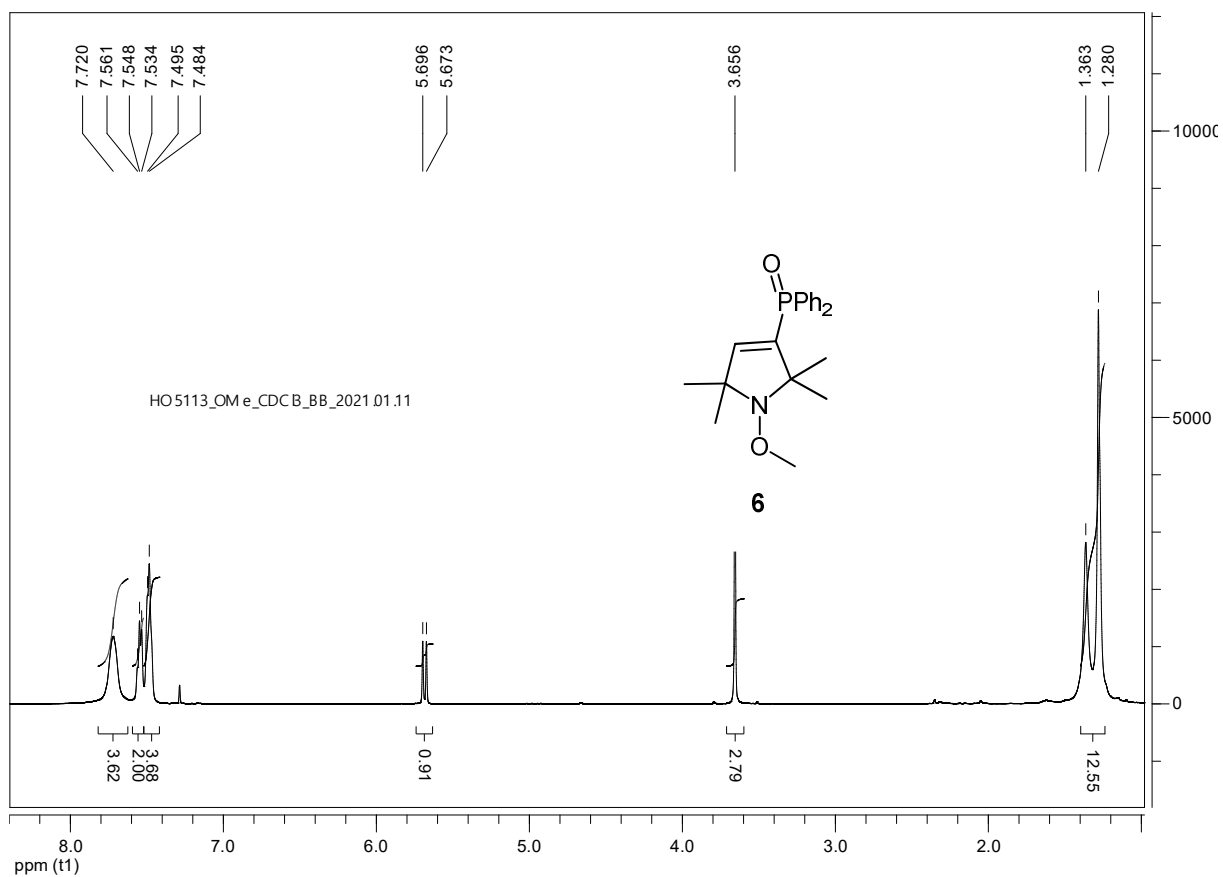
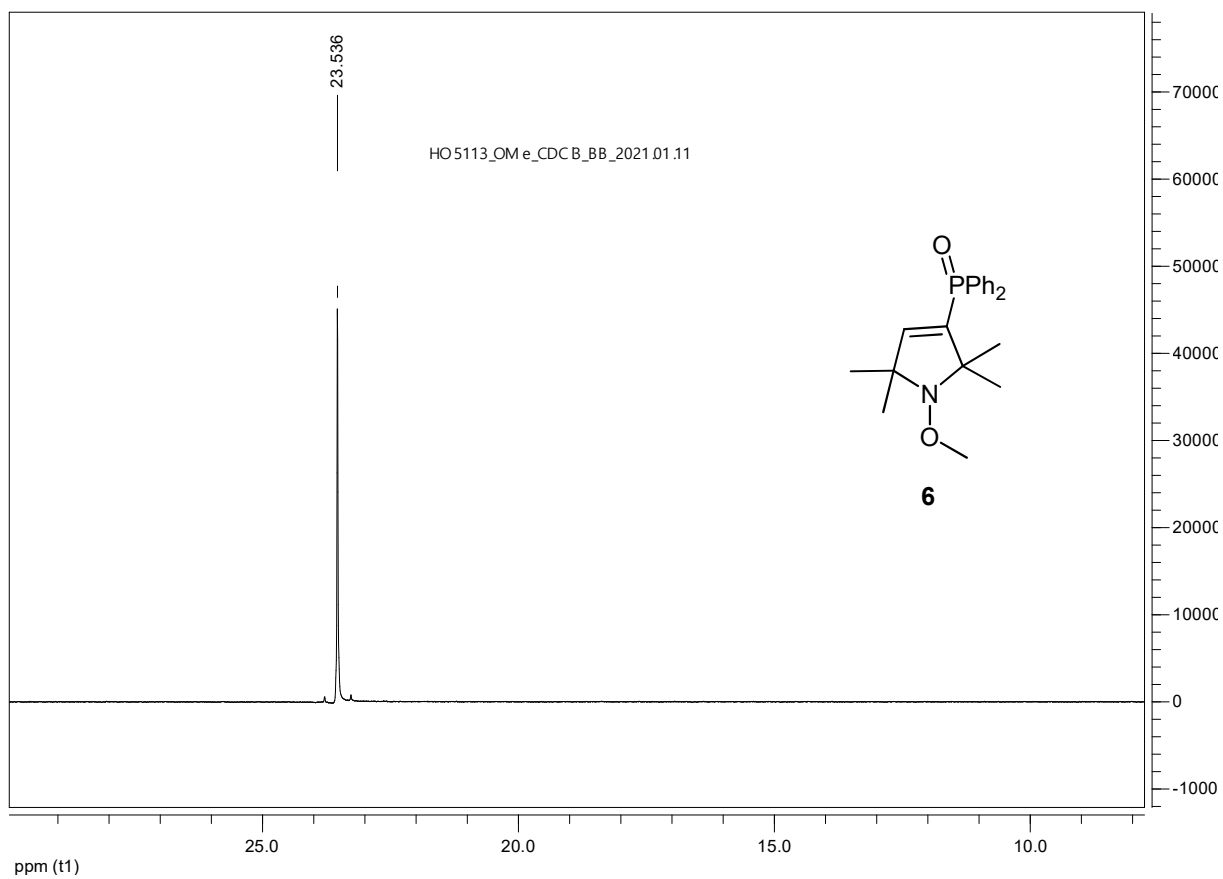
HO-3800-OMe

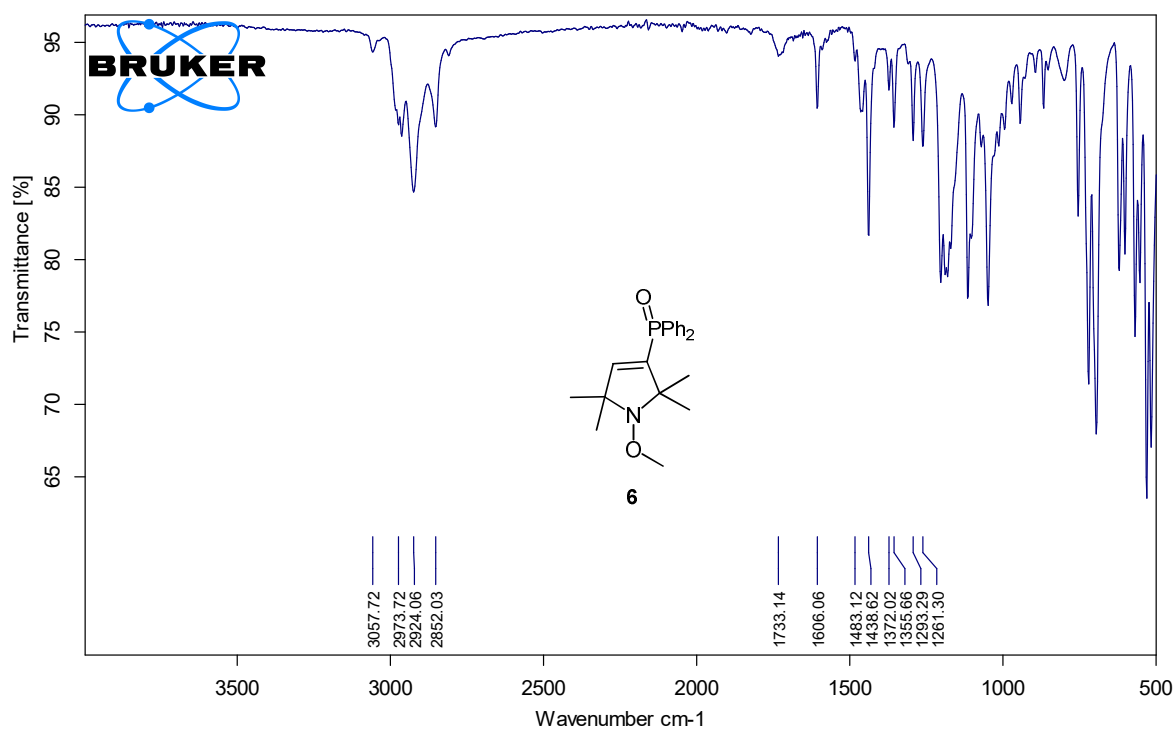
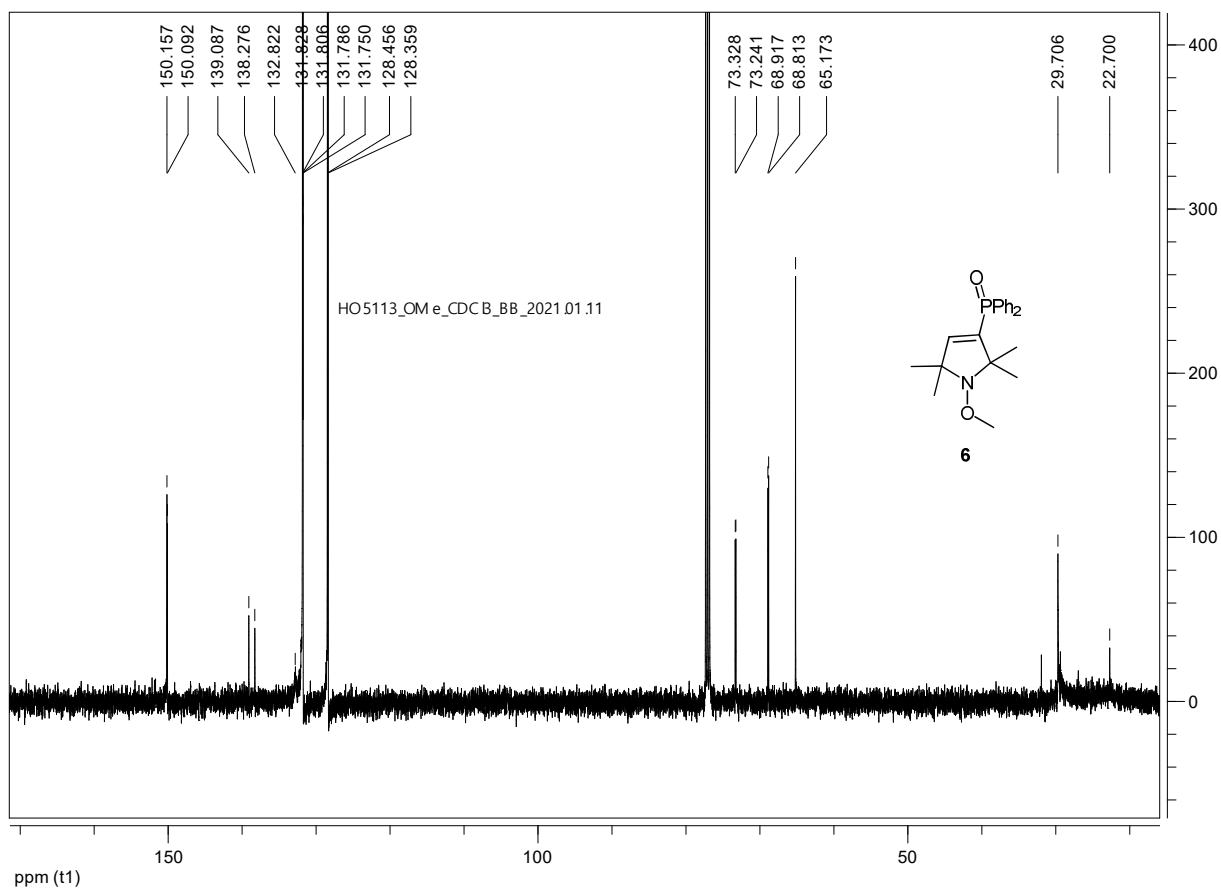
Instrument type and / or accessory

2021.03.26







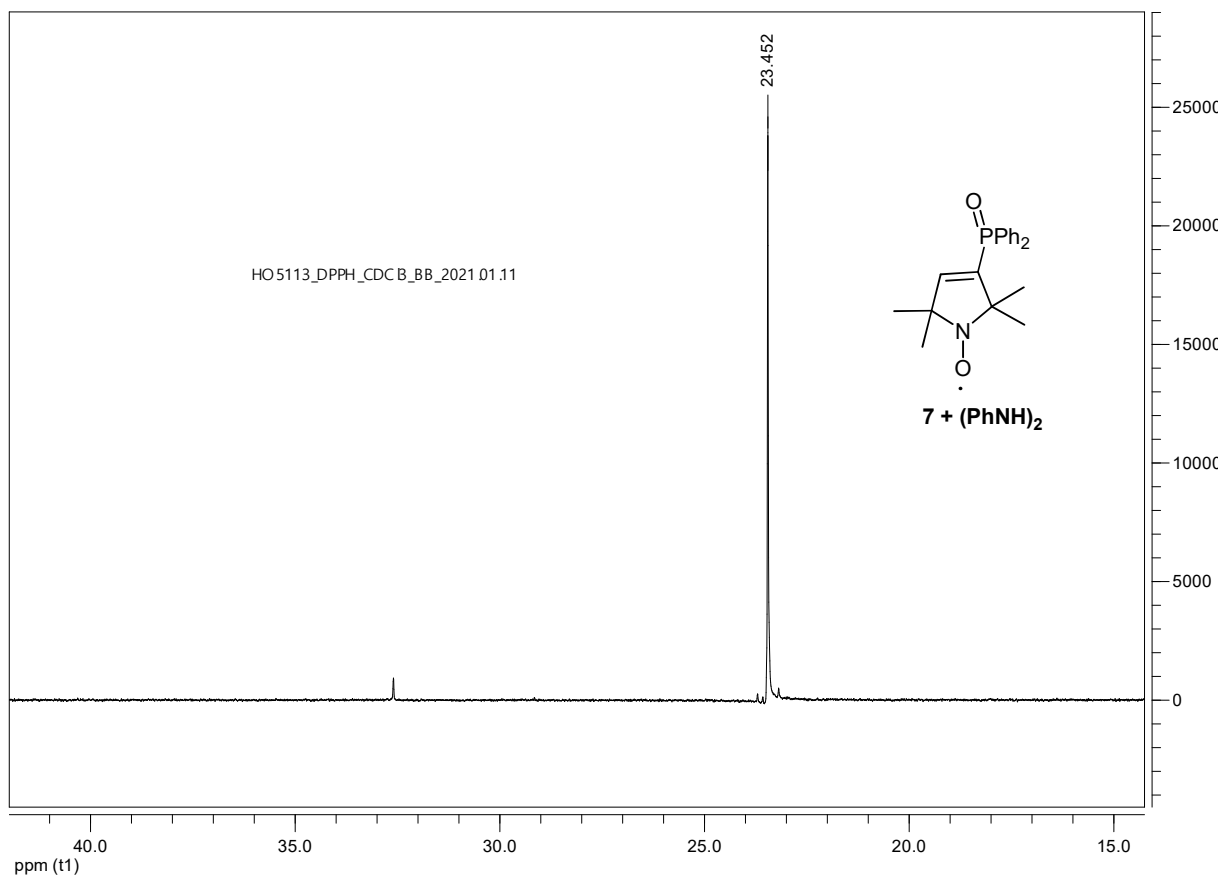
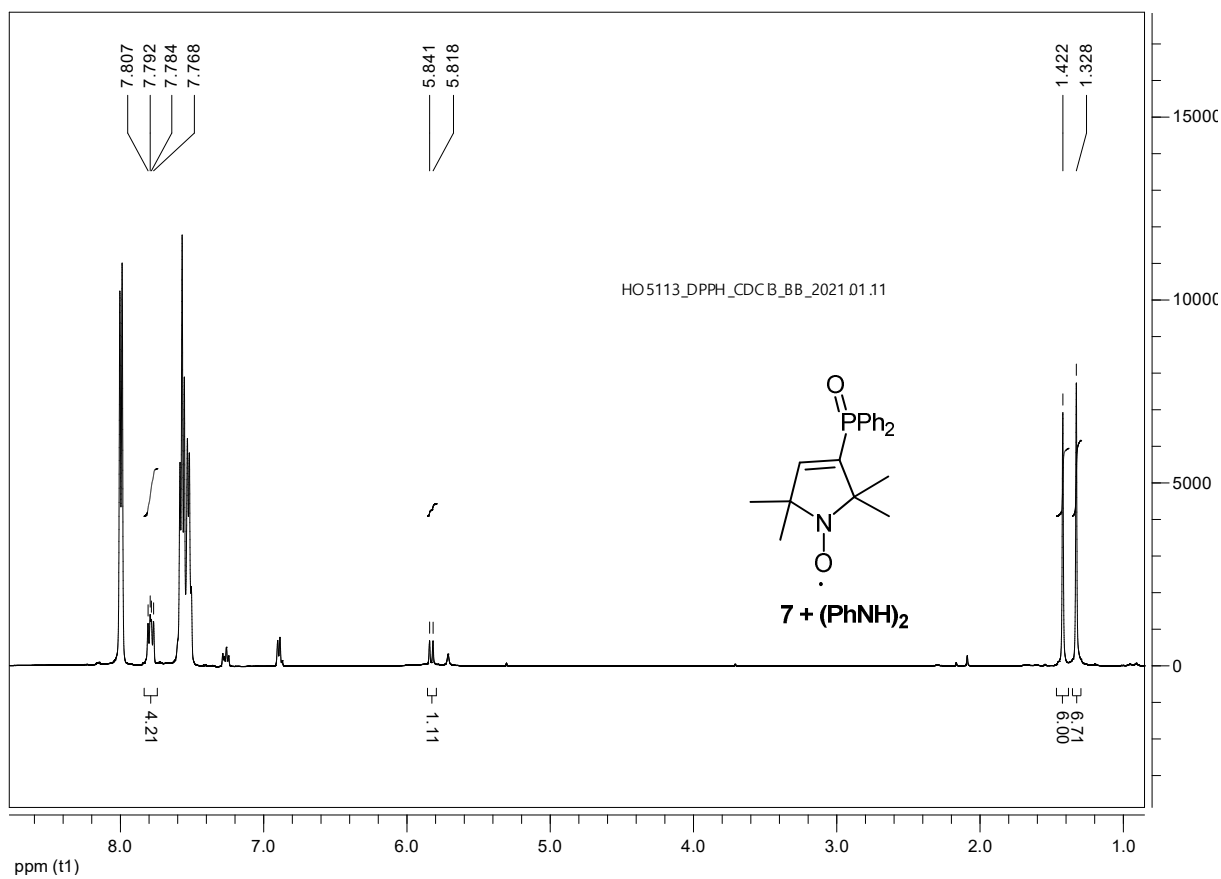


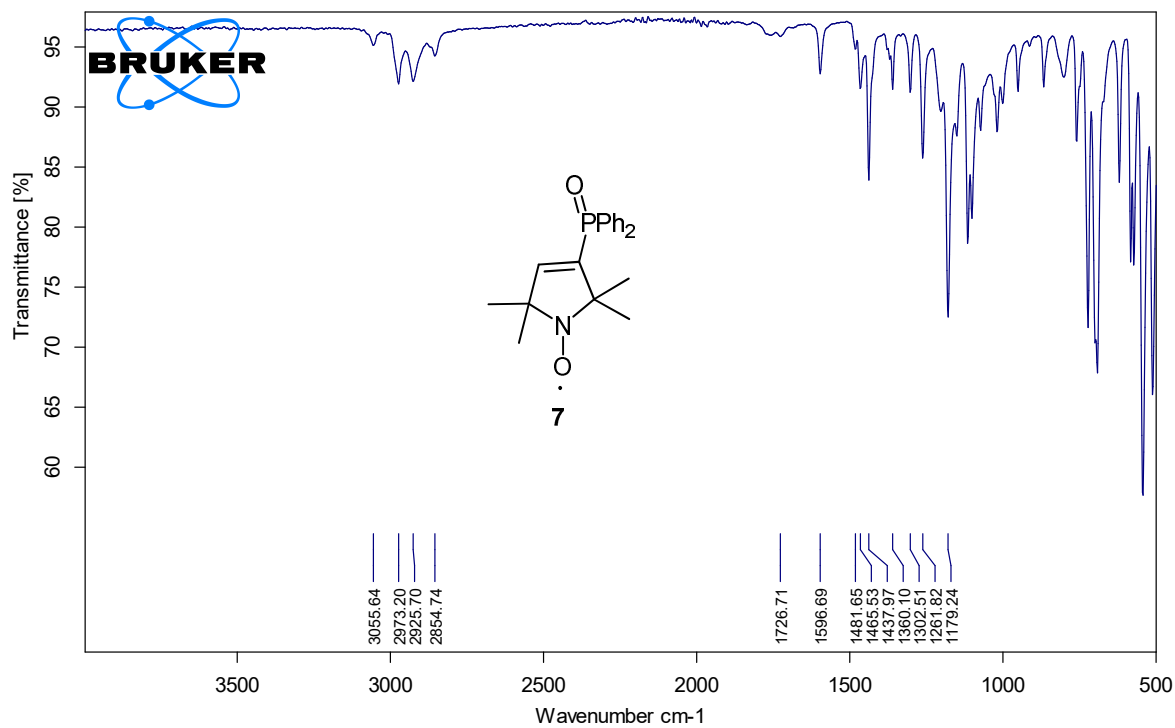
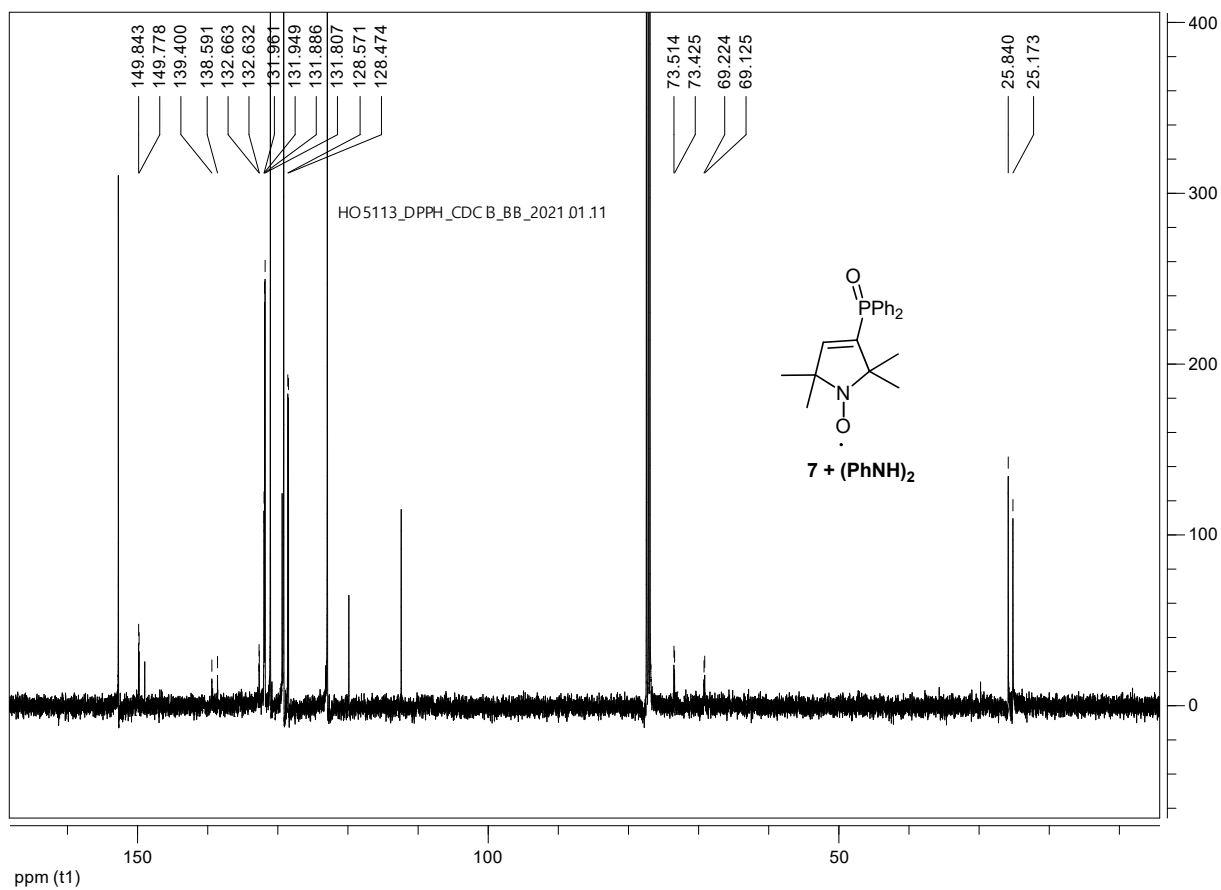
C:\OPUS_7.2.139\Measure\HO-5113-OMe.0

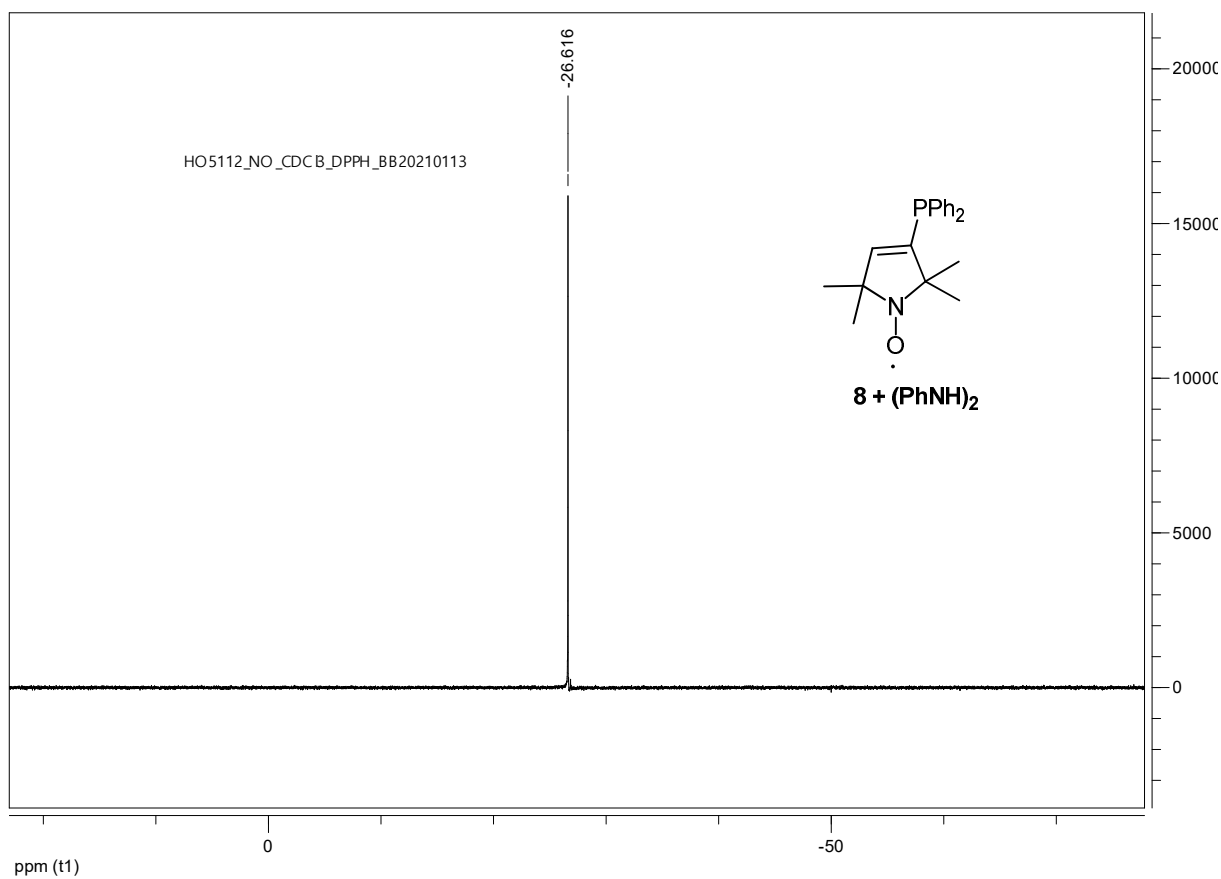
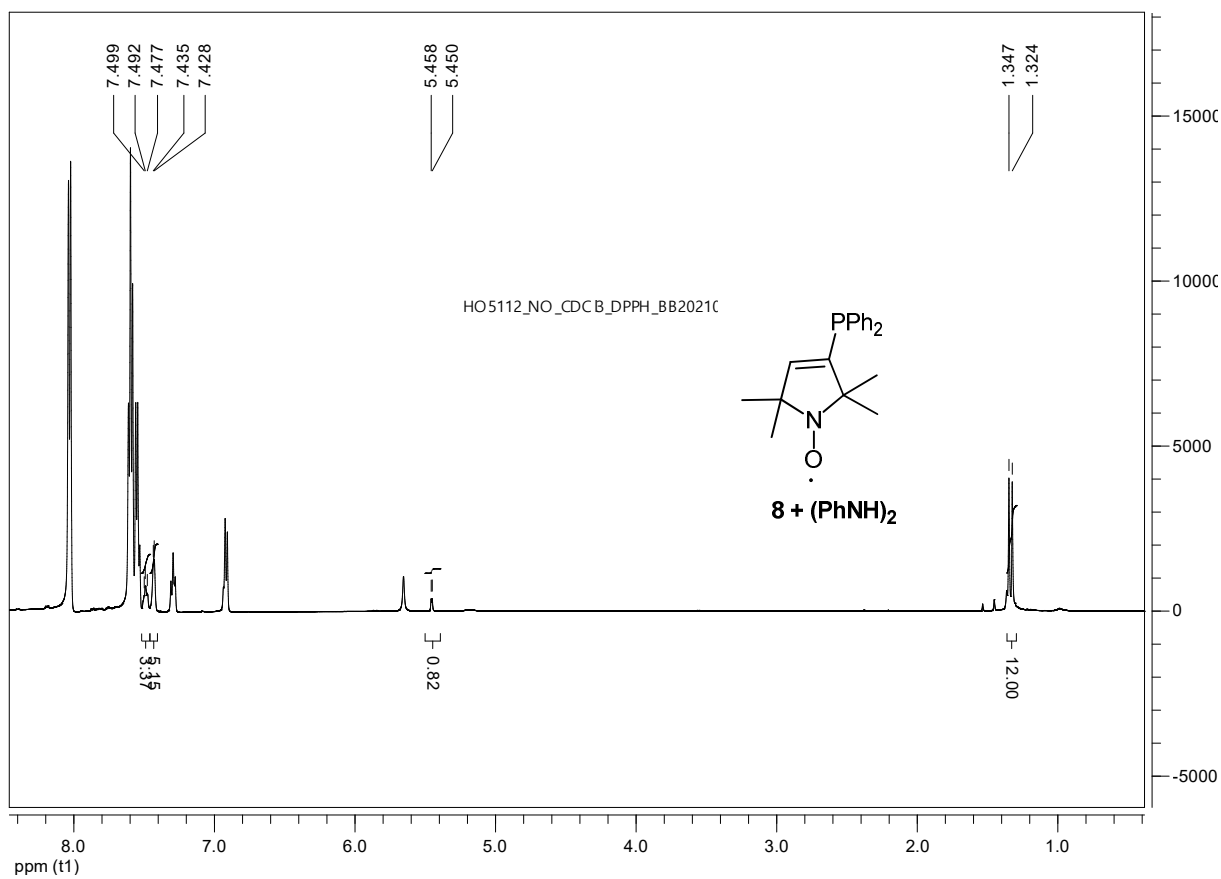
HO-5113-OMe

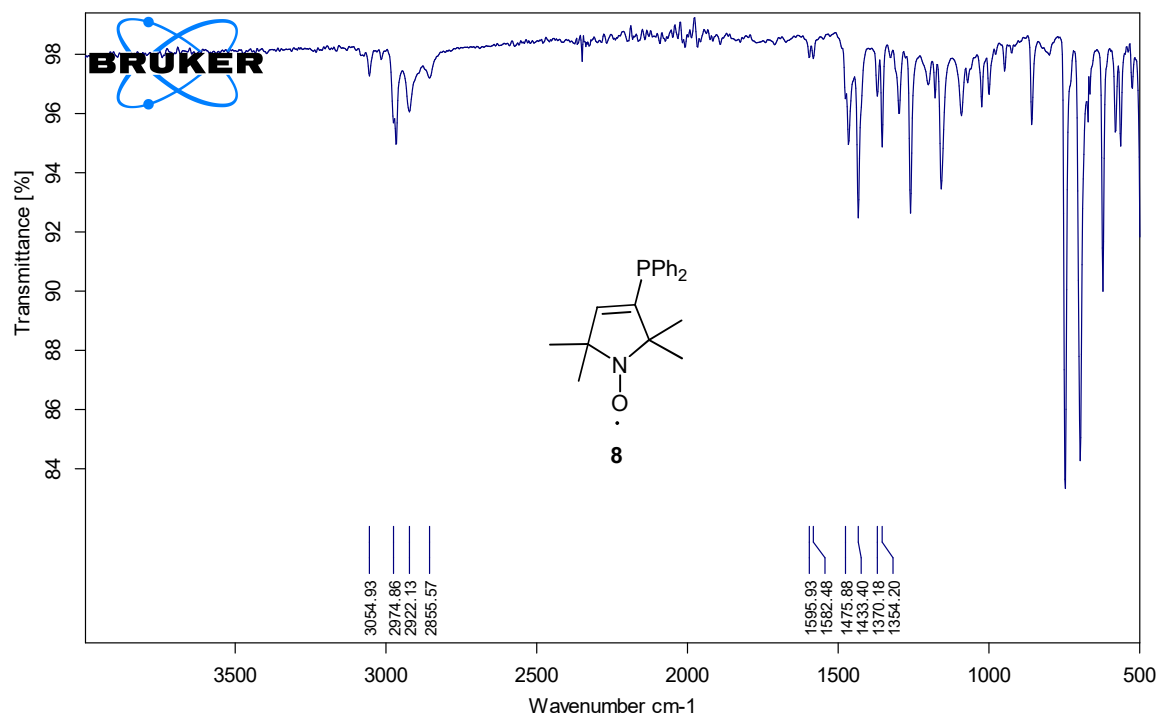
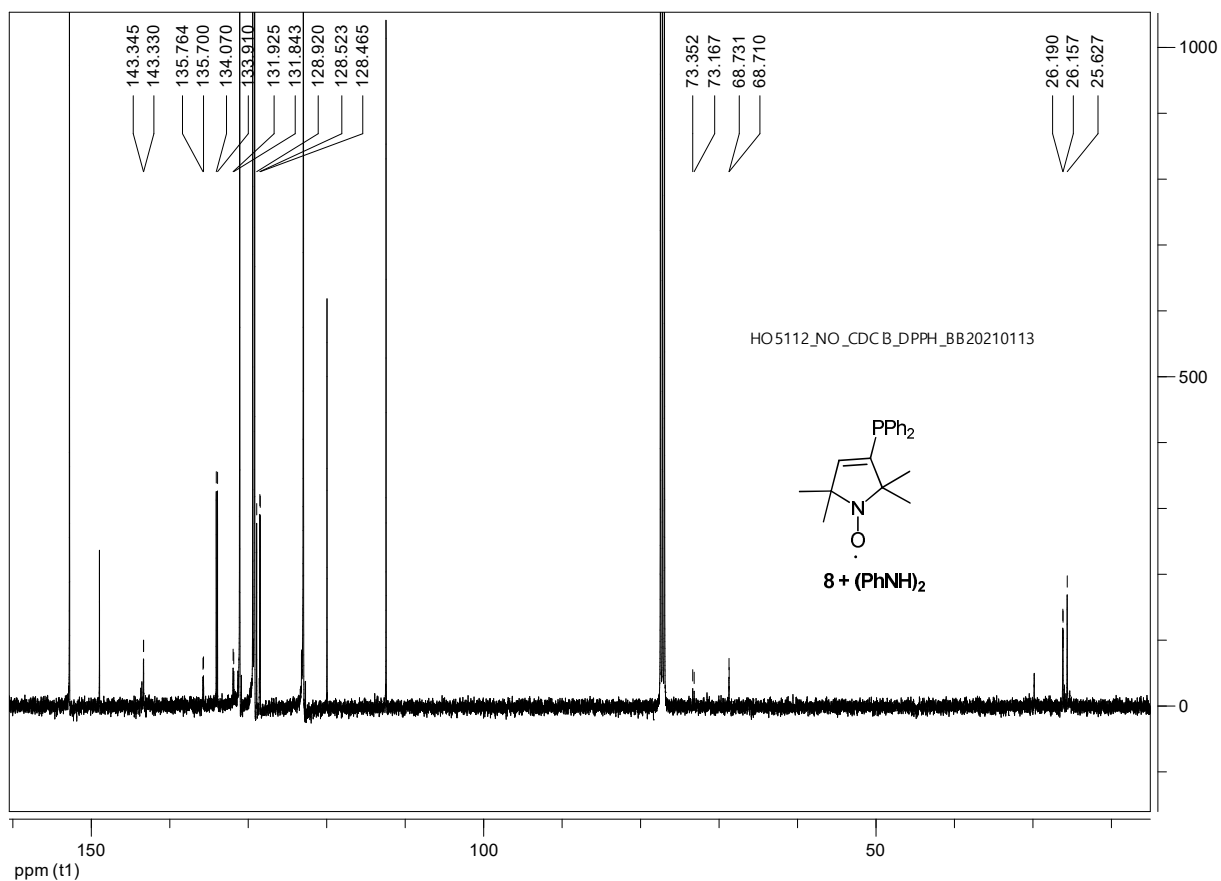
Instrument type and / or accessory

2021.01.25

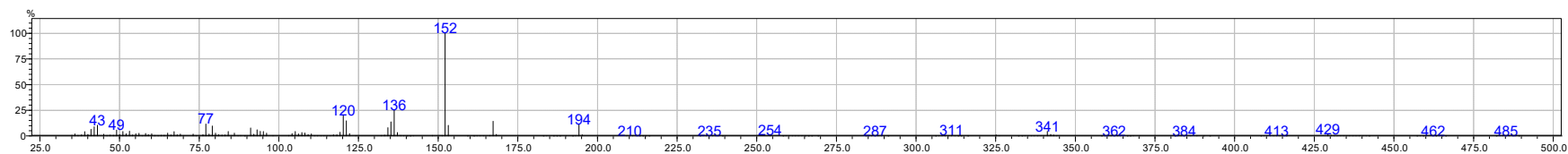
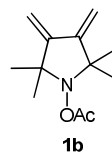




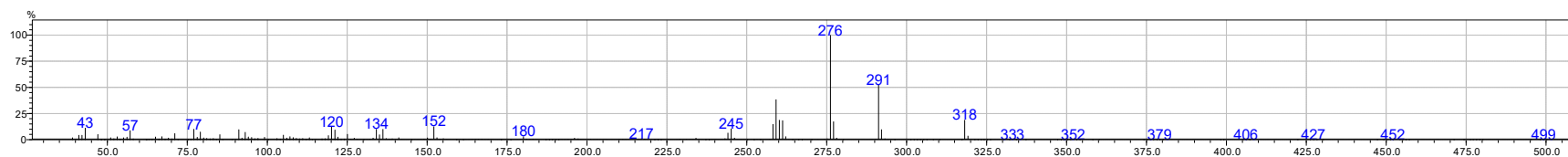
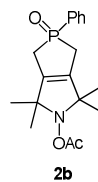




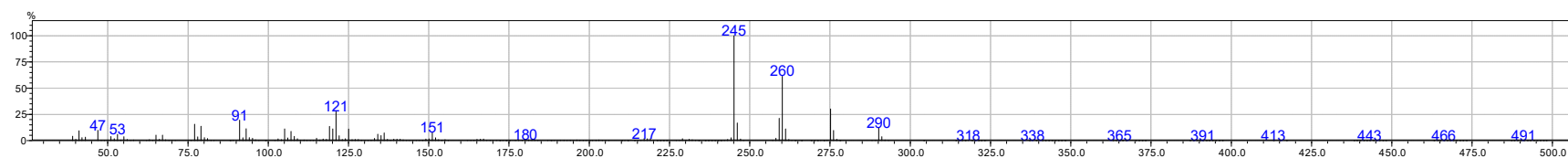
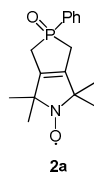
El-MS spectra of compound **1b**:



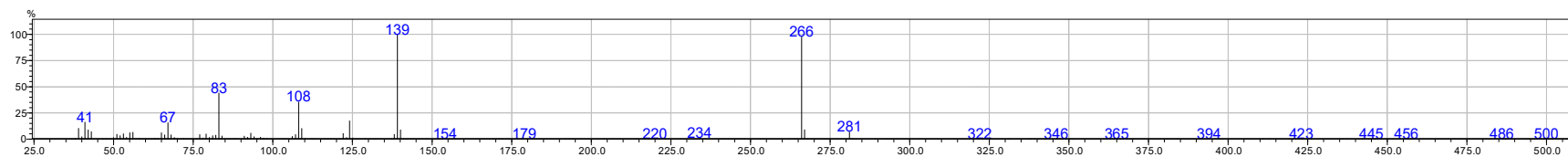
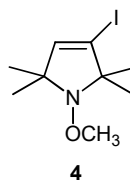
El-MS spectra of compound **2b**:



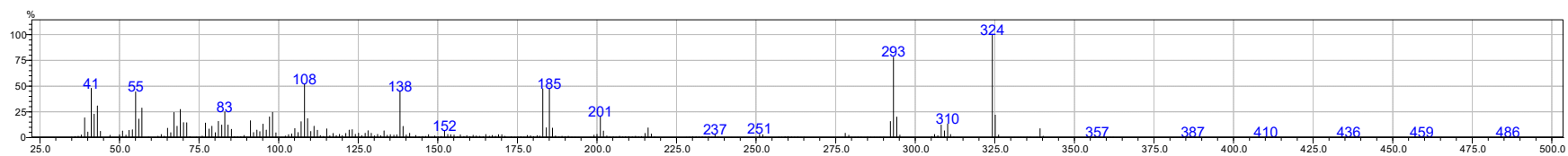
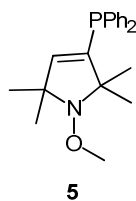
El-MS spectra of compound **2a**:



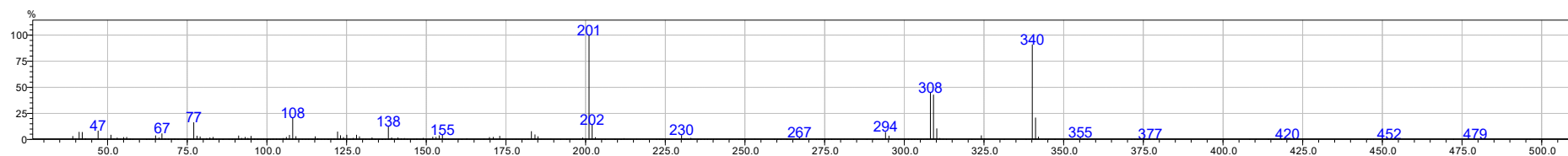
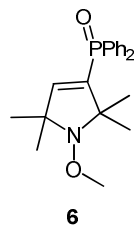
El-MS spectra of compound **4**:



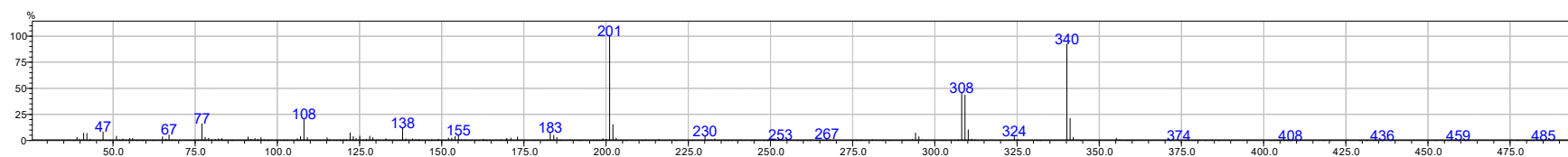
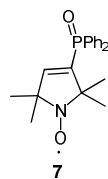
EI-MS spectra of compound **5**:



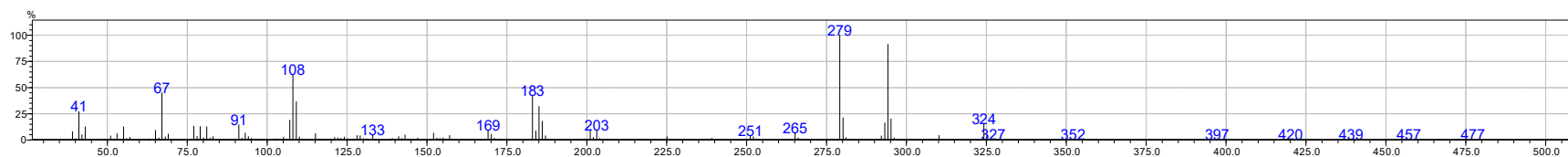
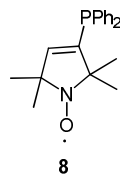
EI-MS spectra of compound **6**:



EI-MS spectra of compound **7**:



EI-MS spectra of compound **8**:



ESI-MS spectra of compound **9**:

HO_5114gyok #432 RT: 0.55 AV: 1 SB: 1 0.06 NL: 1.68E7
T: FTMS → p ESI Full ms [100.0000-800.0000]

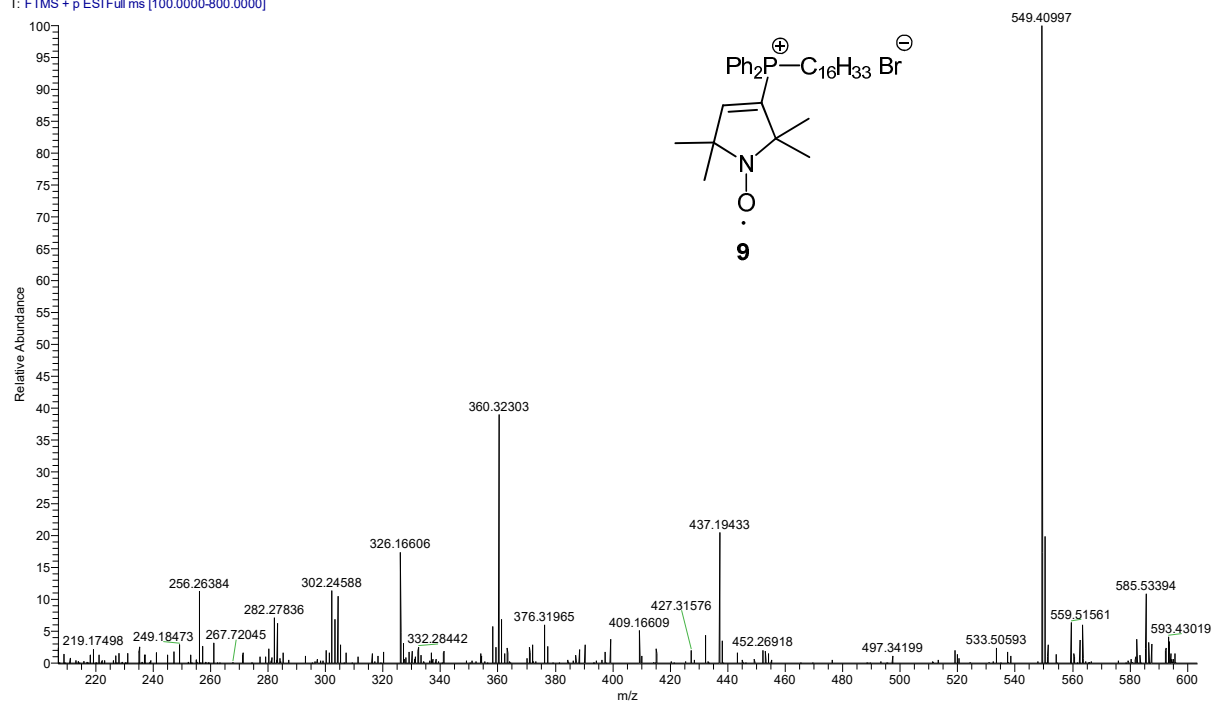
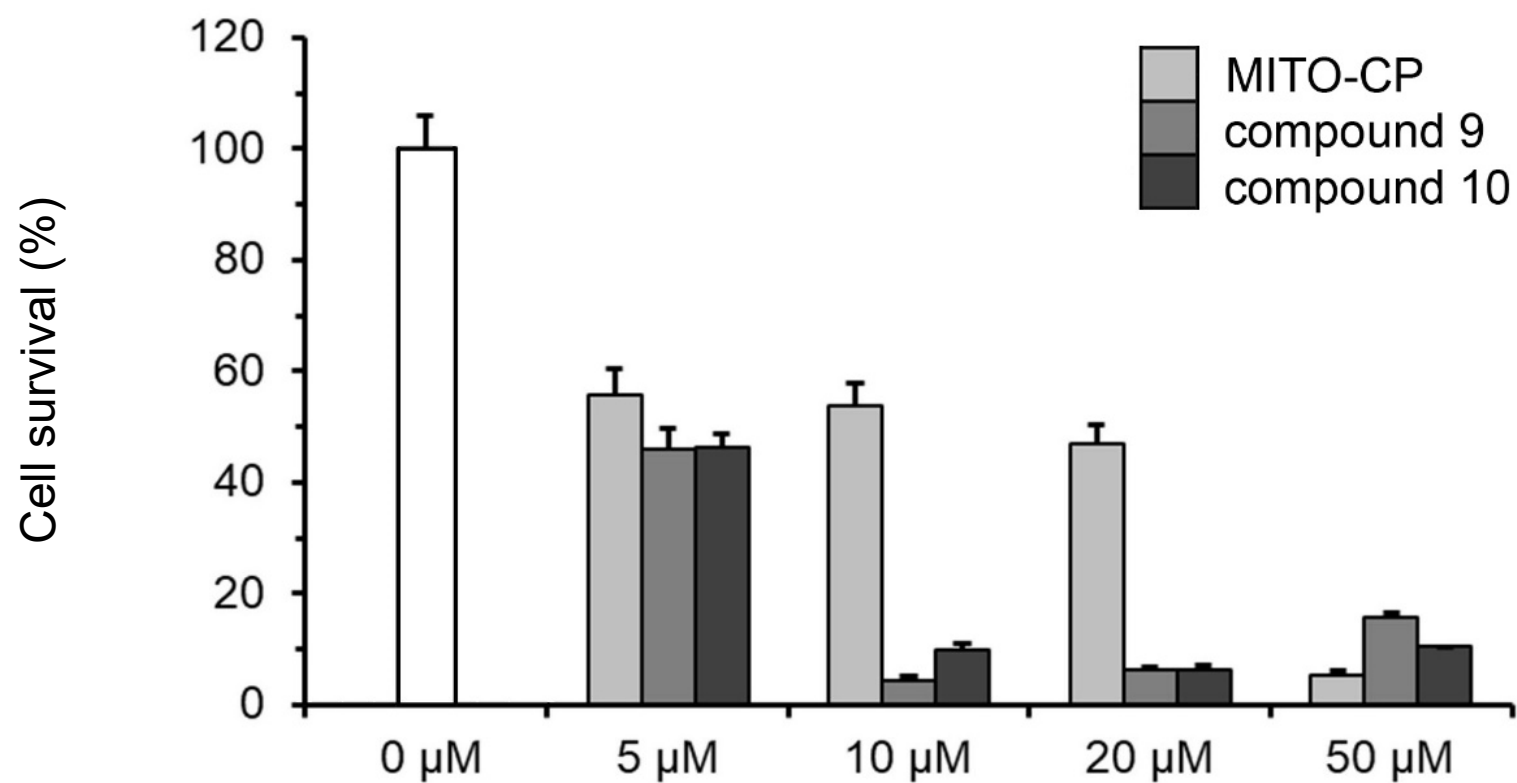


Table S1: Elemental analysis of new compounds synthesized

Compound	Formula	Calculated %			Found %		
		C	H	N	C	H	N
1b	C ₁₂ H ₁₉ NO ₂	68.87	9.15	6.69	68.75	8.95	6.59
2a	C ₁₆ H ₂₁ NO ₂ P	66.19	7.29	4.82	66.05	7.15	4.84
2b	C ₁₈ H ₂₄ NO ₃ P	64.85	7.26	4.20	64.65	7.15	4.17
4	C ₉ H ₁₆ INO	38.45	5.74	4.98	38.36	5.65	4.99
5	C ₂₁ H ₂₆ NOP	74.31	7.72	4.13	74.21	7.66	4.11
6	C ₂₁ H ₂₆ NO ₂ P	70.97	7.37	3.94	71.07	7.41	3.87
7	C ₂₀ H ₂₃ NO ₂ P	70.57	6.81	4.12	70.71	6.77	4.01
8	C ₂₀ H ₂₃ NOP	74.05	7.15	4.32	74.21	6.94	4.46
9	C ₃₆ H ₅₆ BrNOP	68.66	8.96	2.22	68.47	8.89	2.13

Figure S1: Preliminary biological data of compound 9 and cetyltriphenylphosphonium bromide (compound 10) compared to MITO-CP.



Supplementary Figure S1. Cytostatic effect of the substances on the MCF-7 human breast cancer line. The cells were treated with MITO-CP (light gray bars), compound 9 (gray bars) or compound 10 (dark gray bars) at the indicated concentrations for 24 h. Survival rate was presented as the % of the untreated cells (empty bar) mean + standard error of the mean (SEM) of three independent experiments each running in at least four parallels (n=12).