

Table S1. Effects of oral administration *Listea cubeba* Persoon fruits powder on body weight in A β -induced Alzheimer's mice.

Parameters/Group	CON	A β	MEL	LLCP	MLCP	HLCP
Initial body weight (g/mouse)	29.76 \pm 1.87 ^A	28.31 \pm 1.92 ^A	28.63 \pm 1.96 ^A	28.90 \pm 1.79 ^A	29.68 \pm 1.81 ^A	28.22 \pm 1.74 ^A
Body weight at week-8 (g/mouse)	31.28 \pm 1.48 ^A	30.07 \pm 2.15 ^A	30.05 \pm 1.99 ^{AB}	30.32 \pm 1.76 ^{AB}	29.62 \pm 1.66 ^{AB}	28.72 \pm 1.30 ^B

values are expressed as mean \pm SD (n=8). Means with different superscript letters within a row indicate significant differences ($p < 0.05$).

Means with the same superscript letters within a row are no significant difference between these values ($p < 0.05$). Abbreviations: symbols in-group represent in the Figure 2.

Table S2. Effects of of *Listea cubeba* Persoon fruit powder on relative organ weight (%) in A β -induced Alzheimer's mice.

Organ/Group	CON	A β	MEL	LLCP	MLCP	HLCP
Brain	1.49 \pm 0.05 ^B	1.47 \pm 0.10 ^B	1.54 \pm 0.11 ^{AB}	1.53 \pm 0.11 ^{AB}	1.55 \pm 0.08 ^{AB}	1.61 \pm 0.08 ^A
Heart	0.51 \pm 0.03 ^A	0.51 \pm 0.08 ^A	0.44 \pm 0.06 ^A	0.45 \pm 0.07 ^A	0.47 \pm 0.05 ^A	0.46 \pm 0.08 ^A
Liver	4.38 \pm 0.33 ^A	4.41 \pm 0.64 ^A	4.29 \pm 0.31 ^{AB}	4.08 \pm 0.08 ^{AB}	4.10 \pm 0.09 ^{AB}	3.97 \pm 0.25 ^B
Kidney	1.05 \pm 0.07 ^A	1.07 \pm 0.07 ^A	1.04 \pm 0.05 ^A	1.03 \pm 0.05 ^A	1.07 \pm 0.06 ^A	1.06 \pm 0.03 ^A

Relative organ weight = (organ weight/body weight) x 100%

Values are expressed as mean \pm SD (n=8). Means with different superscript letters within a row indicate significant differences ($p < 0.05$).

Means with the same superscript letters within a row are no significant difference between these values ($p < 0.05$). Abbreviations: symbols represent in the Figure 2.

Table S3. Effects of *Listea cubeba* Persoon fruit powder on serum biochemical values in A β -induced Alzheimer's mice.

Serum parameters/Group	CON	A β	MEL	LLCP	MLCP	HLCP
AST (U/L)	43.12 \pm 3.09 ^A	38.00 \pm 3.74 ^{BC}	41.12 \pm 4.29 ^{AB}	40.50 \pm 3.38 ^{ABC}	40.12 \pm 4.05 ^{ABC}	36.62 \pm 2.92 ^C
ALT (U/L)	33.50 \pm 4.98 ^A	28.50 \pm 5.42 ^{BC}	29.50 \pm 2.87 ^B	27.12 \pm 2.58 ^{BC}	25.62 \pm 3.99 ^{BC}	24.62 \pm 2.61 ^C
BUN (mg/dL)	37.62 \pm 1.77 ^A	34.56 \pm 2.63 ^{BC}	33.67 \pm 1.93 ^C	36.15 \pm 2.52 ^{AB}	31.20 \pm 1.58 ^D	27.80 \pm 2.36 ^E
Creatinine (mg/dL)	0.31 \pm 0.04 ^A	0.31 \pm 0.03 ^A	0.29 \pm 0.02 ^A	0.30 \pm 0.02 ^A	0.31 \pm 0.01 ^A	0.25 \pm 0.03 ^B
Uric acid (mg/dL)	3.63 \pm 0.67 ^{AB}	4.02 \pm 1.78 ^{AB}	3.55 \pm 1.02 ^{AB}	3.83 \pm 0.74 ^{AB}	4.70 \pm 1.06 ^A	3.18 \pm 0.40 ^B
Cholesterol-total (mg/dL)	124.37 \pm 9.73 ^A	124.75 \pm 12.25 ^A	123.50 \pm 13.45 ^A	119.12 \pm 9.20 ^{AB}	117.25 \pm 9.43 ^{AB}	108.25 \pm 6.06 ^B
HDL-C (mg/dL)	92.50 \pm 8.08 ^A	92.00 \pm 11.32 ^A	92.12 \pm 11.36 ^A	88.87 \pm 7.64 ^{AB}	91.25 \pm 6.88 ^{AB}	82.25 \pm 4.26 ^B
LDL-C (mg/dL)	21.37 \pm 2.55 ^A	19.75 \pm 3.24 ^{AB}	18.25 \pm 2.37 ^{AB}	17.87 \pm 3.75 ^{BC}	16.75 \pm 3.19 ^{BC}	14.75 \pm 2.60 ^C
HDL-C/LDL-C	4.35 \pm 0.43 ^B	4.77 \pm 1.04 ^{AB}	4.95 \pm 0.39 ^{AB}	5.15 \pm 1.13 ^{AB}	5.59 \pm 1.01 ^A	5.71 \pm 0.99 ^A

Values are expressed as mean \pm SD (n=8). Means with different superscript letters (A and B, A and C, A and D, A and E, B and C, B and D, B and E or A and BC....and so on) within a row indicate significant differences ($p < 0.05$). Means with the same superscript letters (A and AB, AB and B, BC and C or ABC and A, B, or C.... and so on) within a row are no significant difference between these values ($p < 0.05$). AST: aspartate aminotransferase; ALT: alanine aminotransferase; BUN: blood urea nitrogen. Abbreviations: symbols in-group represent in the Figure 2. Effects on escape time of reference memory task

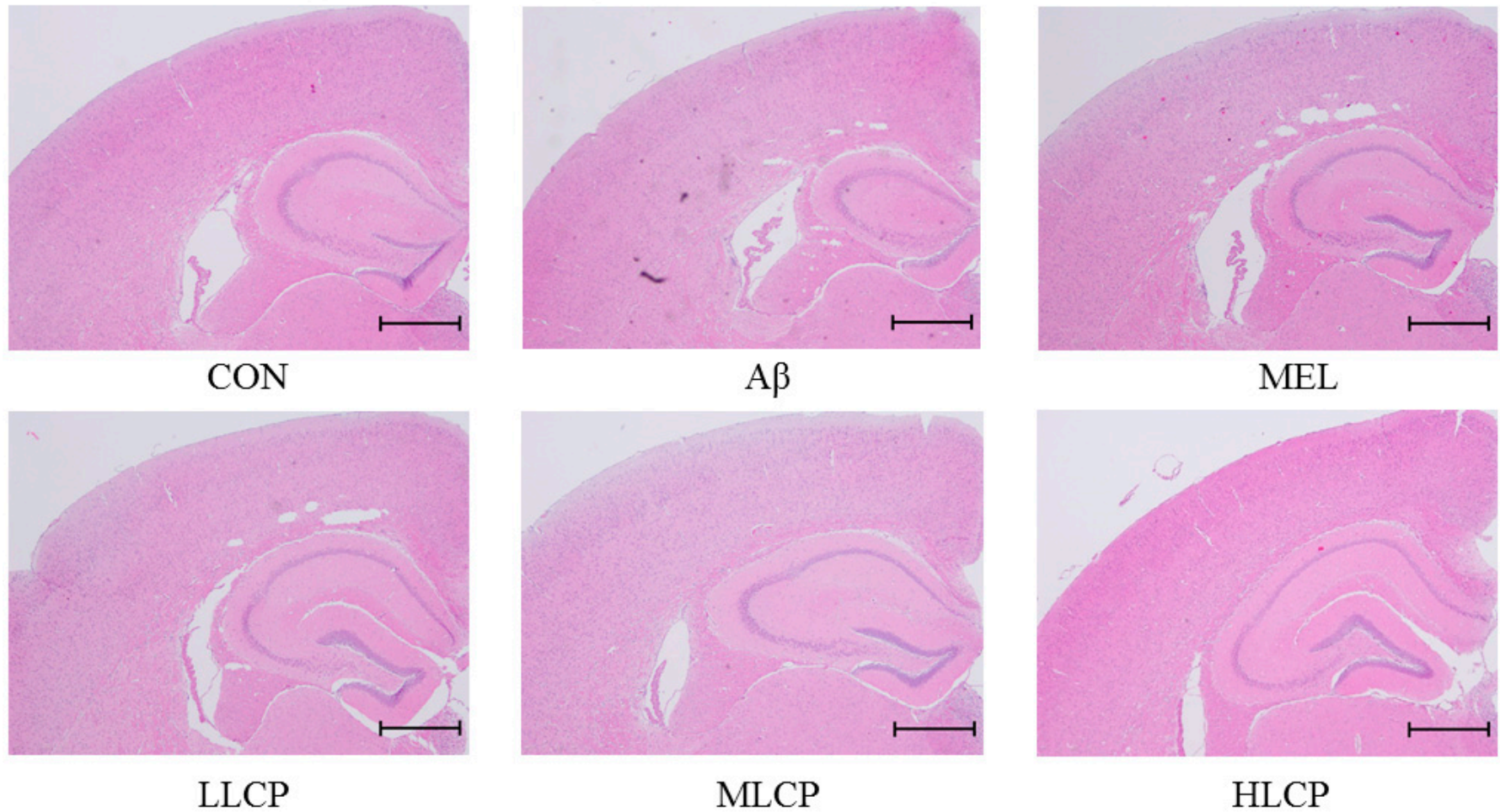


Figure S1(A) Effects of *Listea cubeba* Persoon fruit powder on histopathological alterations of brain in Aβ-induced Alzheimer's mice. The images were taken 40X magnification with H&E staining. Scale bars = 600 μm.

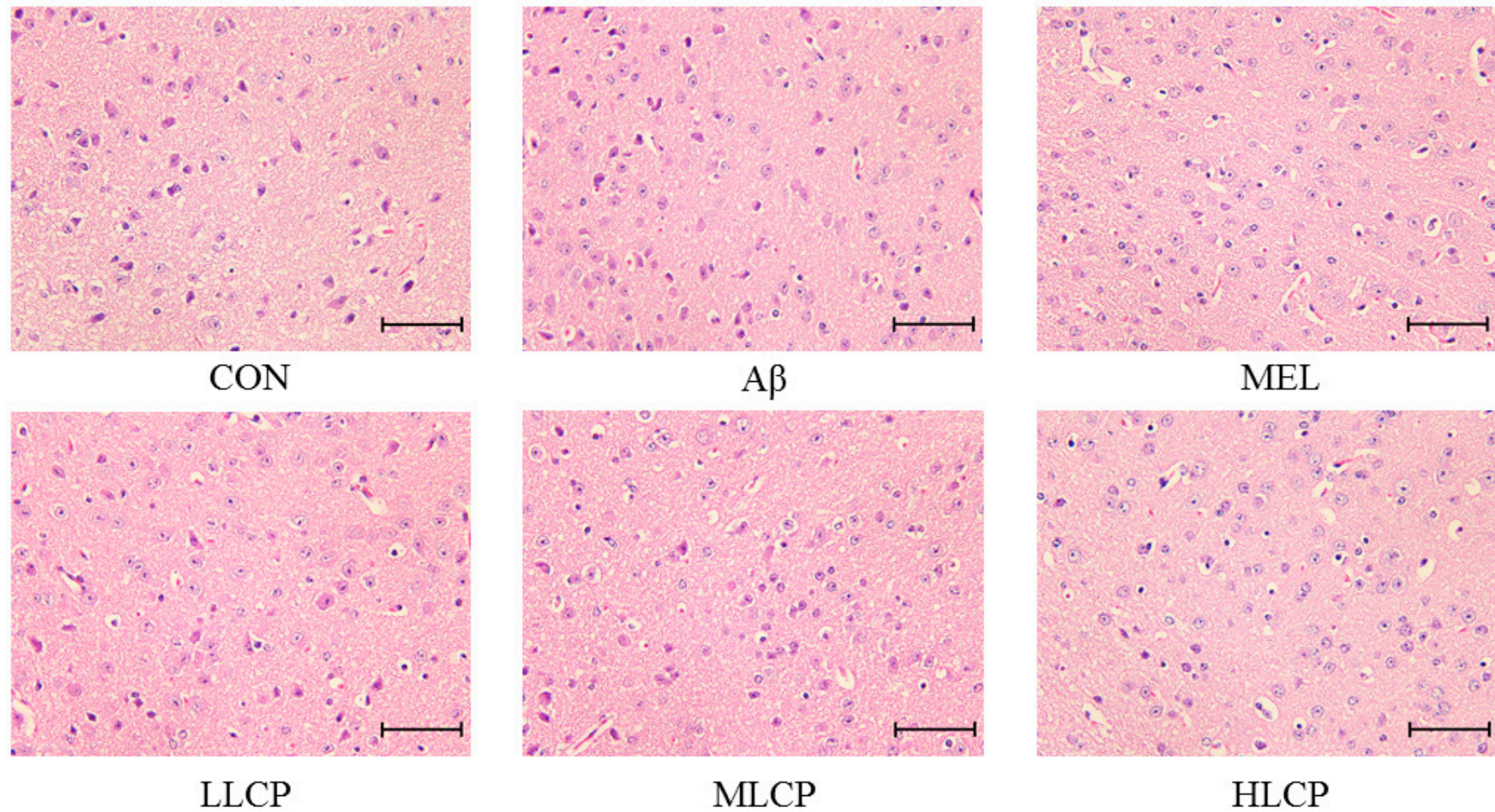


Figure S1(B) Effects of *Listea cubeba* Persoon fruit powder on histopathological alterations of brain in A β -induced Alzheimer's mice. The images were taken 400X magnification with H&E staining. Scale bars = 60 μ m.