

SUPPLEMENTARY MATERIAL

Chlovalicin B, a Chlorinated Sesquiterpene Isolated from the Marine Mushroom *Digitatispora marina*

Marte Jenssen¹, Venke Kristoffersen¹, Kumar Motiram-Corral², Johan Isaksson³,
Teppo Rämä¹, Jeanette H. Andersen¹, Espen H. Hansen¹ and Kine Østnes
Hansen^{1,*}

¹*Marbio, UiT–The Arctic University of Norway, Tromsø N-9037, Norway*

²*Servei de Resonància Magnètica Nuclear, Universitat Autònoma de Barcelona, E-08193
Bellaterra, Barcelona, Spain*

³*Department of Chemistry, UiT–The Arctic University of Norway, Tromsø N-9037, Norway*

*Corresponding author

E-mail: kine.o.hanssen@uit.no

Supplementary Material Table of Contents

- Figure S1** Structure of chlovalicin B (**1**) and the previously isolated compounds chlovalicin, ovalicin, fumagillin and ligerin
- Figure S2** *Digitatispora marina* in different growth conditions
- Figure S3** Low-collision and high-collision energy mass spectra of chlovalicin B (**1**) in ESI+

NMR spectroscopic data for chlovalicin B (**1**)

- Figure S4** ^1H NMR (600 MHz, DMSO- d_6) spectrum of chlovalicin B (**1**)
- Figure S5** ^{13}C NMR (151 MHz, DMSO- d_6) spectrum of chlovalicin B (**1**)
- Figure S6** HSQC + HMBC (600 MHz, DMSO- d_6) spectrum of chlovalicin B (**1**)
- Figure S7** COSY (600 MHz, DMSO- d_6) spectrum of chlovalicin B (**1**)
- Figure S8** H2BC (600 MHz, DMSO- d_6) spectrum of chlovalicin B (**1**)
- Figure S9** ROESY (600 MHz, DMSO- d_6) spectrum of chlovalicin B (**1**)

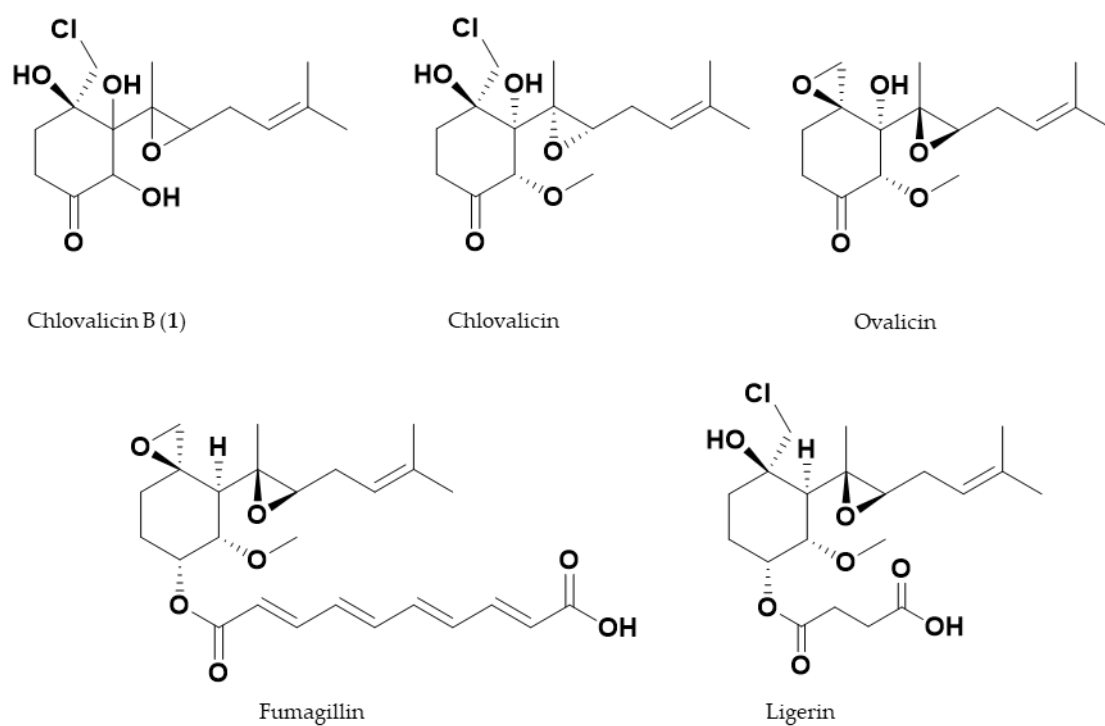


Figure S1. Structure of chlovalicin B (1) and the previously isolated compounds chlovalicin, ovalicin, fumagillin and ligerin.



Figure S2. *Digitatispora marina* in different growth conditions. 1) *D. marina* growing on driftwood of *Betula* sp. Photo: Teppo Rämä, 2) *D. marina* grown in liquid culture in malt extract medium supplemented with sea salts. Photo: Marte Jenssen, 3) *D. marina* grown on corn meal agar (top) and malt extract agar (bottom). Photo: Marte Jenssen

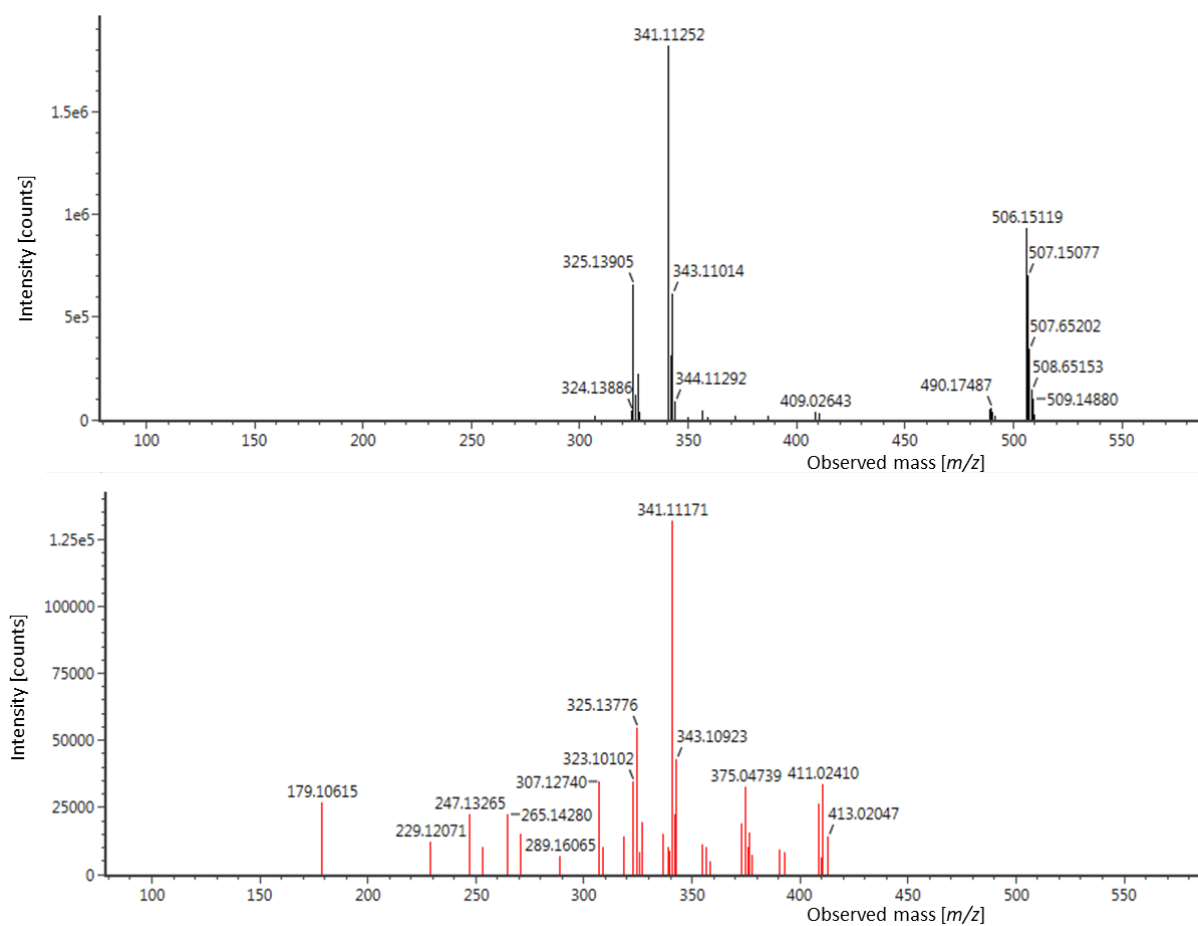


Figure S3. Low-collision (top) and high-collision (bottom) energy mass spectra of chlovalicin B (**1**) in ESI+

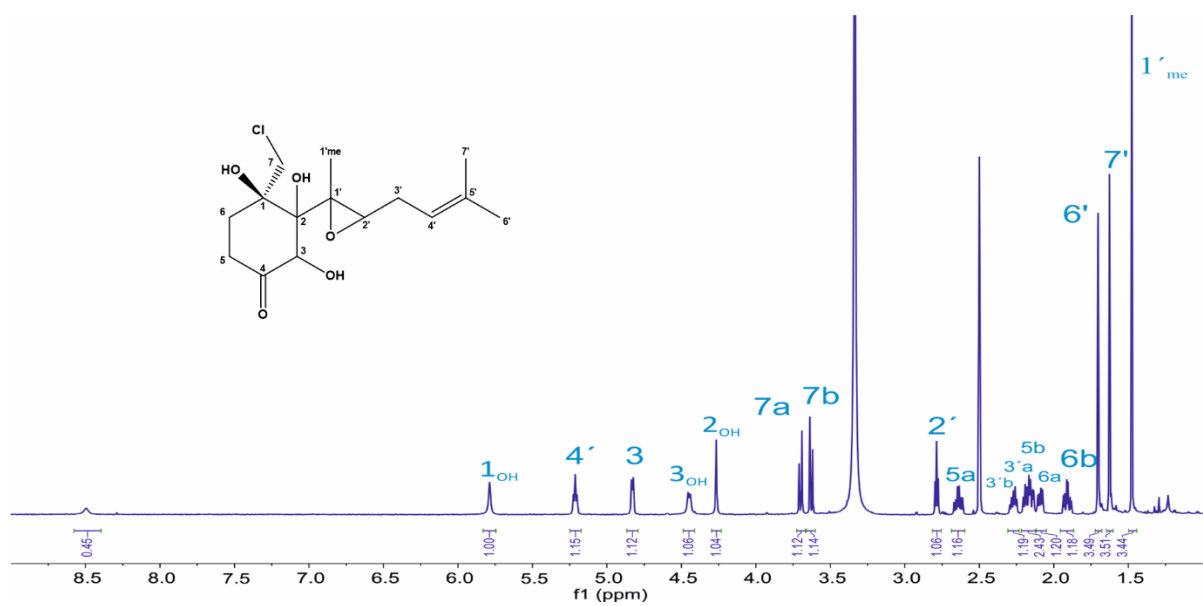


Figure S4. ^1H NMR (600 MHz, $\text{DMSO}-d_6$) spectrum of chlovalicin B (**1**)

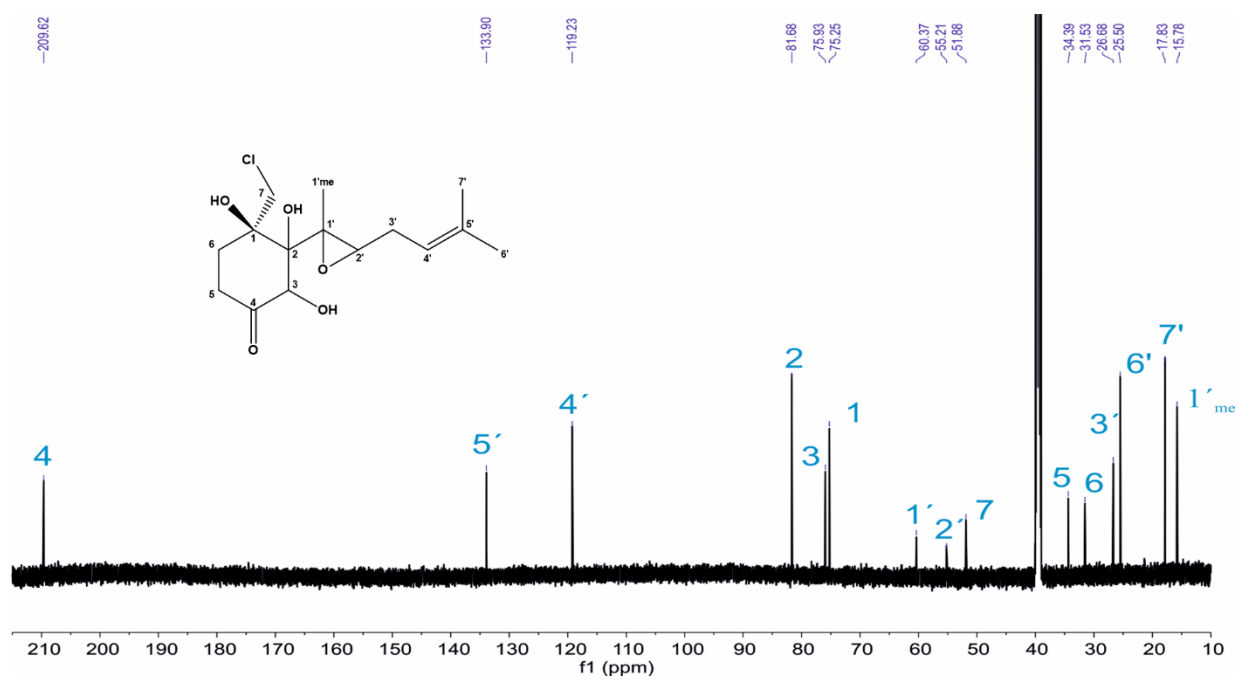


Figure S5. ^{13}C NMR (151 MHz, $\text{DMSO}-d_6$) spectrum of chlovalicin B (**1**)

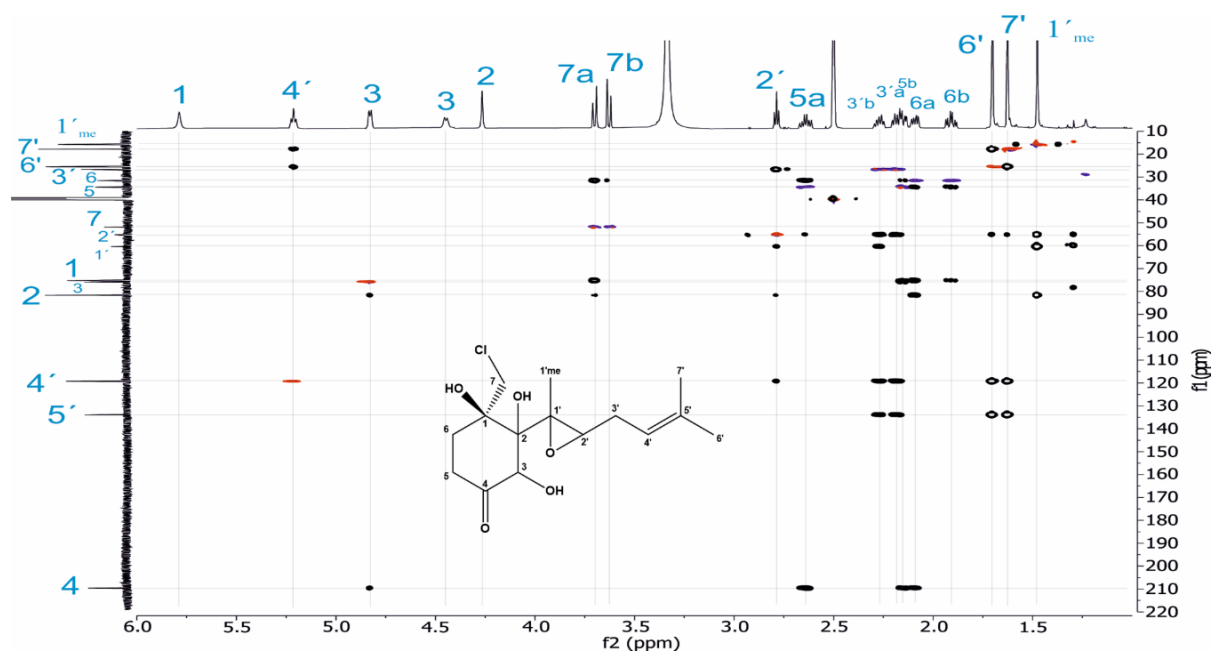


Figure S6. HSQC + HMBC (600 MHz, DMSO- d_6) spectrum of chlovalicin B (**1**)

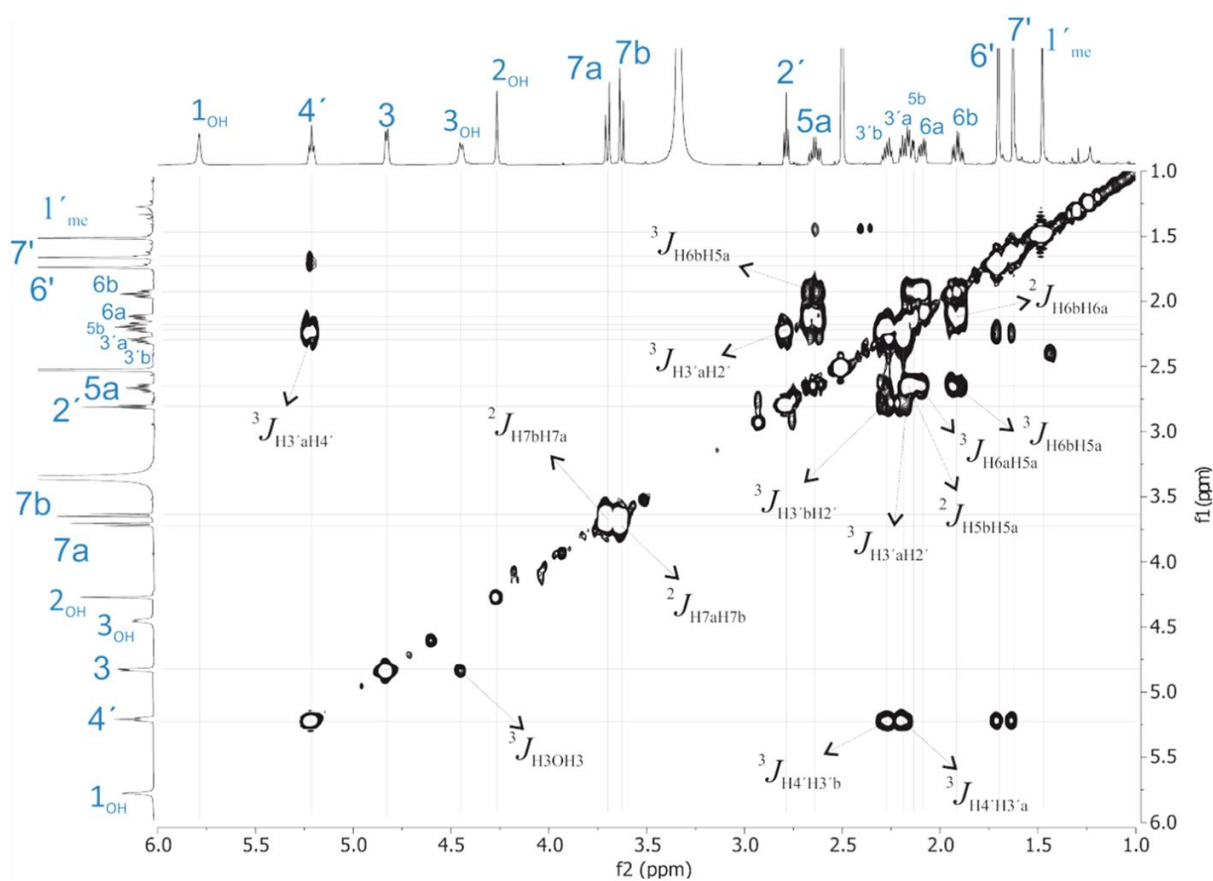


Figure S7. COSY (600 MHz, DMSO- d_6) spectrum of chlovalicin B (**1**)

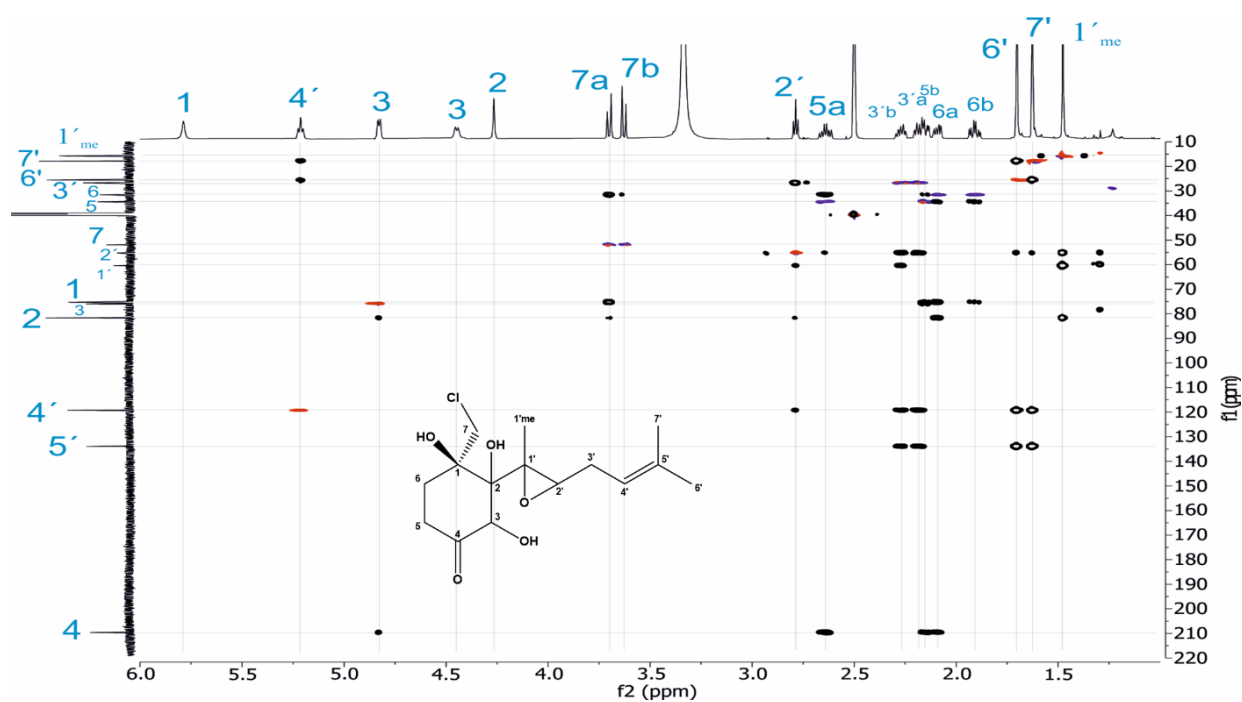


Figure S8. H2BC (600 MHz, DMSO- d_6) spectrum of chlovalicin B (1)

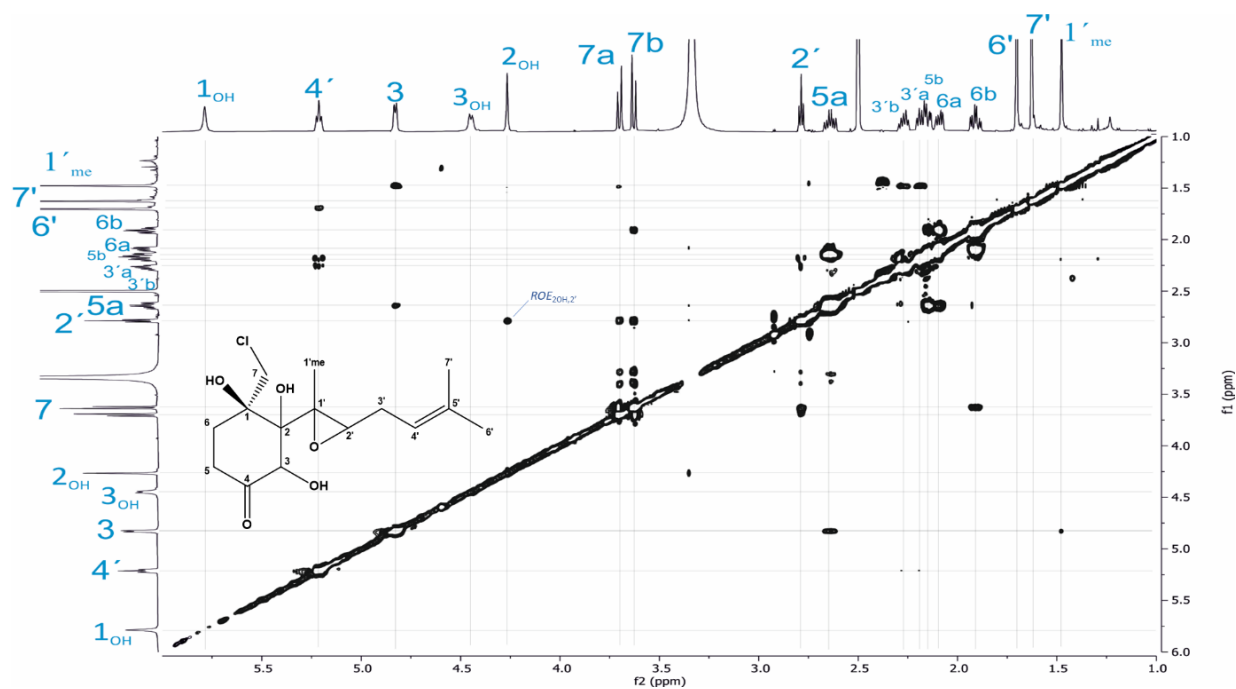


Figure S9. ROESY (600 MHz, DMSO- d_6) spectrum of chlovalicin B (1)