

Supporting Information Available

Anti-fatigue peptides from the enzymatic hydrolysates of *Cervus elaphus* blood

Jun-Jiang Lv ^{1*}, Yan Liu ¹, Xiao-Yan Zeng ¹, Jia Yu ¹, Yan Li ¹, Xiao-Qin Du ², Zhong-Bao Wu ^{2*}, Shi-Lei Hao ³, Bo-Chu Wang ^{3*}

¹*Chongqing Engineering Research Center of Pharmaceutical Sciences, Chongqing Medical and Pharmaceutical College, Chongqing 401331, China.*

²*Bio-resource Research and Utilization Joint Key Laboratory of Sichuan and Chongqing, Chongqing Institute of Medical Planting Material, Chongqing 408435, China*

³*Key Laboratory of Biorheological Science and Technology, Ministry of Education, College of Bioengineering, Chongqing University, Chongqing 400030, China.*

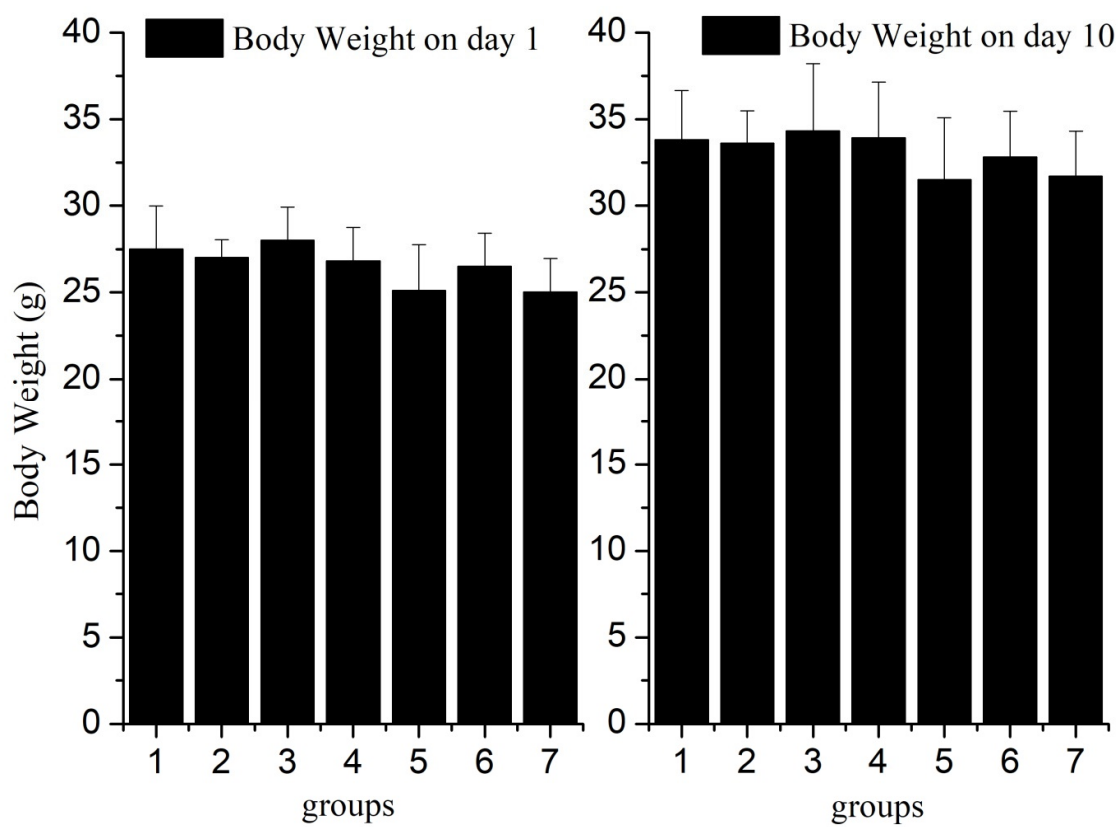
* Corresponding author. Fax and telephone: (+) 86-023-61969068.

E-mail address: ljicqu@126.com (J.J. Lv), wangbc2000@126.com (B.C. Wang), wuzhongbao7788@sina.com (Z.B. Wu)

Table of contents

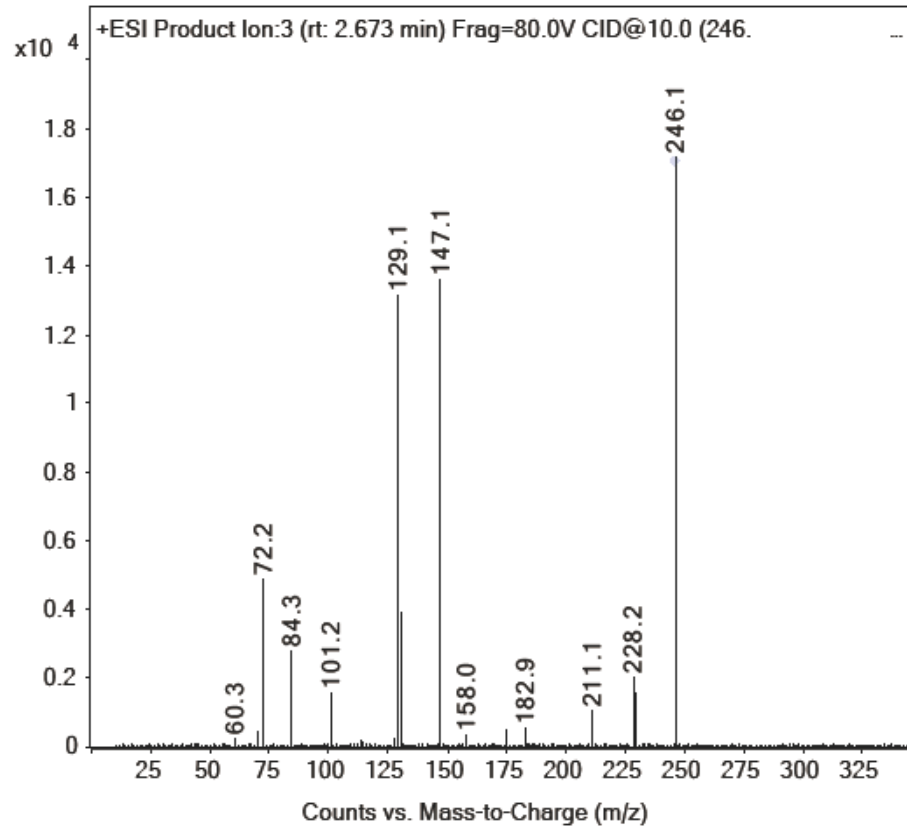
1.	S1 Body weight of experimental mice	3
2.	S2 MS/MS spectrum of VQ	4
3.	S3 MS/MS spectrum of AQ	5
4.	S4 MS/MS spectrum of VVSA	6
5.	S5 MS/MS spectrum of V L(I)S	6
6.	S6 MS/MS spectrum of V L(I)	7
7.	S7 MS/MS spectrum of FD	8
8.	S8 MS/MS spectrum of L(I)L(I)	10
9.	S9 MS/MS spectrum of DQ	10
10.	S10 MS/MS spectrum of VVYP	11
11.	S11 MS/MS spectrum of FL(I)	12
12.	S12 MS/MS spectrum of VAN	13
13.	S13 MS/MS spectrum of L(I)L(I)VT	14
14.	S14 MS/MS spectrum of PHPTT	15
15.	S15 MS/MS spectrum of EVAF	16
16.	S16 MS/MS spectrum of VL(I)DAF	17
17.	S17 MS/MS spectrum of L(I)H	18
18.	S18 MS/MS spectrum of VN	19
19.	S19 MS/MS spectrum of VGH	20
20.	S20 MS/MS spectrum of VT	21
21.	S21 MS/MS spectrum of TVA	22
22.	S22 MS/MS spectrum of L(I)Q	23
23.	S23 MS/MS spectrum of L(I)	24
24.	S24 MS/MS spectrum of L(I)T	25
25.	S25 MS/MS spectrum of AL(I)	26
26.	S26 MS/MS spectrum of L(I)SE	27
27.	S27 MS/MS spectrum of VL(I)K	28
28.	S28MS/MS spectrum of L(I)VT	29
29.	S29 MS/MS spectrum of L(I)VE	30
30.	S30MS/MS spectrum of L(I)SAL(I)	31
31.	S31 MS/MS spectrum of AF	32
32.	S32 MS/MS spectrum of WT	33

1. S1 Body weight of experimental mice



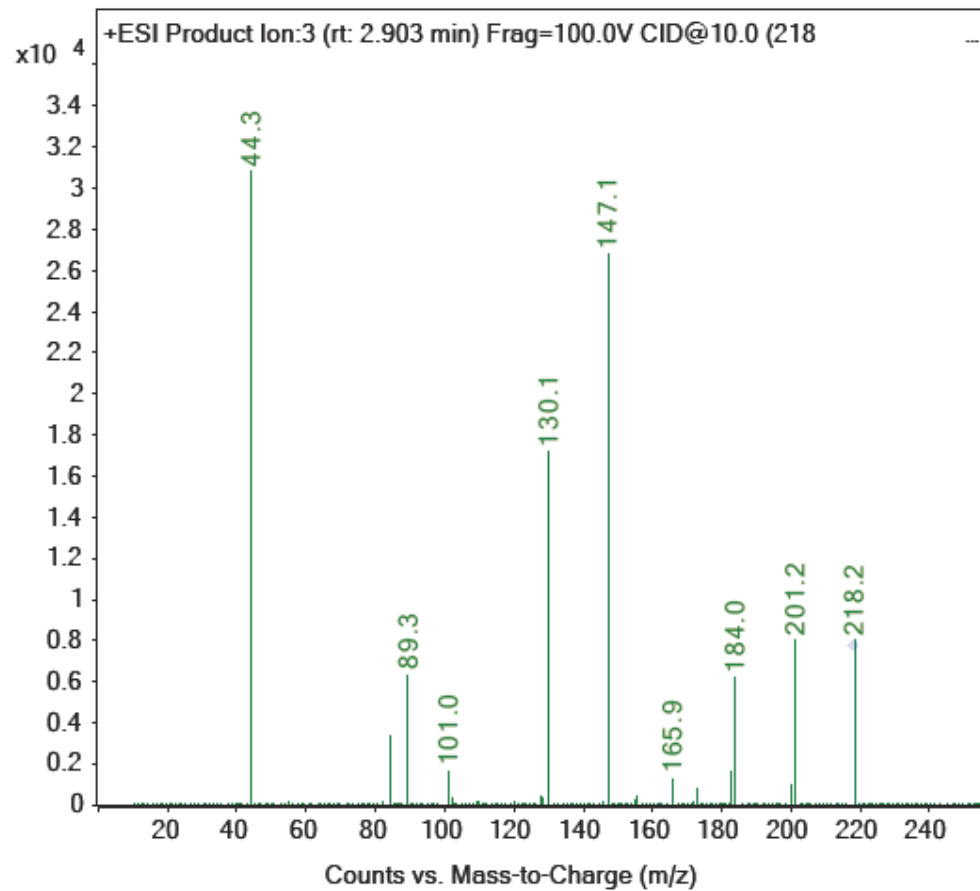
2. S2 MS/MS spectrum of VQ

Sample Name	LX-nm-1-MSMS	Position	P1-A1	Instrument Name	Instrument 1
User Name	YU JIA	Inj Vol	10	InjPosition	
Sample Type	Sample	IRM Calibration Status	Not Applicable	Data Filename	LX-nm-1MSMS.d
ACQ Method	LX-NM-1-MSMS.m	Comment		Acquired Time	6/9/2020 4:57:54 PM (UTC+08:00)



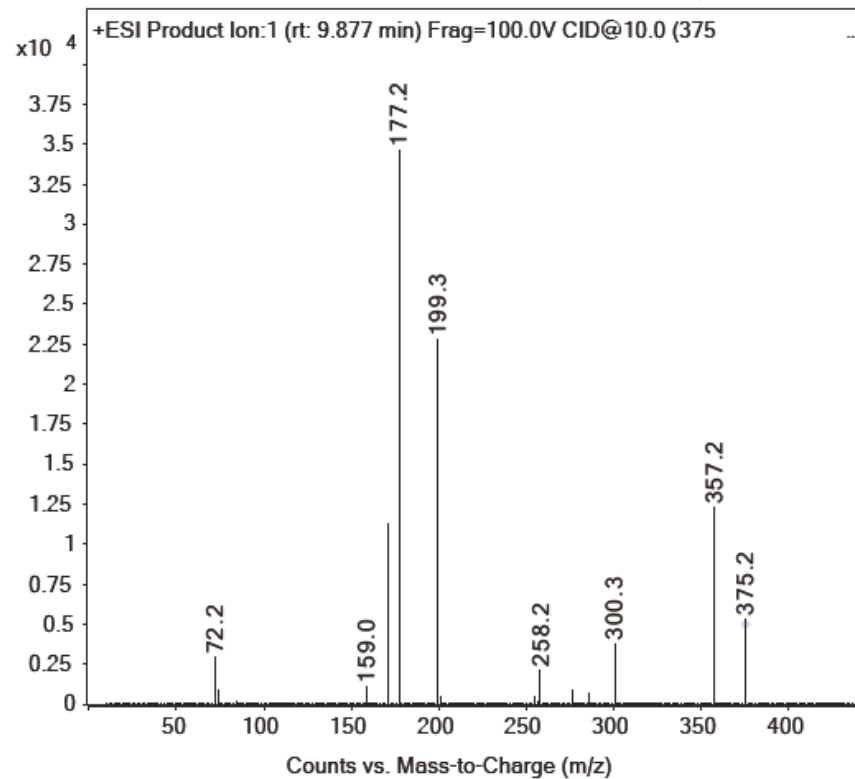
3. S3 MS/MS spectrum of AQ

Sample Name	LX-nm-1-MSMS	Position	P1-A1	Instrument Name	Instrument 1
User Name	YU JIA	Inj Vol	10	InjPosition	
Sample Type	Sample	IRM Calibration Status	Not Applicable	Data Filename	LX-nm-1MSMS.d
ACQ Method	LX-NM-1-MSMS.m	Comment		Acquired Time	6/9/2020 4:57:54 PM (UTC+08:00)



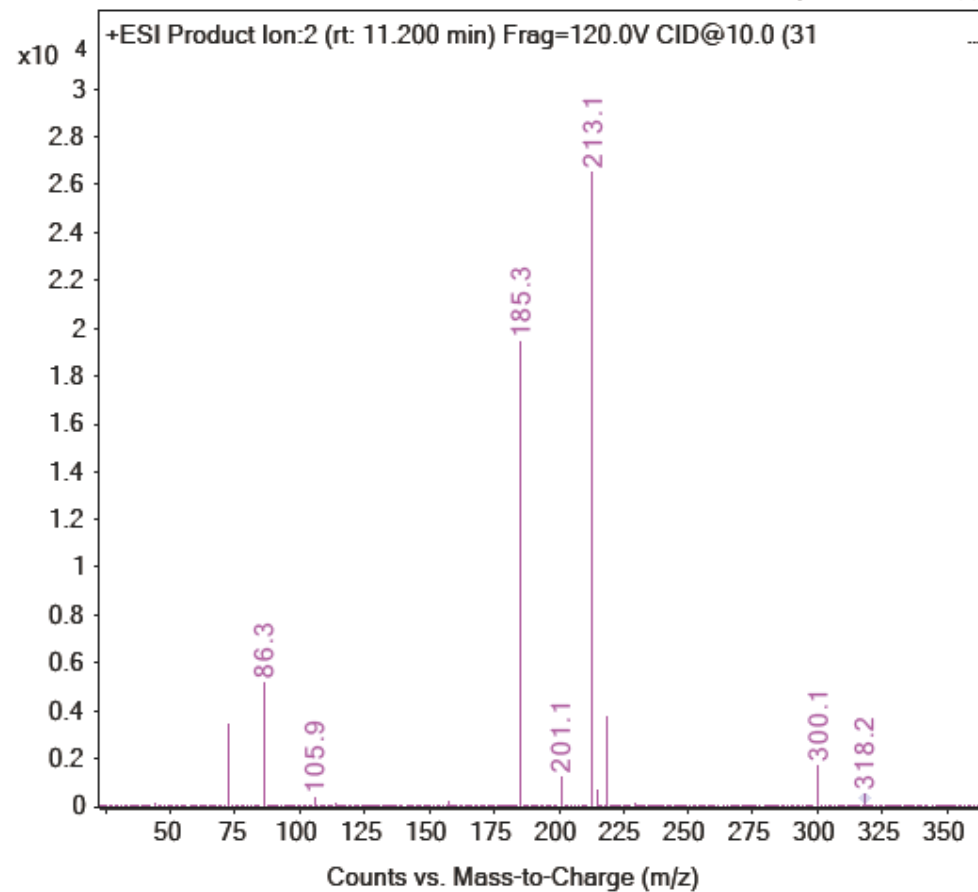
4. S4 MS/MS spectrum of VVSA

Sample Name	LX-nm-2R-MSMS	Position	P1-A3	Instrument Name	Instrument 1
User Name	YU JIA	Inj Vol	10	InjPosition	
Sample Type	Sample	IRM Calibration Status	Not Applicable	Data Filename	LX-nm-2R-MSMS.d
ACQ Method	LX-NM-2-MSMS.m	Comment		Acquired Time	6/5/2020 9:44:27 PM (UTC+08:00)



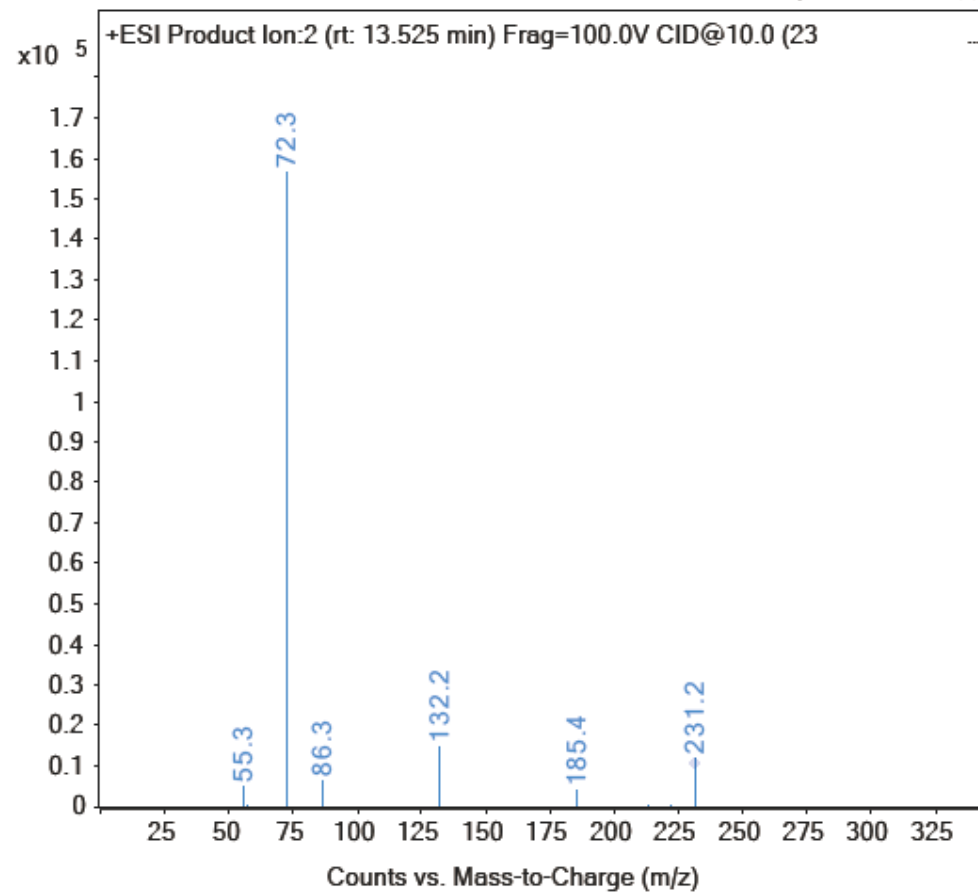
5. S5 MS/MS spectrum of V L(I)S

Sample Name	LX-nm-2R-MSMS	Position	P1-A3	Instrument Name	Instrument 1
User Name	YU JIA	Inj Vol	10	InjPosition	
Sample Type	Sample	IRM Calibration Status	Not Applicable	Data Filename	LX-nm-2R-MSMS.d
ACQ Method	LX-NM-2-MSMS.m	Comment		Acquired Time	6/5/2020 9:44:27 PM (UTC+08:00)



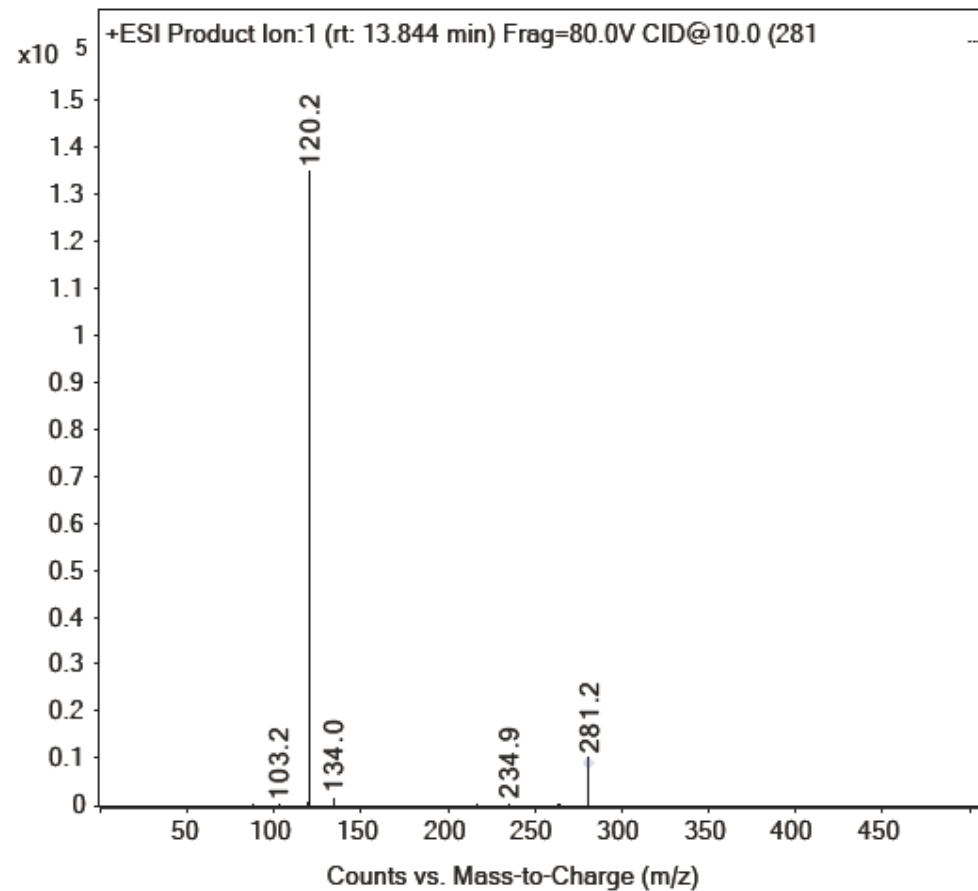
6. S6 MS/MS spectrum of V L(I)

Sample Name	LX-nm-2R-MSMS	Position	P1-A3	Instrument Name	Instrument 1
User Name	YU JIA	Inj Vol	10	InjPosition	
Sample Type	Sample	IRM Calibration Status	Not Applicable	Data Filename	LX-nm-2R-MSMS.d
ACQ Method	LX-NM-2-MSMS.m	Comment		Acquired Time	6/5/2020 9:44:27 PM (UTC+08:00)



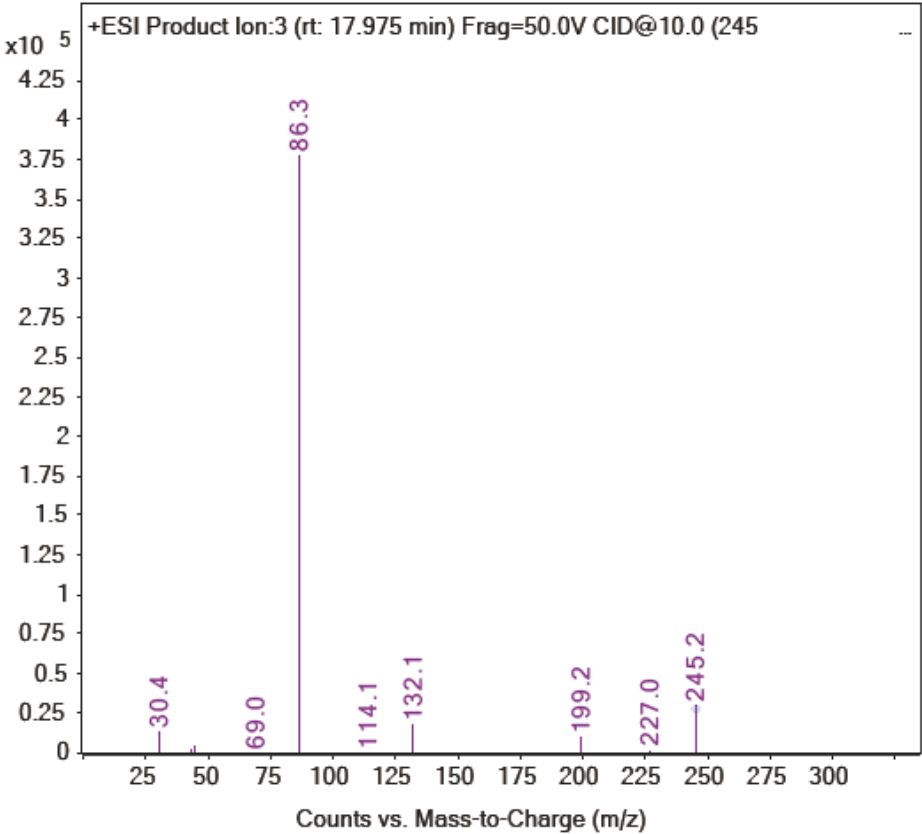
7. S7 MS/MS spectrum of FD

Sample Name	LX-nm-2R-MSMS	Position	P1-A3	Instrument Name	Instrument 1
User Name	YU JIA	Inj Vol	10	InjPosition	
Sample Type	Sample	IRM Calibration Status	Not Applicable	Data Filename	LX-nm-2R-MSMS.d
ACQ Method	LX-NM-2-MSMS.m	Comment		Acquired Time	6/5/2020 9:44:27 PM (UTC+08:00)



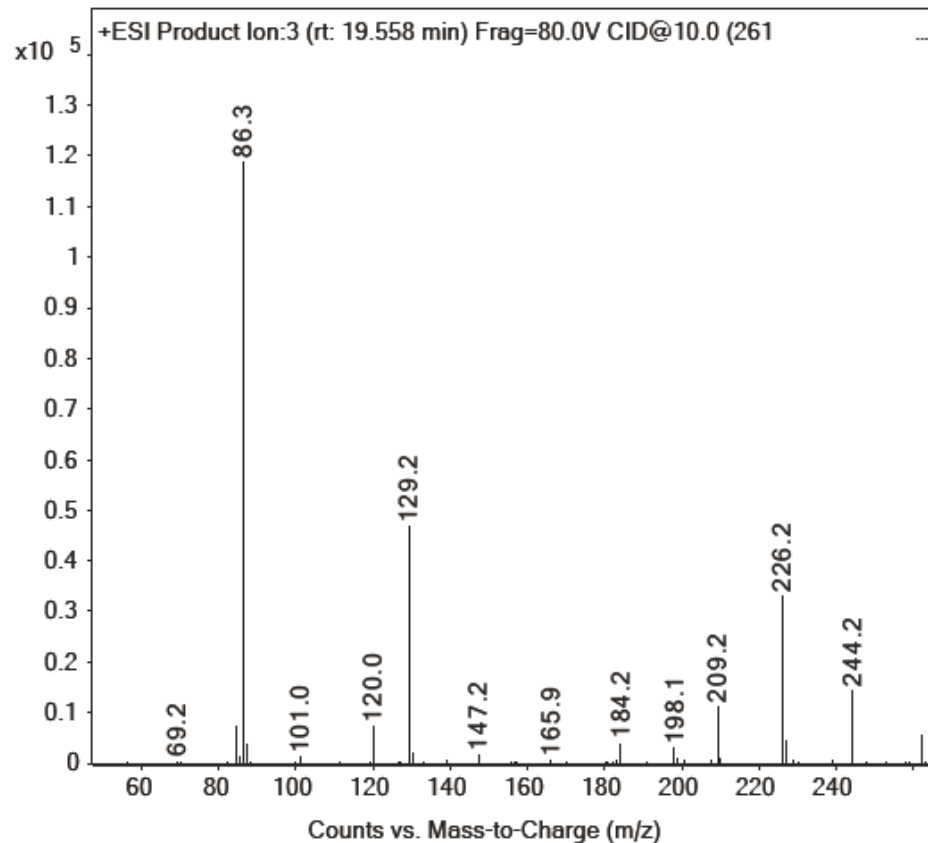
8. S8 MS/MS spectrum of L(I)L(I)

Sample Name	LX-nm-4-MSMS-R	Position	P1-A2	Instrument Name	Instrument 1
User Name	YU JIA	Inj Vol	10	InjPosition	
Sample Type	Sample	IRM Calibration Status	Not Applicable	Data Filename	LX-nm-4-MSMS-R.d
ACQ Method	LX-NM-4-MSMS-1.m	Comment		Acquired Time	6/10/2020 4:36:11 PM (UTC+08:00)



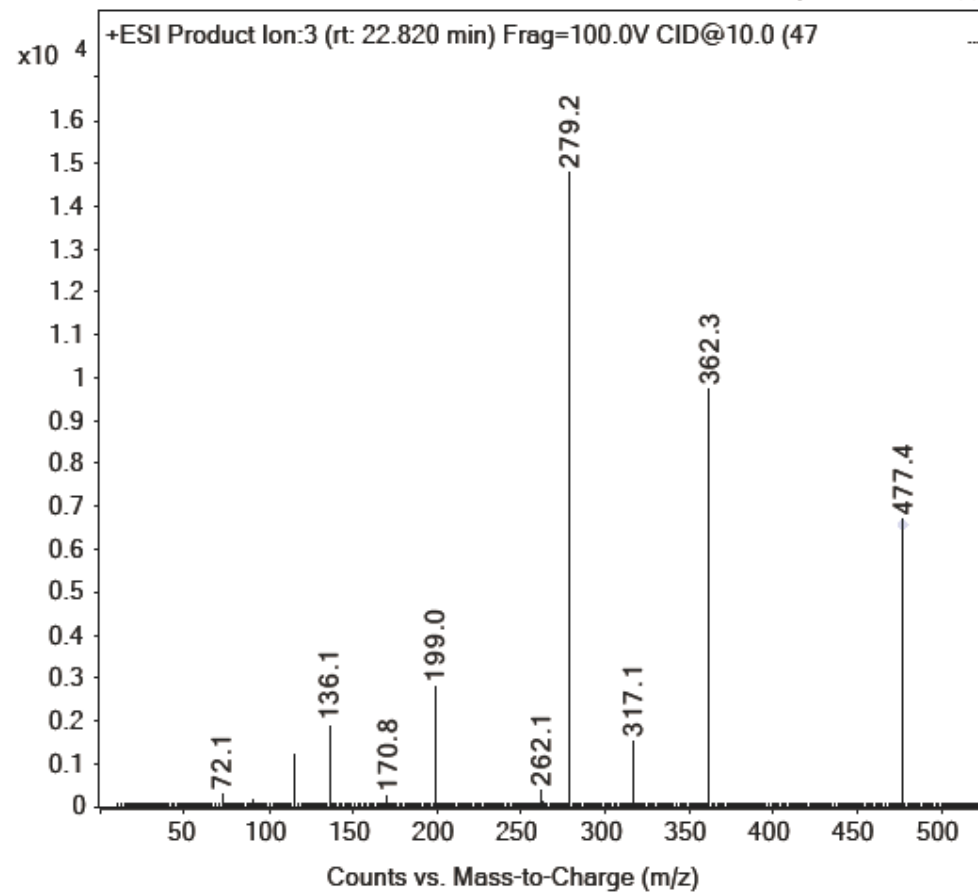
9. S9 MS/MS spectrum of DQ

Sample Name	LX-nm-4R-MSMS	Position	P1-A4	Instrument Name	Instrument 1
User Name	YU JIA	Inj Vol	10	InjPosition	
Sample Type	Sample	IRM Calibration Status	Not Applicable	Data Filename	LX-nm-4R-MSMS.d
ACQ Method	LX-NM-4-MSMS.m	Comment		Acquired Time	6/5/2020 10:32:30 PM (UTC+08:00)



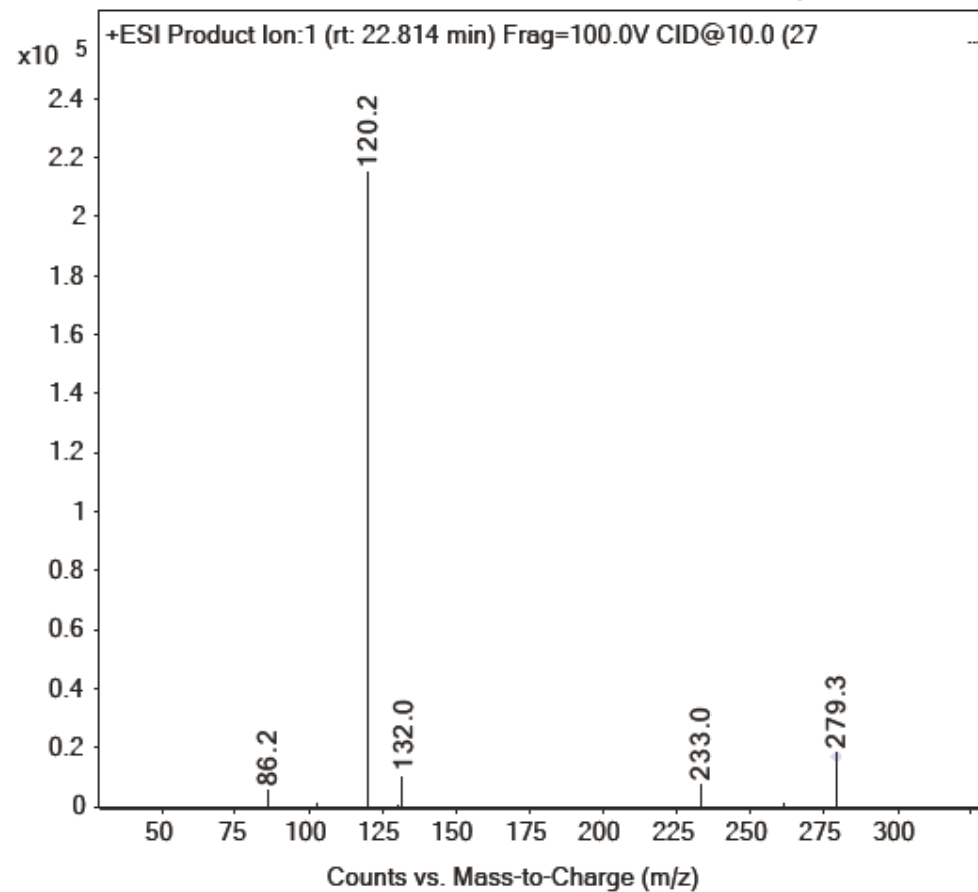
10. S10 MS/MS spectrum of VVYP

Sample Name	LX-nm-4R-MSMS	Position	P1-A4	Instrument Name	Instrument 1
User Name	YU JIA	Inj Vol	10	InjPosition	
Sample Type	Sample	IRM Calibration Status	Not Applicable	Data Filename	LX-nm-4R-MSMS.d
ACQ Method	LX-NM-4-MSMS.m	Comment		Acquired Time	6/5/2020 10:32:30 PM (UTC+08:00)



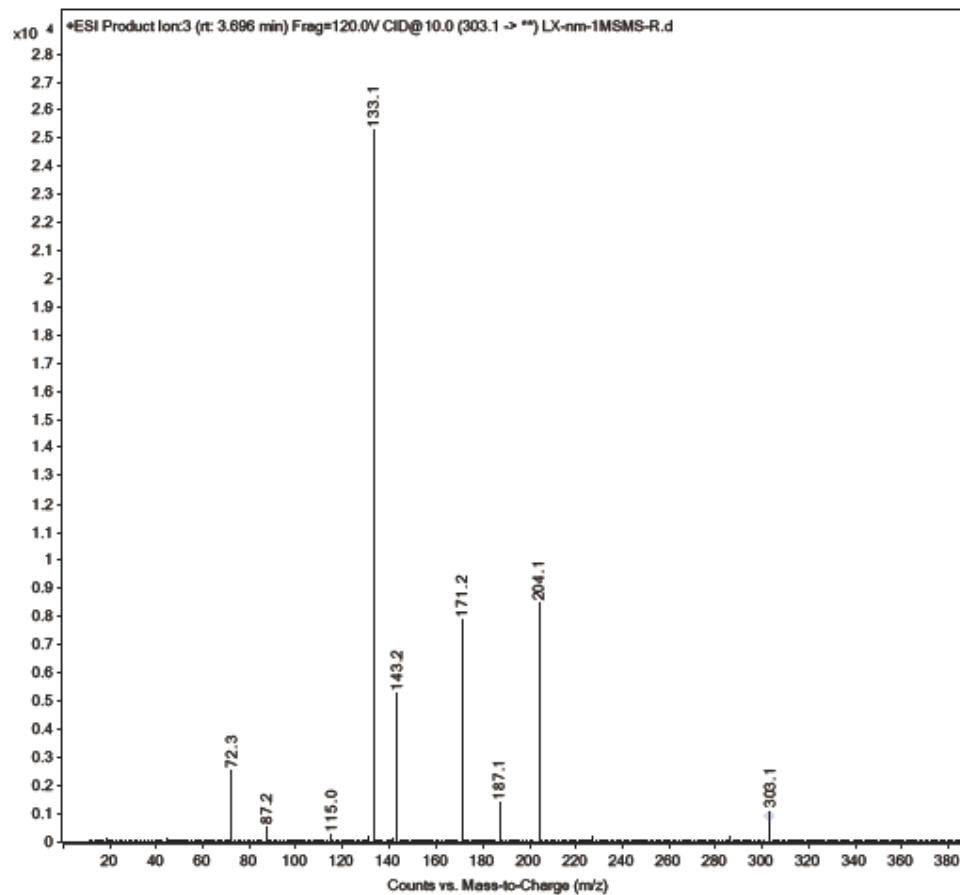
11. S11 MS/MS spectrum of FL(I)

Sample Name	LX-nm-4R-MSMS	Position	P1-A4	Instrument Name	Instrument 1
User Name	YU JIA	Inj Vol	10	InjPosition	
Sample Type	Sample	IRM Calibration Status	Not Applicable	Data Filename	LX-nm-4R-MSMS.d
ACQ Method	LX-NM-4-MSMS.m	Comment		Acquired Time	6/5/2020 10:32:30 PM (UTC+08:00)



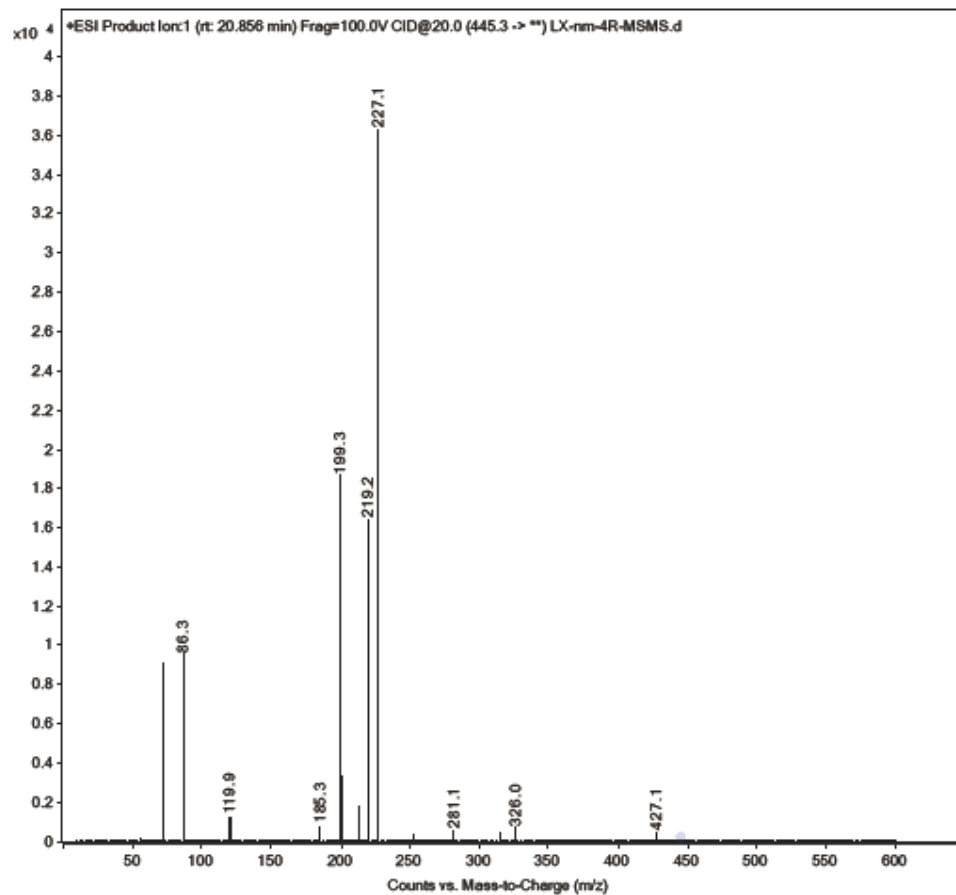
12. S12 MS/MS spectrum of VAN

Sample Name	LX-nm-1-MSMS-R	Position	P1-A1	Instrument Name	Instrument 1
User Name	YU JIA	Inj Vol	10	InjPosition	
Sample Type	Sample	IRM Calibration Status	Not Applicable	Data Filename	LX-nm-1MSMS-R.d
ACQ Method	LX-NM-1-MSMS.m	Comment		Acquired Time	6/9/2020 5:59:51 PM (UTC+08:00)



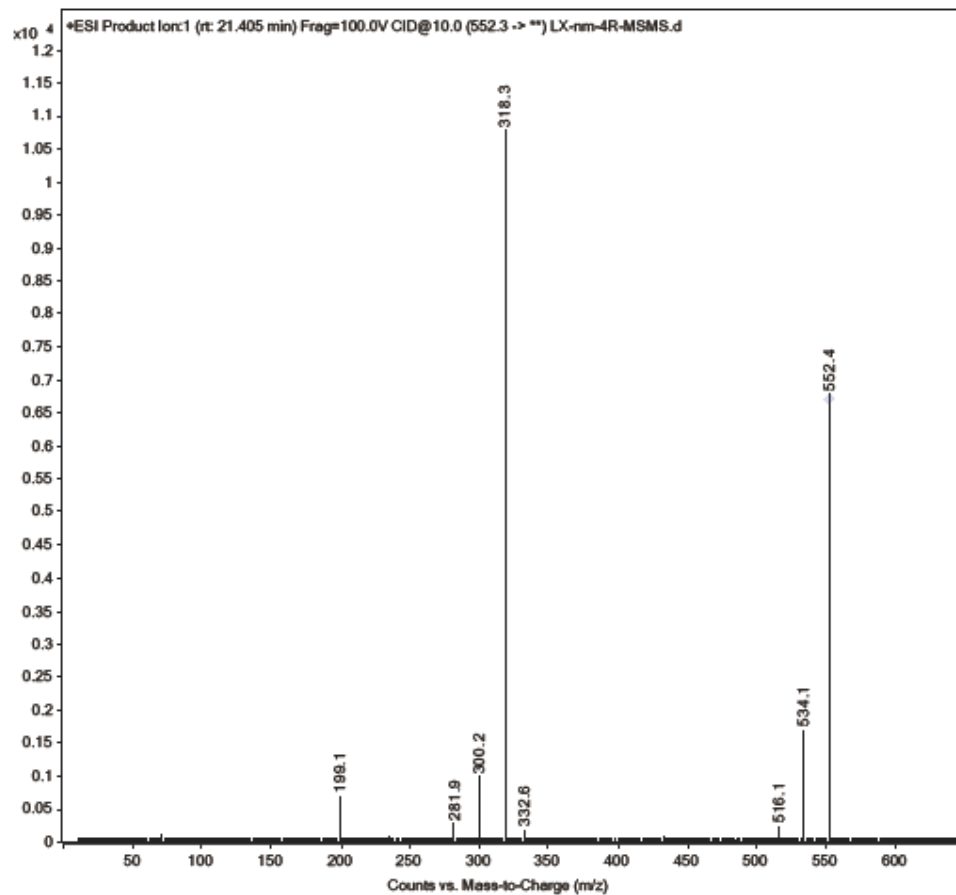
13. S13 MS/MS spectrum of L(I)L(I)VT

Sample Name	LX-nm-4R-MSMS	Position	P1-A4	Instrument Name	Instrument 1
User Name	YU JIA	Inj Vol	10	InjPosition	
Sample Type	Sample	IRM Calibration Status	Not Applicable	Data Filename	LX-nm-4R-MSMS.d
ACQ Method	LX-NM-4-MSMS.m	Comment		Acquired Time	6/5/2020 10:32:30 PM (UTC+08:00)



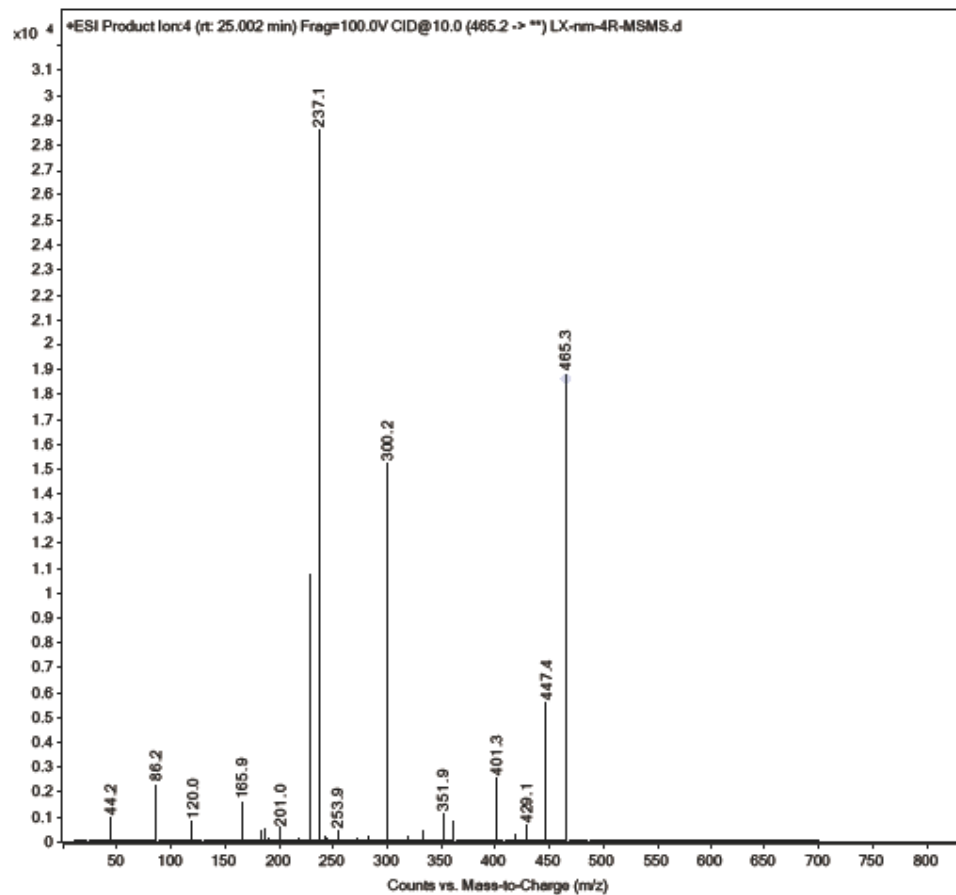
14. S14 MS/MS spectrum of PHPTT

Sample Name	LX-nm-4R-MSMS	Position	P1-A4	Instrument Name	Instrument 1
User Name	YU JIA	Inj Vol	10	InjPosition	
Sample Type	Sample	IRM Calibration Status	Not Applicable	Data Filename	LX-nm-4R-MSMS.d
ACQ Method	LX-NM-4-MSMS.m	Comment		Acquired Time	6/5/2020 10:32:30 PM (UTC+08:00)



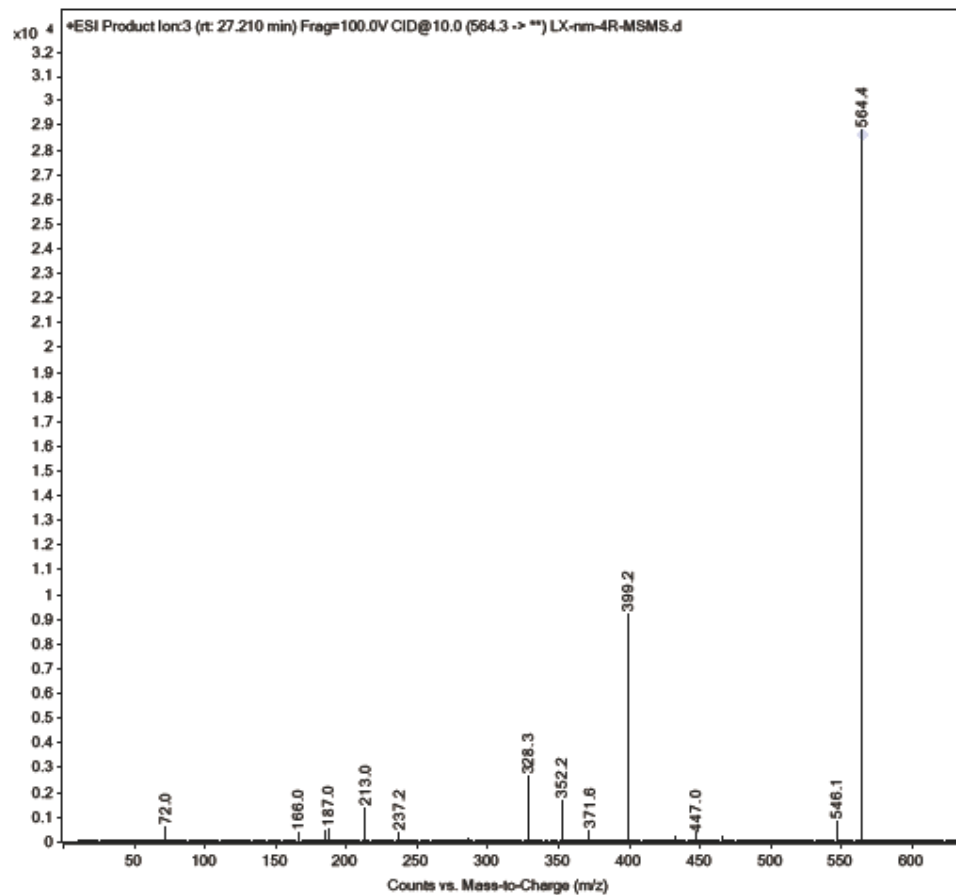
15. S15 MS/MS spectrum of EVAF

Sample Name	LX-nm-4R-MSMS	Position	P1-A4	Instrument Name	Instrument 1
User Name	YU JIA	Inj Vol	10	InjPosition	
Sample Type	Sample	IRM Calibration Status	Not Applicable	Data Filename	LX-nm-4R-MSMS.d
ACQ Method	LX-NM-4-MSMS.m	Comment		Acquired Time	6/5/2020 10:32:30 PM (UTC+08:00)



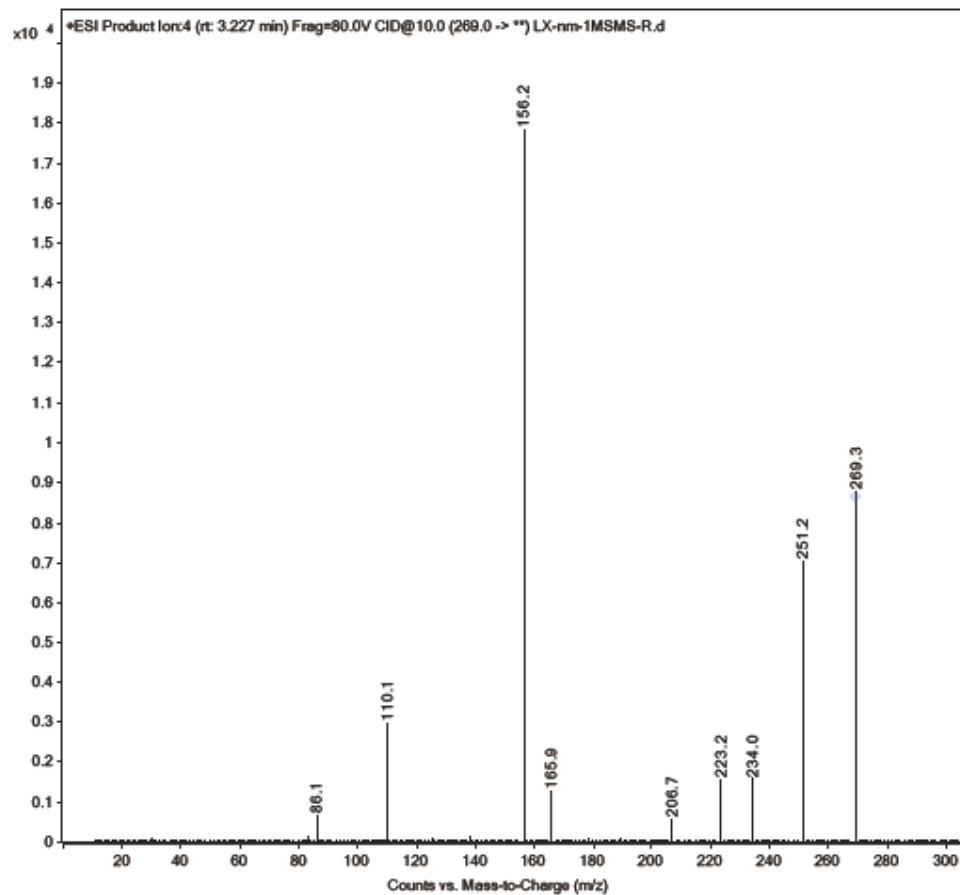
16. S16 MS/MS spectrum of VL(I)DAF

Sample Name	LX-nm-4R-MSMS	Position	P1-A4	Instrument Name	Instrument 1
User Name	YU JIA	Inj Vol	10	InjPosition	
Sample Type	Sample	IRM Calibration Status	Not Applicable	Data Filename	LX-nm-4R-MSMS.d
ACQ Method	LX-NM-4-MSMS.m	Comment		Acquired Time	6/5/2020 10:32:30 PM (UTC+08:00)



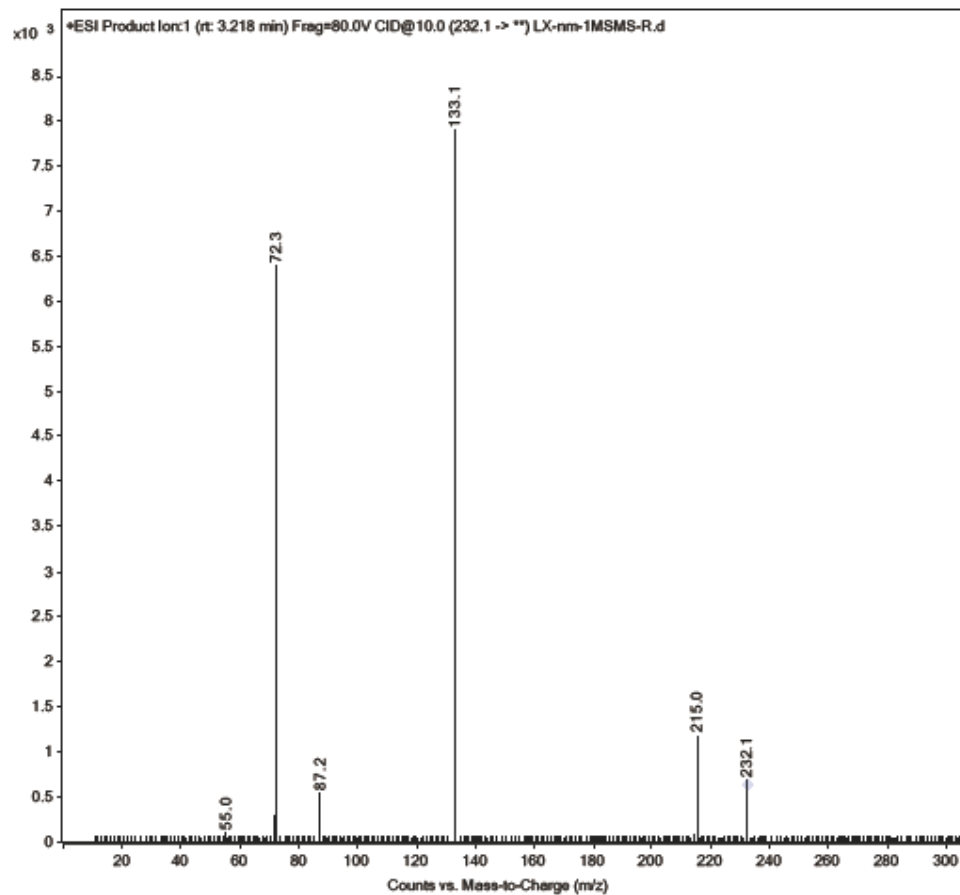
17. S17 MS/MS spectrum of L(I)H

Sample Name	LX-nm-1-MSMS-R	Position	P1-A1	Instrument Name	Instrument 1
User Name	YU JIA	Inj Vol	10	InjPosition	
Sample Type	Sample	IRM Calibration Status	Not Applicable	Data Filename	LX-nm-1MSMS-R.d
ACQ Method	LX-NM-1-MSMS.m	Comment		Acquired Time	6/9/2020 5:59:51 PM (UTC+08:00)



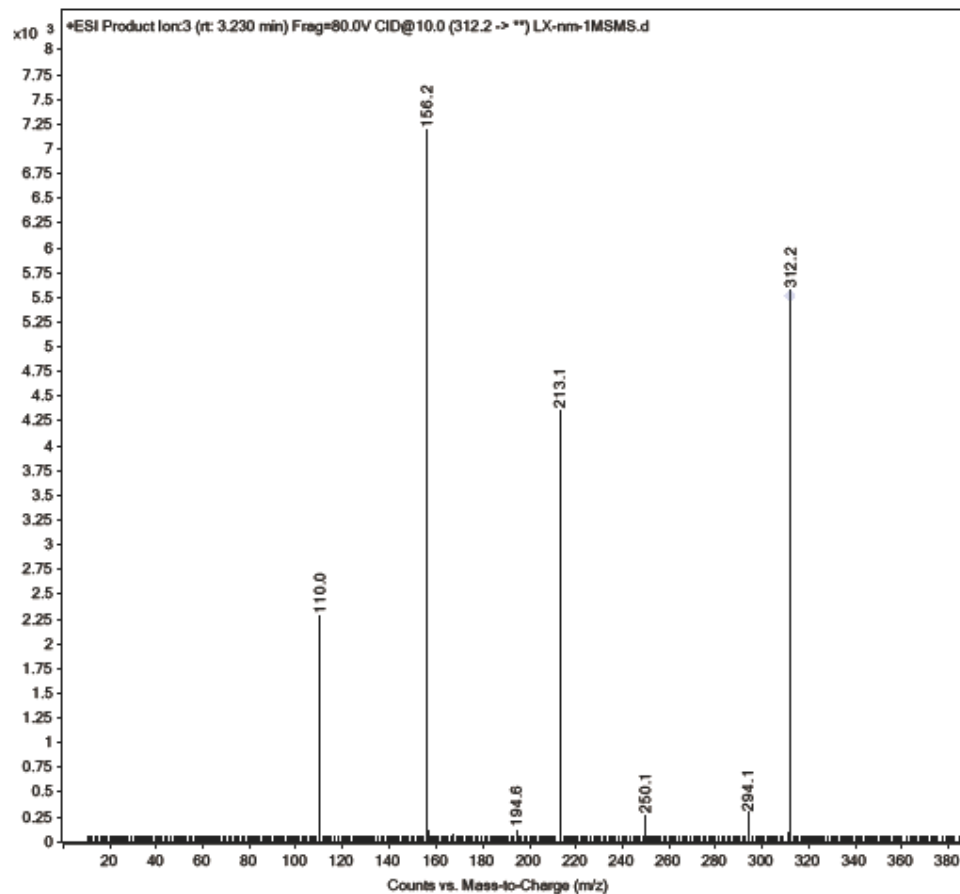
18. S18 MS/MS spectrum of VN

Sample Name	LX-nm-1-MSMS-R	Position	P1-A1	Instrument Name	Instrument 1
User Name	YU JIA	Inj Vol	10	InjPosition	
Sample Type	Sample	IRM Calibration Status	Not Applicable	Data Filename	LX-nm-1MSMS-R.d
ACQ Method	LX-NM-1-MSMS.m	Comment		Acquired Time	6/9/2020 5:59:51 PM (UTC+08:00)



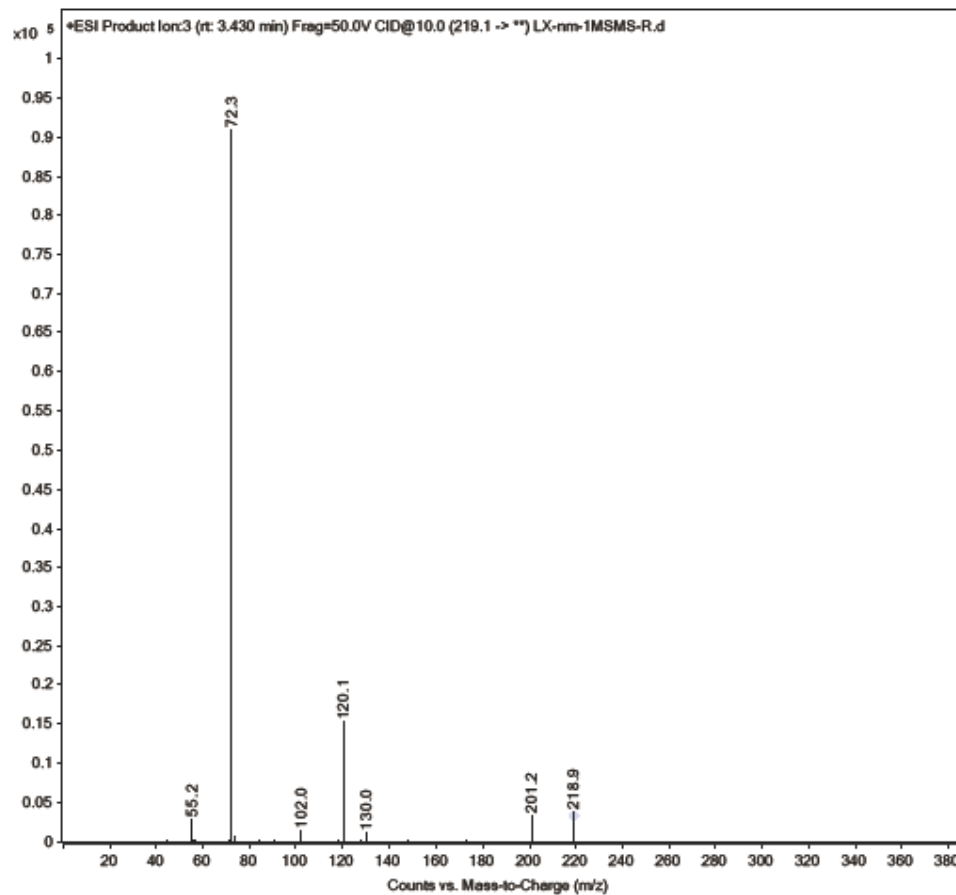
19. S19 MS/MS spectrum of VGH

Sample Name	LX-nm-1-MSMS	Position	P1-A1	Instrument Name	Instrument 1
User Name	YU JIA	Inj Vol	10	InjPosition	
Sample Type	Sample	IRM Calibration Status	Not Applicable	Data Filename	LX-nm-1MSMS.d
ACQ Method	LX-NM-1-MSMS.m	Comment		Acquired Time	6/9/2020 4:57:54 PM (UTC+08:00)



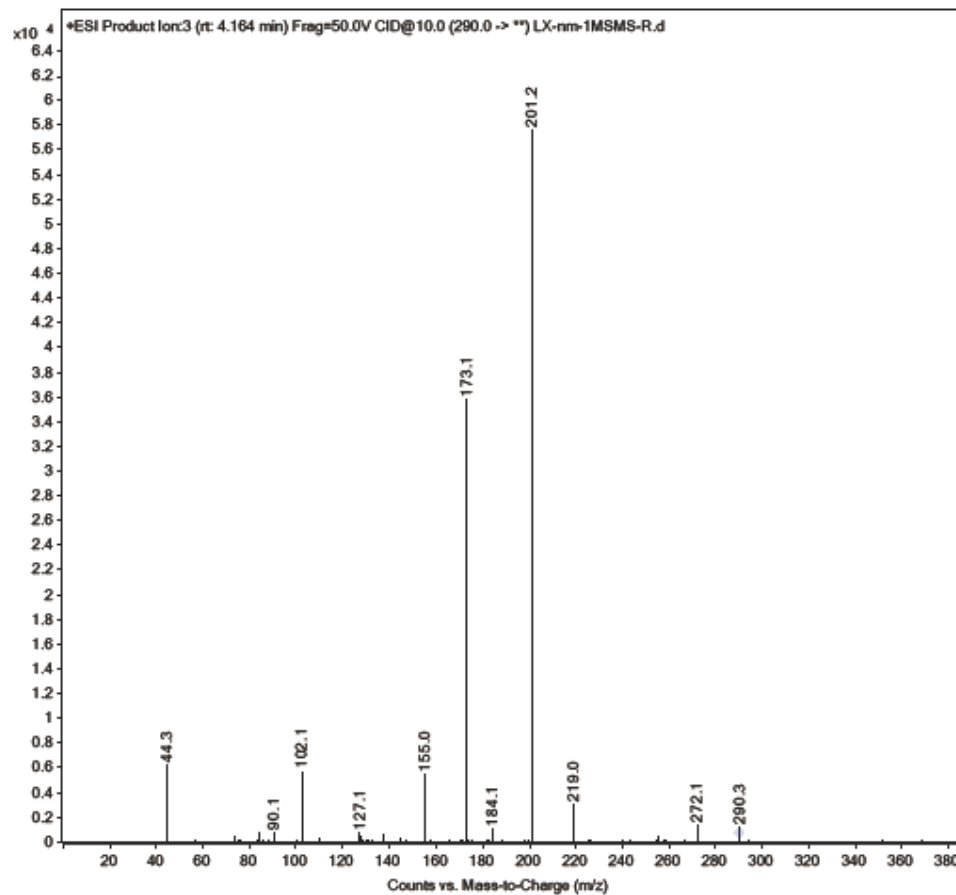
20. S20 MS/MS spectrum of VT

Sample Name	LX-nm-1-MSMS-R	Position	P1-A1	Instrument Name	Instrument 1
User Name	YU JIA	Inj Vol	10	InjPosition	
Sample Type	Sample	IRM Calibration Status	Not Applicable	Data Filename	LX-nm-1MSMS-R.d
ACQ Method	LX-NM-1-MSMS.m	Comment		Acquired Time	6/9/2020 5:59:51 PM (UTC+08:00)



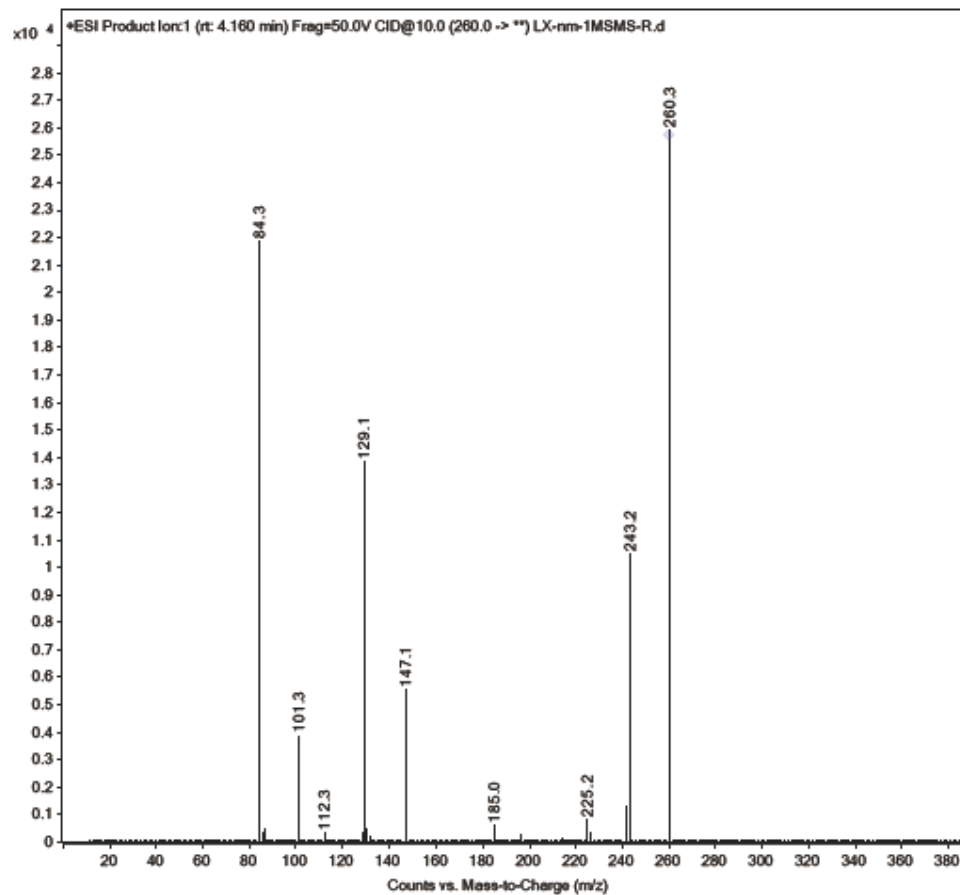
21. S21 MS/MS spectrum of TVA

Sample Name	LX-nm-1-MSMS-R	Position	P1-A1	Instrument Name	Instrument 1
User Name	YU JIA	Inj Vol	10	InjPosition	
Sample Type	Sample	IRM Calibration Status	Not Applicable	Data Filename	LX-nm-1MSMS-R.d
ACQ Method	LX-NM-1-MSMS.m	Comment		Acquired Time	6/9/2020 5:59:51 PM (UTC+08:00)



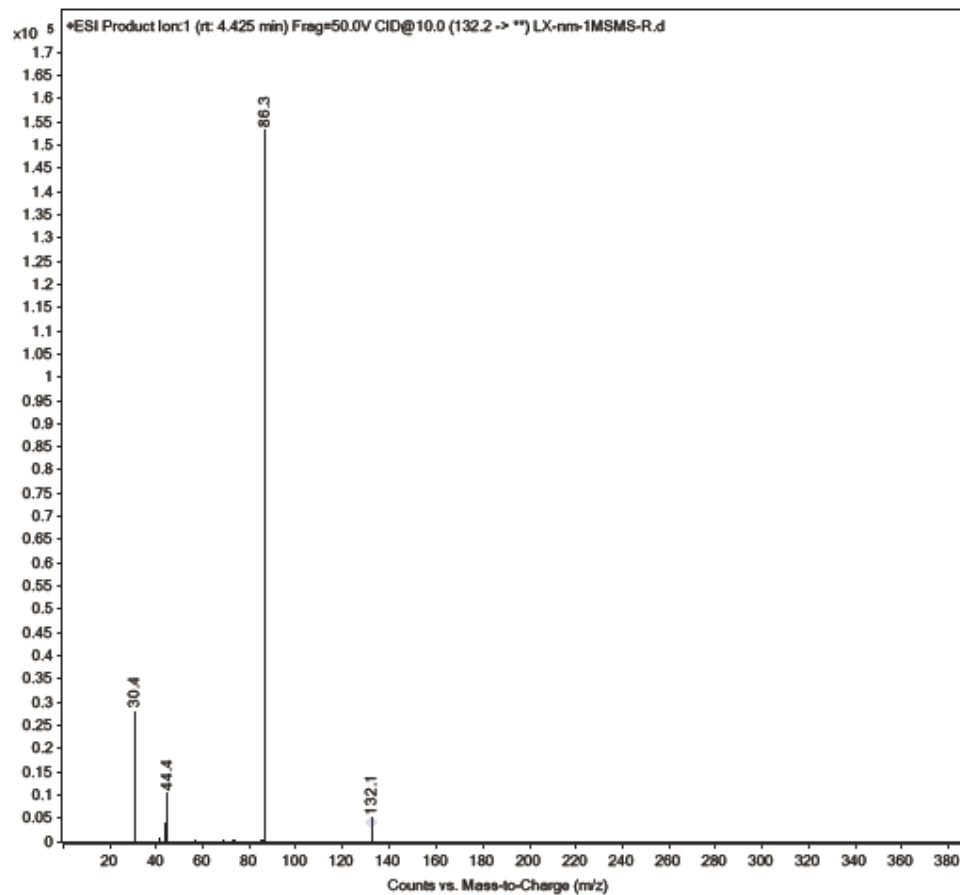
22. S22 MS/MS spectrum of L(I)Q

Sample Name	LX-nm-1-MSMS-R	Position	P1-A1	Instrument Name	Instrument 1
User Name	YU JIA	Inj Vol	10	InjPosition	
Sample Type	Sample	IRM Calibration Status	Not Applicable	Data Filename	LX-nm-1MSMS-R.d
ACQ Method	LX-NM-1-MSMS.m	Comment		Acquired Time	6/9/2020 5:59:51 PM (UTC+08:00)



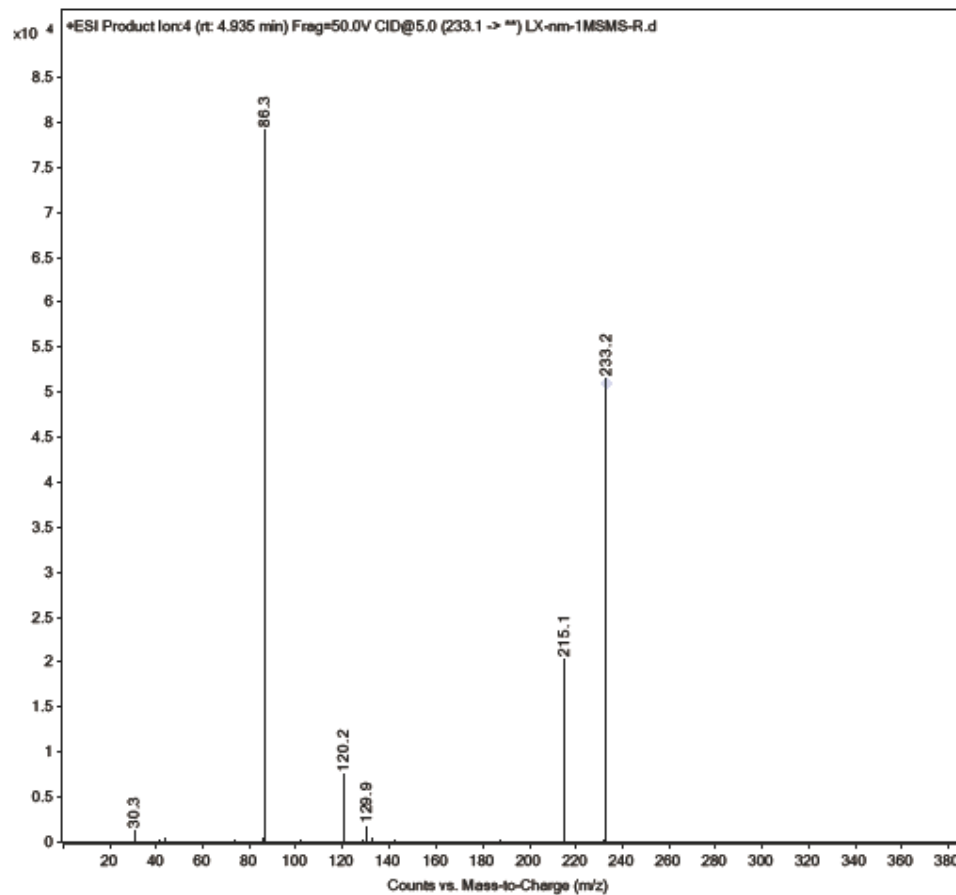
23. S23 MS/MS spectrum of L(I)

Sample Name	LX-nm-1-MSMS-R	Position	P1-A1	Instrument Name	Instrument 1
User Name	YU JIA	Inj Vol	10	InjPosition	
Sample Type	Sample	IRM Calibration Status	Not Applicable	Data Filename	LX-nm-1MSMS-R.d
ACQ Method	LX-NM-1-MSMS.m	Comment		Acquired Time	6/9/2020 5:59:51 PM (UTC+08:00)



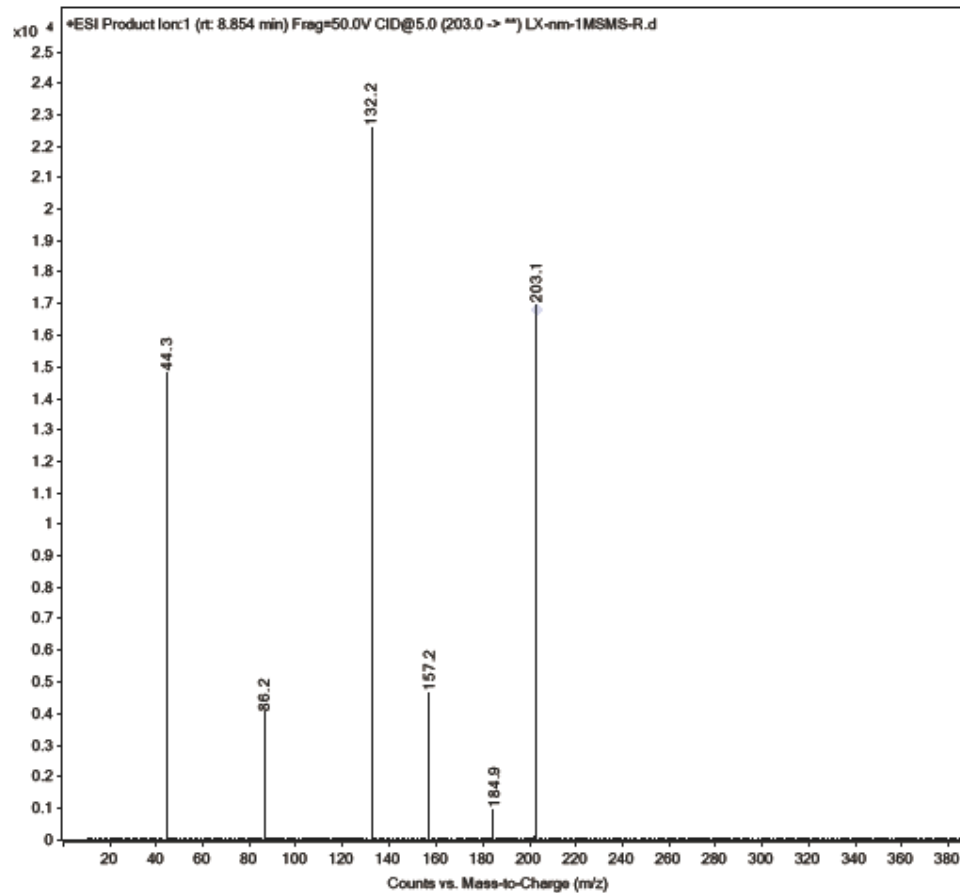
24. S24 MS/MS spectrum of L(I)T

Sample Name	LX-nm-1-MSMS-R	Position	P1-A1	Instrument Name	Instrument 1
User Name	YU JIA	Inj Vol	10	InjPosition	
Sample Type	Sample	IRM Calibration Status	Not Applicable	Data Filename	LX-nm-1MSMS-R.d
ACQ Method	LX-NM-1-MSMS.m	Comment		Acquired Time	6/9/2020 5:59:51 PM (UTC+08:00)



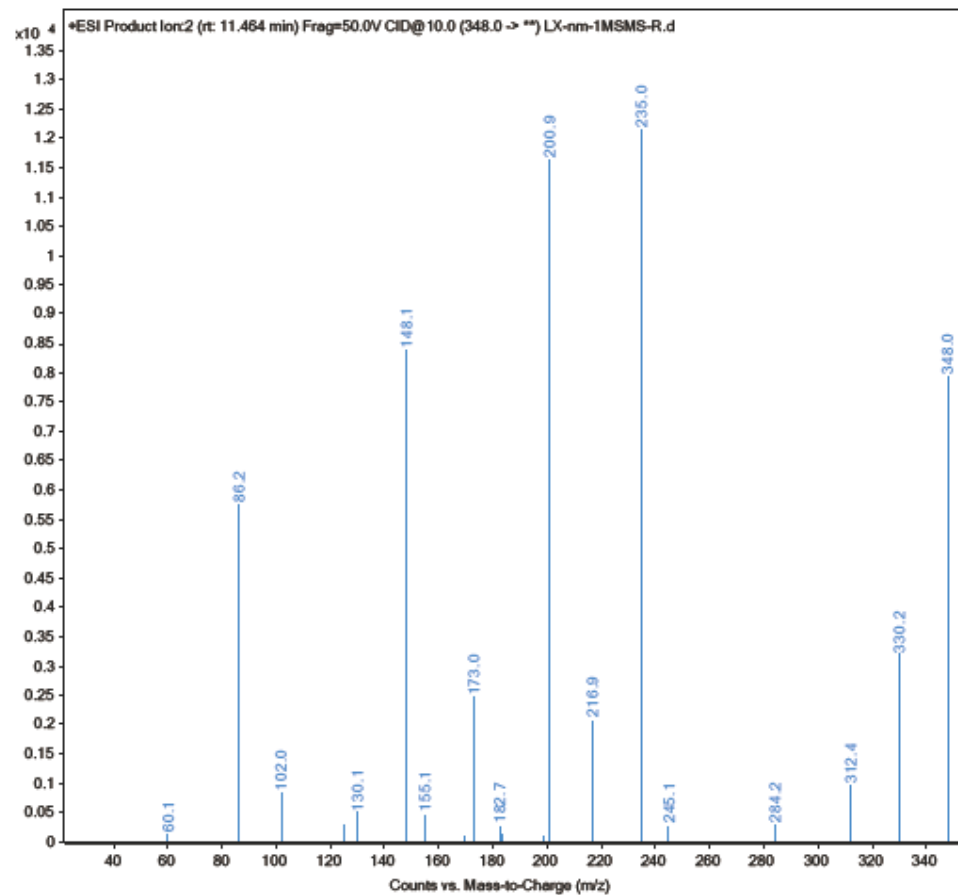
25. S25 MS/MS spectrum of AL(I)

Sample Name	LX-nm-1-MSMS-R	Position	P1-A1	Instrument Name	Instrument 1
User Name	YU JIA	Inj Vol	10	InjPosition	
Sample Type	Sample	IRM Calibration Status	Not Applicable	Data Filename	LX-nm-1MSMS-R.d
ACQ Method	LX-NM-1-MSMS.m	Comment		Acquired Time	6/9/2020 5:59:51 PM (UTC+08:00)



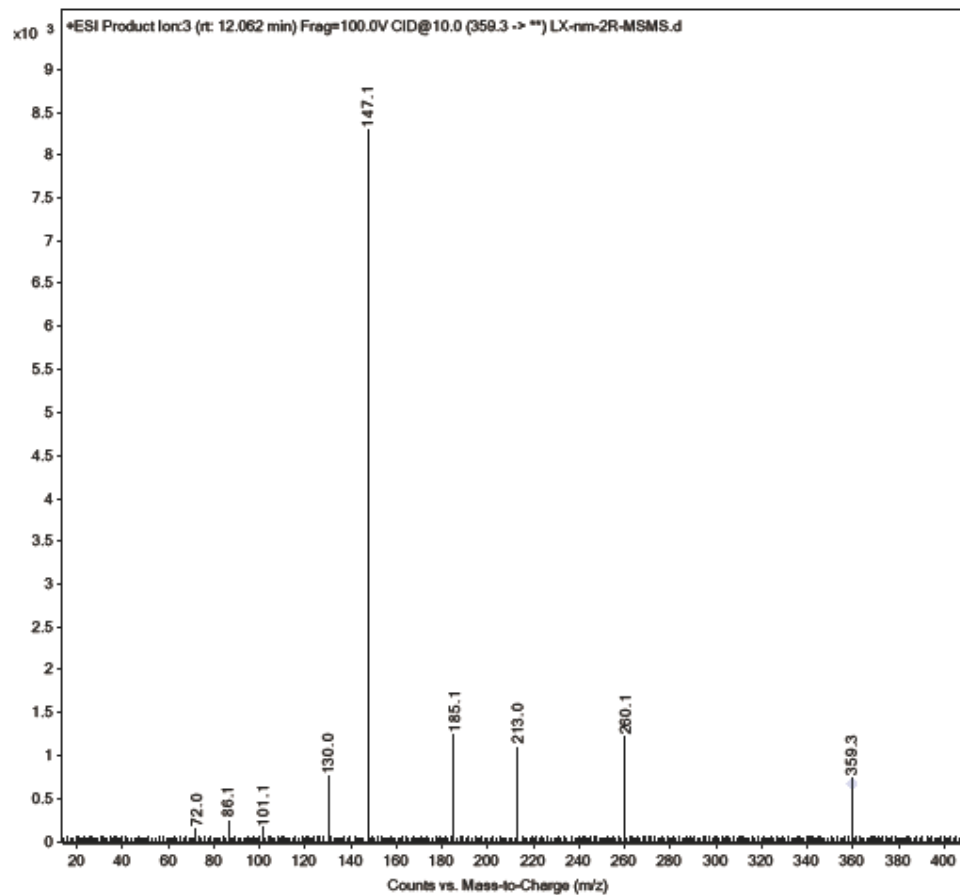
26. S26 MS/MS spectrum of L(I)SE

Sample Name	LX-nm-1-MSMS-R	Position	P1-A1	Instrument Name	Instrument 1
User Name	YU JIA	Inj Vol	10	InjPosition	
Sample Type	Sample	IRM Calibration Status	Not Applicable	Data Filename	LX-nm-1MSMS-R.d
ACQ Method	LX-NM-1-MSMS.m	Comment		Acquired Time	6/9/2020 5:59:51 PM (UTC+08:00)



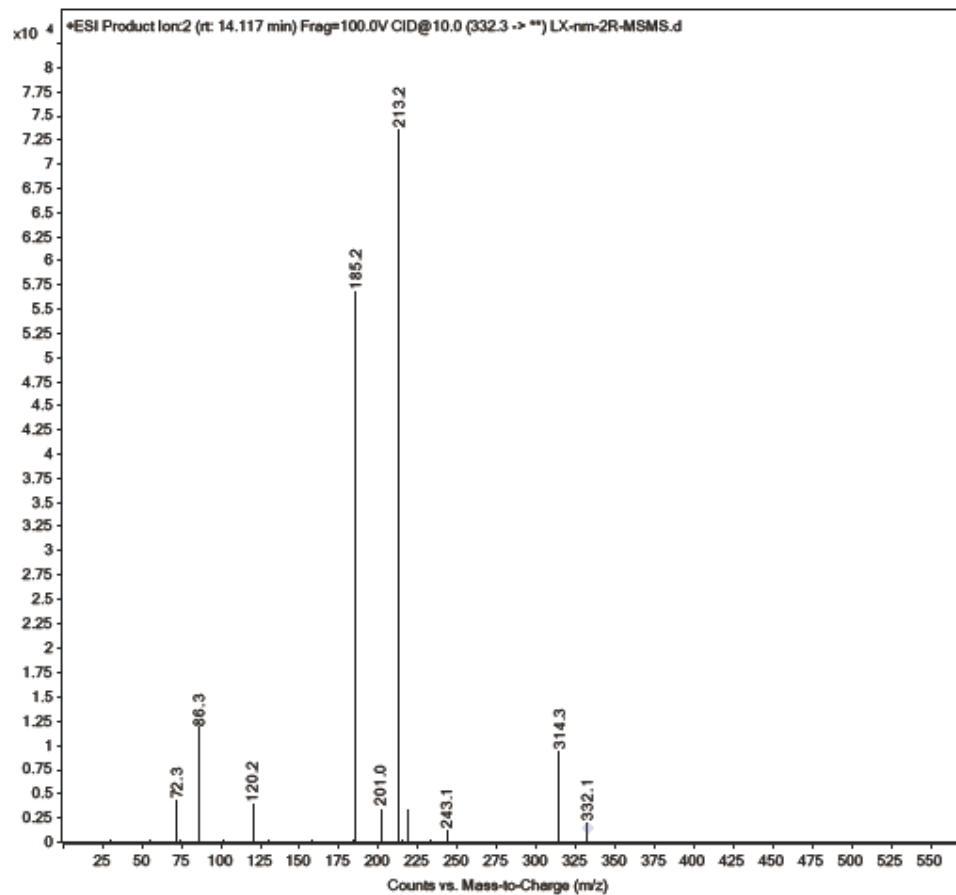
27. S27 MS/MS spectrum of VL(I)K

Sample Name	LX-nm-2R-MSMS	Position	P1-A3	Instrument Name	Instrument 1
User Name	YU JIA	Inj Vol	10	InjPosition	
Sample Type	Sample	IRM Calibration Status	Not Applicable	Data Filename	LX-nm-2R-MSMS.d
ACQ Method	LX-NM-2-MSMS.m	Comment		Acquired Time	6/5/2020 9:44:27 PM (UTC+08:00)



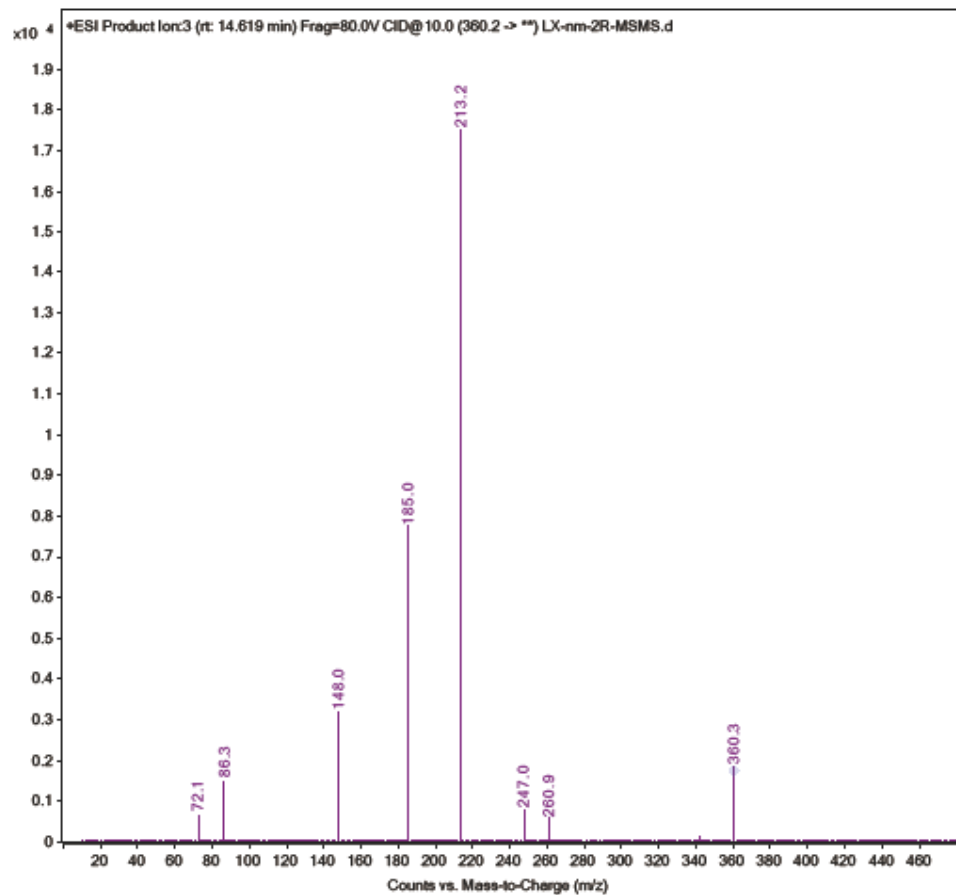
28. S28MS/MS spectrum of L(I)VT

Sample Name	LX-nm-2R-MSMS	Position	P1-A3	Instrument Name	Instrument 1
User Name	YU JIA	Inj Vol	10	InjPosition	
Sample Type	Sample	IRM Calibration Status	Not Applicable	Data Filename	LX-nm-2R-MSMS.d
ACQ Method	LX-NM-2-MSMS.m	Comment		Acquired Time	6/5/2020 9:44:27 PM (UTC+08:00)



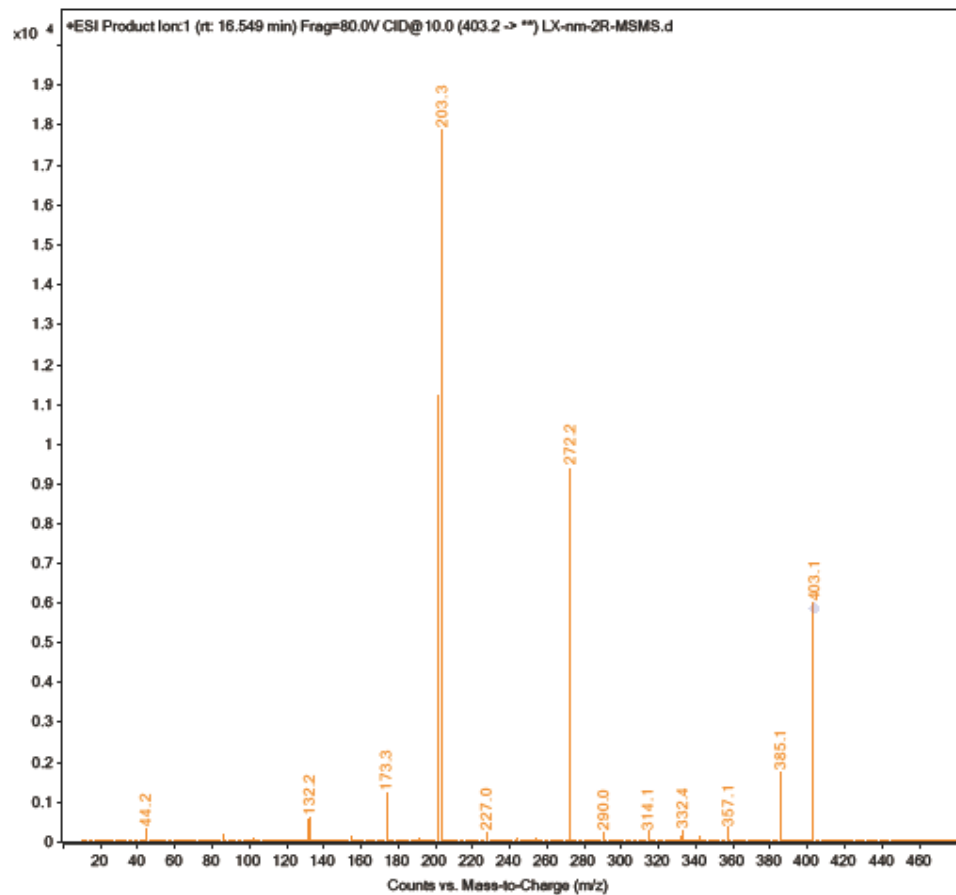
29. S29 MS/MS spectrum of L(I)VE

Sample Name	LX-nm-2R-MSMS	Position	P1-A3	Instrument Name	Instrument 1
User Name	YU JIA	Inj Vol	10	InjPosition	
Sample Type	Sample	IRM Calibration Status	Not Applicable	Data Filename	LX-nm-2R-MSMS.d
ACQ Method	LX-NM-2-MSMS.m	Comment		Acquired Time	6/5/2020 9:44:27 PM (UTC+08:00)



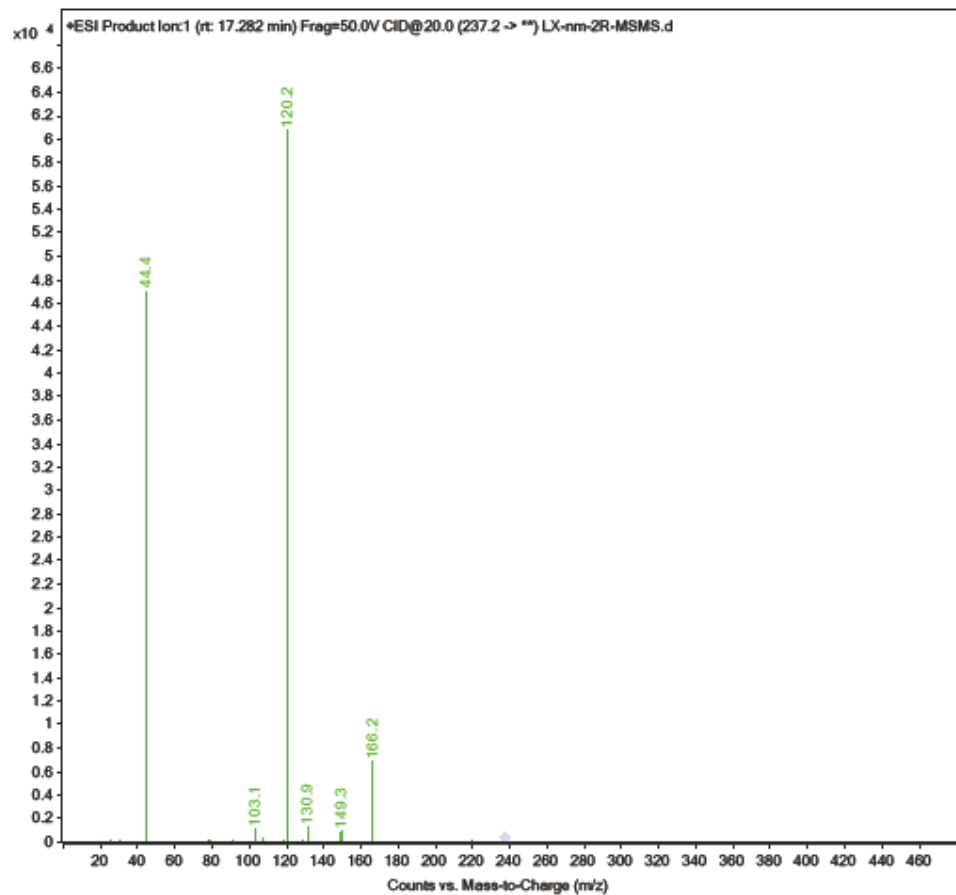
30. S30MS/MS spectrum of L(I)SAL(I)

Sample Name	LX-nm-2R-MSMS	Position	P1-A3	Instrument Name	Instrument 1
User Name	YU JIA	Inj Vol	10	InjPosition	
Sample Type	Sample	IRM Calibration Status	Not Applicable	Data Filename	LX-nm-2R-MSMS.d
ACQ Method	LX-NM-2-MSMS.m	Comment		Acquired Time	6/5/2020 9:44:27 PM (UTC+08:00)



31. S31 MS/MS spectrum of AF

Sample Name	LX-nm-2R-MSMS	Position	P1-A3	Instrument Name	Instrument 1
User Name	YU JIA	Inj Vol	10	InjPosition	
Sample Type	Sample	IRM Calibration Status	Not Applicable	Data Filename	LX-nm-2R-MSMS.d
ACQ Method	LX-NM-2-MSMS.m	Comment		Acquired Time	6/5/2020 9:44:27 PM (UTC+08:00)



32. S32 MS/MS spectrum of WT

Sample Name	LX-nm-4R-MSMS	Position	P1-A4	Instrument Name	Instrument 1
User Name	YU JIA	Inj Vol	10	InjPosition	
Sample Type	Sample	IRM Calibration Status	Not Applicable	Data Filename	LX-nm-4R-MSMS.d
ACQ Method	LX-NM-4-MSMS.m	Comment		Acquired Time	6/5/2020 10:32:30 PM (UTC+08:00)

