

Dihydrotanshinone I enhances cell adhesion and inhibits cell migration in osteosarcoma U-2 OS cell through CD44 and chemokine signaling

Lanyan Fan^{1,2}, Chen Peng², Xiaoping Zhu^{1,2}, Yawen Liang², Tianyi Xu², Peng Xu¹ and Shihua Wu^{1,2*}

¹ Joint Research Centre for Engineering Biology, Zhejiang University-University of Edinburgh Institute, Zhejiang University, Haining 314400, China

² Research Center of Siyuan Natural Pharmacy and Biototoxicology, College of Life Sciences, Zhejiang University, Hangzhou, Zhejiang Province 310058, China

* Correspondence: Drwushihua@zju.edu.cn, Shihuawu@intl.zju.edu.cn; Tel.: +86-13968131541

Legends for Supplementary figures

Figure S1. The chemical structures of major tanshinones isolated from *Salvia miltiorrhiza* rhizome.

Figure S2. The effects of DS-1 on HeLa cell adhesion on cell culture plates against trypsin digestion. (A) HeLa cells were seeded at 80000 per well in 6-well plates for 12 h, then treated with 0, 10.0, 15.0, 20.0 μ M DS-1 for 24 h. After that, cells were washed by PBS solution and digested by 400 μ L 0.25% trypsin. During the digestion, cellular morphology was recorded by inverted microscope with camera every 30 seconds. The digestion time was shown in Figure (B).

Figure S3. The effects of DS-1 on NRK-49F cell adhesion on cell culture plates against trypsin digestion. (A) NRK-49F cells were seeded at 80000 per well in 6-well plate for 12 h, then treated with 0, 6.25, 12.5 μ M DS-1 for 24 h. After that, cells were washed by PBS solution and digested by 400 μ L 0.25% trypsin. During the digestion, cellular morphology was recorded by inverted microscope every 30 seconds. The digestion time was shown in Figure (B).

Figure S4. CD44 knockdown by siRNA. (A) U-2 OS cells were cultured in the 6-well plate, then CD44 was knocked down by siRNA for 24 h and 36 h. The relative expression of CD44 was detected by Western Blot and shown in Figure (B).

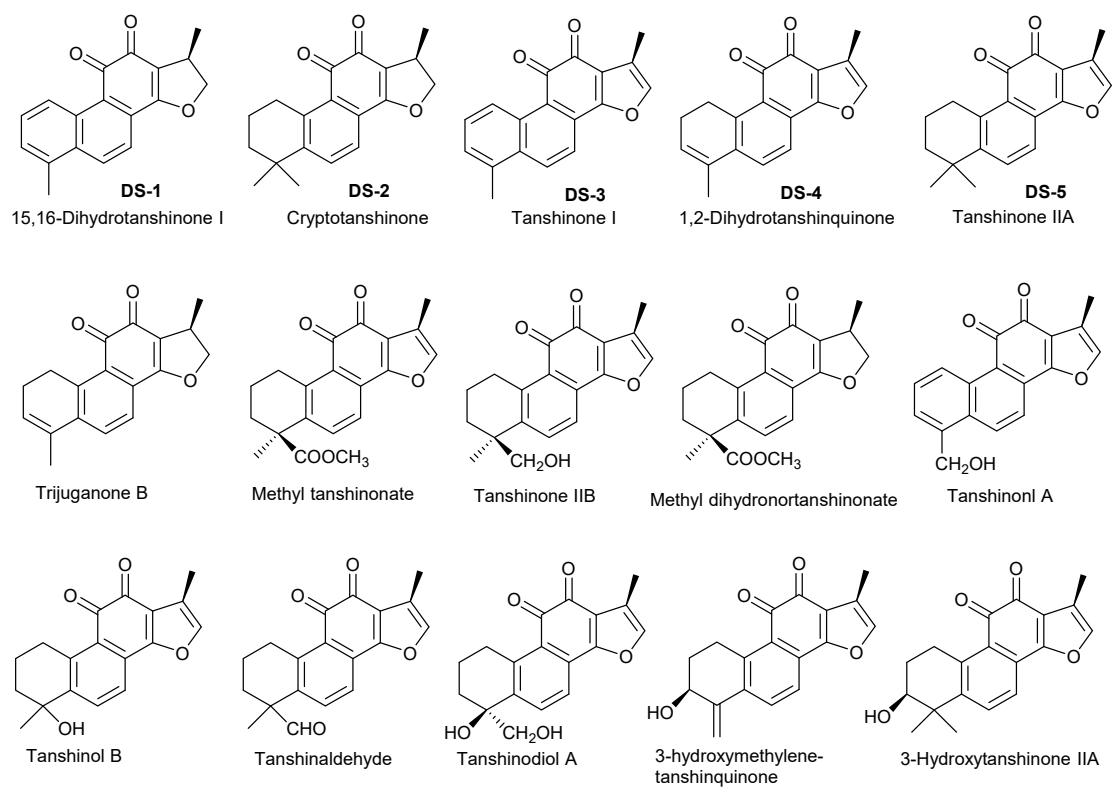


Figure S1. The chemical structures of major tanshinones isolated from *Salvia miltiorrhiza* rhizome.

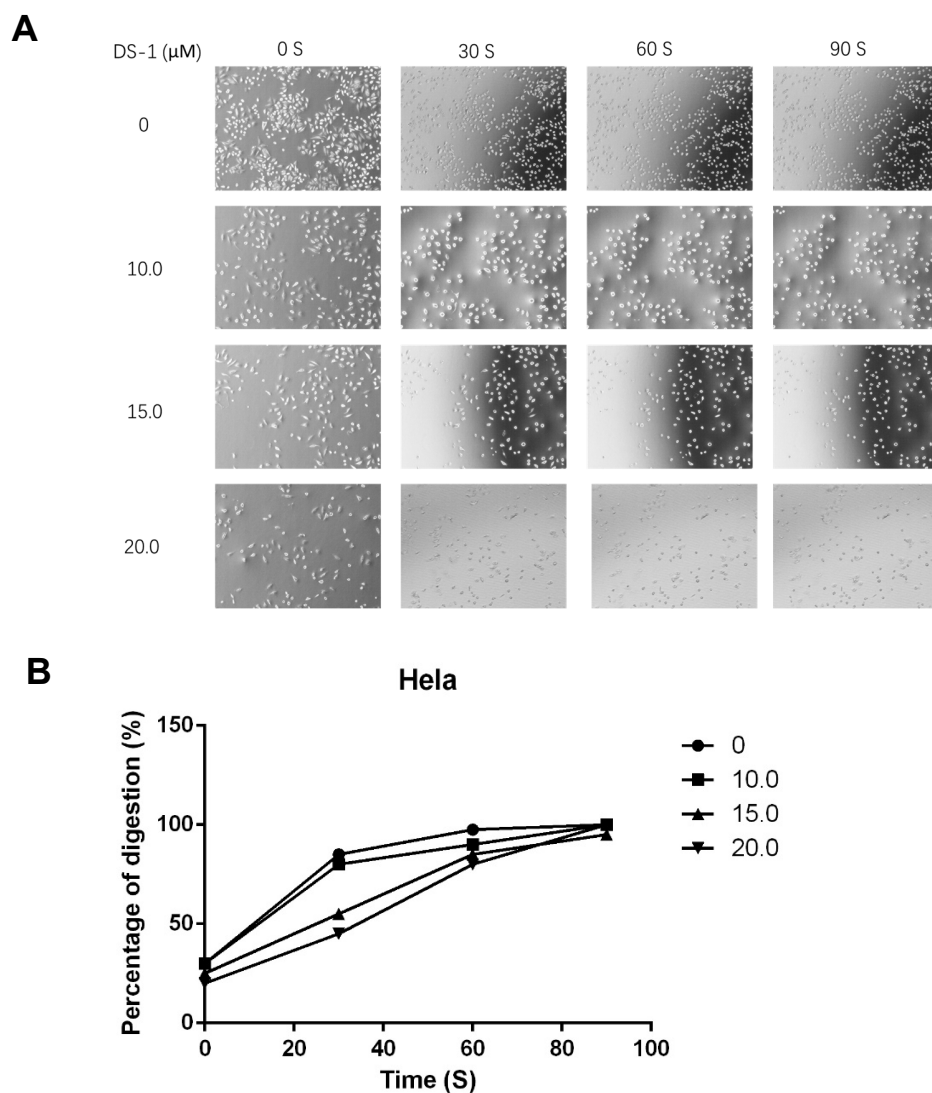


Figure S2. The effects of DS-1 on HeLa cell adhesion on cell culture plates against trypsin digestion. (A) HeLa cells were seeded at 80000 per well in 6-well plates for 12 h, then treated with 0, 10.0, 15.0, 20.0 μM DS-1 for 24 h. After that, cells were washed by PBS solution and digested by 400 μL 0.25% trypsin. During the digestion, cellular morphology was recorded by inverted microscope with camera every 30 seconds. The digestion time was shown in Figure (B).

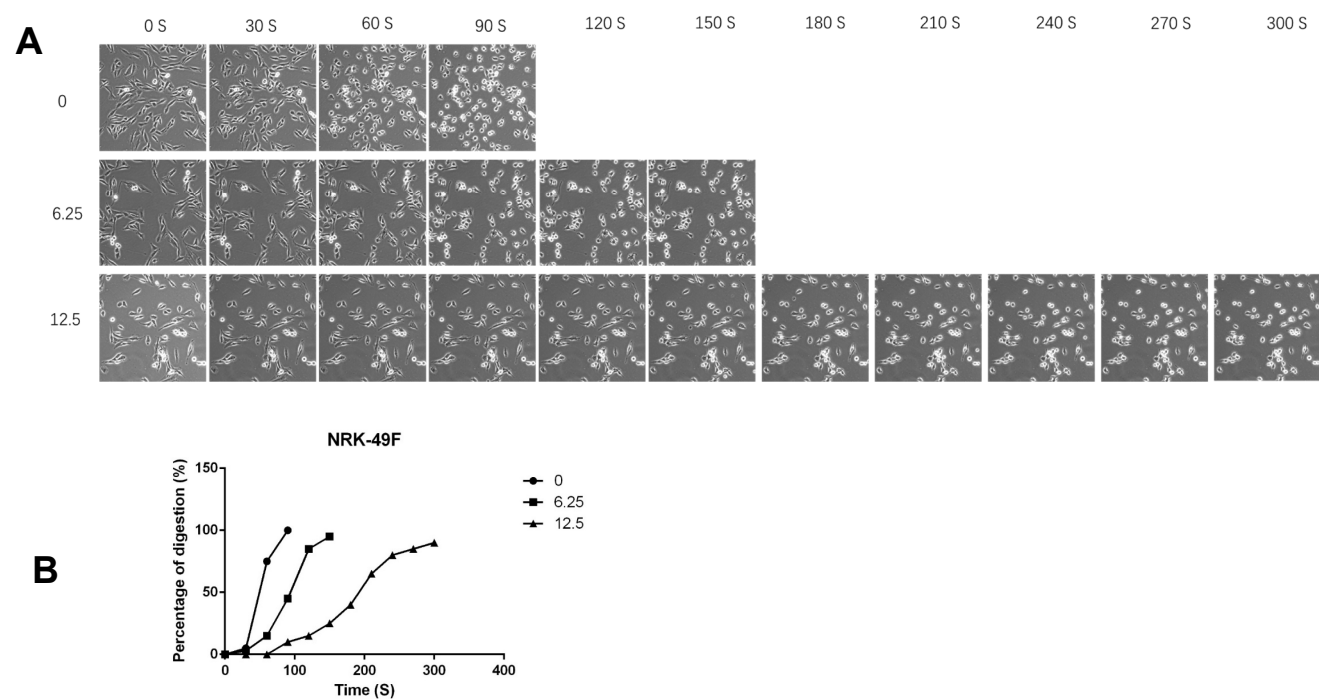


Figure S3. The effects of DS-1 on NRK-49F cell adhesion on cell culture plates against trypsin digestion. **(A)** NRK-49F cells were seeded at 80000 per well in 6-well plate for 12 h, then treated with 0, 6.25, 12.5 μ M DS-1 for 24 h. After that, cells were washed by PBS solution and digested by 400 μ L 0.25% trypsin. During the digestion, cellular morphology was recorded by inverted microscope every 30 seconds. The digestion time was shown in Figure **(B)**.

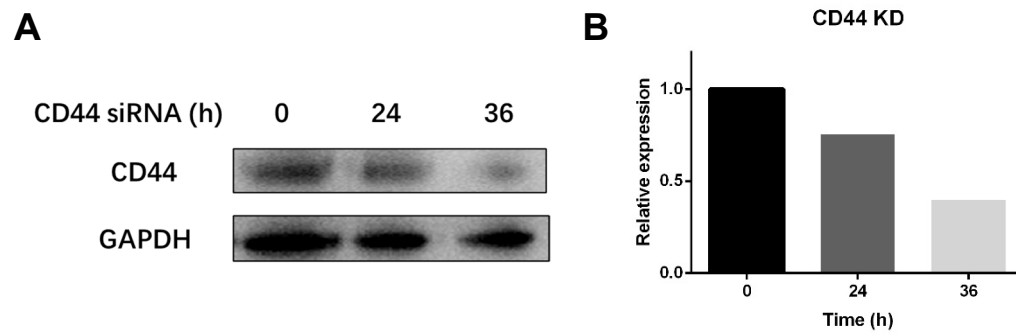


Figure S4. CD44 knockdown by siRNA. (A) U-2 OS cells were cultured in the 6-well plate, then CD44 was knocked down by siRNA for 24 h and 36 h. The relative expression of CD44 was detected by Western Blot and shown in Figure (B).