

Supplementary Materials

2. Distribution, Botanical, Traditional Use and Pharmacological Properties of Five *Piper* Species



Figure S1. *P. amalago* leaves and plant



Figure S2. *P. betle* plant and leaves



Figure S3. *P. hispidum* plant and leaves



Figure S4. *P. longum* leaves and mature dried corns



Figure S5. *P. umbellatum* plant and leaf

3. Chemical Composition of Five *Piper* Species

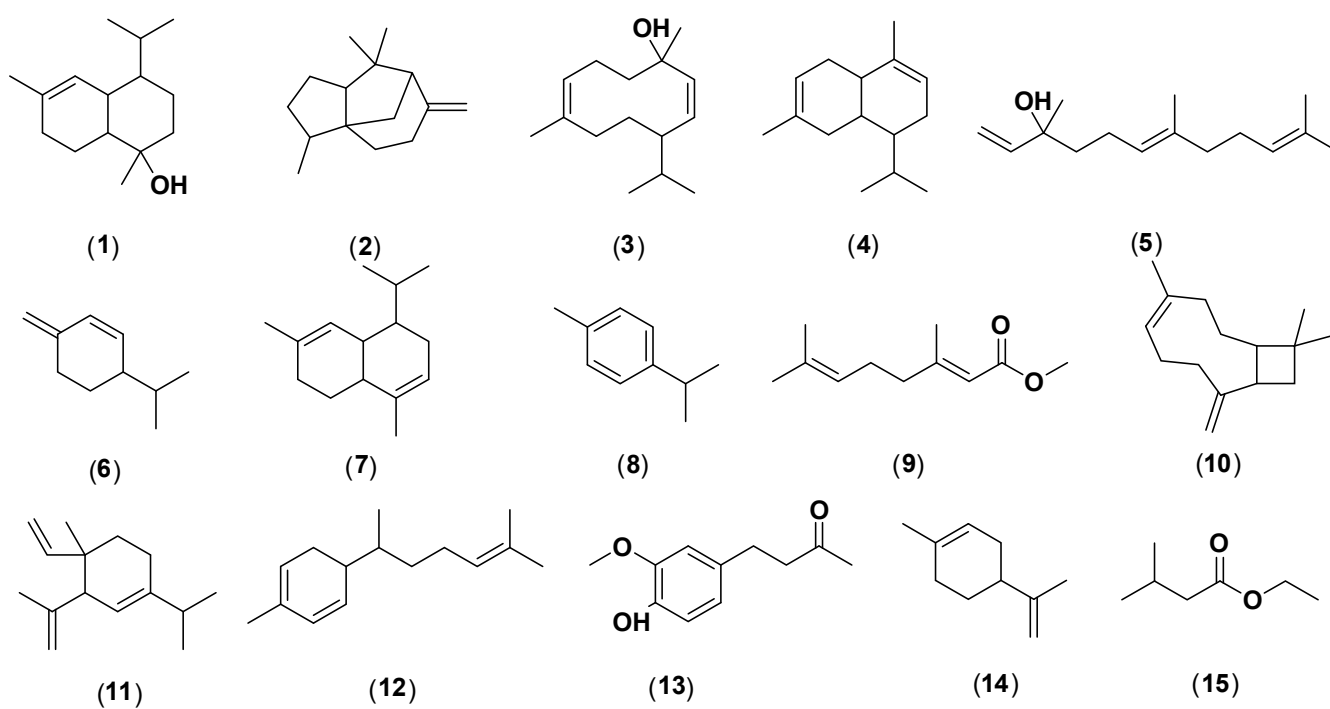


Figure S6. Cont.

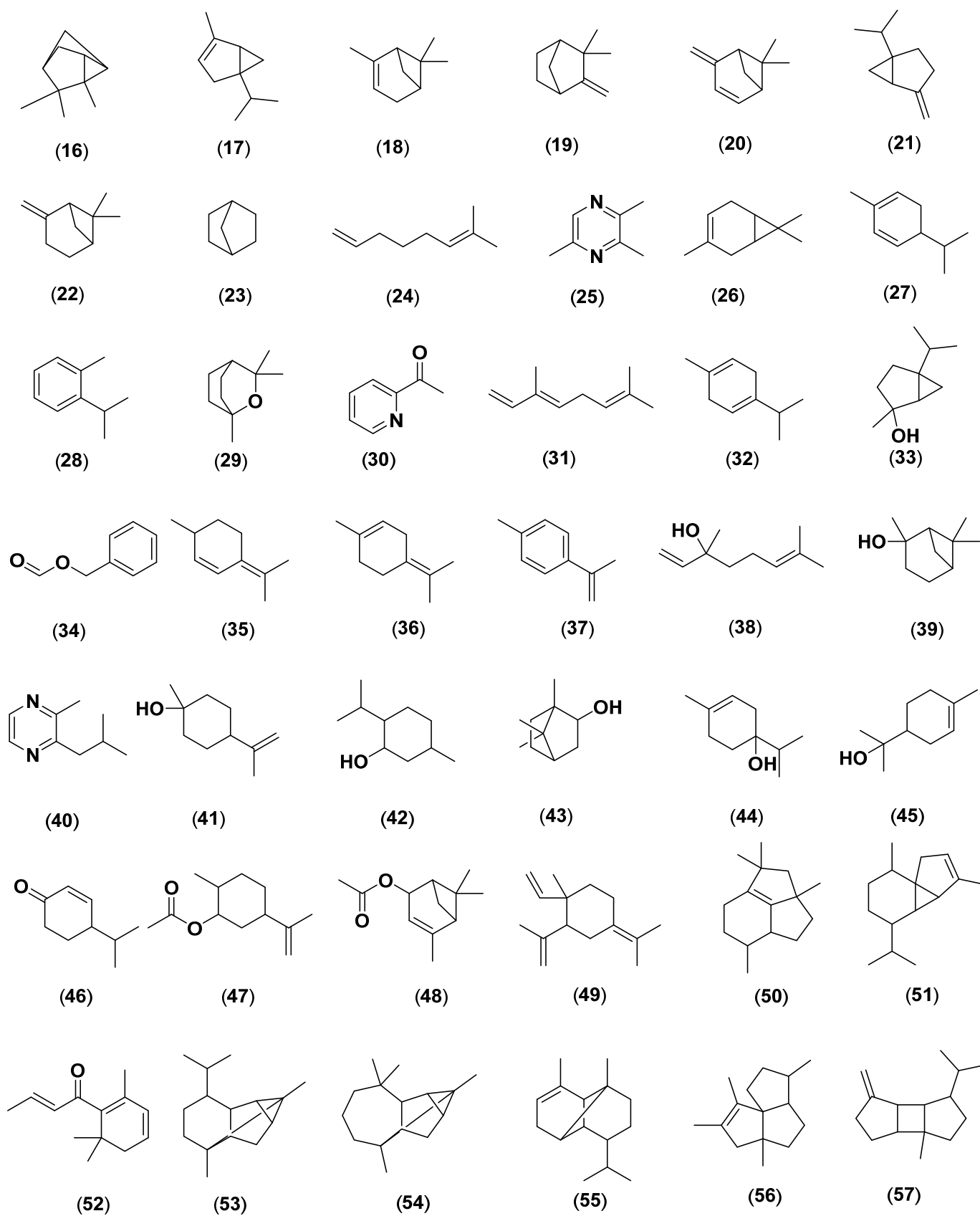


Figure S6. Cont.

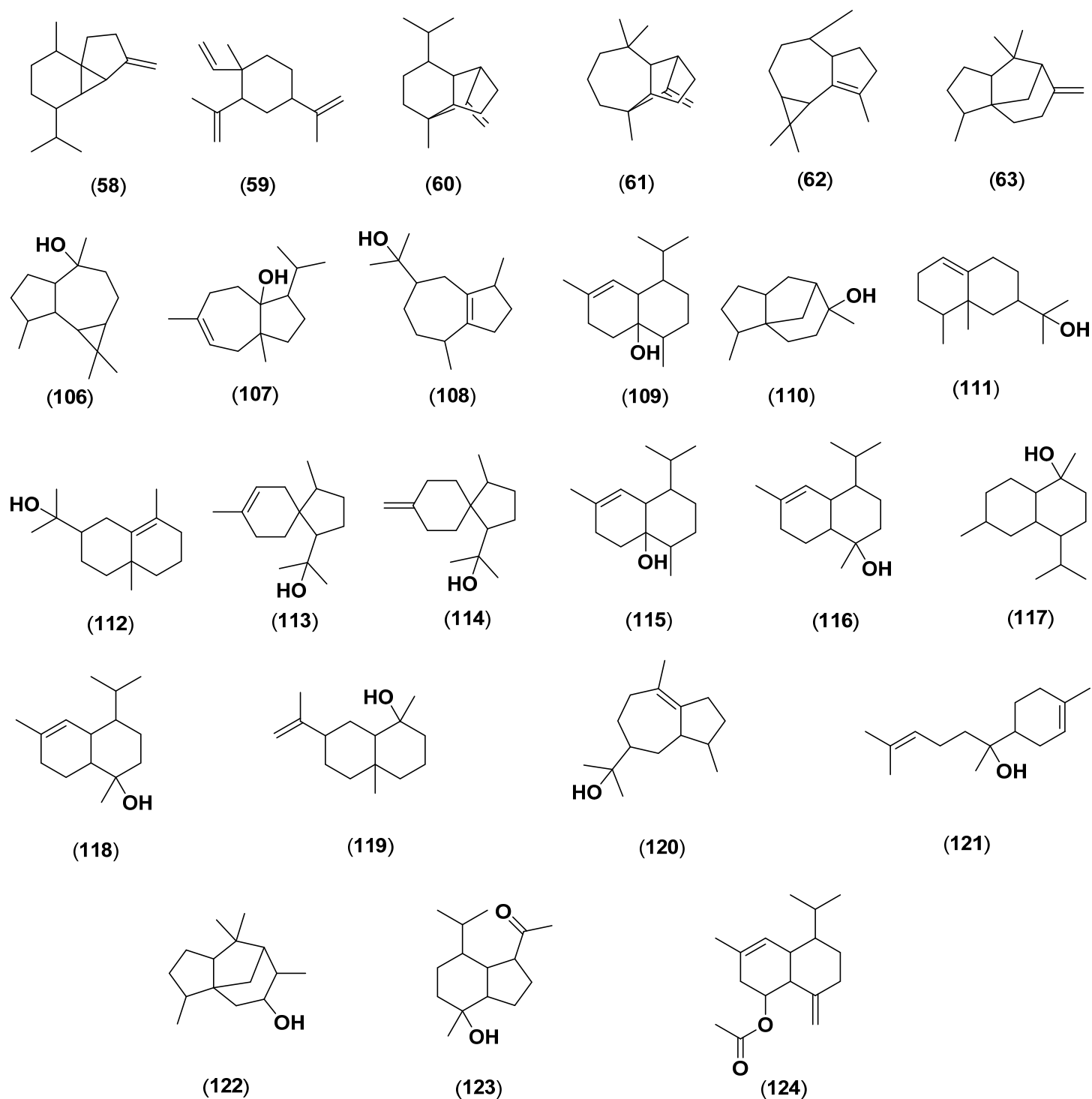


Figure S6. The structure chemical compound of *P. amalago*

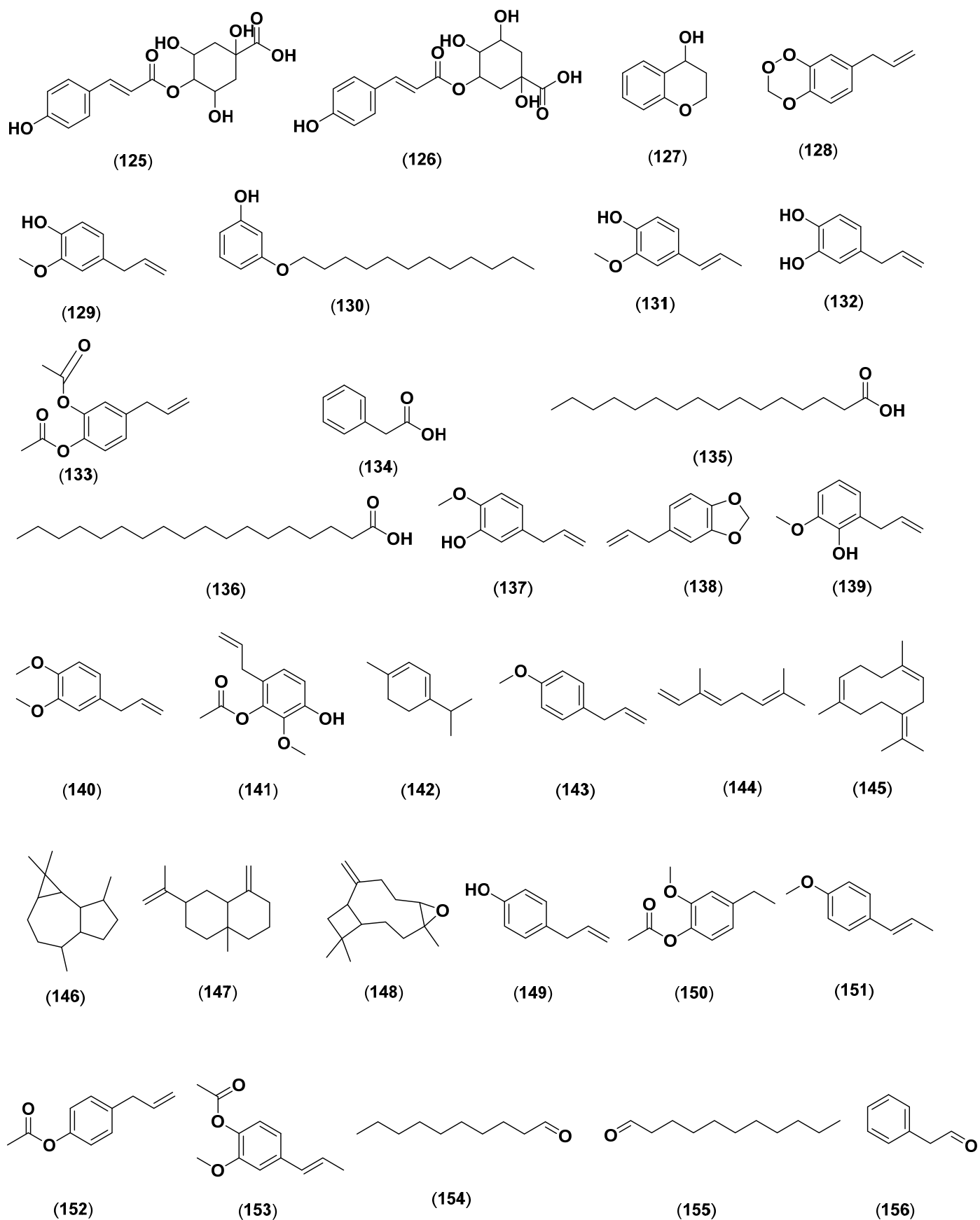
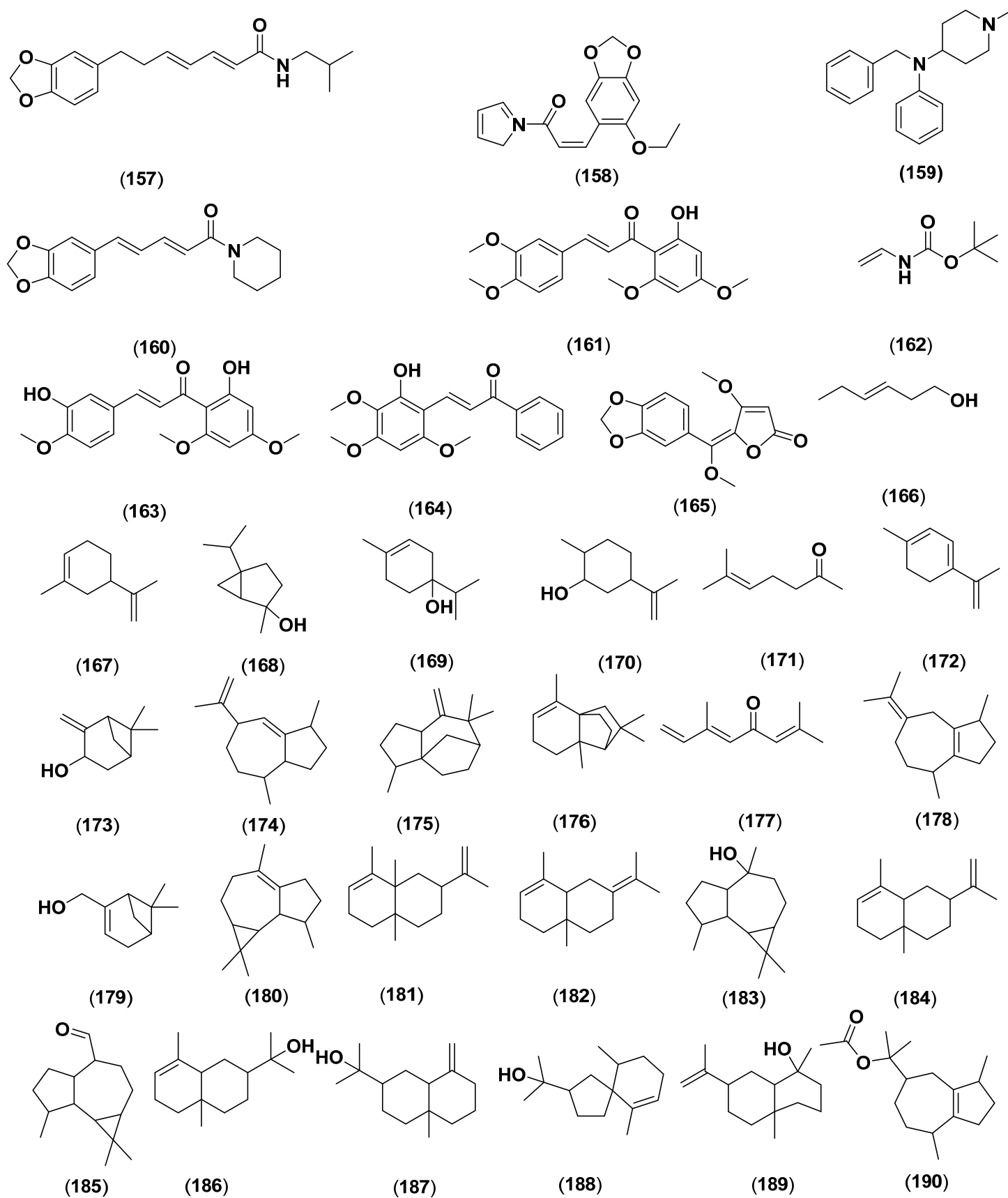


Figure S7. The structure chemical compound of *P. betle*

Figure S8. The structure chemical compound of *P. hispidum*

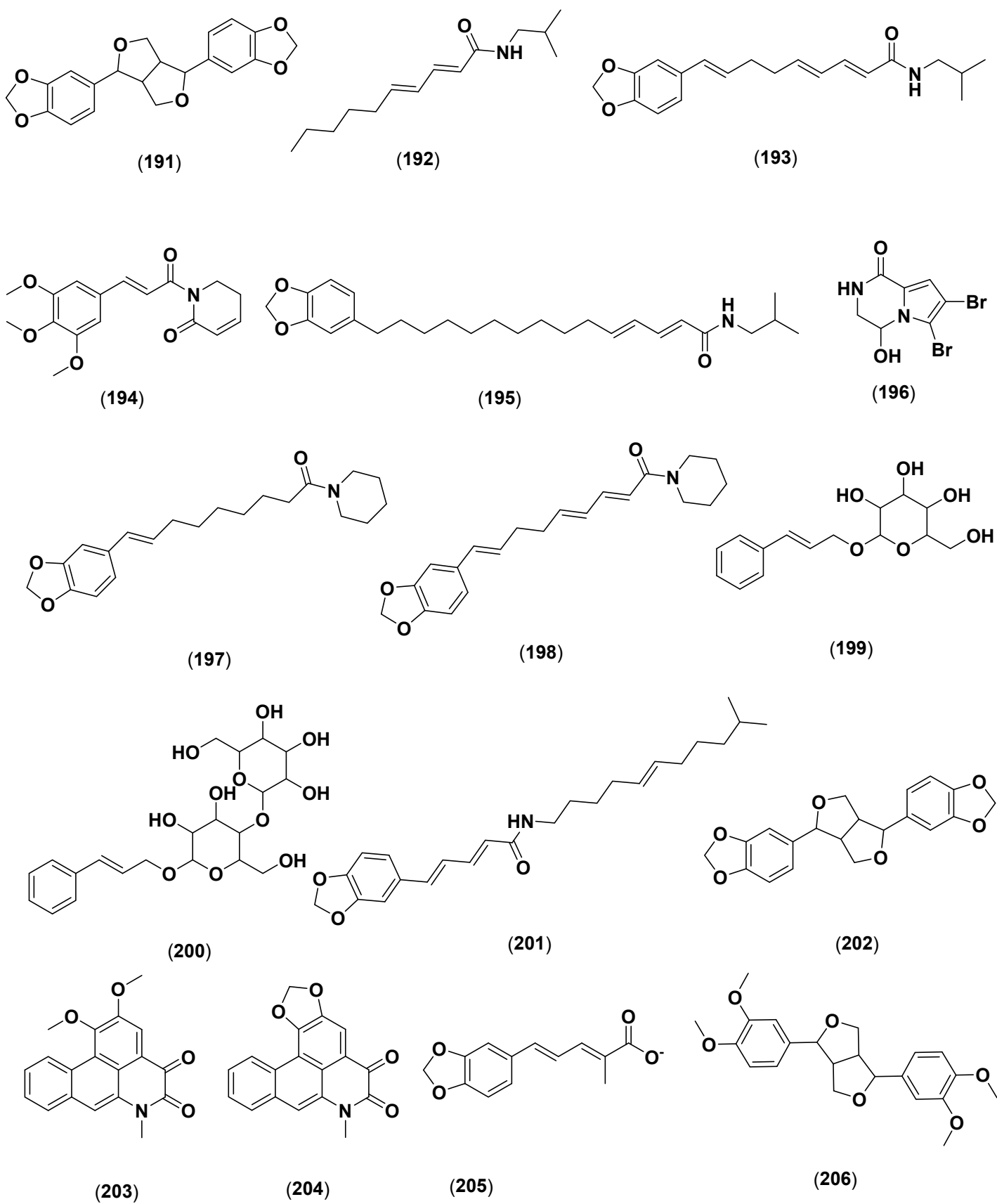
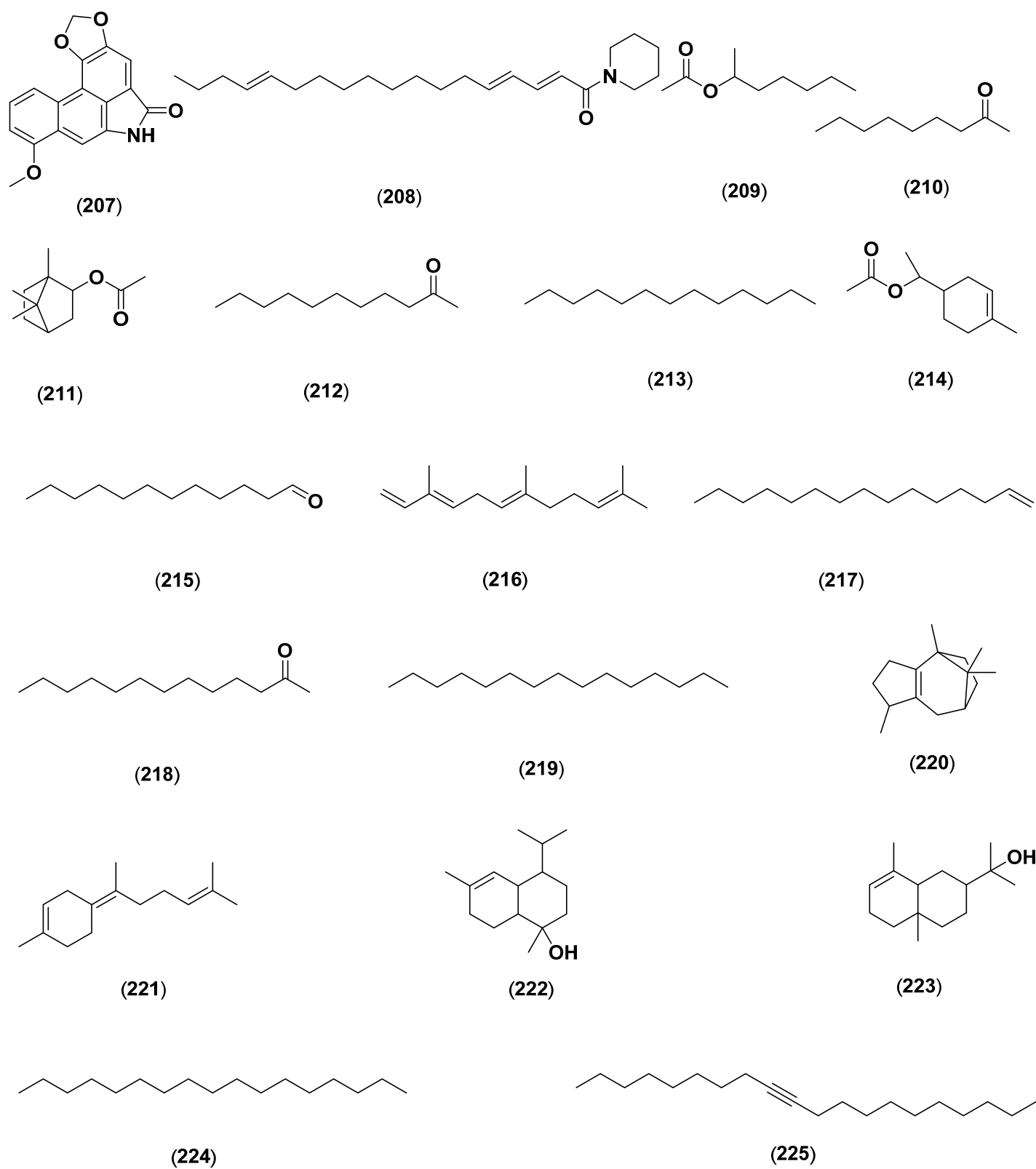
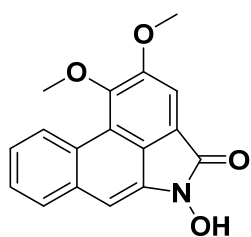
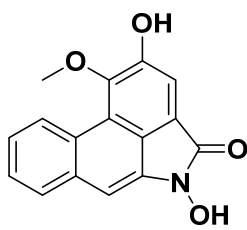


Figure S9. Cont.

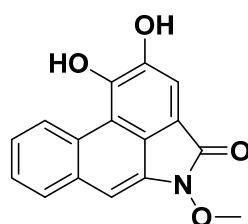
Figure S9. The structure chemical compound of *P. longum*



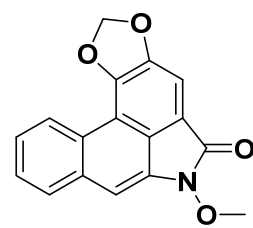
(226)



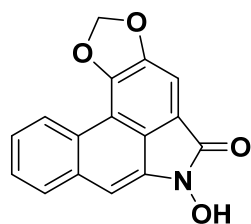
(227)



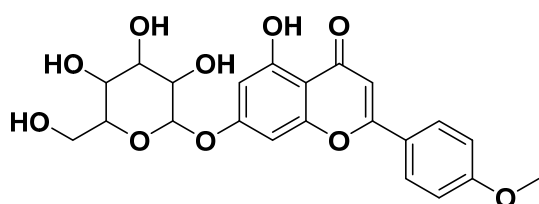
(228)



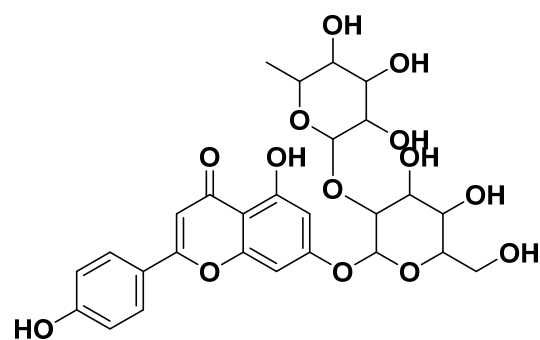
(229)



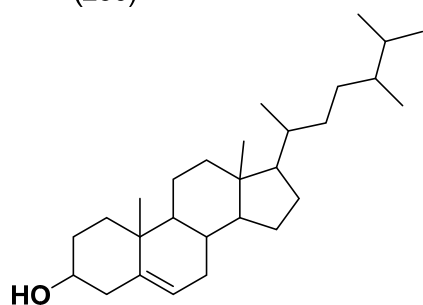
(230)



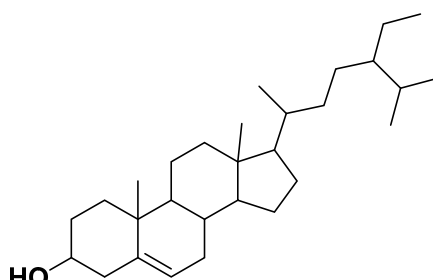
(231)



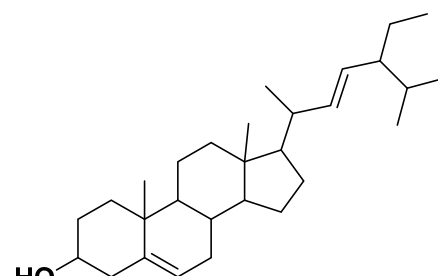
(232)



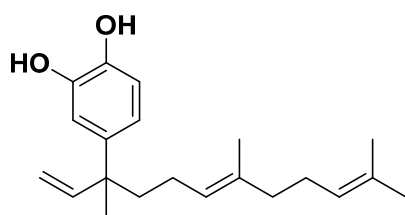
(233)



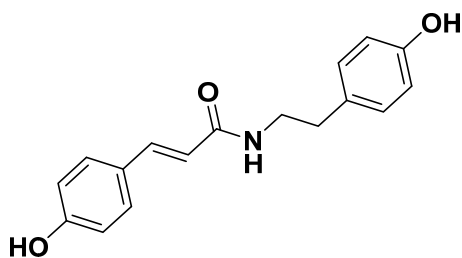
(234)



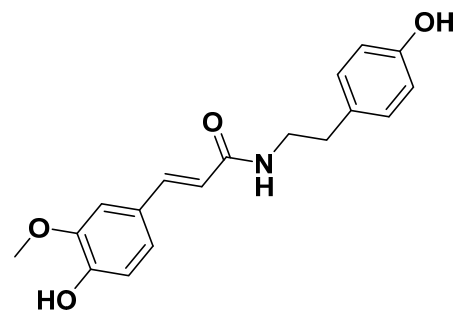
(235)



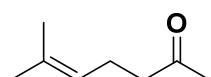
(236)



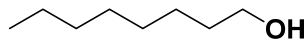
(237)



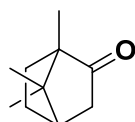
(238)



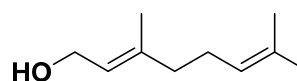
(239)



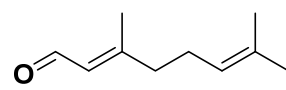
(240)



(241)



(242)



(243)

Figure S10. Cont.

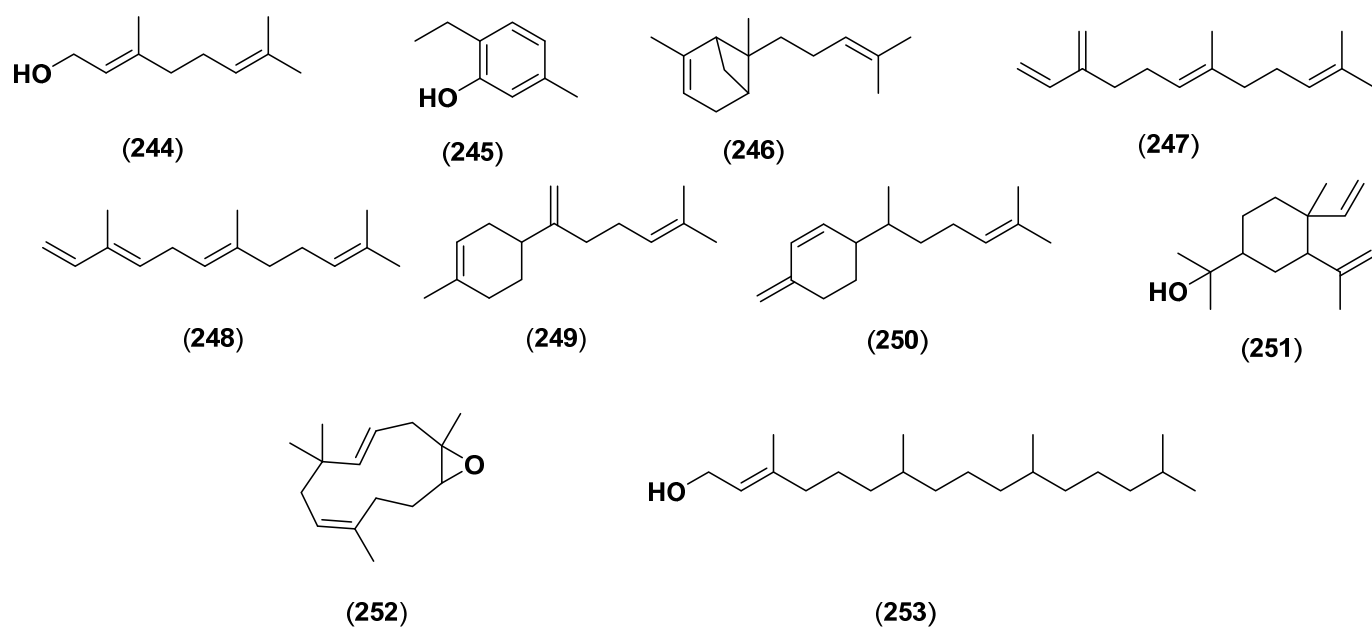


Figure S10. The structure chemical compound of *P. umbellatum*

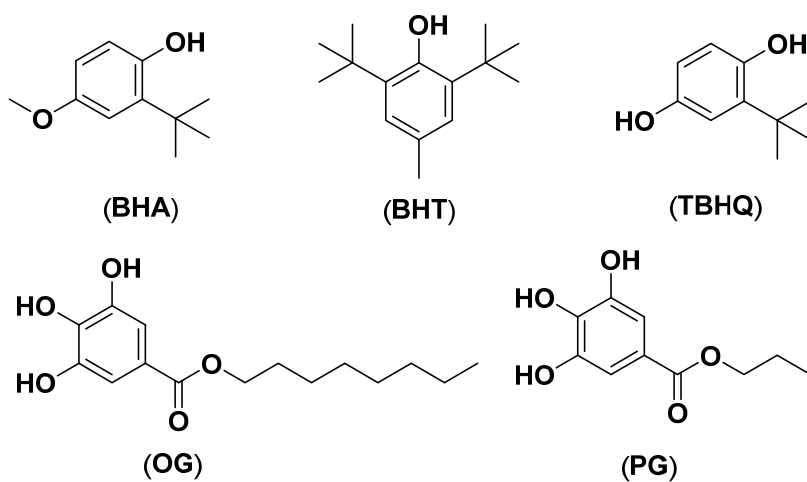


Figure S11. The chemical structure of synthetic antioxidants