

Supplementary Materials

Isolation, Structural Characterization, and Hypoglycemic Activities In Vitro of Polysaccharides from *Pleurotus eryngii*

Pin Gong ^{1,†}, Hui Long ^{1,†}, Yuxi Guo ^{1,†}, Siyuan Wang ¹, Fuxin Chen ² and Xuefeng Chen ^{1,*}

¹ School of Food and Biological Engineering, Shaanxi University of Science and Technology, Xi'an 710021, China

² School of Chemistry and Chemical Engineering, Xi'an University of Science and Technology, Xi'an 710054, China

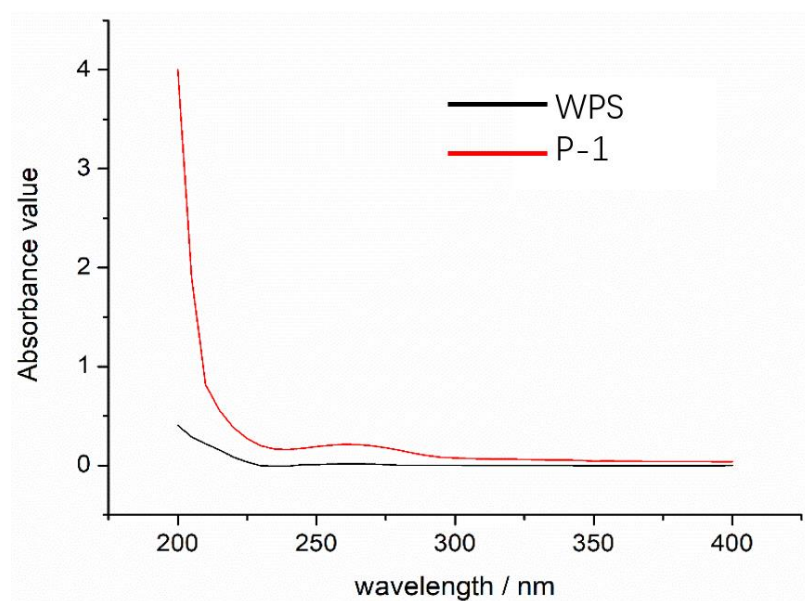
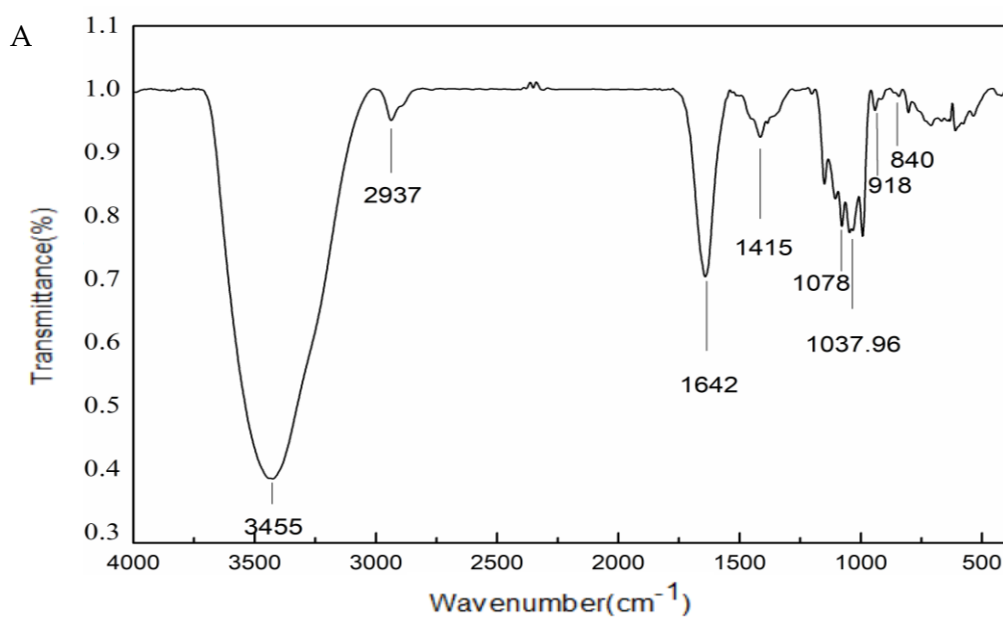


Figure S1. Ultraviolet full-wavelength scanning of PEP (WPS and P-1).



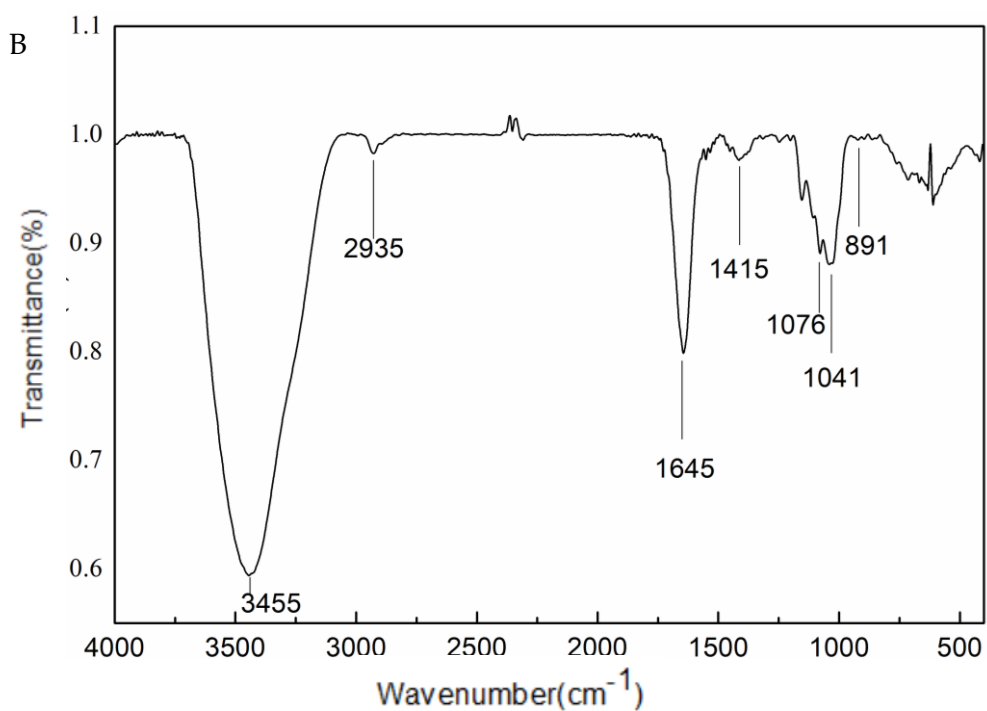


Figure S2. IR spectra of different PEPs (A) WPS. (B) P-1.

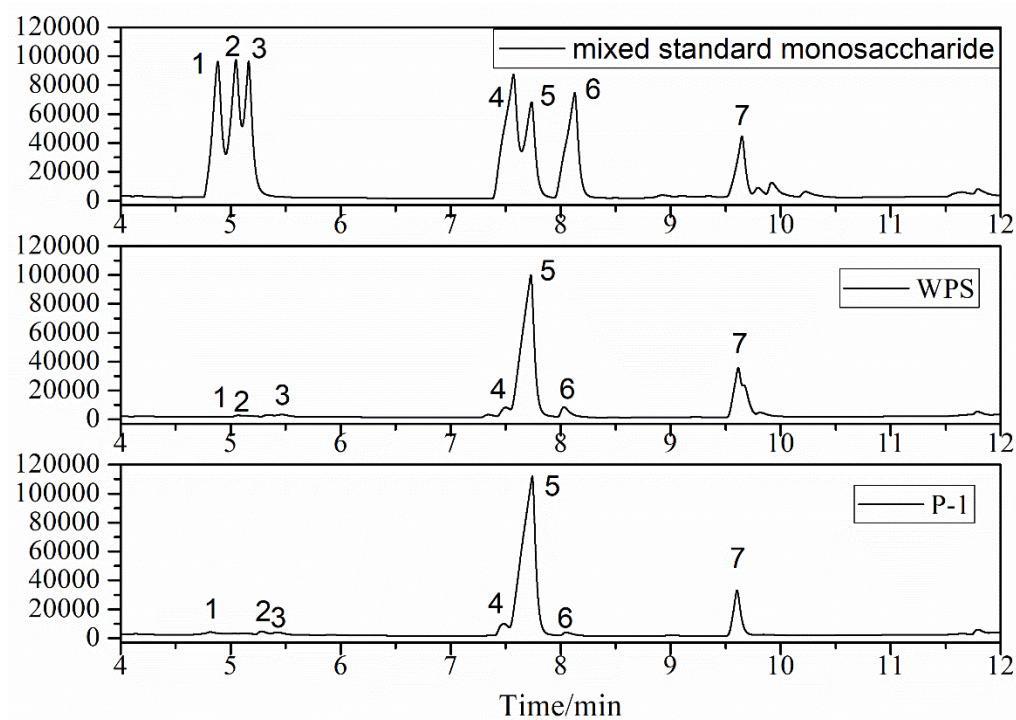
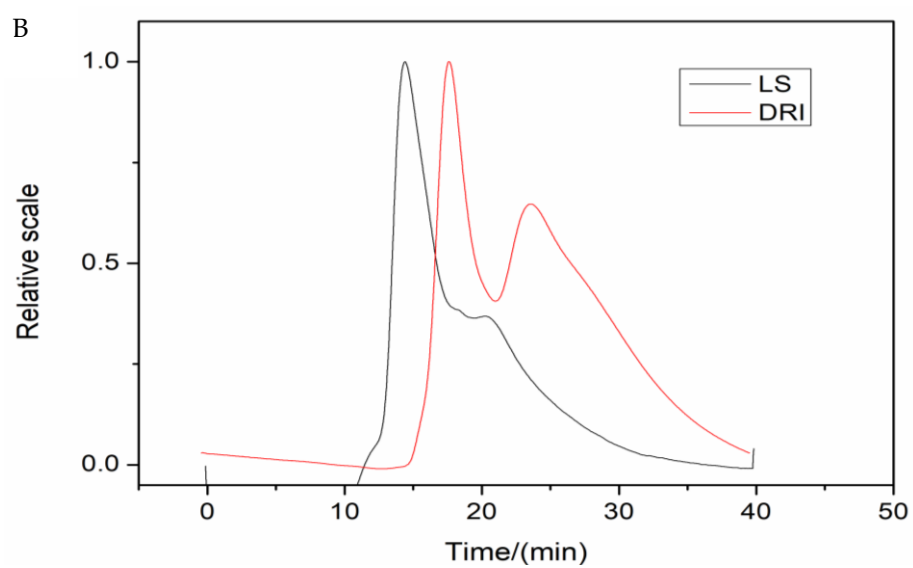
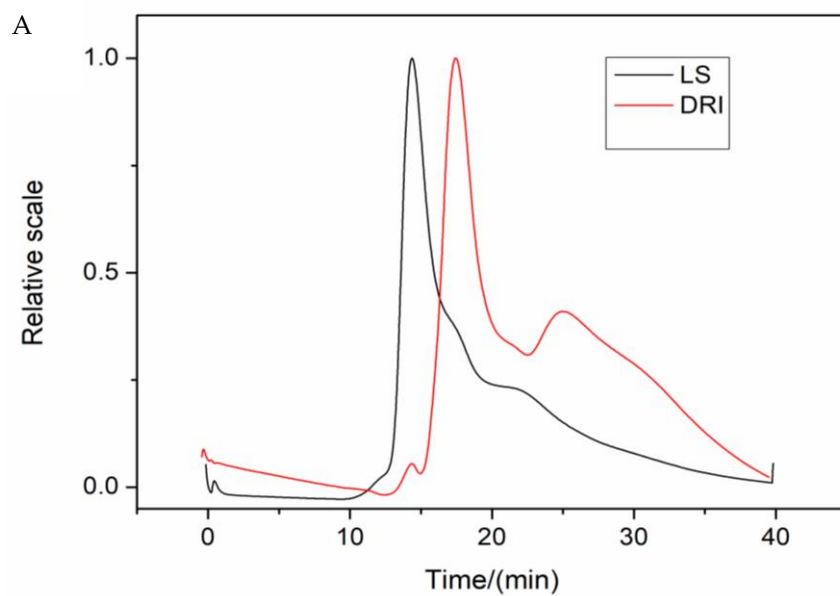


Figure S3. GC of PEPs (A)WPS. (B) P-1. (C) GC of mixed standard monosaccharide. 1. rhamnose; 2. arabinose; 3. xylose; 4. mannose; 5. glucose; 6 galactose; 7. internal standard.



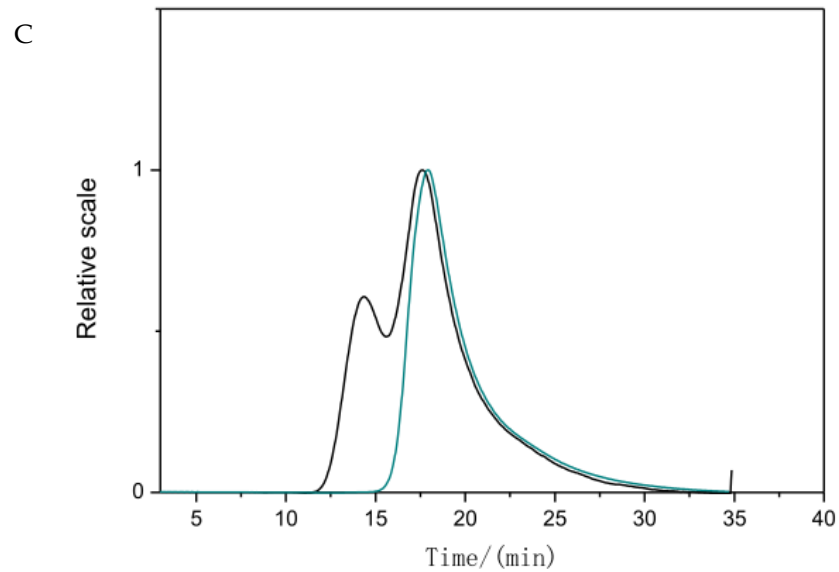


Figure S4. Gel Permeation Chromatography (GPC) spectrum of PEPs (A) GPC spectrum of WPS. (B) GPC spectrum of P-1. (C) GPC spectrum of glucan.

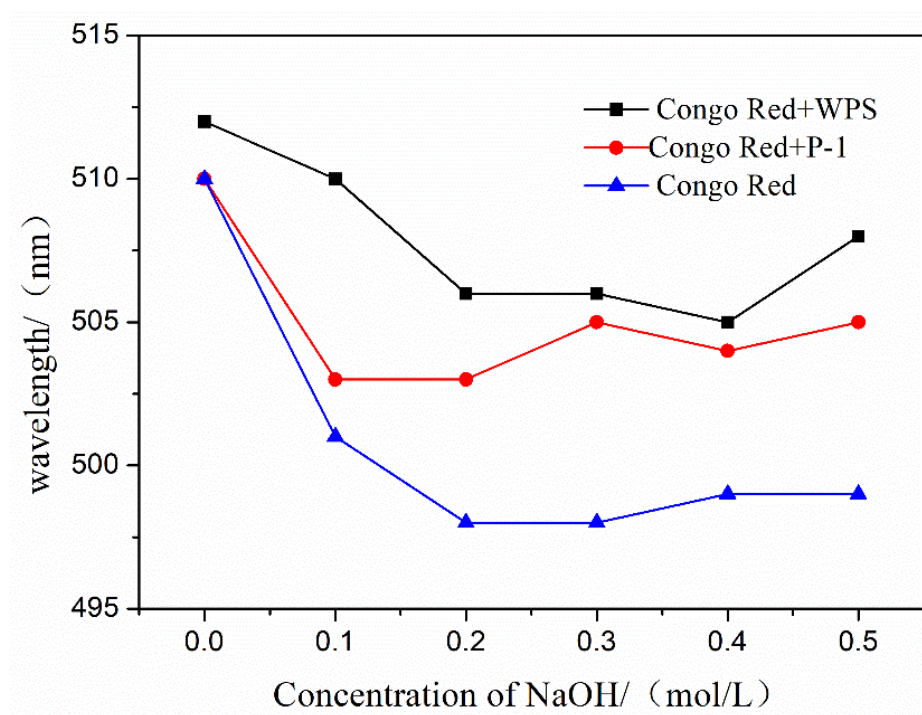


Figure S5. Congo red test of PEPs (WPS and P-1).