

Supplementary Material S1

Response surface modeling and optimization of the extraction of phenolic antioxidants from olive mill pomace

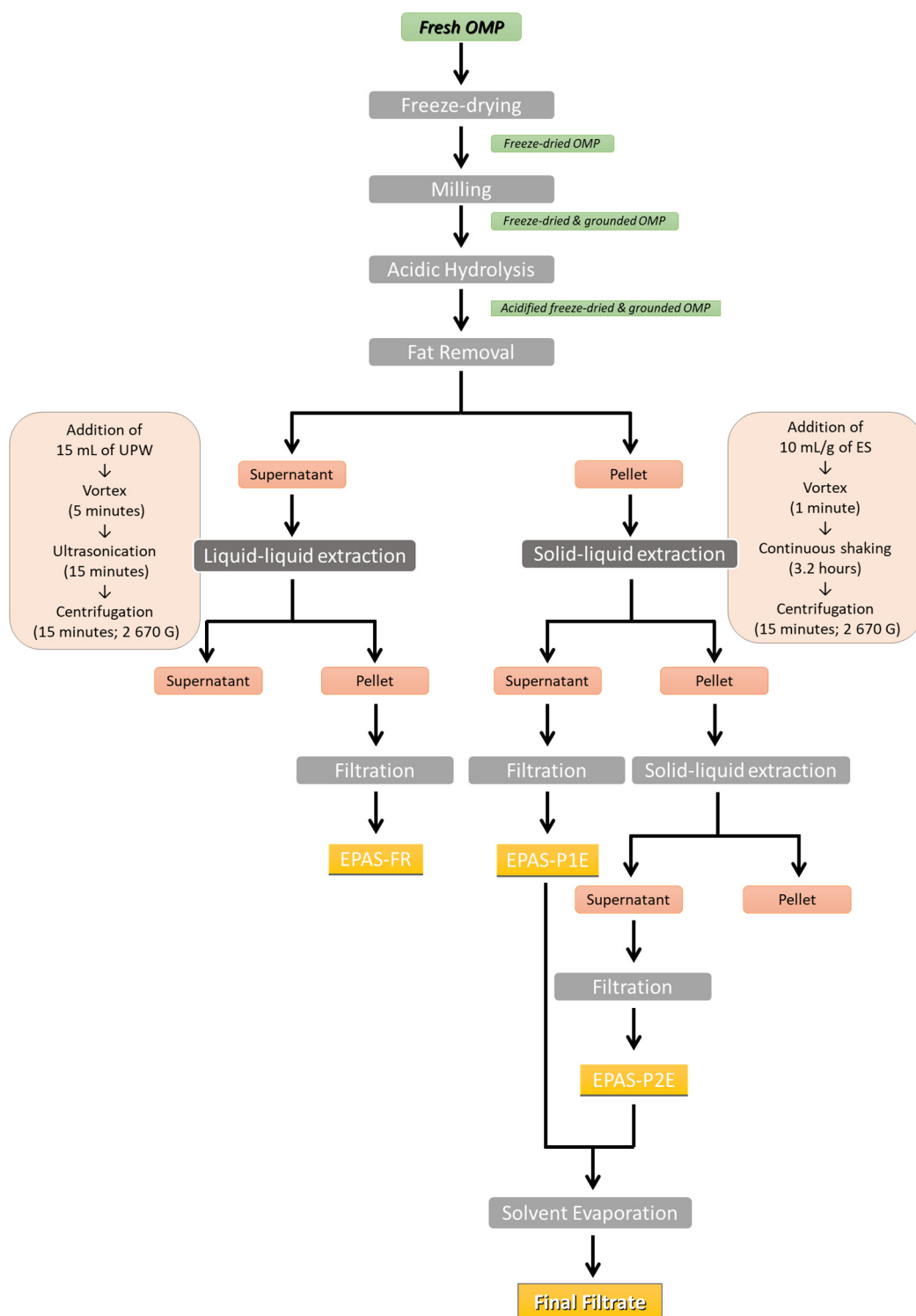


Figure S1. Optimized two-step solvent extraction for the recovery of phenolic antioxidants from olive mill pomace samples (ES – Extraction Solvent; OMP – Olive Mill Pomace; EPAS-FR – Extracted Phenolic Antioxidants during the Fat Removal procedure; EPAS-P1E – Extracted Phenolic Antioxidants during the primary extraction; EPAS-P2E – Extracted Phenolic Antioxidants from the secondary extraction procedure; UPW – Ultrapure water).