

Supplement for the Article

Supercritical CO₂ Plant Extracts Show Antifungal Activities against Crop-Borne Fungi

Katja Schoss¹, Nina Kočevlar Glavač¹, Jasna Dolenc Koce^{2*}, Sabina Anžlovar²

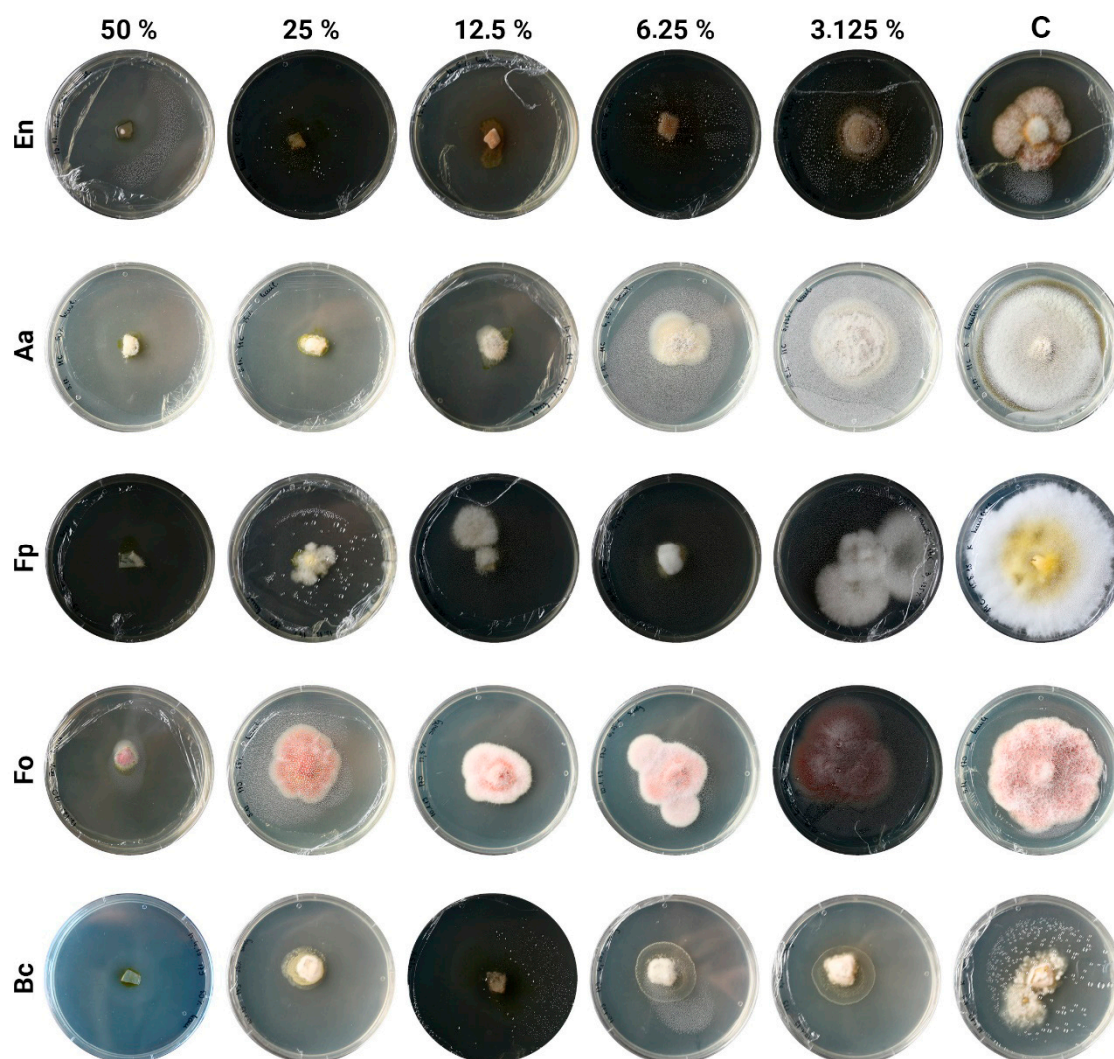


Figure S1. Concentration-dependent fungal growth after treatments with chamomile SFE-CO₂ extracts and control (C). Fungal strains are indicated with letters: En – *E. nigrum*, Aa – *A. alternata*, Fp – *F. poae*, Fo – *F. oxysporum*, Bc – *B. cinerea*.

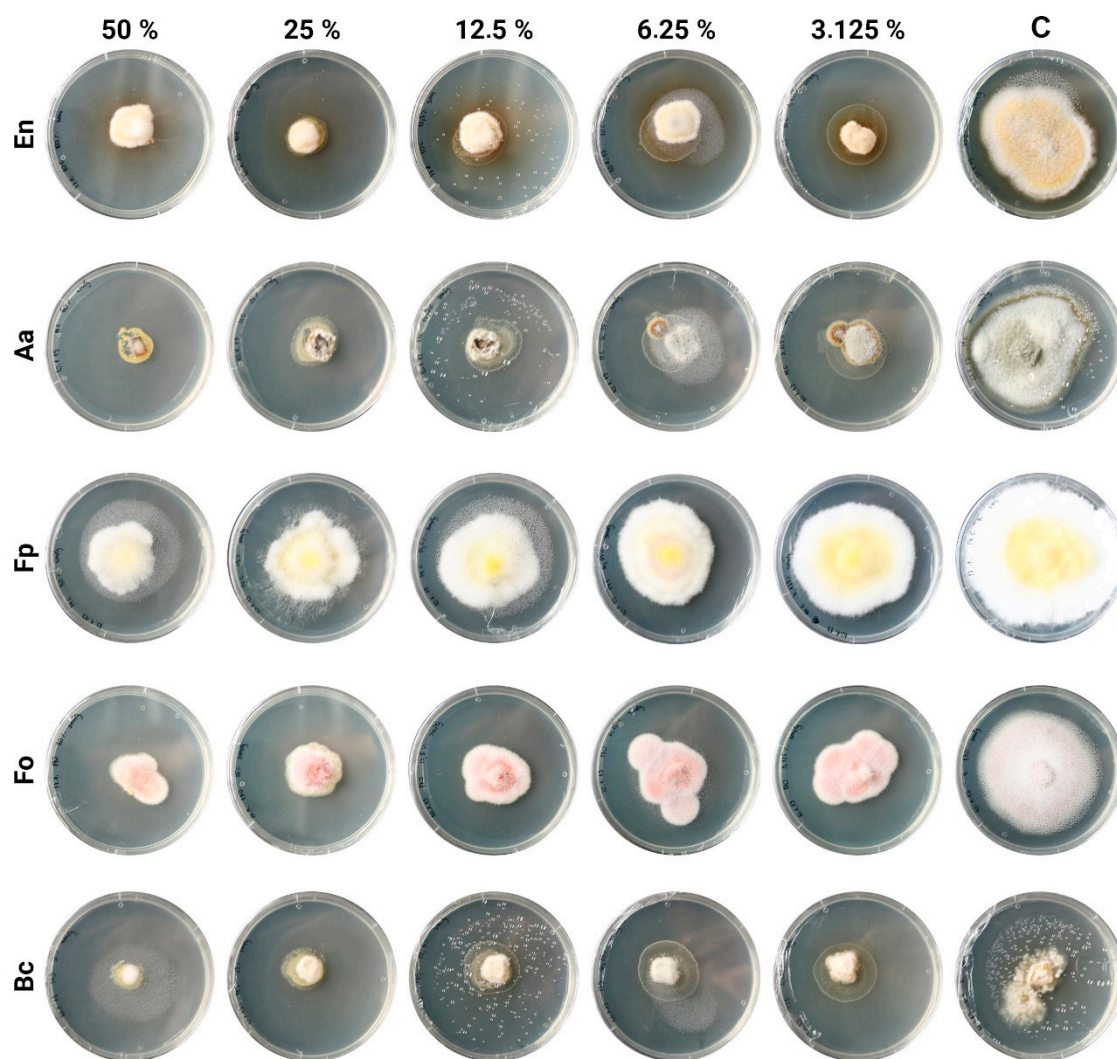


Figure S2. Concentration-dependent fungal growth after treatments with sandy everlasting SFE-CO₂ extracts and control (C). Fungal strains are indicated with letters: En – *E. nigrum*, Aa – *A. alternata*, Fp – *F. poae*, Fo – *F. oxysporum*, Bc – *B. cinerea*.