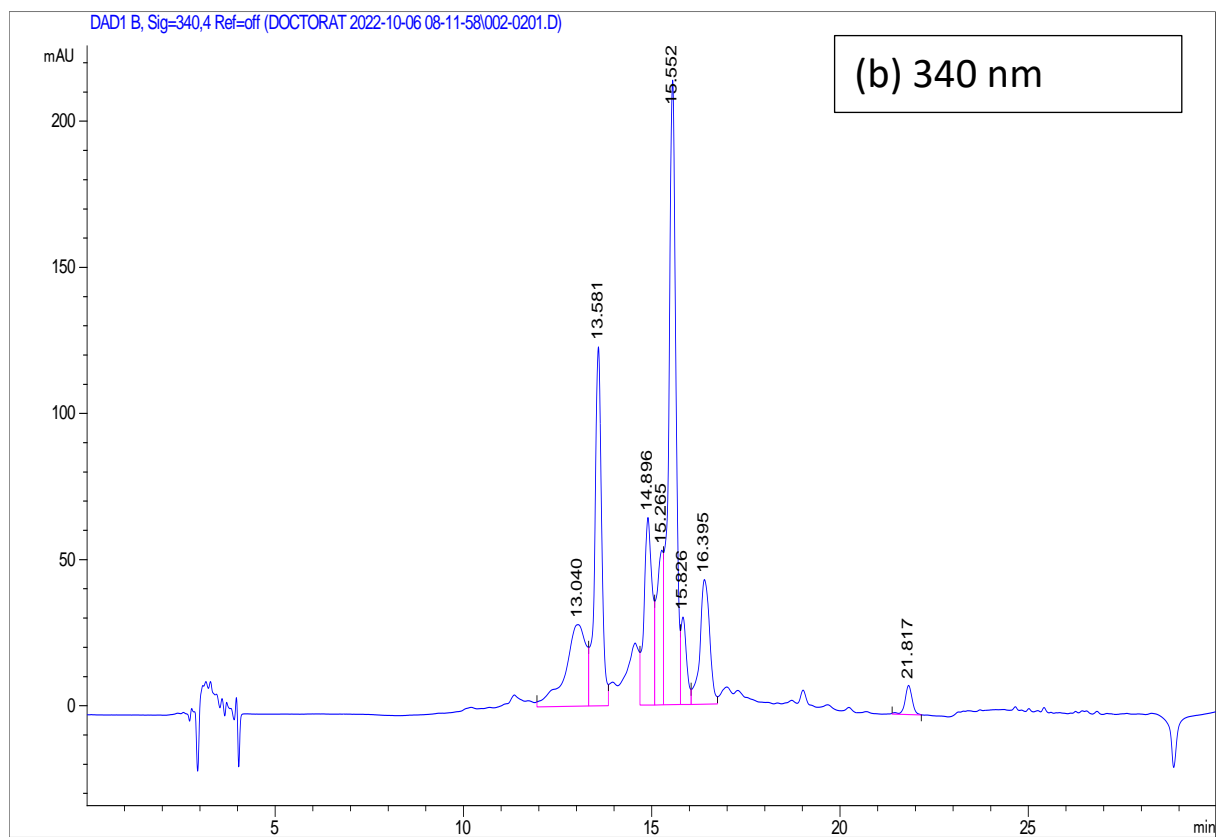
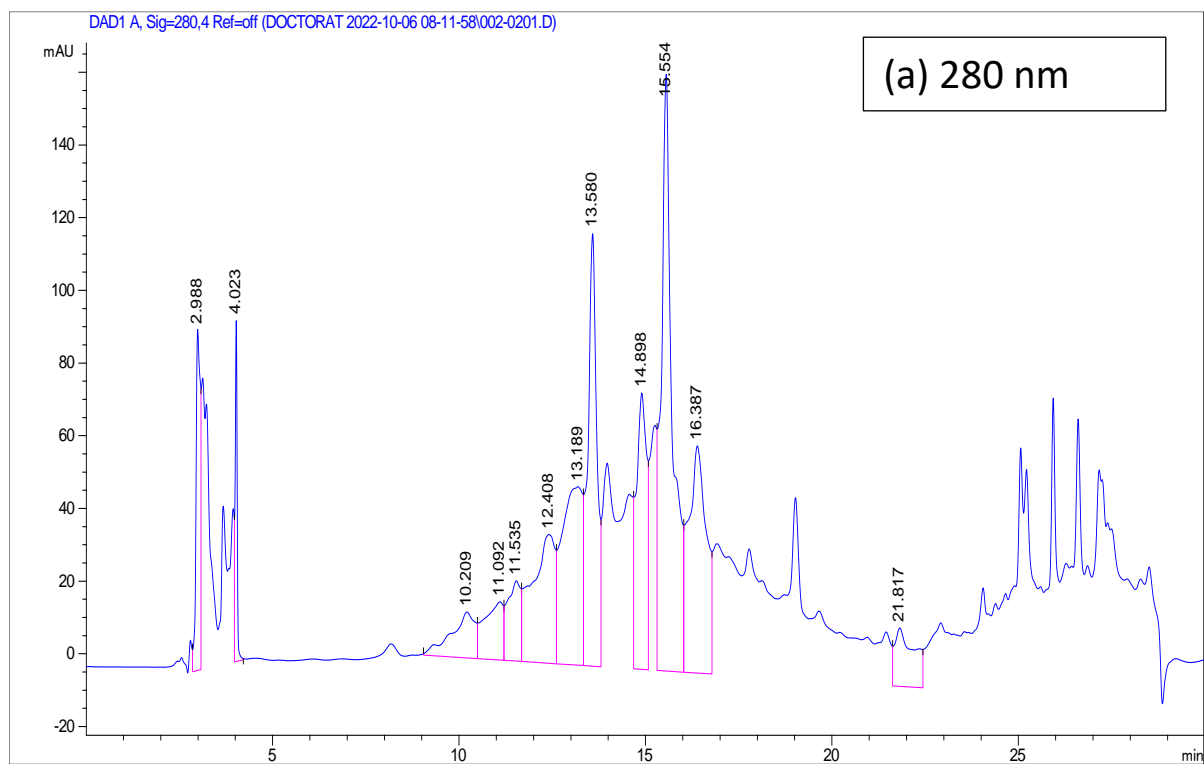


Supplementary material



Supplementary material

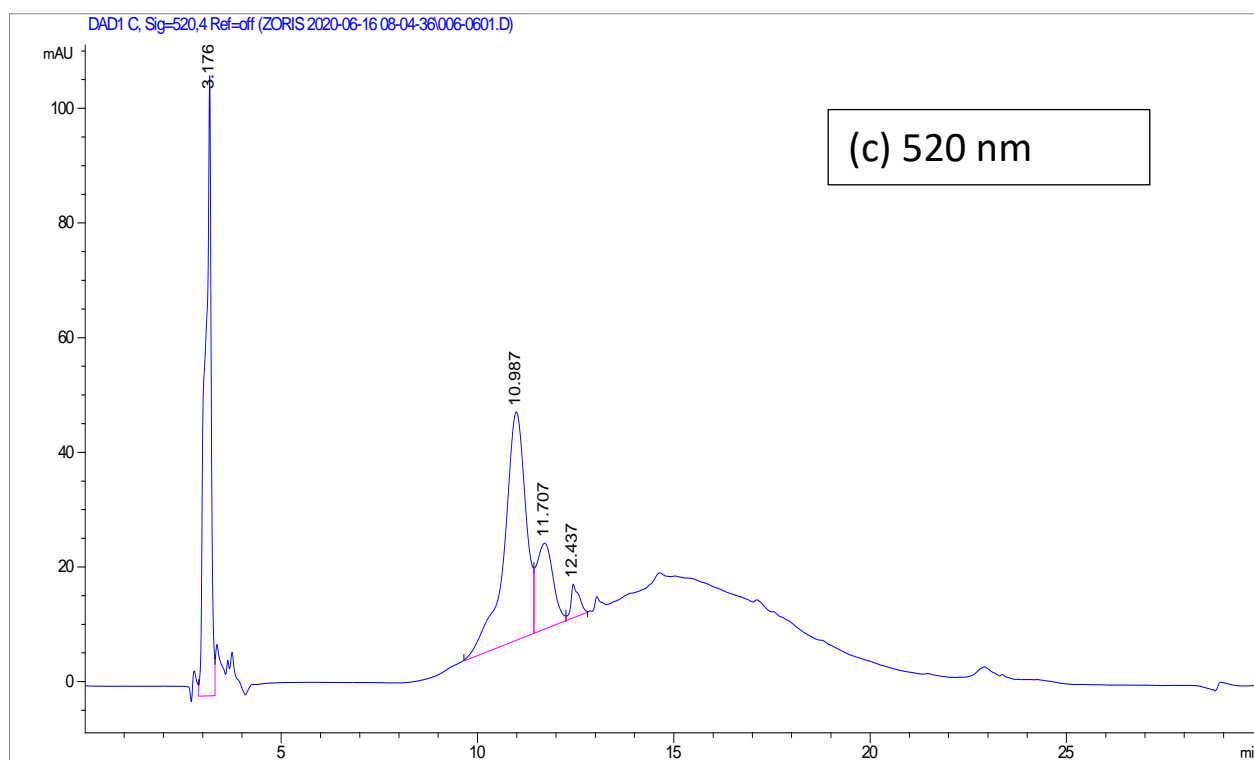


Figure S1. HPLC chromatograms of Aronia sample recorded at different wavelength. **(a)** 280 nm; **(b)** 340 nm and **(c)** 520 nm.

Supplementary material

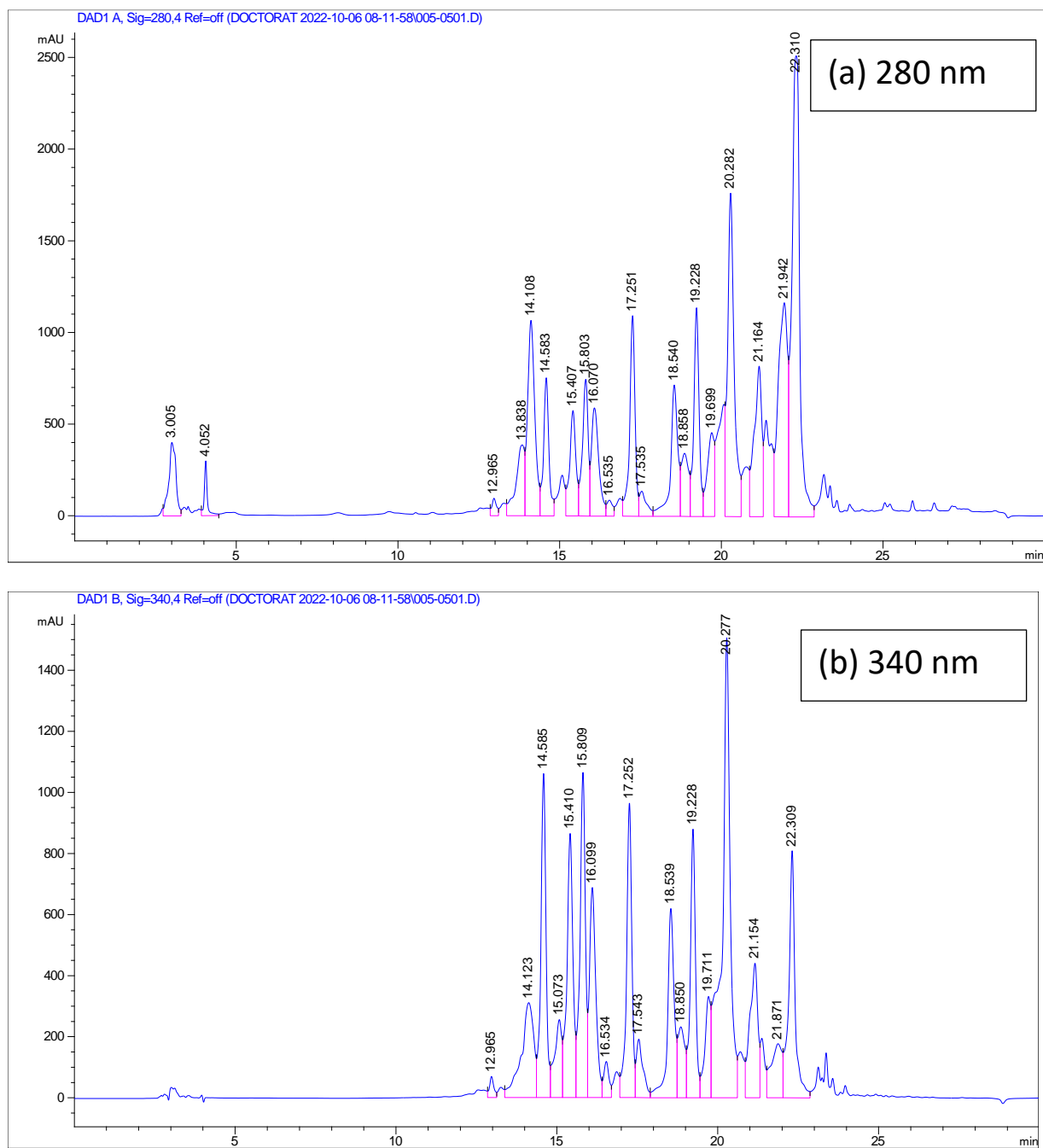


Figure S2. HPLC chromatograms of pollen sample recorded at different wavelength: (a) 280 nm and (b) 340 nm.