

Supplementary Information

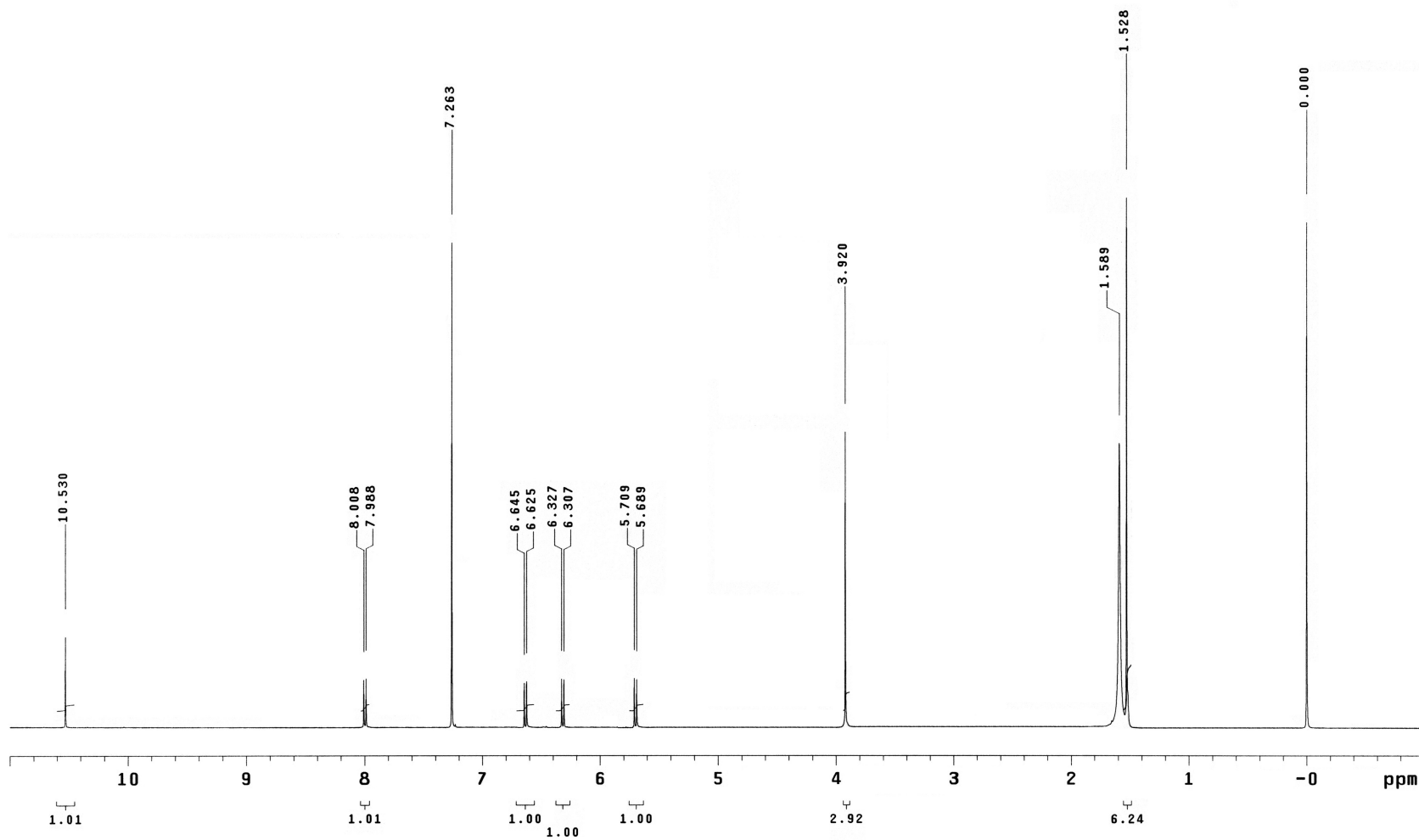


Figure S1. ^1H NMR spectrum (CDCl_3 , 500 MHz) of **1**.

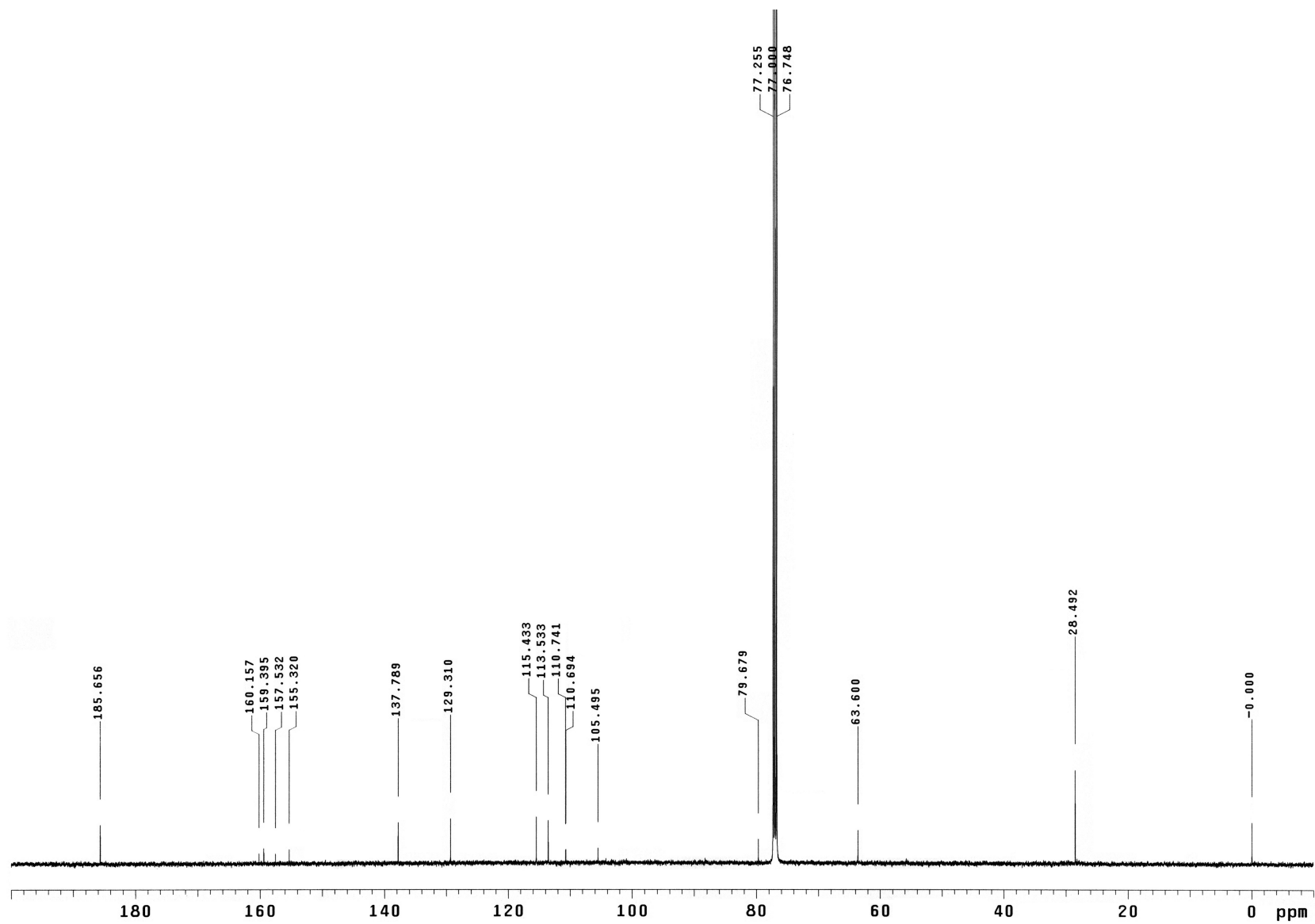


Figure S2. ^{13}C NMR spectrum (CDCl_3 , 125 MHz) of 1.

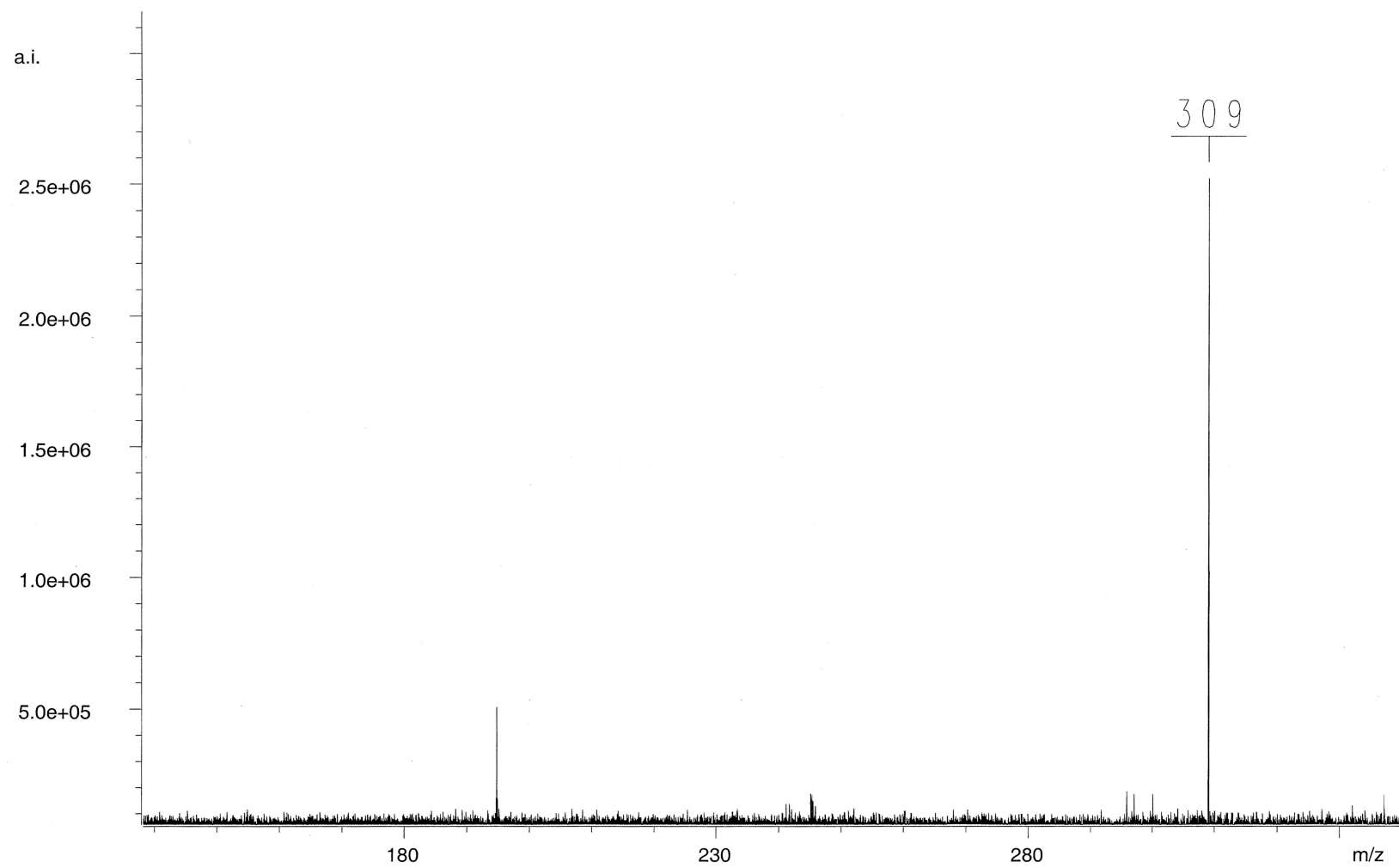


Figure S3. ESI-MS spectrum of 1.

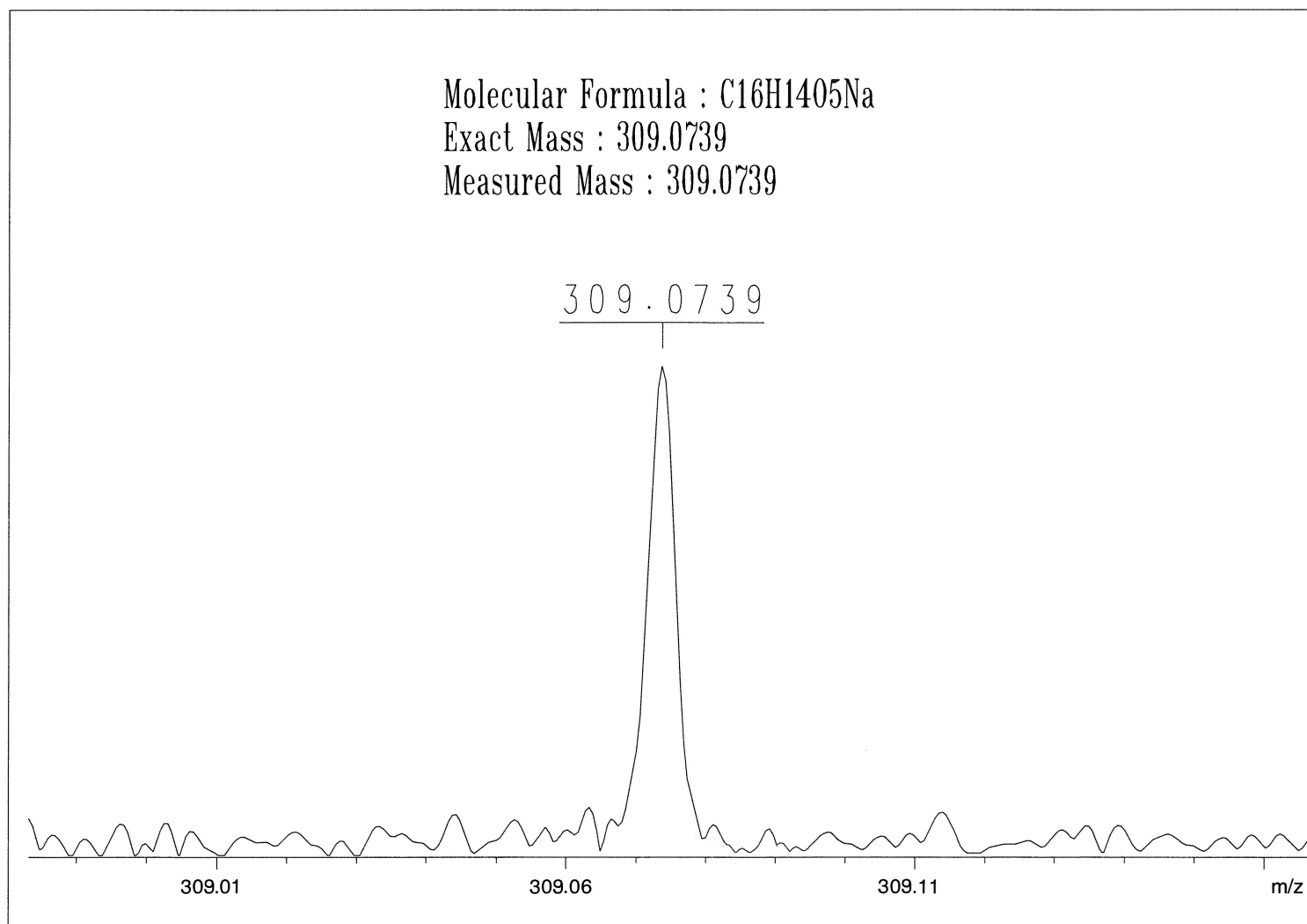


Figure S4. HR-ESI-MS spectrum of **1**.

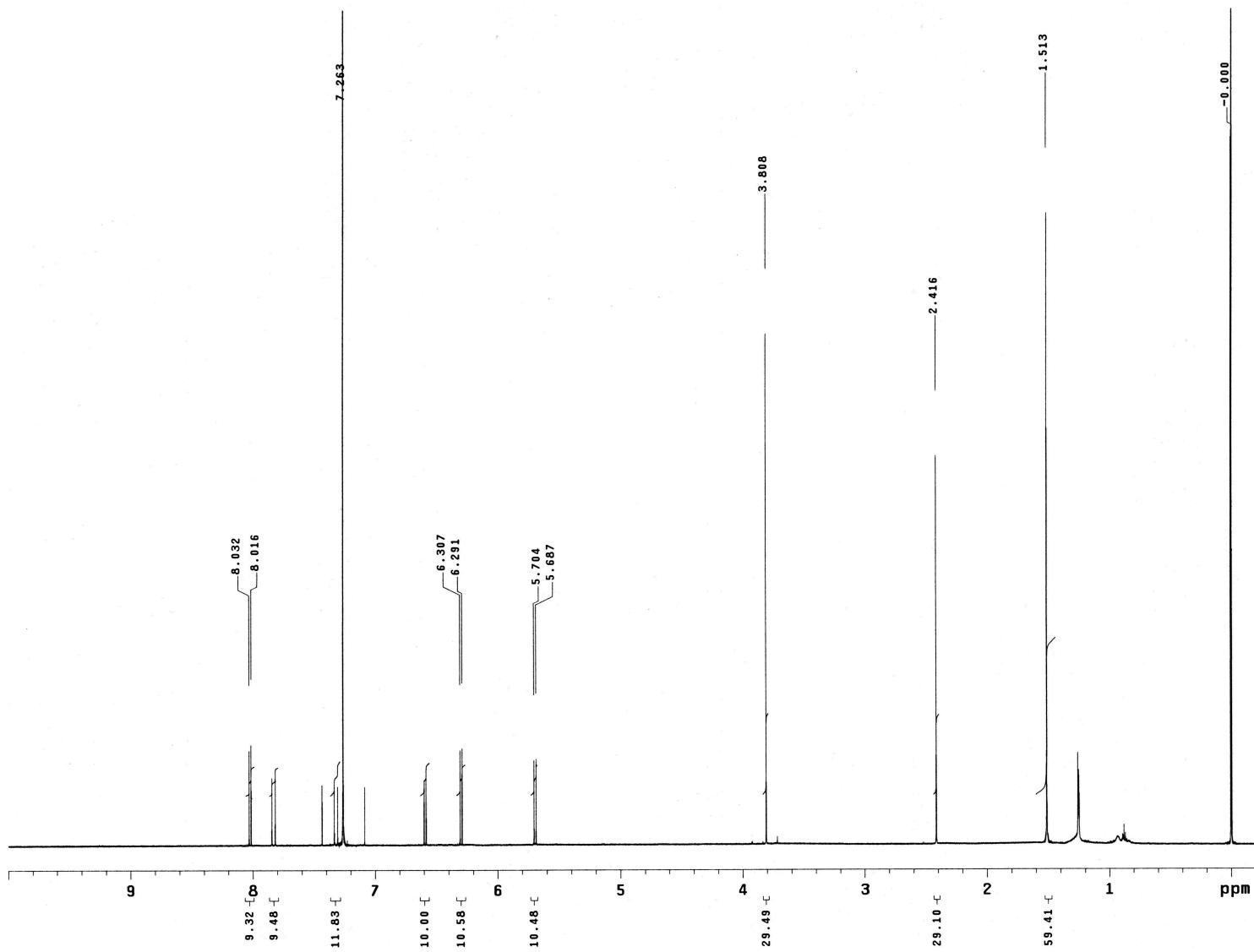


Figure S5. ^1H NMR spectrum (CDCl_3 , 600 MHz) of **2**.

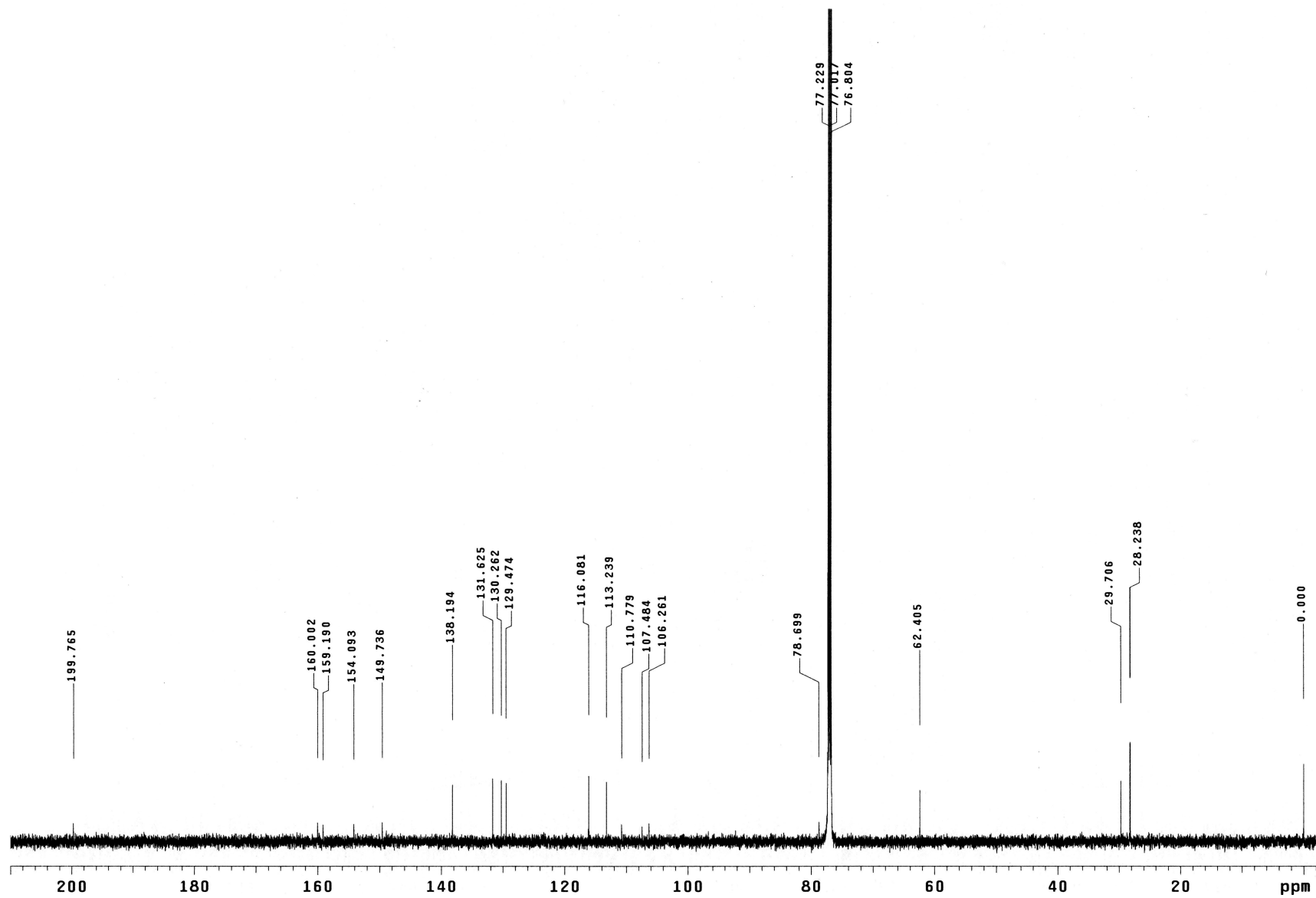


Figure S6. ¹³C NMR spectrum (CDCl₃, 150 MHz) of 2.

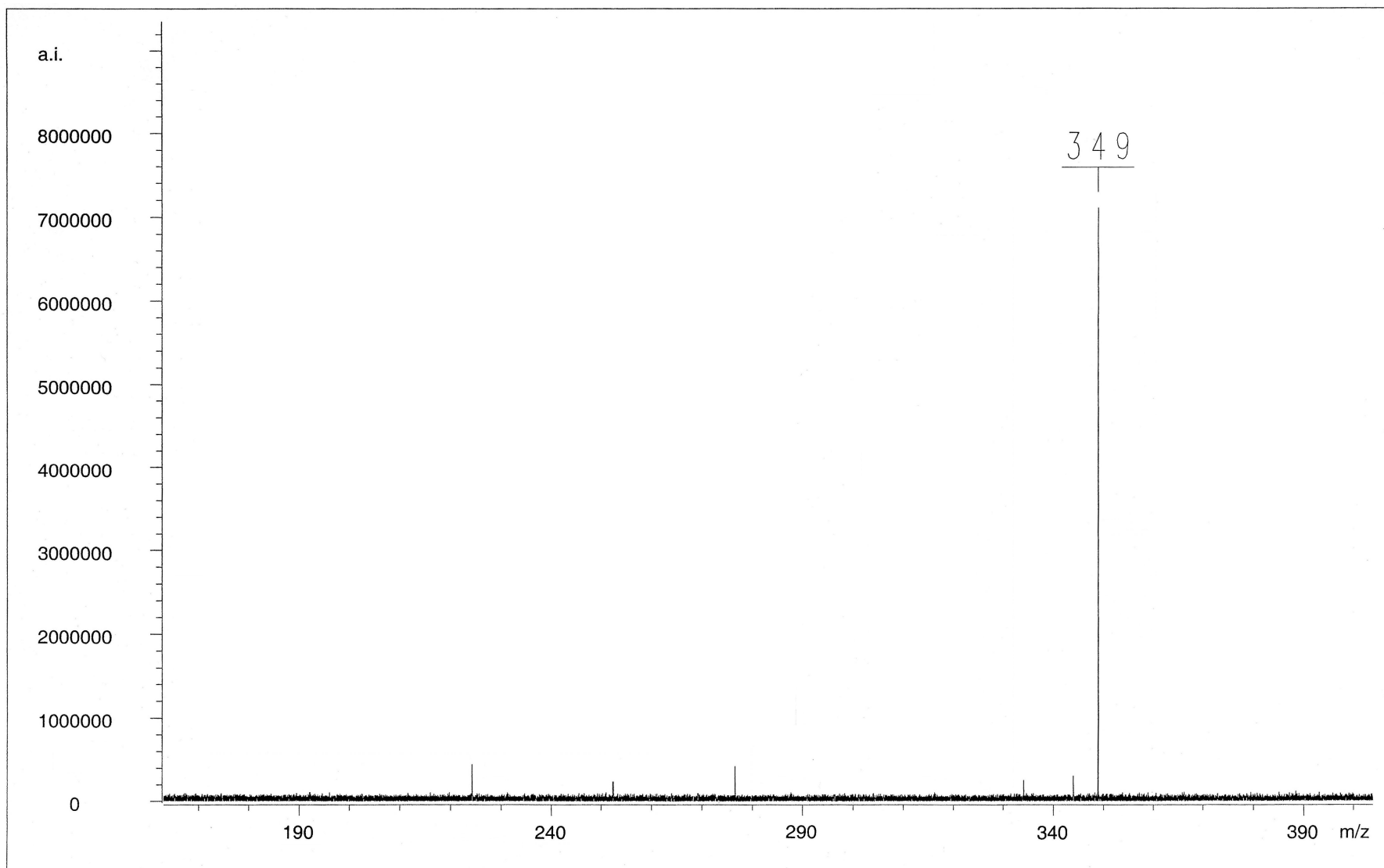


Figure S7. ESI-MS spectrum of **2**.

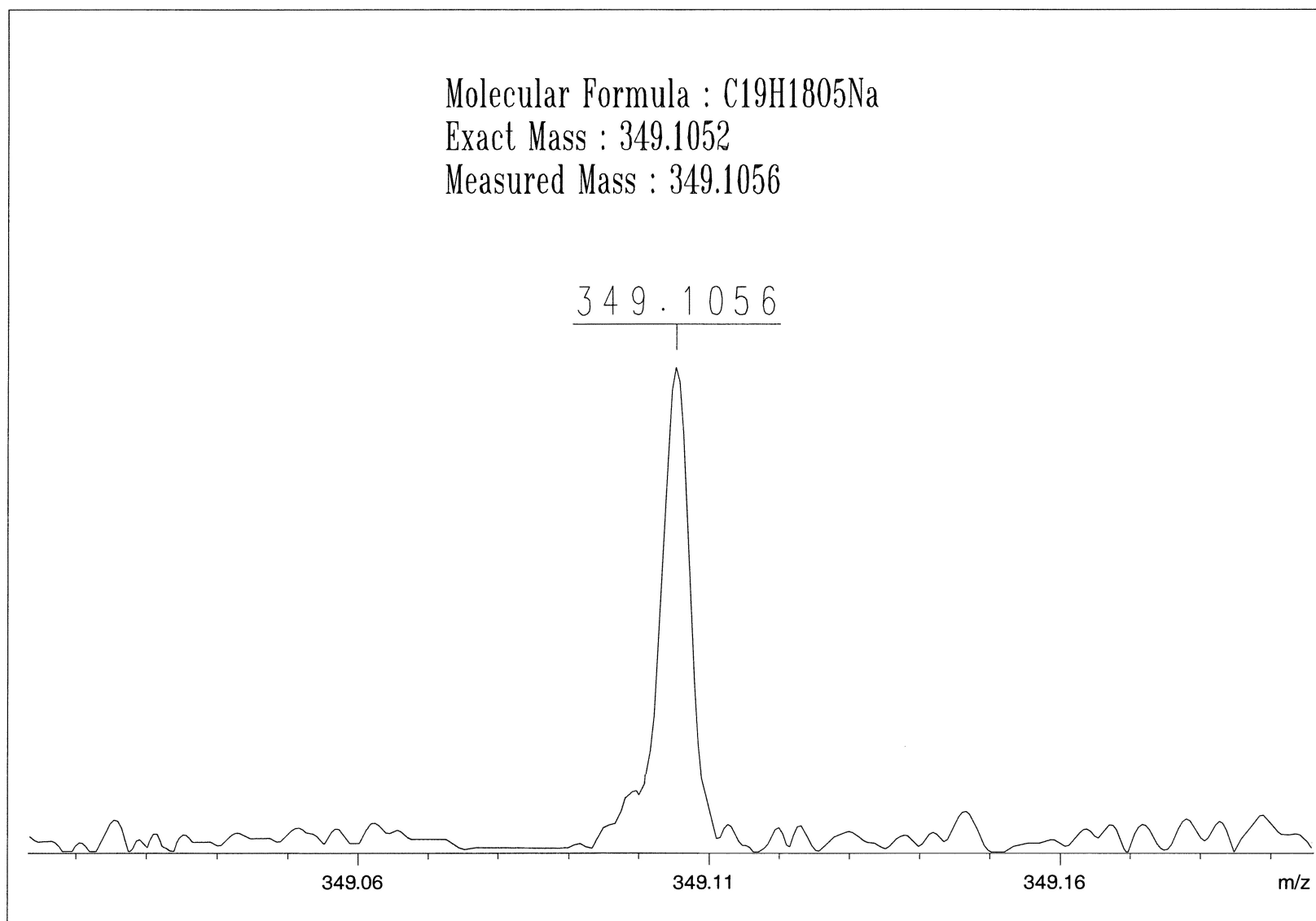


Figure S8. HR-ESI-MS spectrum of **2**.

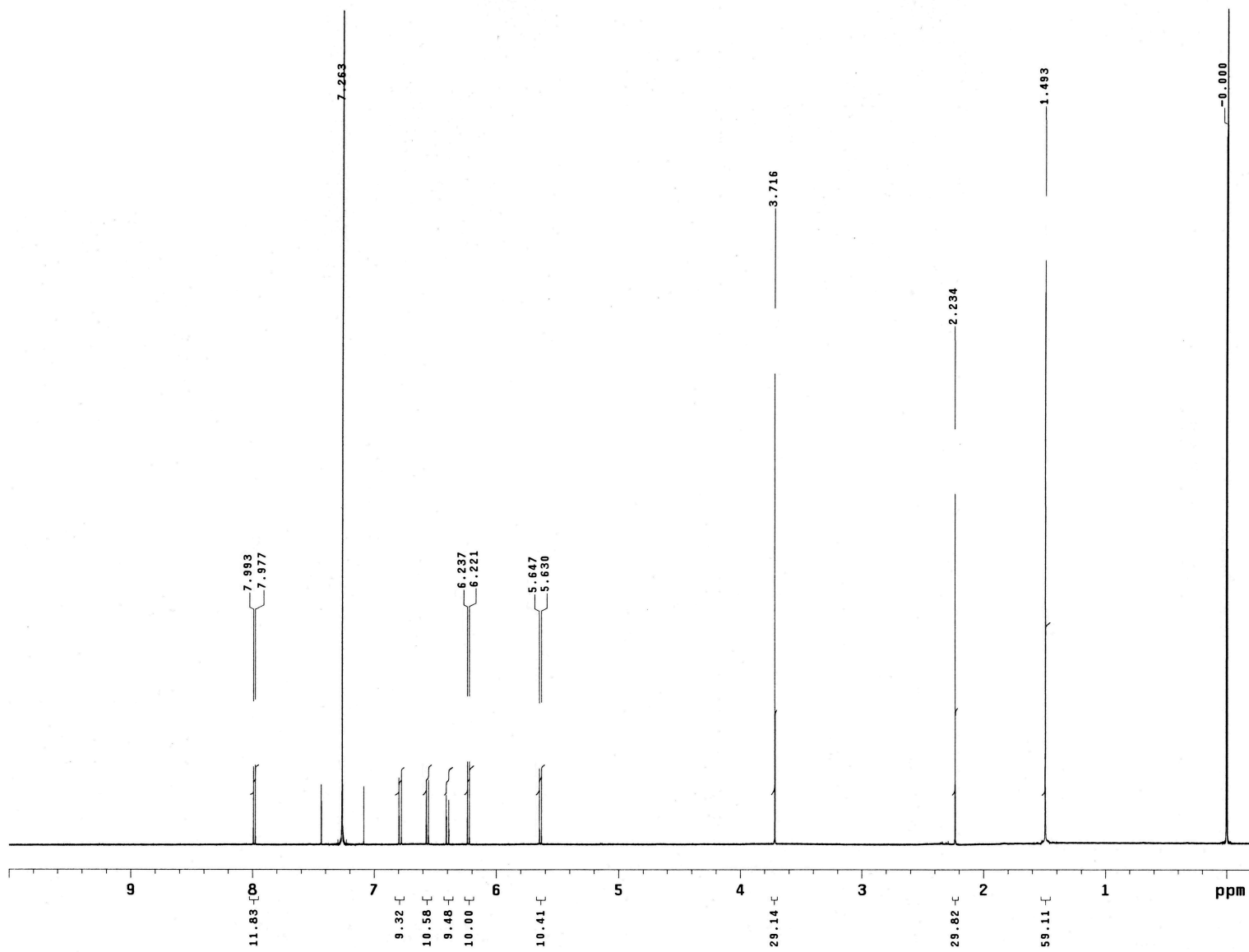


Figure S9. ^1H NMR spectrum (CDCl_3 , 600 MHz) of **3**.

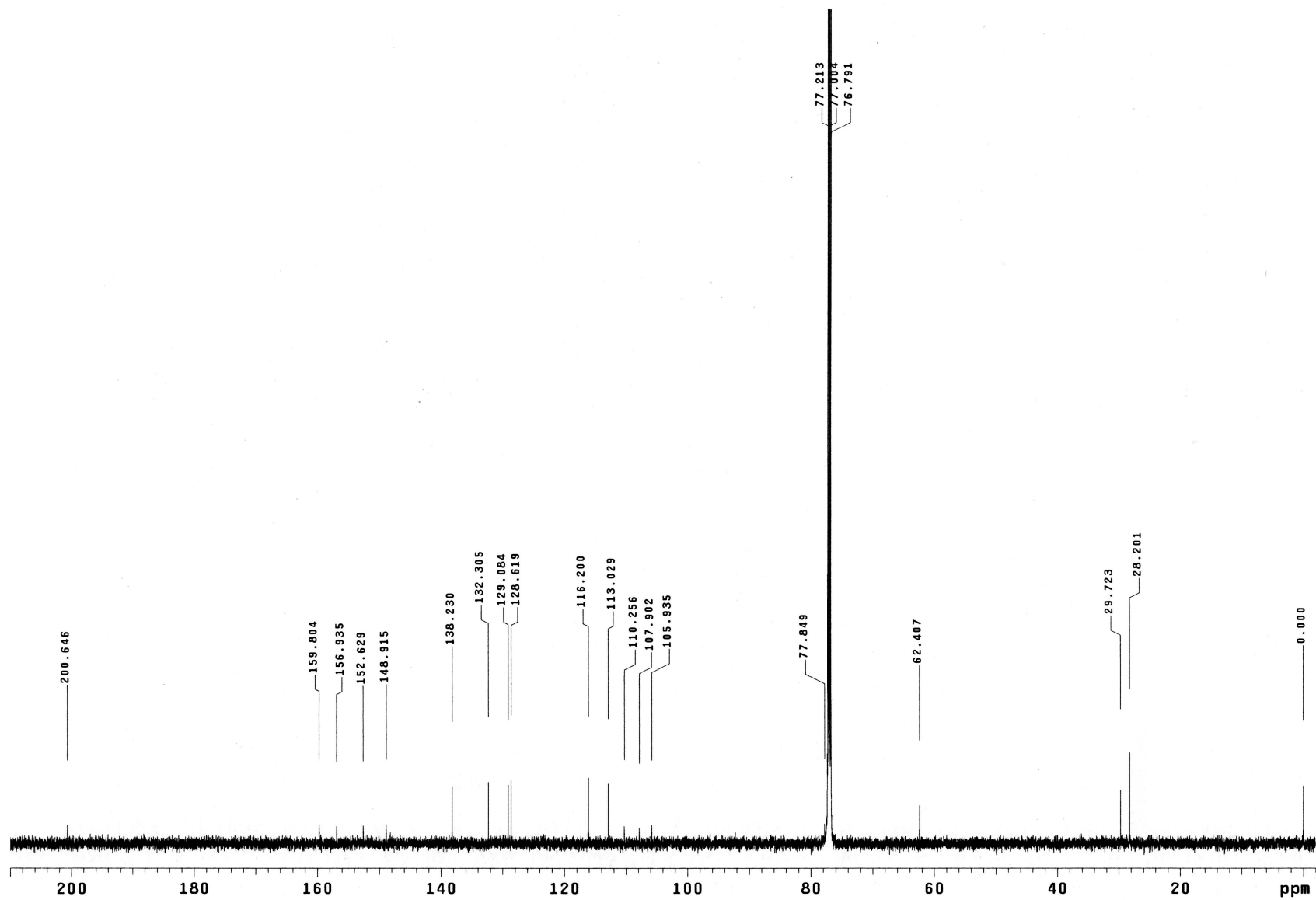


Figure S10. ¹³C NMR spectrum of **3** (CDCl₃, 150 MHz).

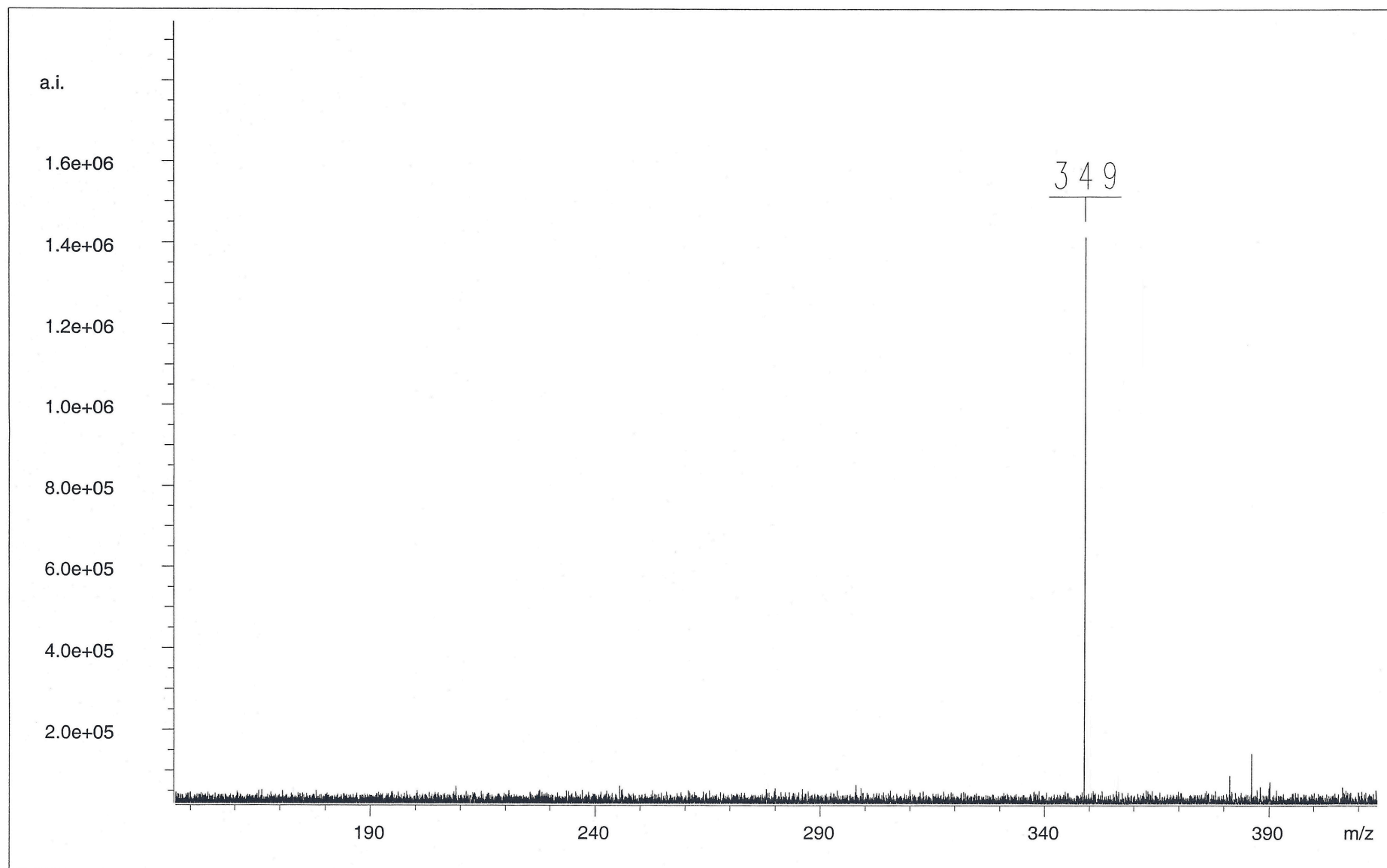


Figure S11. ESI-MS spectrum of **3**.

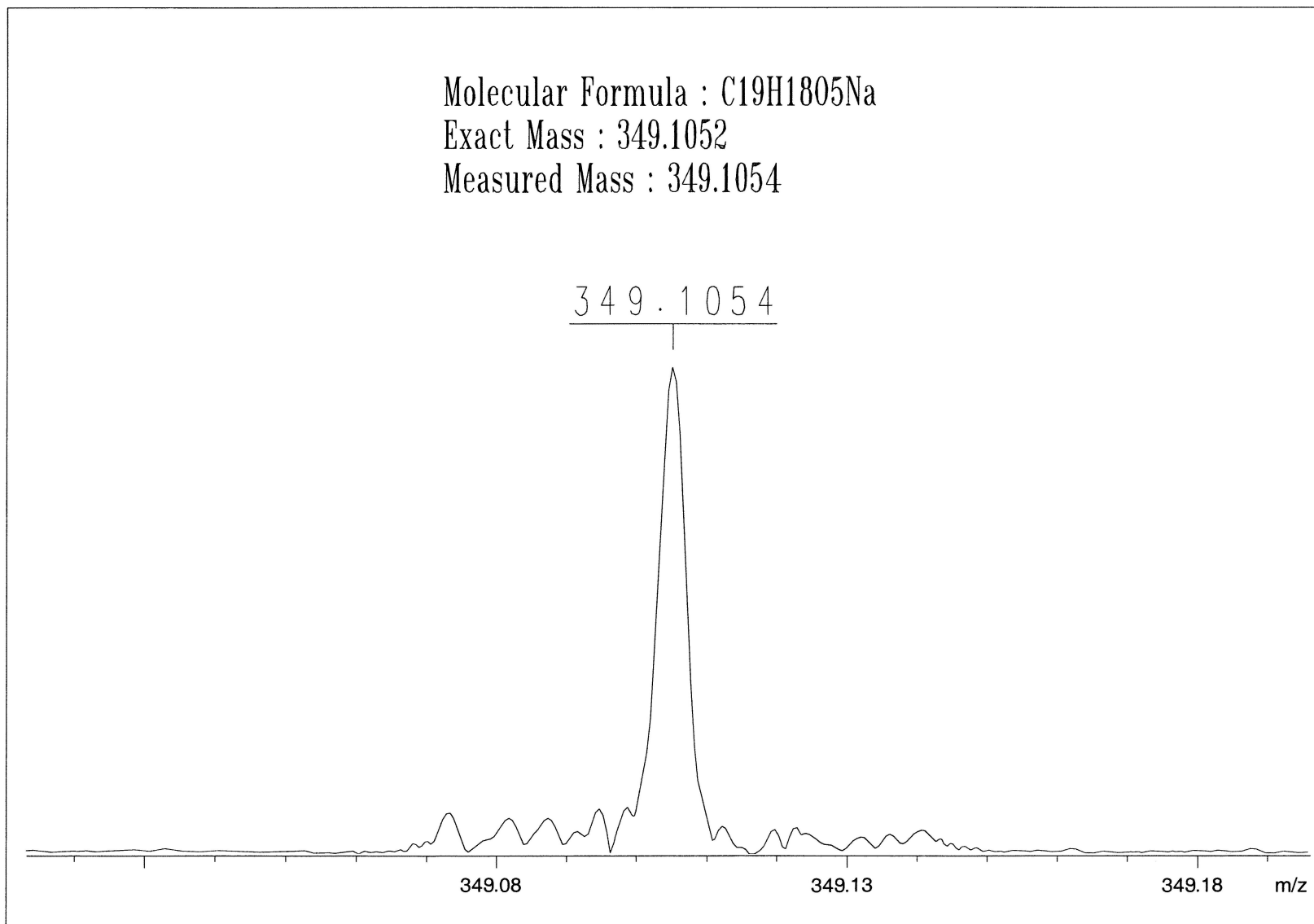


Figure S12. HR-ESI-MS spectrum of **3**.