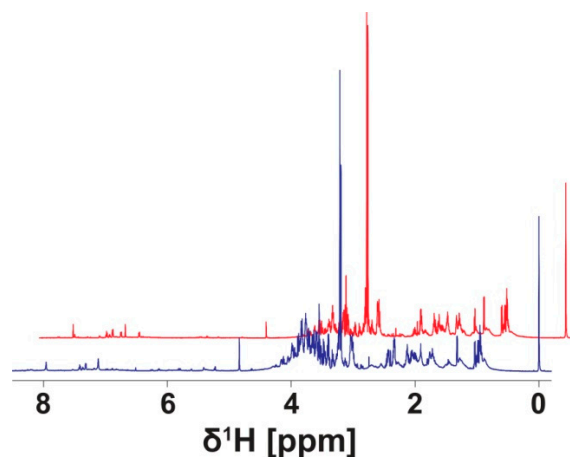
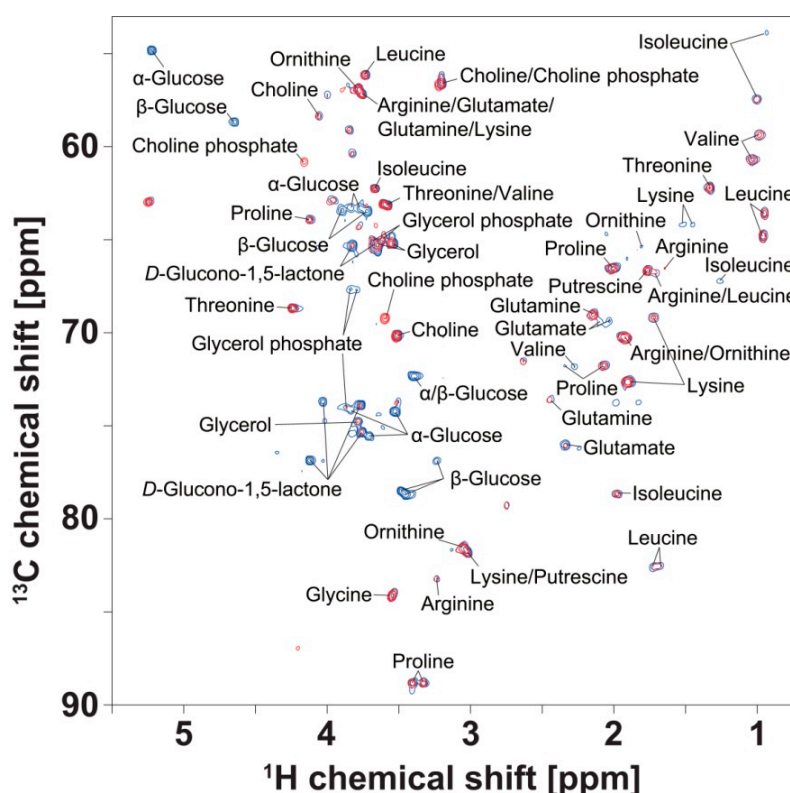


# Supplementary Materials: Cannibalism Affects Core Metabolic Processes in *Helicoverpa armigera* Larvae—A 2D NMR Metabolomics Study

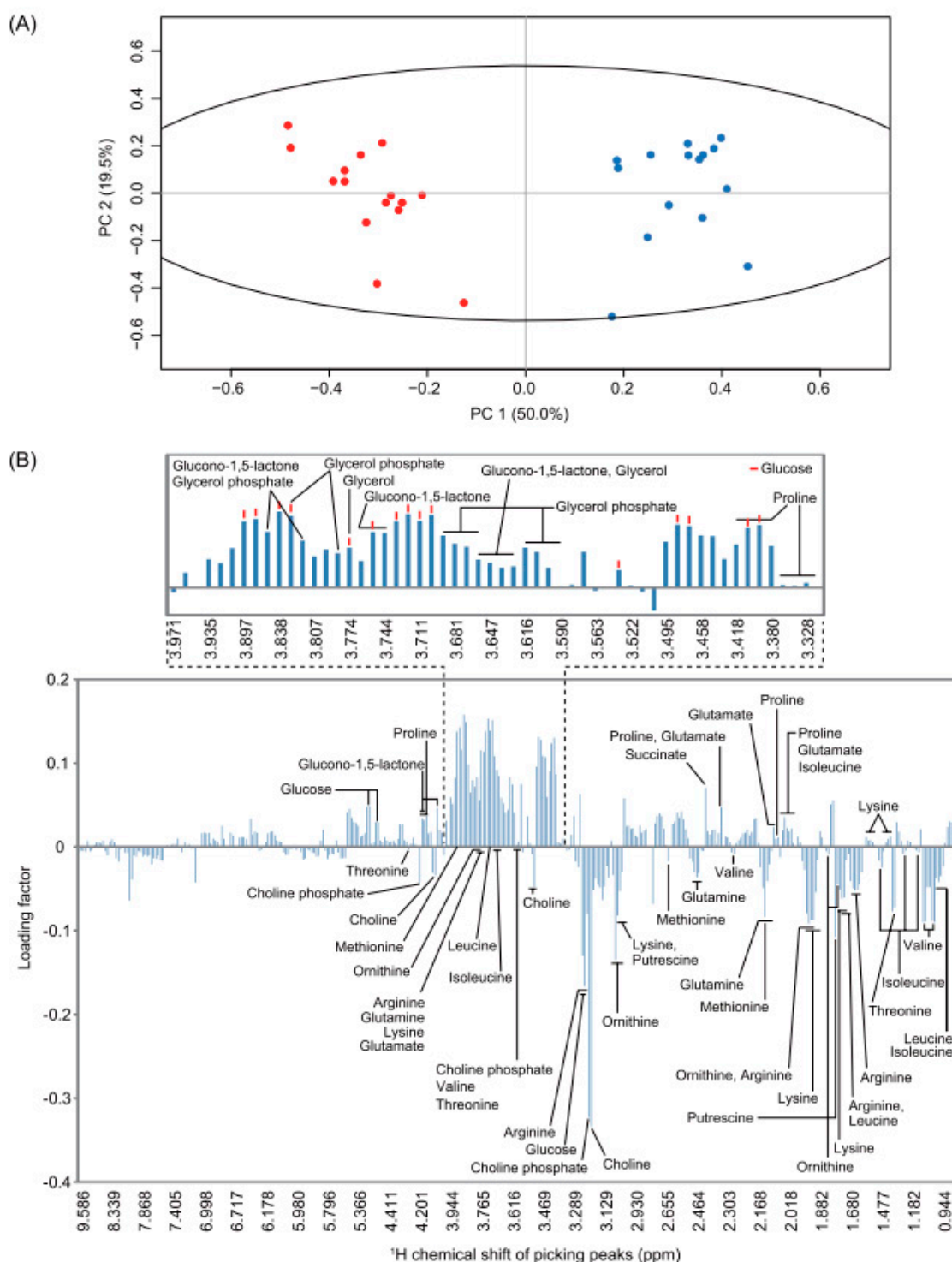
Fredd Vergara, Amiu Shino and Jun Kikuchi



**Figure S1.** Representative  $^1\text{H}$  spectra. Cannibals (red) and herbivores (blue) are offset to facilitate visualization.



**Figure S2.** Representative  $^1\text{H}$ - $^{13}\text{C}$  HSQC spectra. Cannibals (red) and herbivores (blue) signals are overlaid for direct comparison. Notice that as a consequence of the narrow spectral width in the indirect dimension (carbon), signals of some metabolites are aliased (offset) 40 ppm (see Materials and Methods section).



**Figure S3.** PCA score plot of peak-aligned  $^1\text{H}$  spectra (A). D<sub>2</sub>O extracts of herbivore (blue dots) and cannibal (red dots) *Helicoverpa armigera* larvae formed two distinct groups as in  $^1\text{H}$ - $^{13}\text{C}$  HSQC ROIs (Figure 3). Notice that  $^1\text{H}$  and  $^1\text{H}$ - $^{13}\text{C}$  HSQC spectra were obtained from the same larval extracts. PCA-loading plot of peak-aligned  $^1\text{H}$  spectra (B).

**Table S1.** List of candidate metabolites by matching of the  $^1\text{H}$  and  $^{13}\text{C}$  chemical shifts (obtained from HSQC spectra) using SpinAssign and confirmed by comparison with the databases HMDB and BRMB. Notice that as a consequence of spectral aliasing, some signals appear offset by 40 ppm. ROIs used to produce Figures 2–6 are highlighted in green.

**Table S2.** Matrix of integrals obtained by batch integration of the 135 ROIs defined with rNMR on the  $^1\text{H}$ - $^{13}\text{C}$  HSQC spectra.

**Table S3.** Matrix of integrals obtained after binning the  $^1\text{H}$  spectra.