

Lavandula austroapennina (Lamiaceae): Getting Insights into Bioactive Polyphenols of a Rare Italian Endemic Vascular Plant

Supplementary Materials:

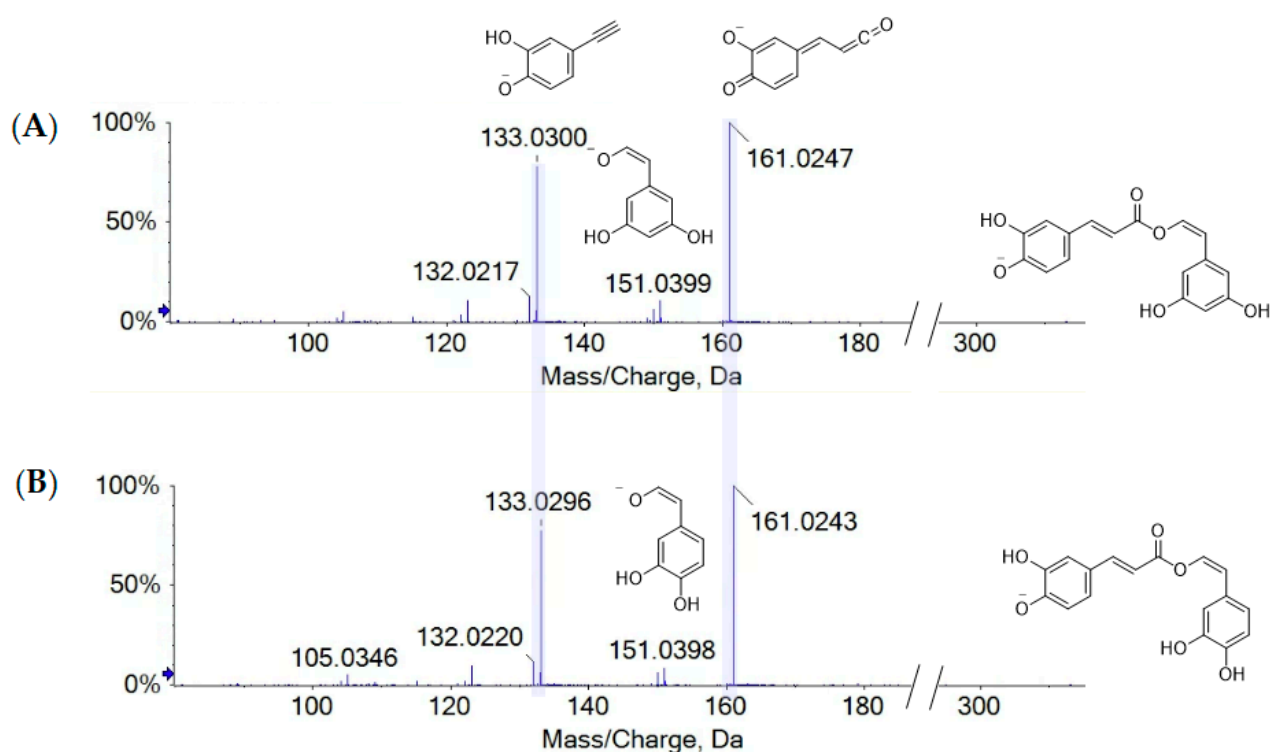


Figure S1. TOF-MS/MS spectra of compound 61 (A) and 63 (B).

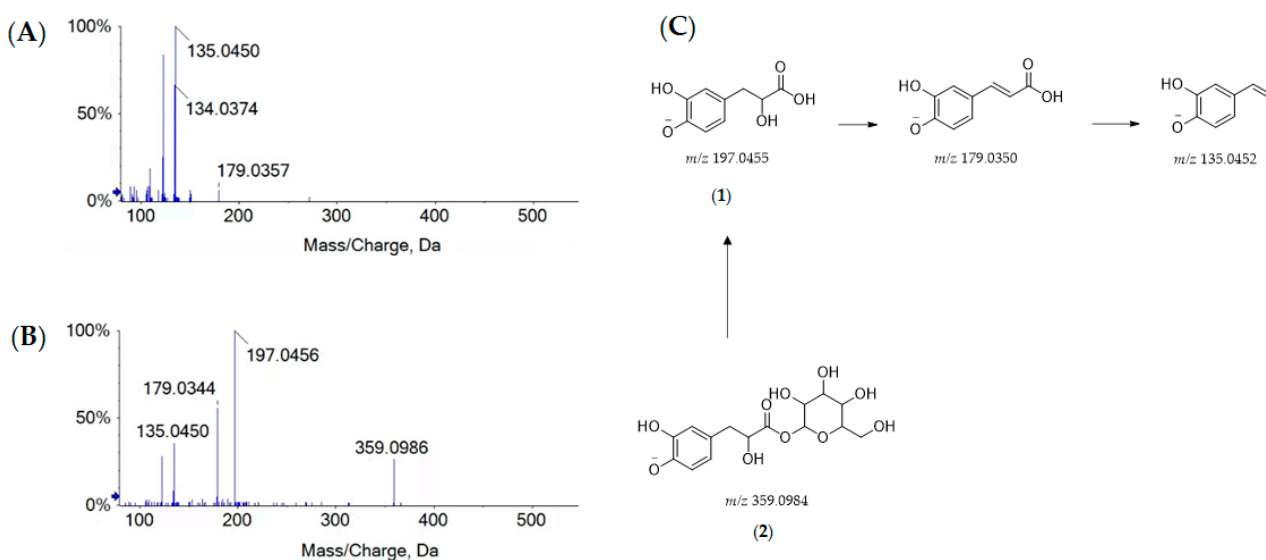


Figure S2. TOF-MS/MS spectra of compound 1 (A) and 2 (B) and their hypothetical fragmentation (C). Theoretical m/z values are reported below each structure.

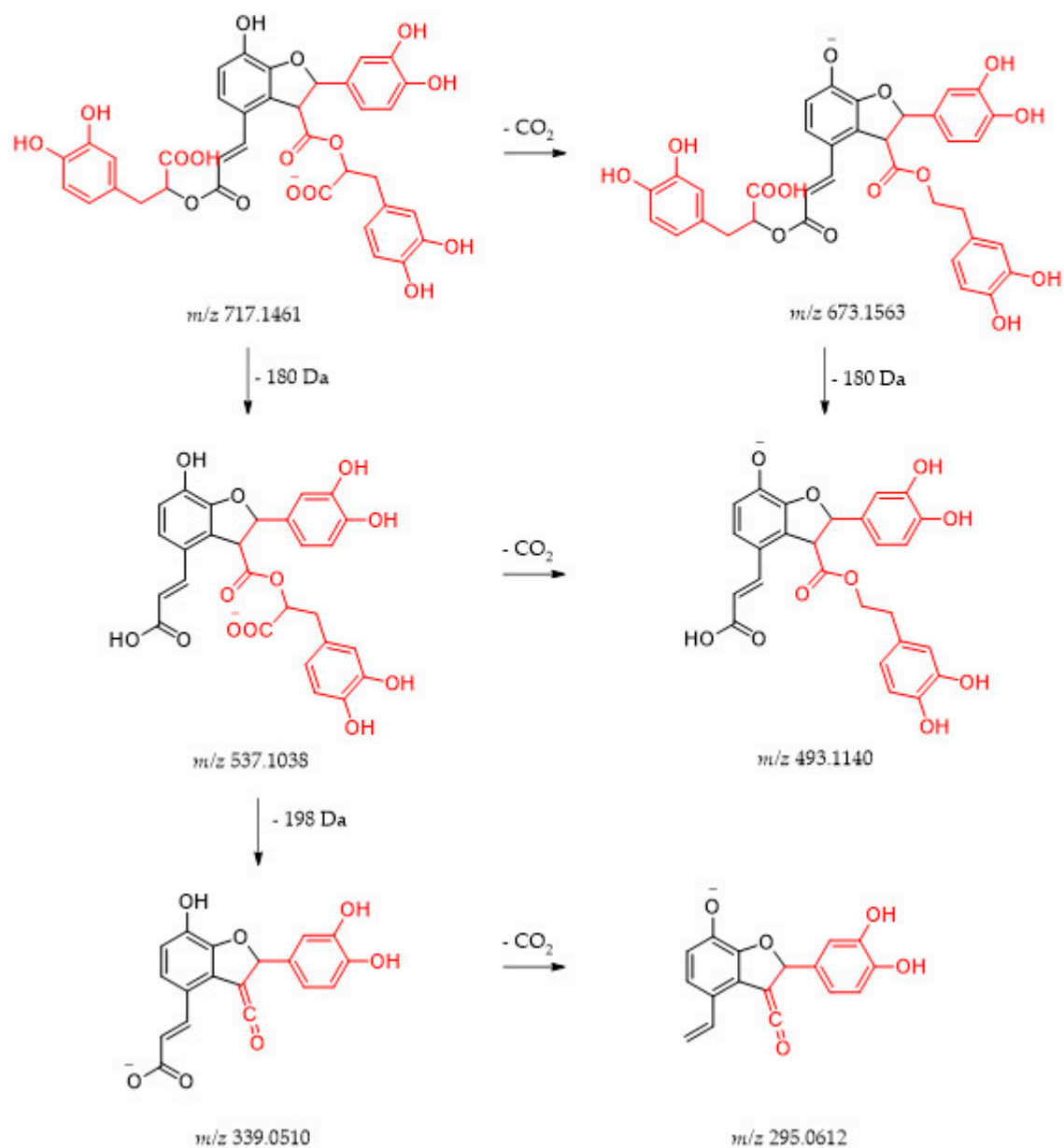
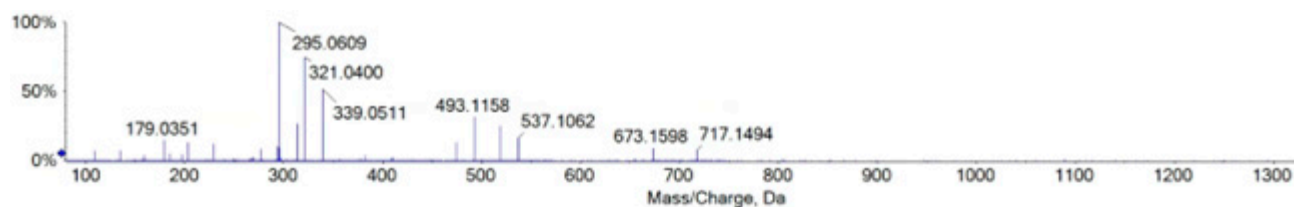


Figure S3. TOF-MS/MS spectrum of salvianolic acid B (43) and its hypothesized fragmentation pathway (the three danshensu units are highlighted in red color). Theoretical m/z values are reported below each structure.

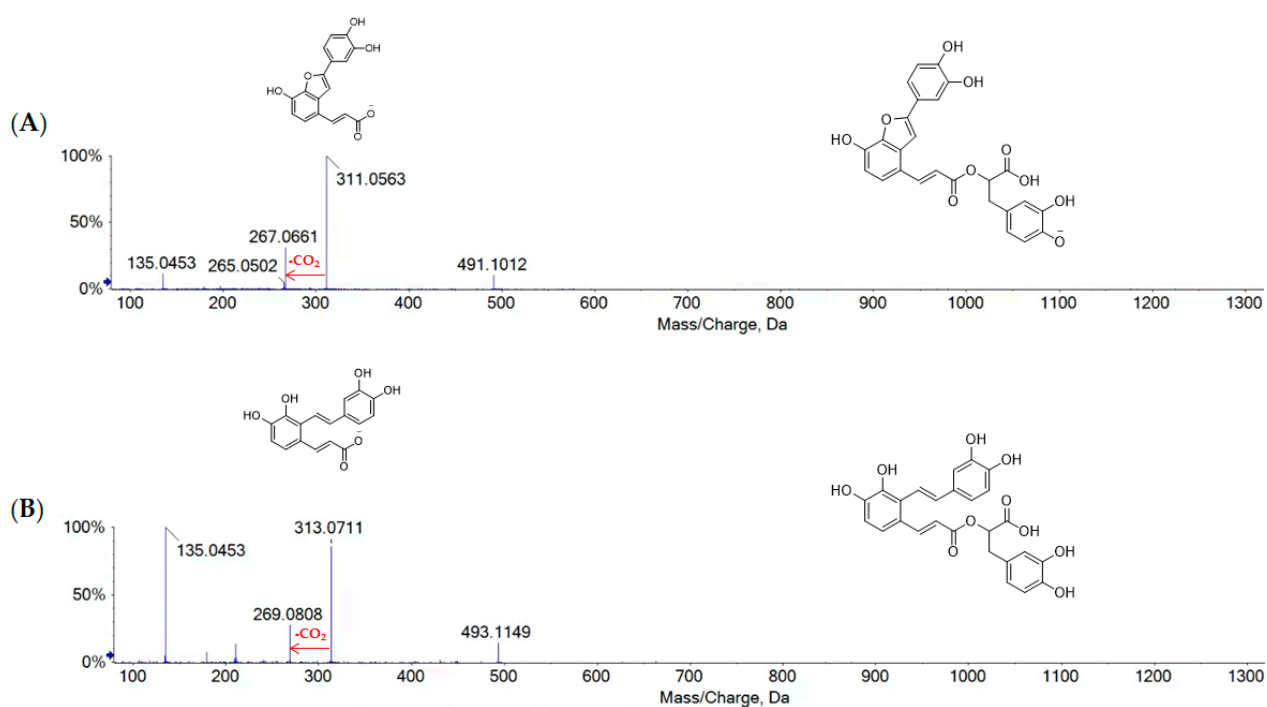


Figure S4. TOF-MS/MS spectra of compounds identified as (A) salvianolic acid C (57) and (B) salvianolic acid A (67).

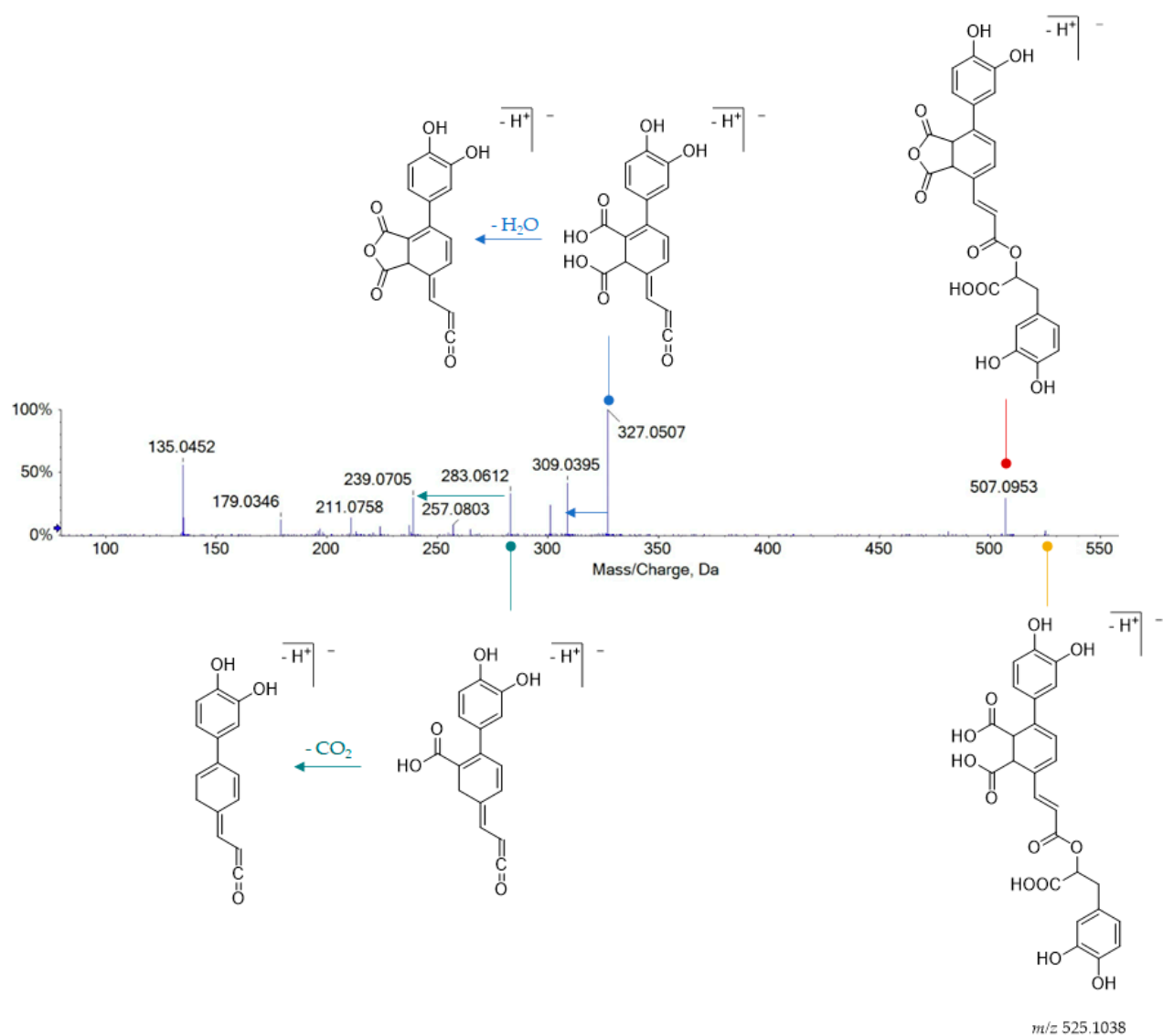


Figure S5. TOF-MS/MS spectrum of compound 48. The hypothesized pivotal structures are also reported.

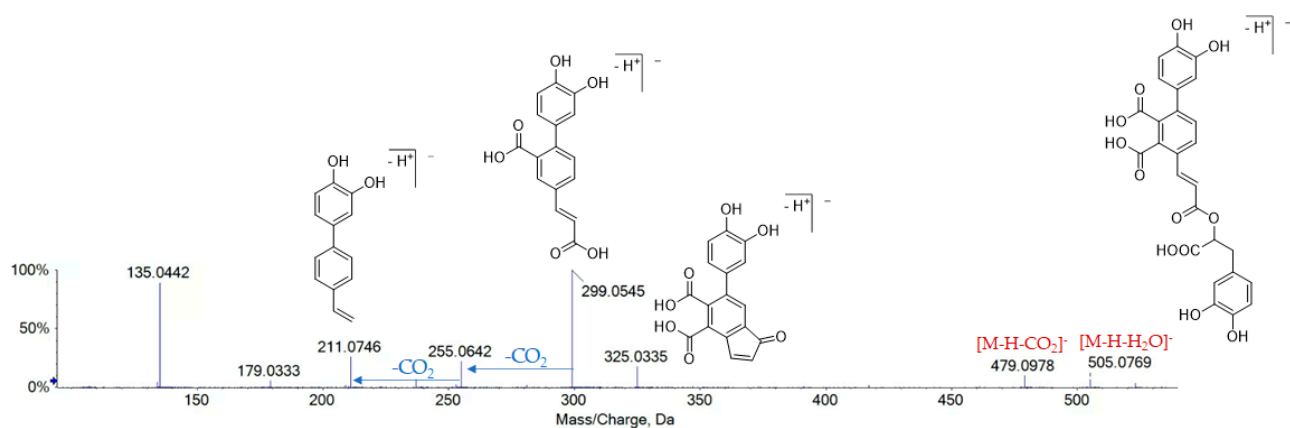


Figure S6. TOF-MS/MS spectrum of compound 53. The hypothesized pivotal structures are also reported.

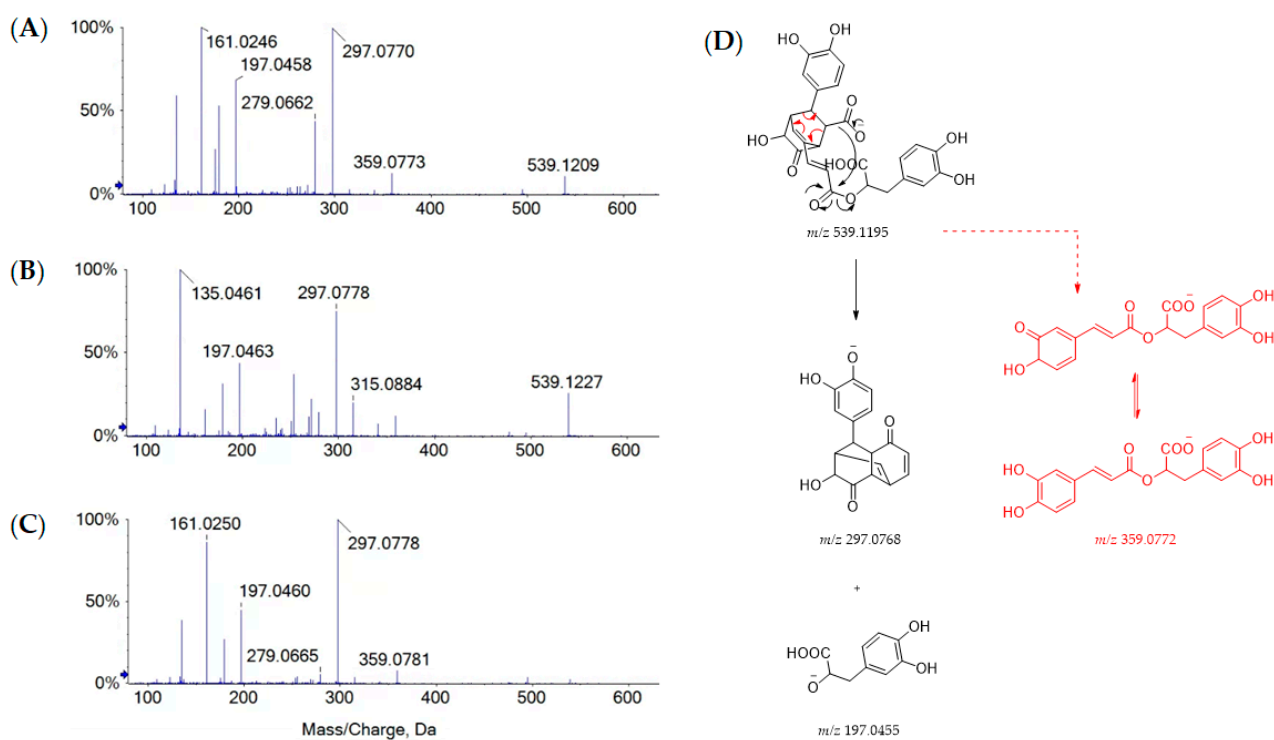


Figure S7. TOF-MS/MS spectra of compounds 30 (A), 31 (B), and 36 (C). The hypothesized pivotal structures are reported (D). Theoretical m/z values are reported below each structure.

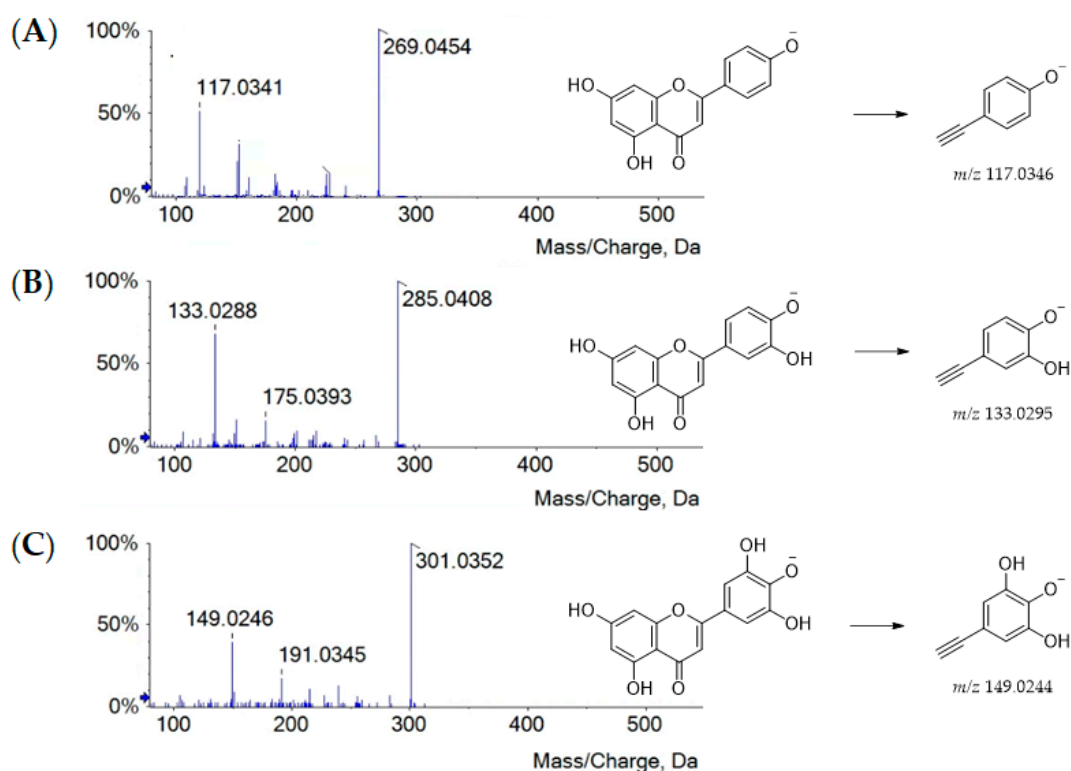


Figure S8. TOF-MS/MS spectra of compounds 60 (A), 56 (B), and 50 (C). The hypothesized pivotal structures are reported. Theoretical m/z values are reported below each structure.

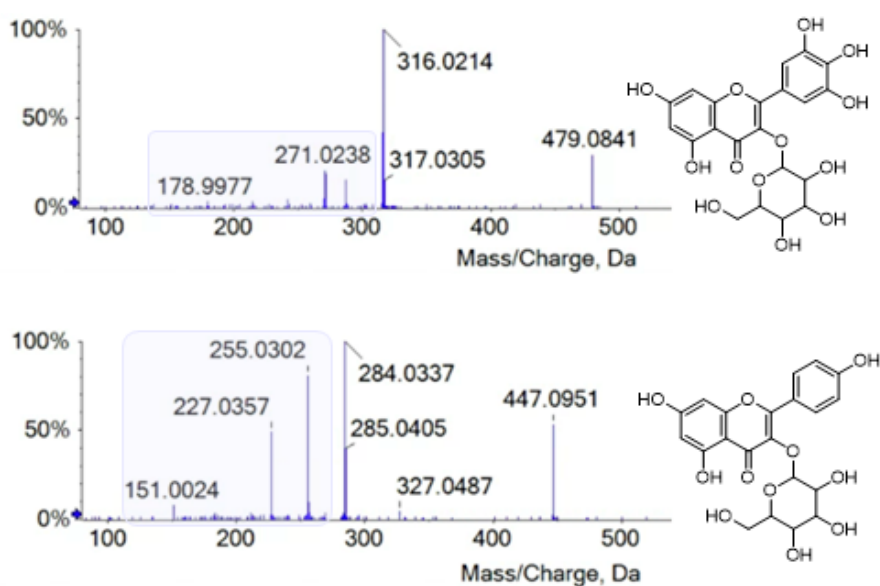


Figure S9. TOF-MS/MS spectra of compounds 24 (at m/z 479.0841) and 42 (at m/z 447.0951). Coloured boxes denote pivotal ions for flavonol skeleton identification.

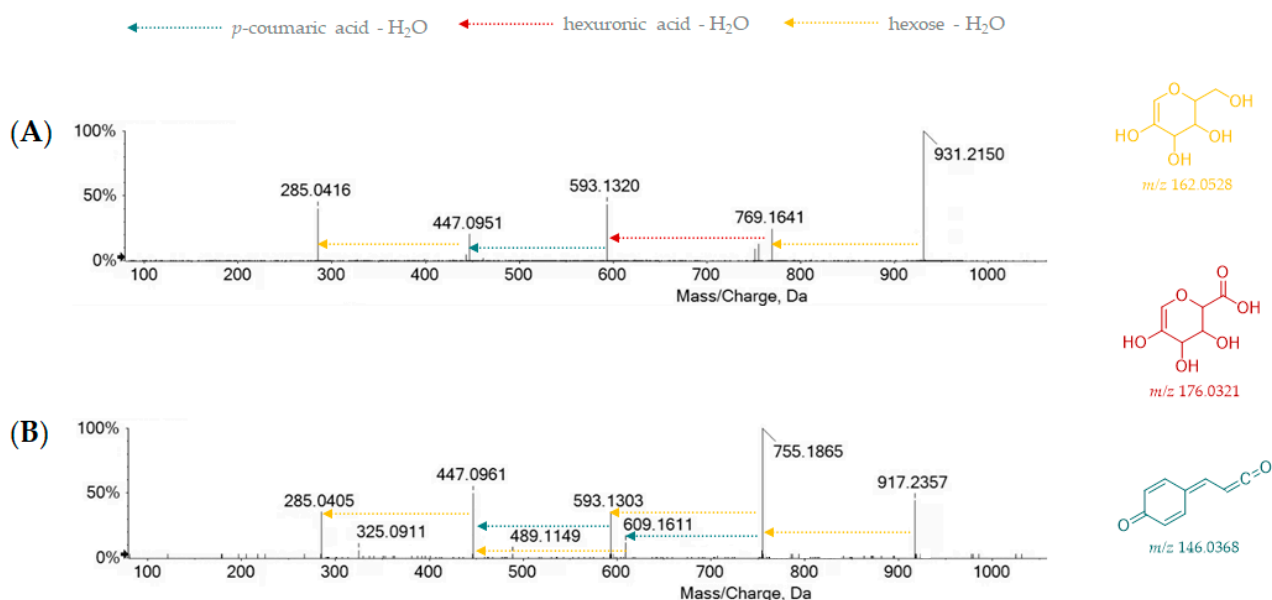


Figure S10. TOF-MS/MS spectra of compounds **46** (A), **49** (B). Colored arrows highlight the different building blocks of the saccharidic units, sequentially lost as neutral dehydrated form.

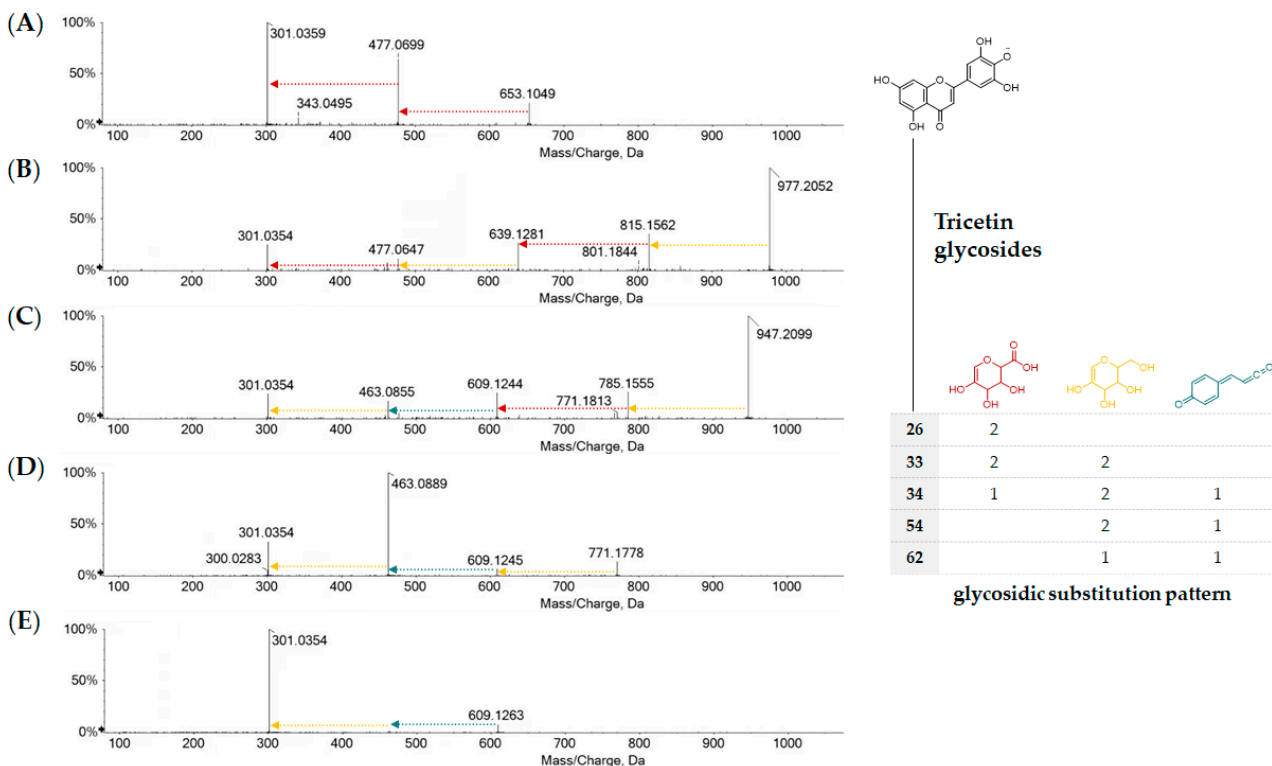


Figure S11. TOF-MS/MS spectra of compounds **26** (A), **33** (B), **34** (C), **54** (D), and **62** (E). A schematic representation of the glycosidic substitution pattern is also reported.