

Supplementary Materials

Figure S1A

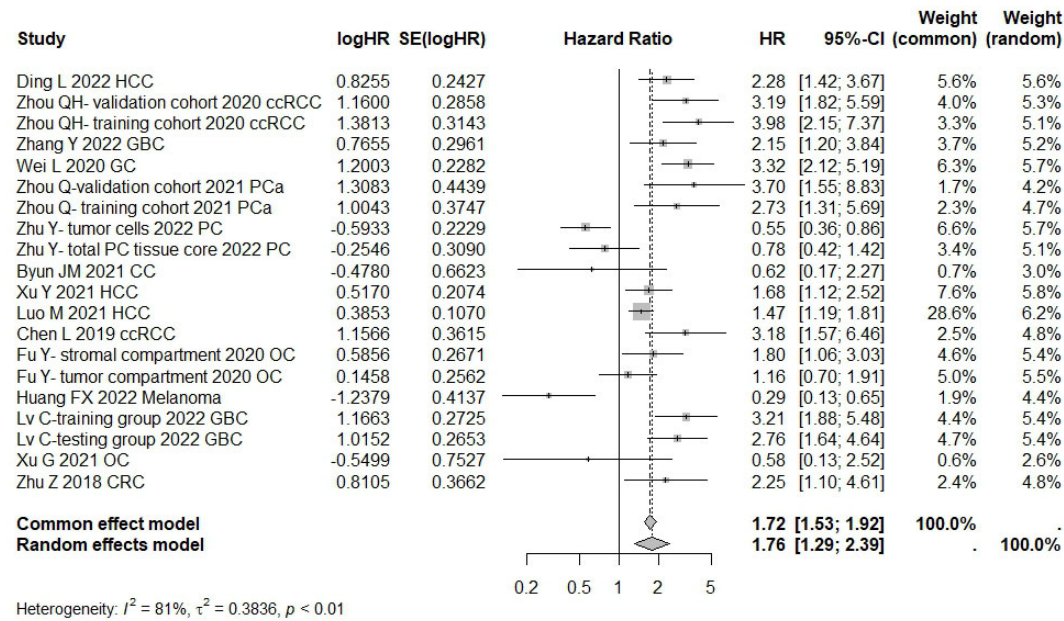


Figure S1A Forest plot of studies evaluating HRs of high HHLA2 expression and OS univariate in solid tumors. High expression of HHLA2 was associated with shorter OS (HR=1.76 95% CI: 1.29-2.39).

Figure S1B

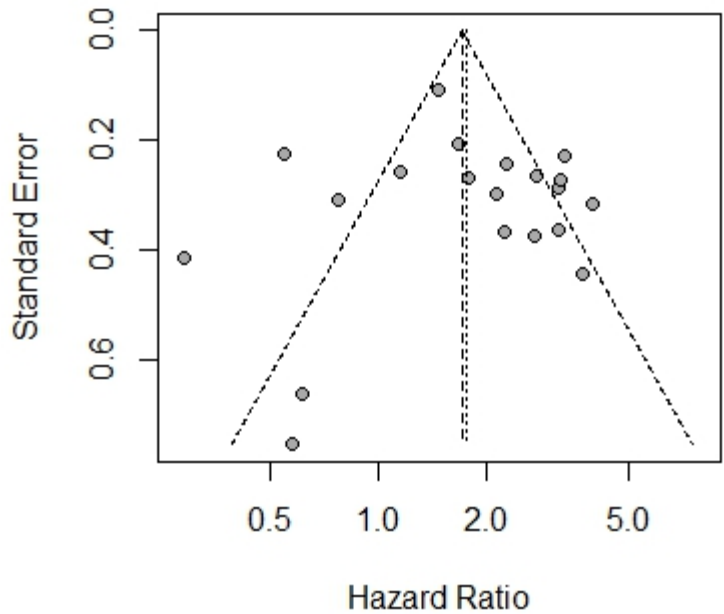


Figure S1B Funnel plots for evaluating potential publication bias on the association between HHLA2 high expression and overall survival in solid tumors. OS univariate.

Figure S1C

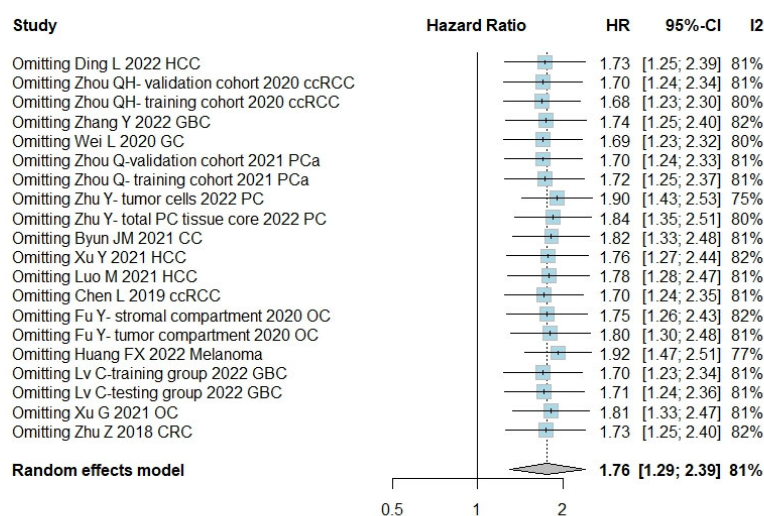


Figure S1C One-leave metaanalysis for investigating the effects of particular studies on the association between HHLA2 expression and overall survival in solid tumors. OS univariate.

Figure S2A

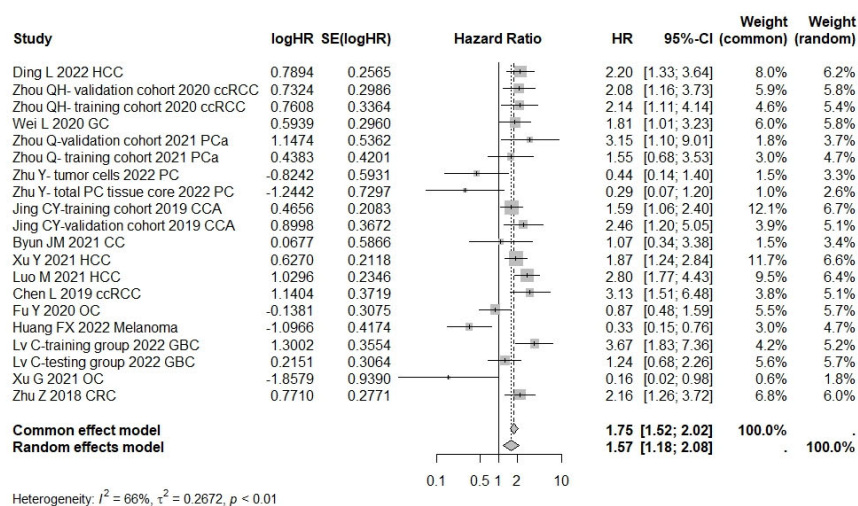


Figure S2A Forest plot of studies evaluating HRs of high HHLA2 expression and OS in solid tumors. OS multivariate analysis. High expression of HHLA2 was associated with shorter OS (HR=1.57 95% CI: 1.18-2.08).

Figure S2B

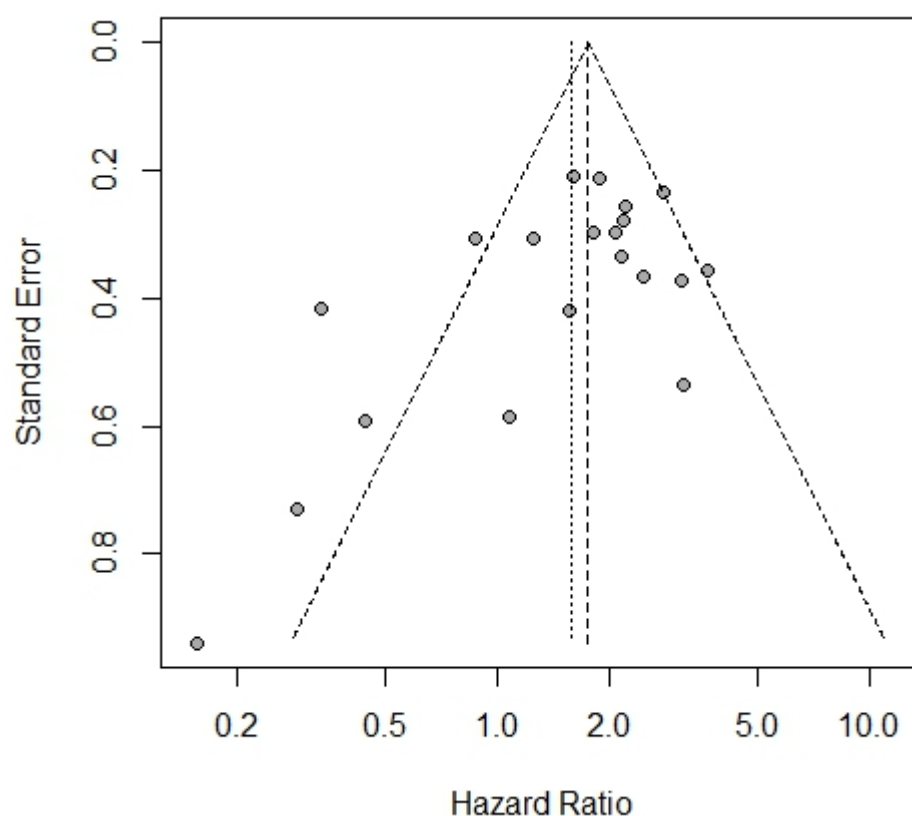


Figure S2B Funnel plots for evaluating potential publication bias on the association between HHLA2 high expression and overall survival in solid tumors. OS multivariate analysis.

Figure S2C

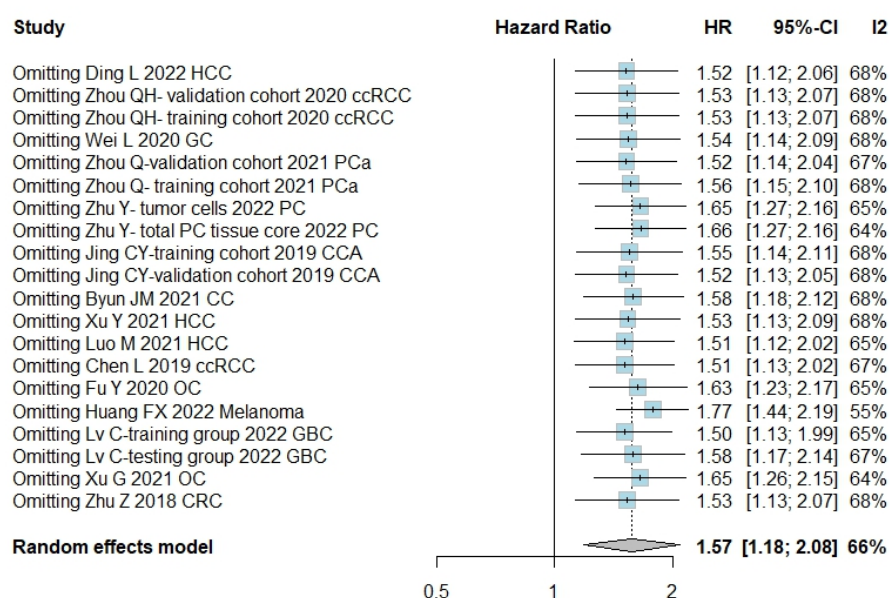


Figure S2C One-leave metaanalysis for investigating the effects of particular studies on the association between HHLA2 expression and overall survival in solid tumors. OS multivariate. High expression of HHLA2 was associated with poor OS (HR= 1,57, 95%CI: 1.18–2.08).

Figure S3A

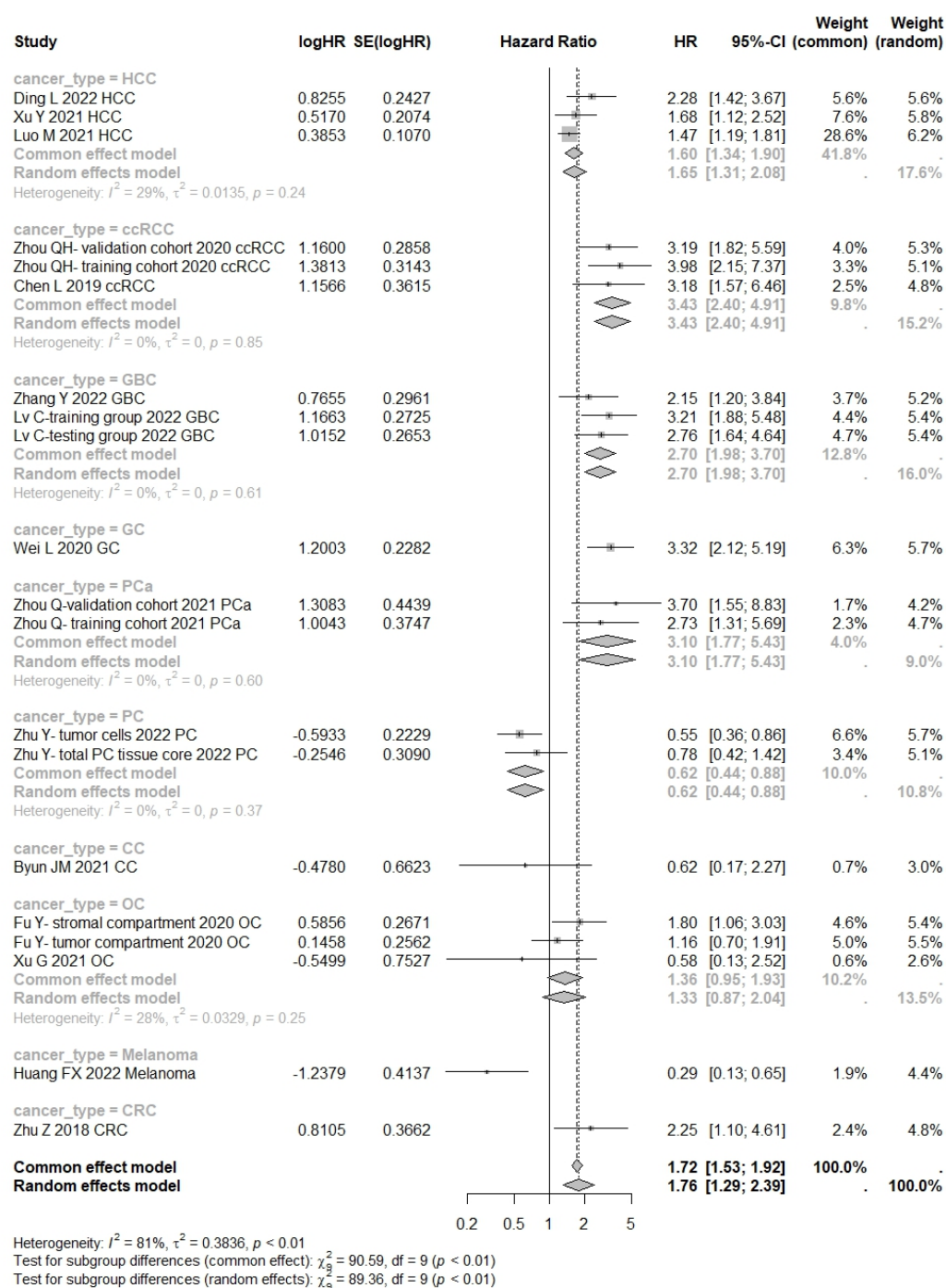


Figure S3A Subgroup analysis for the relationship between HHLA2 and overall survival. Grouped by different cancers. Univariate analysis. High expression of HHLA2 was associated with poor OS in hepatocellular carcinoma (HR = 1.60, 95% CI: 1.34-1.90), clear cell renal cell carcinoma (HR = 3.43, 95% CI: 2.40-4.91), gallbladder cancer (HR = 2.70, 95% CI: 1.98-3.70), prostate carcinoma (HR = 3.10, 95% CI: 1.77-5.43), apart from pancreatic cancer (HR = 0.62, 95% CI: 0.44-0.88). There was no significant relation between expression of HHLA2 and OS in ovarian cancer.

Figure S3B

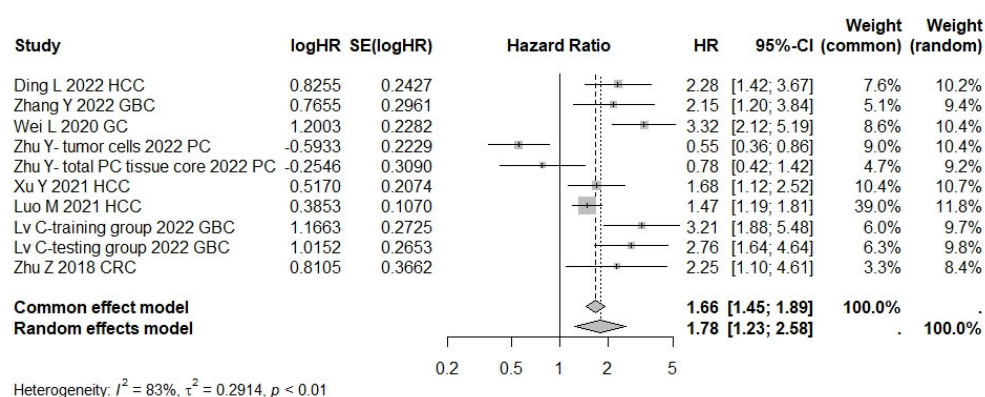


Figure S3B Forest plot of studies evaluating HRs of high HHLA2 expression and OS in gastrointestinal cancers. Univariate analysis. High expression of HHLA2 was associated with shorter OS (HR=1.78 95% CI: 1.23-2.58).

Figure S3C

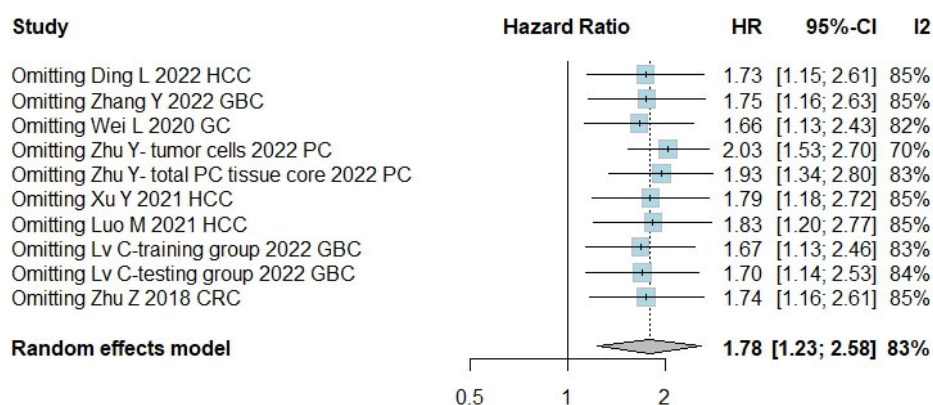


Figure S3C One-leave meta-analysis for investigating the effects of excluding particular studies from analysis on the relationship between high HHLA2 expression and OS in gastrointestinal cancers. High expression of HHLA2 was associated with poor OS (HR= 1.78, 95%CI: 1.23–2.58). Univariate analysis.



Figure S4A

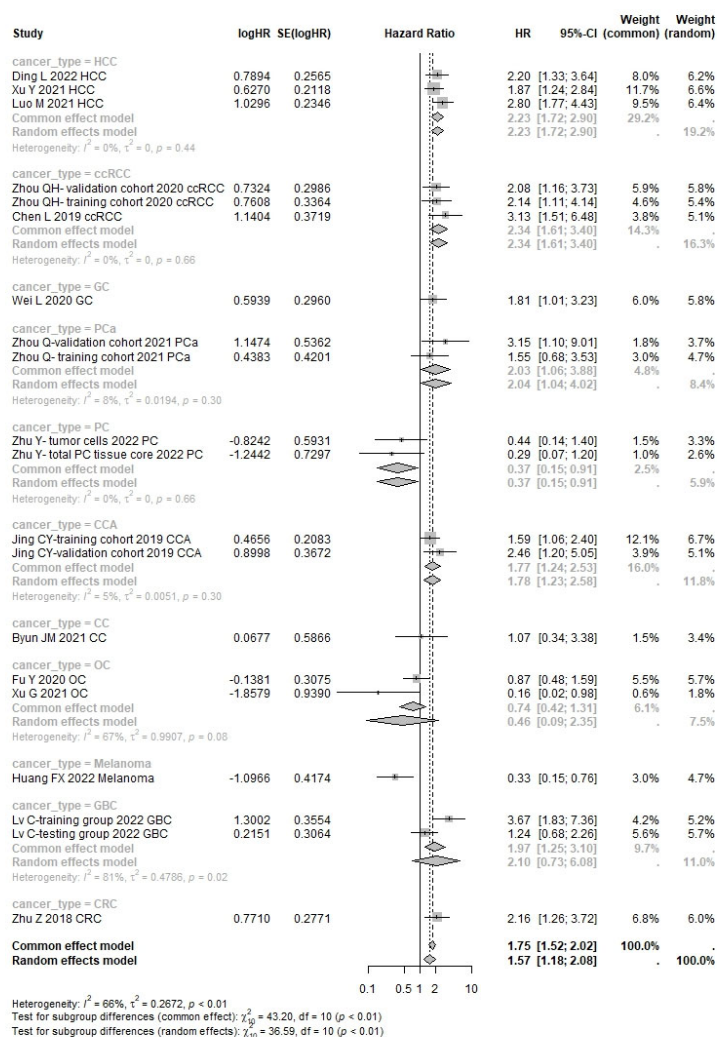


Figure S4A Subgroup analysis for the relationship between HHLA2 and overall survival. Grouped by different cancers. Multivariate analysis. High expression of HHLA2 was associated with poor OS in hepatocellular carcinoma (HR = 2.23, 95% CI: 1.72-2.90), clear cell renal cell carcinoma (HR = 2.34, 95% CI: 1.61-3.40), prostate carcinoma (HR = 2.03, 95% CI: 1.06-3.88), cholangiocarcinoma (HR = 1.77, 95% CI: 1.24-2.53), apart from pancreatic cancer (HR = 0.37, 95% CI: 0.15-0.91). There was no significant relation between expression of HHLA2 and OS in ovarian cancer and gallbladder cancer.

Figure S4B

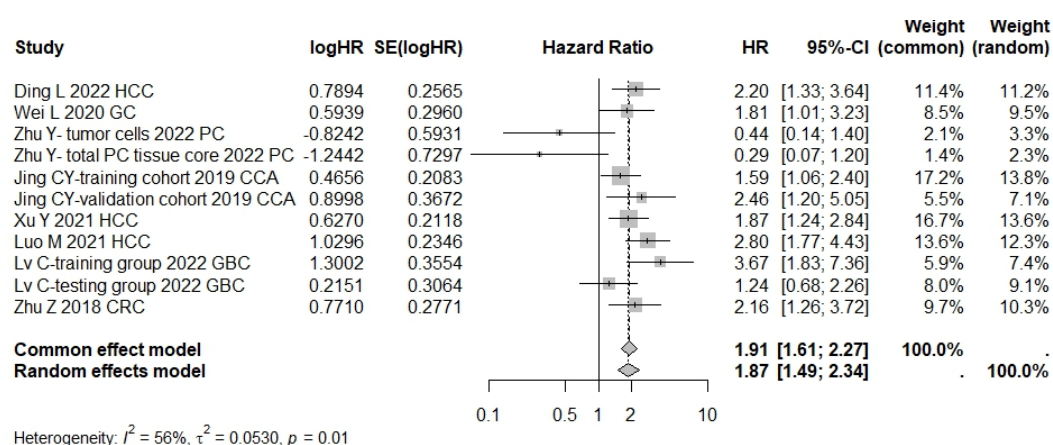


Figure S4B Forest plot of studies evaluating HRs of high HHLA2 expression and OS in gastrointestinal cancers. Multivariate analysis. High expression of HHLA2 was associated with poor OS (HR = 1.87, 95% CI: 1.49-2.34)

Figure S4C

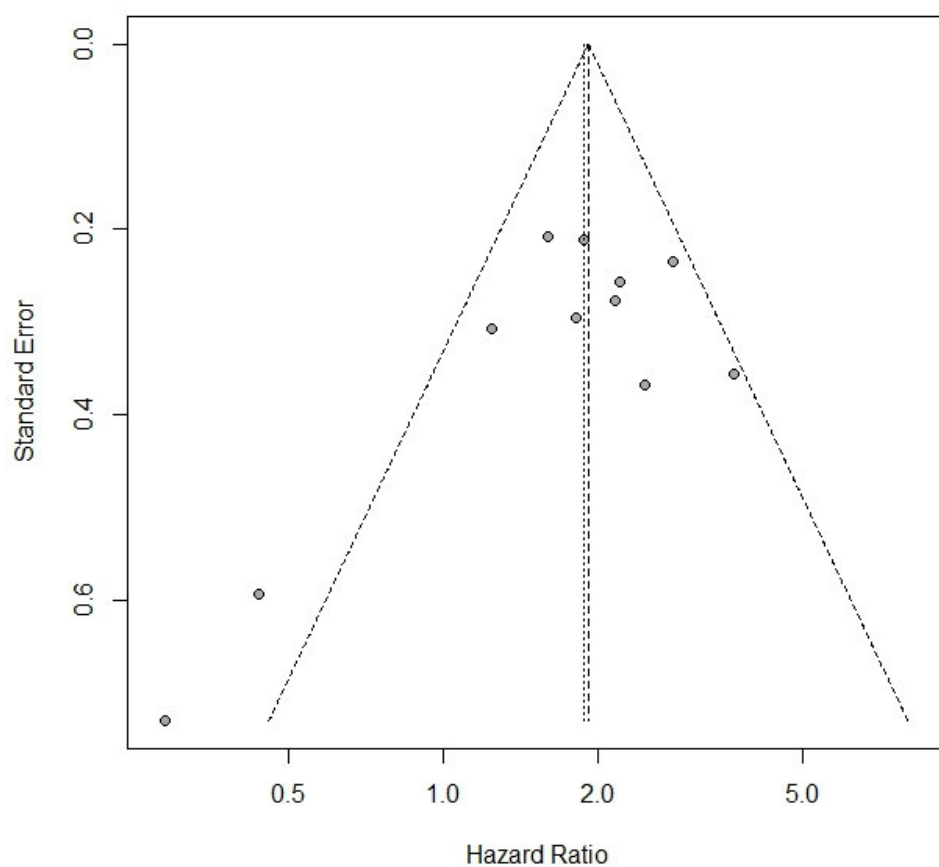


Figure S4C Funnel plots for evaluating potential publication bias on the association between HHLA2 high expression and overall survival in gastrointestinal cancers. Multivariate analysis.

Figure S5A

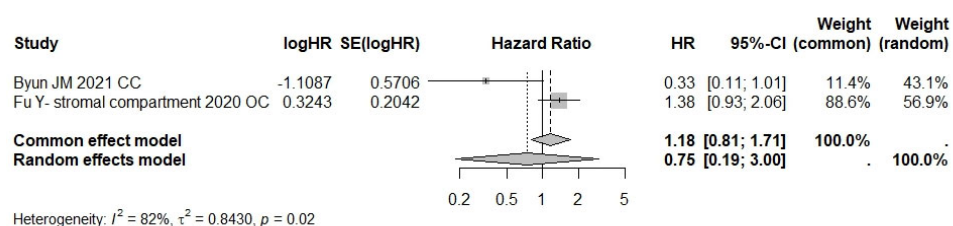


Figure S5A Forest plot for DFS. Univariate analysis. There was no association between HHLA2 expression and DFS.

Figure S5B

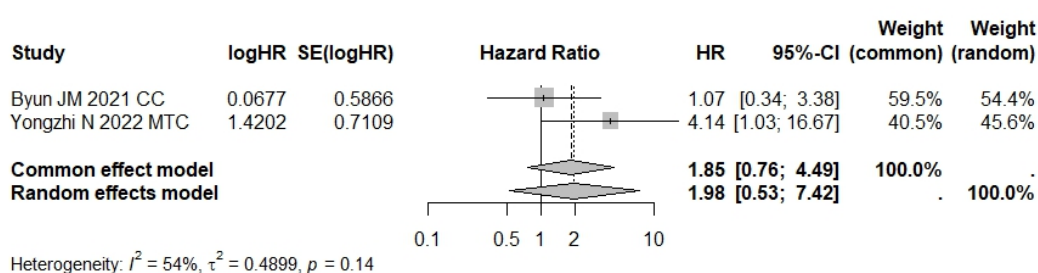


Figure S5B Forest plot for DFS. Multivariate analysis. There was no association between HHLA2 expression and DFS.

Figure S5C

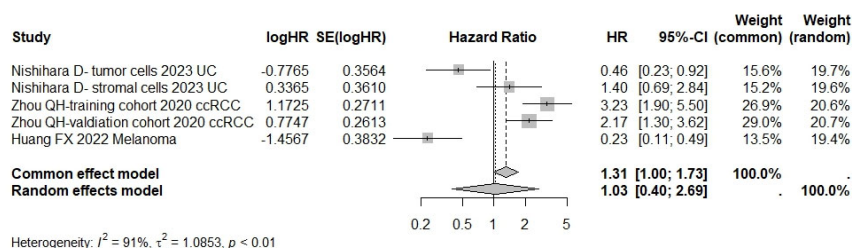


Figure S5C Forest plot for PFS. Univariate analysis. There was no association between HHLA2 expression and PFS.

Figure S5D

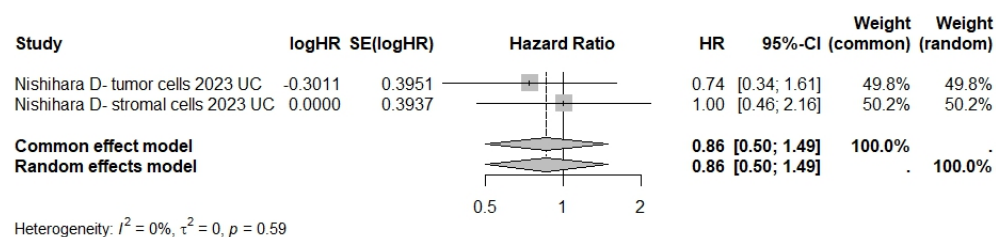


Figure S5D Forest plot for PFS. Multivariate analysis. There was no association between HHLA2 expression and PFS.



Figure S5E

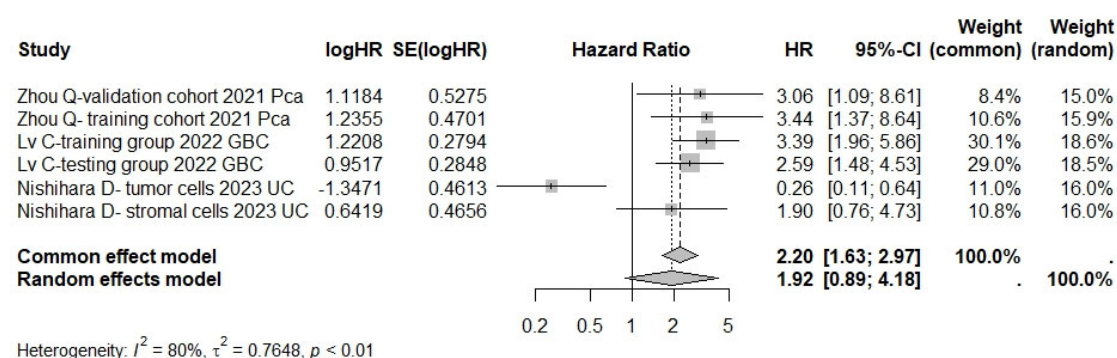


Figure S5E Forest plot for DSS. Univariate analysis. There was no significance between the high expression of HHLA2 and DSS.

Figure S5F

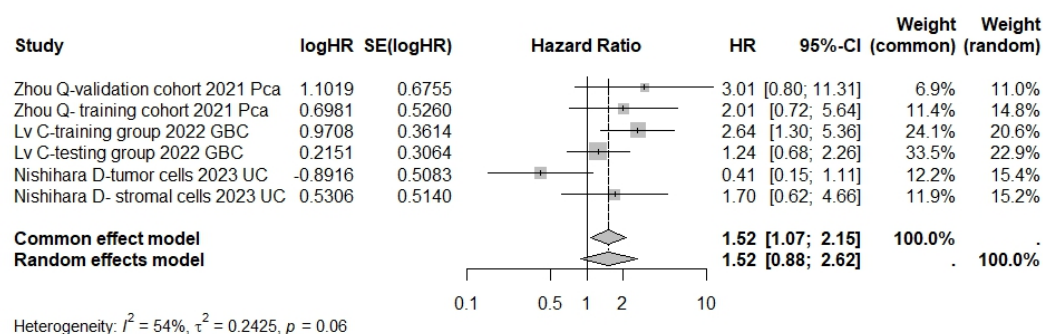


Figure S5F Forest plot for DSS. Multivariate analysis. There was no significance between the high expression of HHLA2 and DSS.

Figure S6

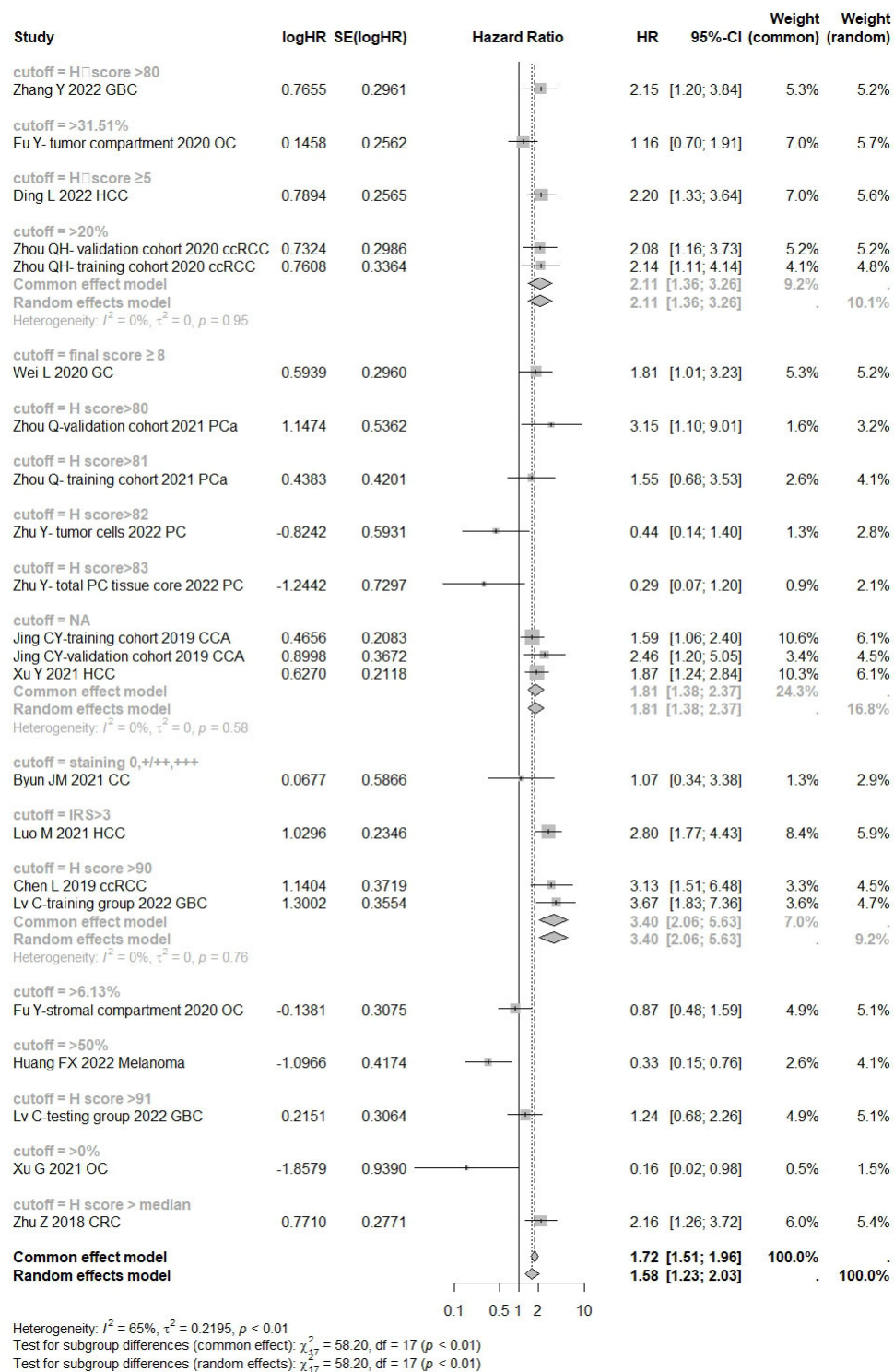


Figure S6 Subgroup analysis for the association between HHLA2 and overall survival grouped by cut off of HHLA2 low/high expression