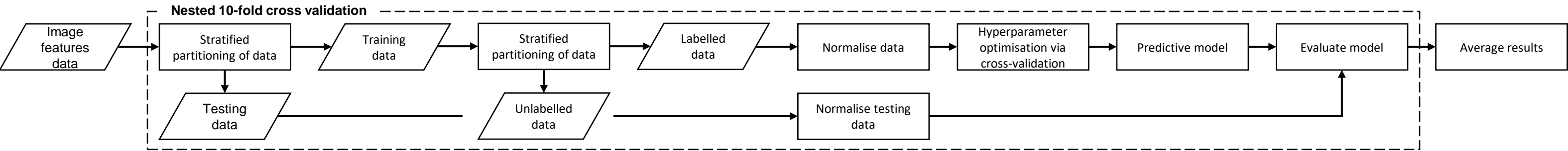


AI-Assisted Cotton Grading: Active and Semi-Supervised Learning to Reduce the Image-Labeling Burden

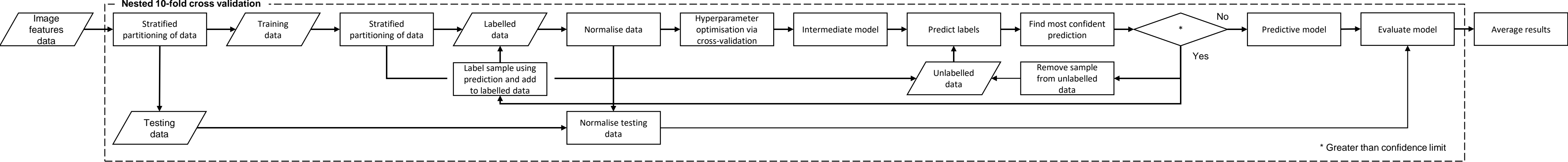
Oliver J Fisher<sup>1,2\*</sup>, Ahmed Rady<sup>1,2</sup>, Aly AA El-Banna<sup>3</sup>, Haitham H Emaish<sup>4</sup>, Nicholas J Watson<sup>6,1</sup>

<sup>1</sup>Food, Water, Waste Research Group, Faculty of Engineering, University of Nottingham, Nottingham, NG7 2RD, UK; <sup>2</sup>School of Chemistry and Chemical Engineering, University of Surrey, Guildford, GU2 7XH, UK; <sup>3</sup>Teagasc Food Research Centre , Ashtown, Dublin, D15 DY05, Ireland; <sup>4</sup>Department of Plant Production, Faculty of Agriculture, Saba Basha, Alexandria University, Alexandria Governorate 5424041, Egypt; <sup>5</sup>Department of Soils and Agricultural Chemistry, Faculty of Agriculture, Saba Basha, Alexandria University, Alexandria Governorate 5424041, Egypt; <sup>6</sup>School of Food Science and Nutrition, University of Leeds, Leeds, LS2 9JT, UK  
\*Corresponding Author: o.fisher@surrey.ac.uk

(A) Supervised learning framework



(B) Semi-supervised learning framework



(C) Active learning framework

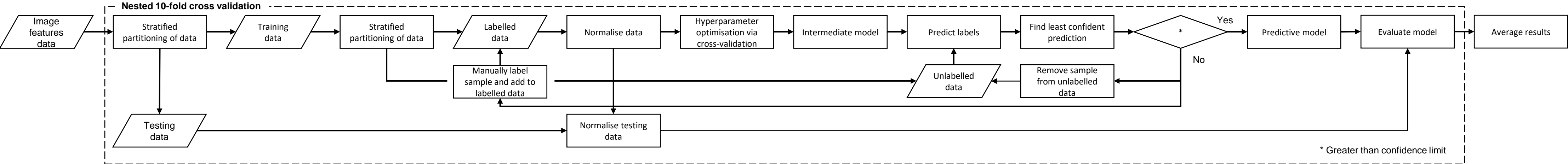


Figure S1. Flow chart of the three machine learning methods (A) supervised learning, (B) semi-supervised learning and (C) active learning