

Enantioselectivity of Pentedrone and Methylone on Metabolic Profiling in 2D and 3D Human Hepatocyte-like Cells

Bárbara Silva ^{1,2,3,*}, Joana Saraiva Rodrigues ⁴, Ana Sofia Almeida ³, Ana Rita Lima ^{1,2},
Carla Fernandes ^{3,5}, Paula Guedes de Pinho ^{1,2}, Joana Paiva Miranda ^{4,†} and Fernando Remião ^{1,2,*}

¹ Associate Laboratory i4HB—Institute for Health and Bioeconomy, Faculdade de Farmácia, Universidade do Porto, Rua Jorge Viterbo Ferreira, 228, 4050-313 Porto, Portugal; ritacmlima@hotmail.com (A.R.L.); pguedes@ff.up.pt (P.G.d.P.)

² UCIBIO-REQUIMTE, Laboratório de Toxicologia, Departamento de Ciências Biológicas, Faculdade de Farmácia, Universidade do Porto, Rua Jorge Viterbo Ferreira, 228, 4050-313 Porto, Portugal

³ Laboratório de Química Orgânica e Farmacêutica, Departamento de Ciências Químicas, Faculdade de Farmácia, Universidade do Porto, Rua de Jorge Viterbo Ferreira, 228, 4050-313 Porto, Portugal; up201605043@edu.ff.up.pt (A.S.A.); cfernandes@ff.up.pt (C.F.)

⁴ Research Institute for Medicines (iMed), Faculdade de Farmácia, Universidade de Lisboa, Avenida Professor Gama Pinto, 1649-003 Lisboa, Portugal; joana.s.rodrigues@campus.ul.pt (J.S.R.); jmiranda@ff.ulisboa.pt (J.P.M.)

⁵ Centro Interdisciplinar de Investigação Marinha e Ambiental (CIIMAR), Universidade do Porto, Avenida General Norton de Matos, 4450-208 Matosinhos, Portugal

* Correspondence: barbarapolerisilva@gmail.com (B.S.); remiao@ff.up.pt (F.R.)

† These authors contributed equally to this work.

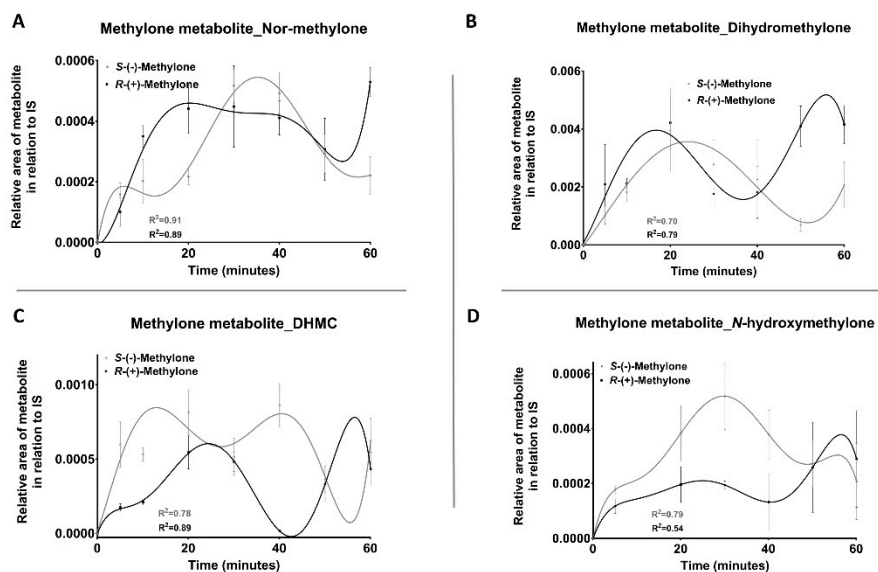


Figure S1. Methylone metabolites (nor-methylone, DHMC, *N*-hydroxymethylone and dihydromethylone) produced over the time after incubation with microsomes (1 mg/mL). Data is presented as average \pm SD ($n=2$). Polynomial regression was used to fit the curves (Nor-methylone, DHMC and *N*-hydroxymethylone: Centered sixth order; Dihydromethylone: Centered fifth order).

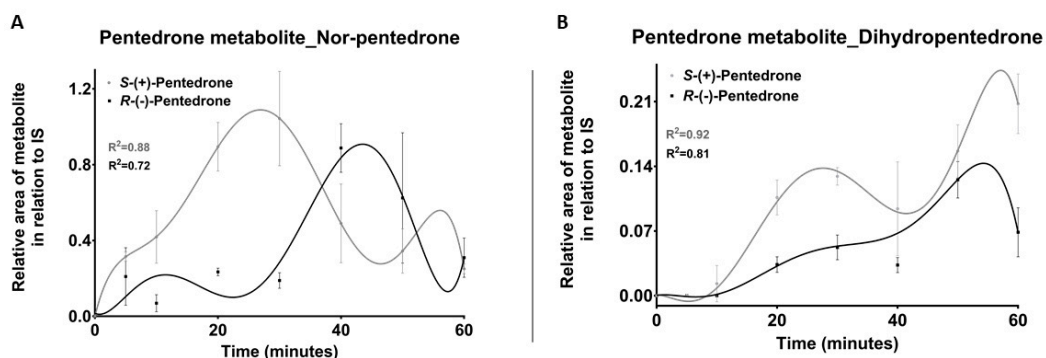


Figure S2. Pentedrone metabolites (nor-pentedrone and dihydropentedrone) produced over the time after incubation with microsomes (1 mg/mL). Data is presented as average \pm SD ($n=2$). Centered sixth order polynomial regression were used to fit the curves.

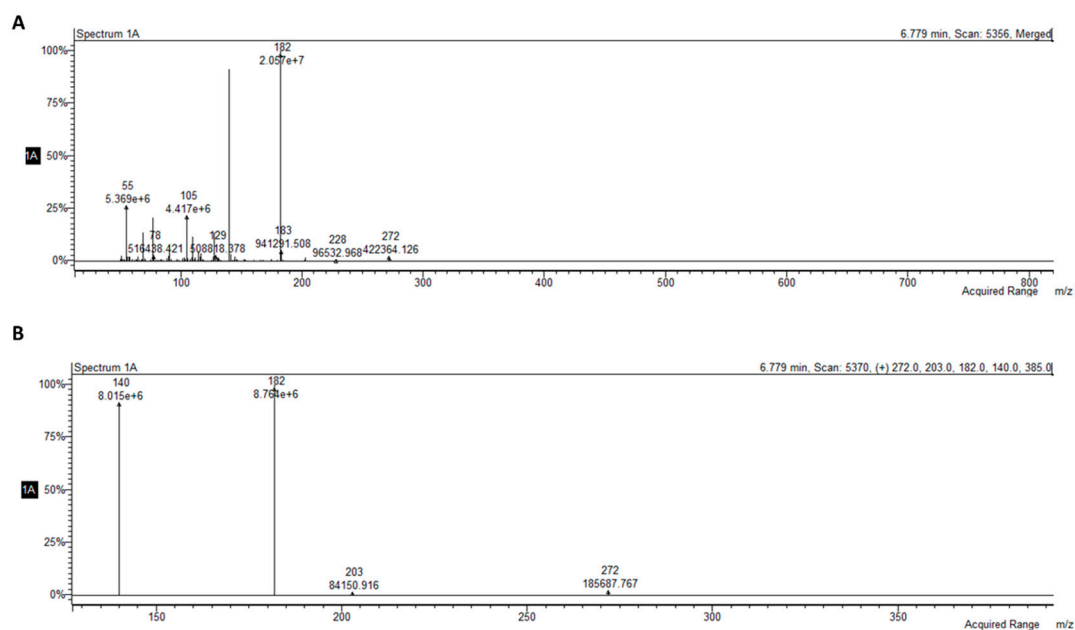


Figure S3. GC-MS spectrum of dihydropentedrone in (A) Full Scan and (B) SIM mode.

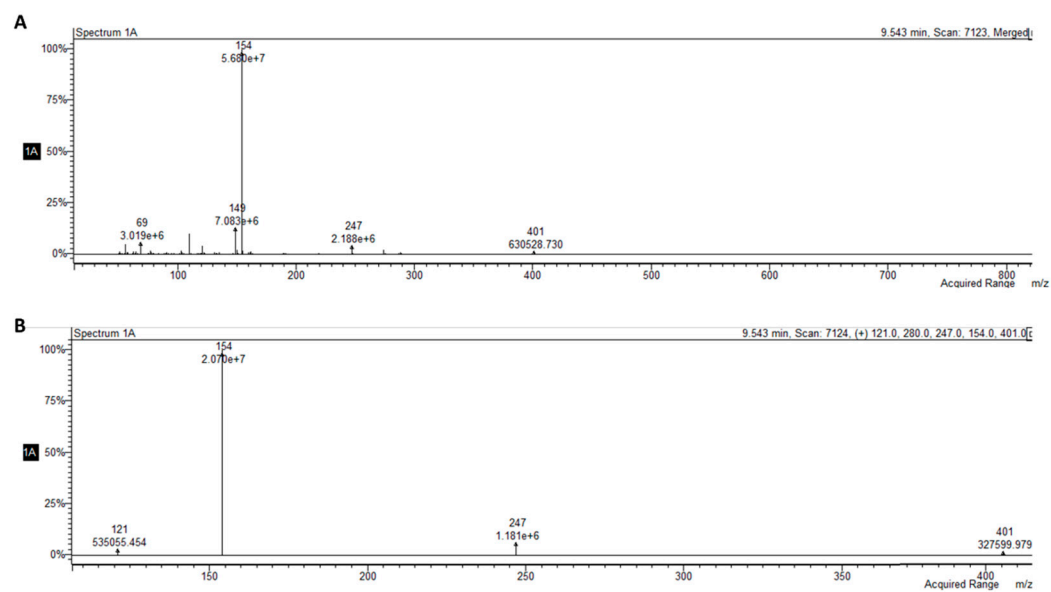


Figure S4. GC-MS spectrum of dihydromethylone in (A) Full Scan and (B) SIM mode.

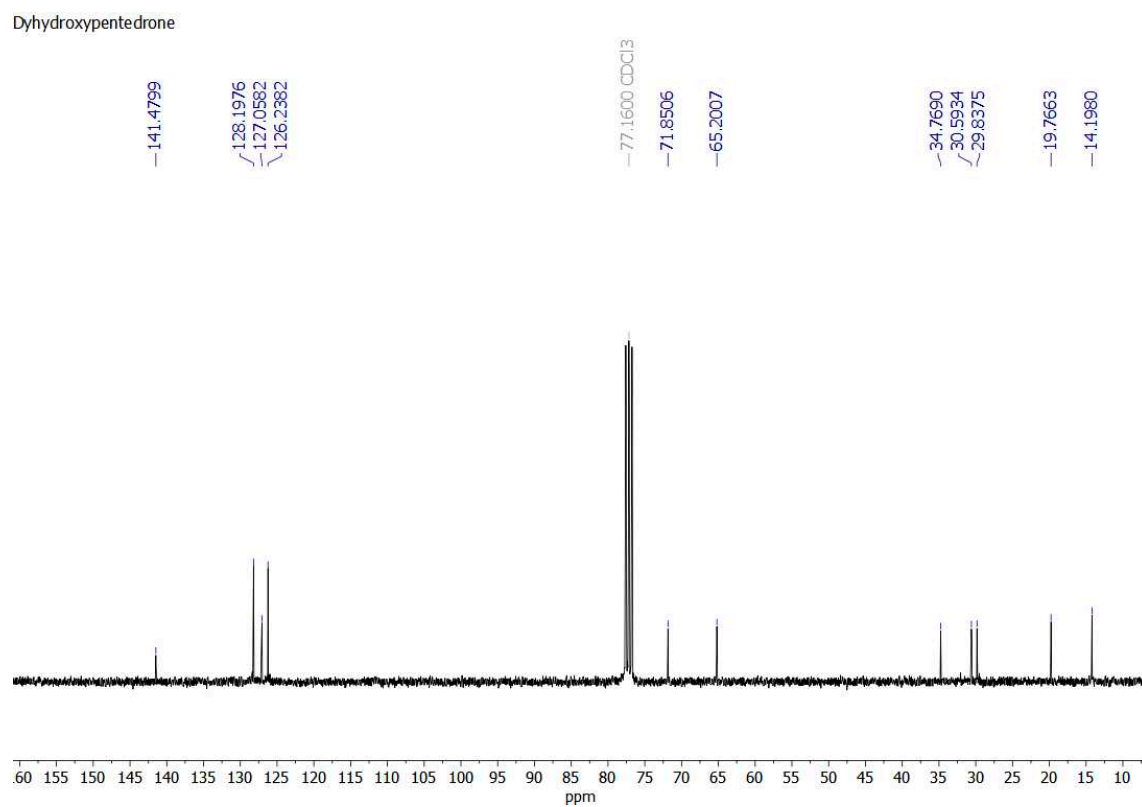
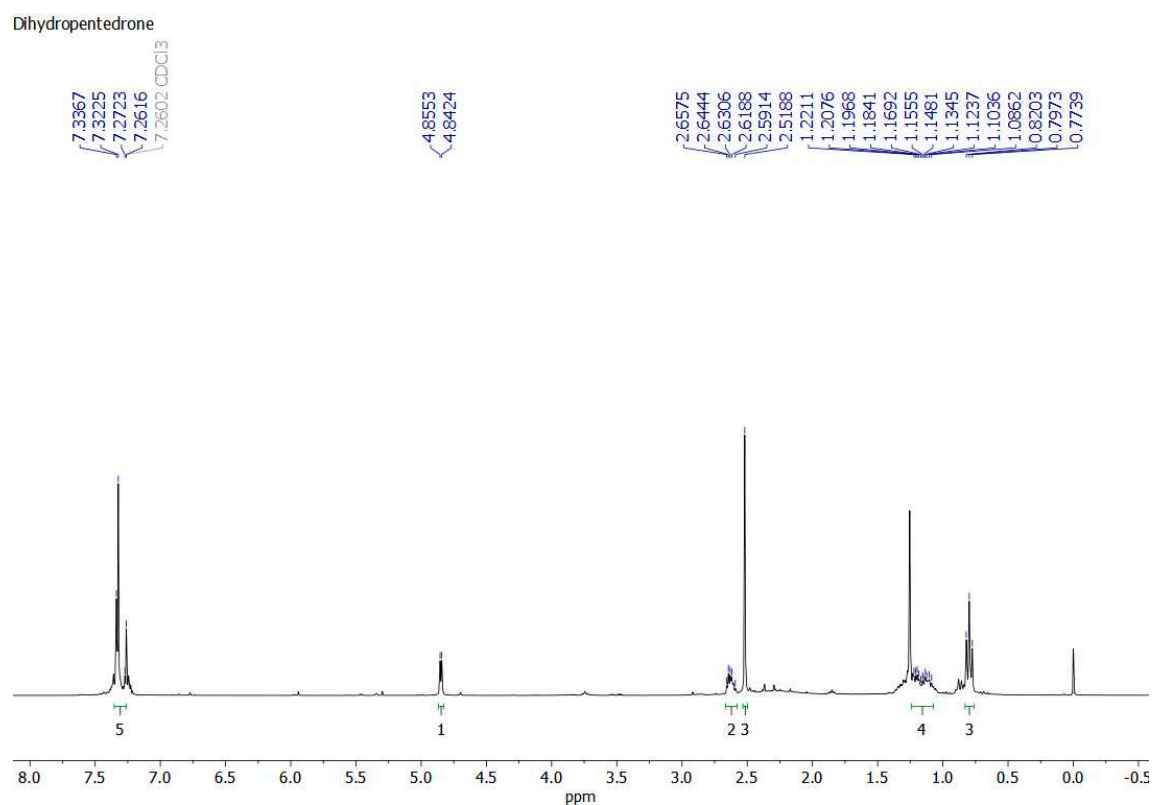


Figure S5. ^1H NMR (300.13 MHz, CDCl_3) and ^{13}C NMR (75.48 MHz, $\text{DMSO}-d_6$) for dihydromethylone.

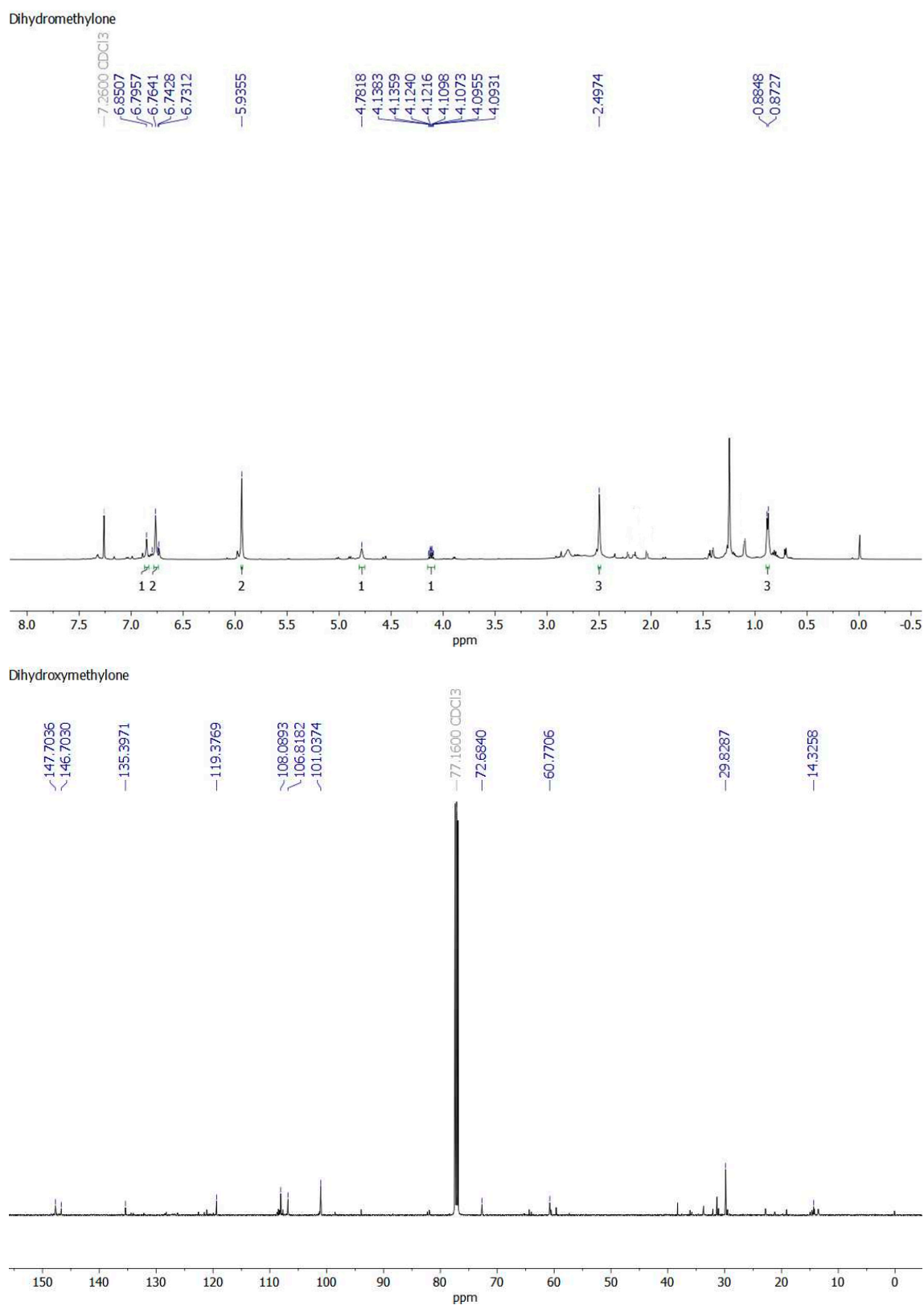


Figure S6. ^1H NMR (300.13 MHz, CDCl_3) and ^{13}C NMR (75.48 MHz, $\text{DMSO}-d_6$) for dihydropentedrone.