

SUPPORTING INFORMATION

Figure S1. ^1H NMR spectrum in CD_3OD (700 MHz) of lepadin A (1)	1
Figure S2. HR-ESIMS spectrum of lepadin A (1)	1
Figure S3. ^1H NMR spectrum in CD_3OD (700 MHz) of lepadin B (2)	2
Figure S4. HR-ESIMS spectrum of lepadin B (2)	2
Figure S5. ^1H NMR spectrum in CD_3OD (700 MHz) of lepadin L (3)	3
Figure S6. ^{13}C NMR spectrum in CD_3OD (175 MHz) of lepadin L (3)	3
Figure S7. HR-ESIMS spectrum of lepadin L (3)	4
Figure S8. HR-ESI MS/MS spectrum of lepadin L (3)	4
Figure S9. ^1H - ^1H COSY NMR spectrum in CD_3OD (700 MHz) of lepadin L (3)	5
Figure S10. ^1H - ^{13}C HSQC NMR spectrum in CD_3OD (700 MHz) of lepadin L (3)	5
Figure S11. ^1H - ^{13}C HMBC NMR spectrum in CD_3OD (700 MHz) of lepadin L (3)	6
Figure S12. ^1H - ^1H NOESY NMR spectrum in CD_3OD (700 MHz) of lepadin L (3)	6
Figure S13. ^1H NMR spectrum in CD_3OD (700 MHz) of lepadin L acetone (4)	7
Figure S14. Enlargement of ^1H - ^{13}C -HMBC spectrum in CD_3OD (700 MHz) of lepadin L acetone (4)	7
Figure S15. HR-ESIMS spectrum of lepadin L acetone (4)	8

Figure S1. ^1H NMR spectrum in CD_3OD (700 MHz) of lepadin A (**1**)

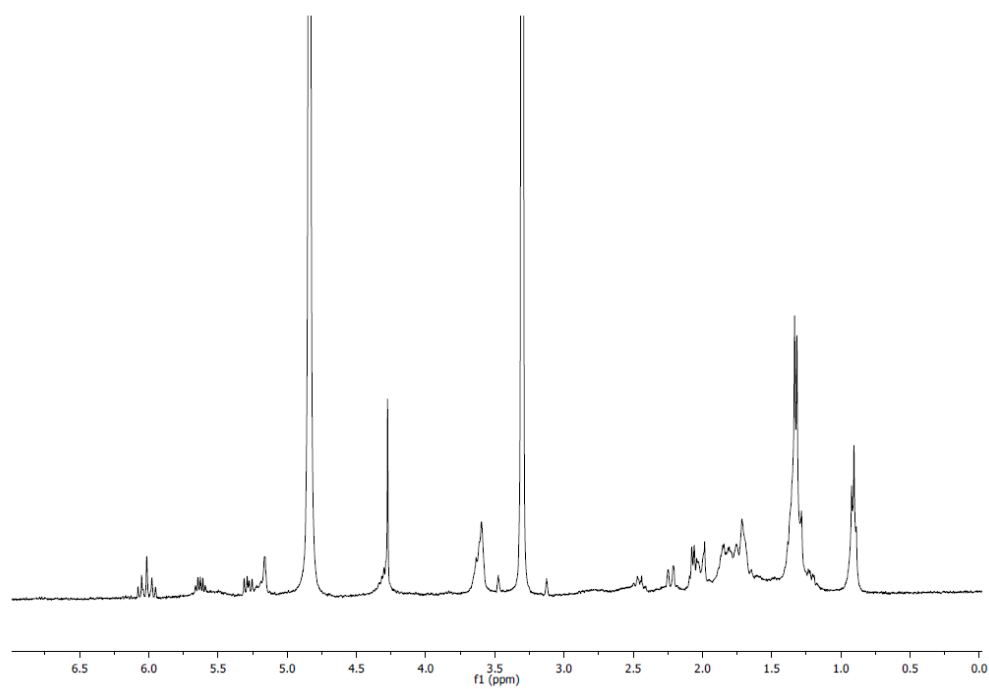


Figure S2. HR-ESIMS spectrum of lepadin A (**1**)

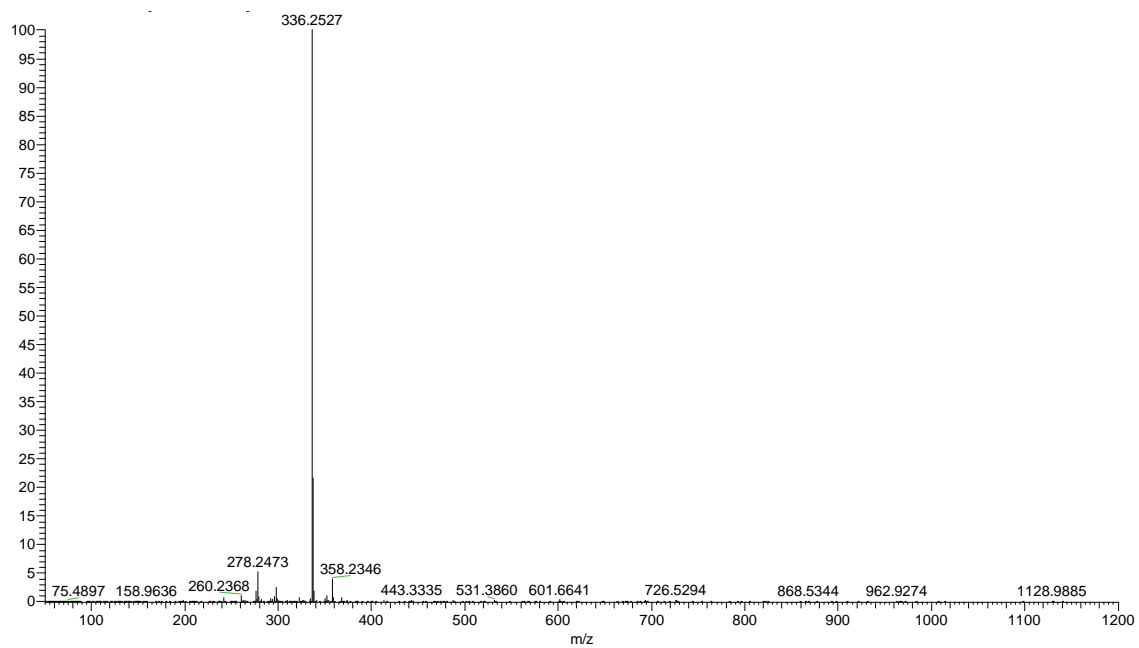


Figure S3. ^1H NMR spectrum in CD_3OD (700 MHz) of lepadin B (2)

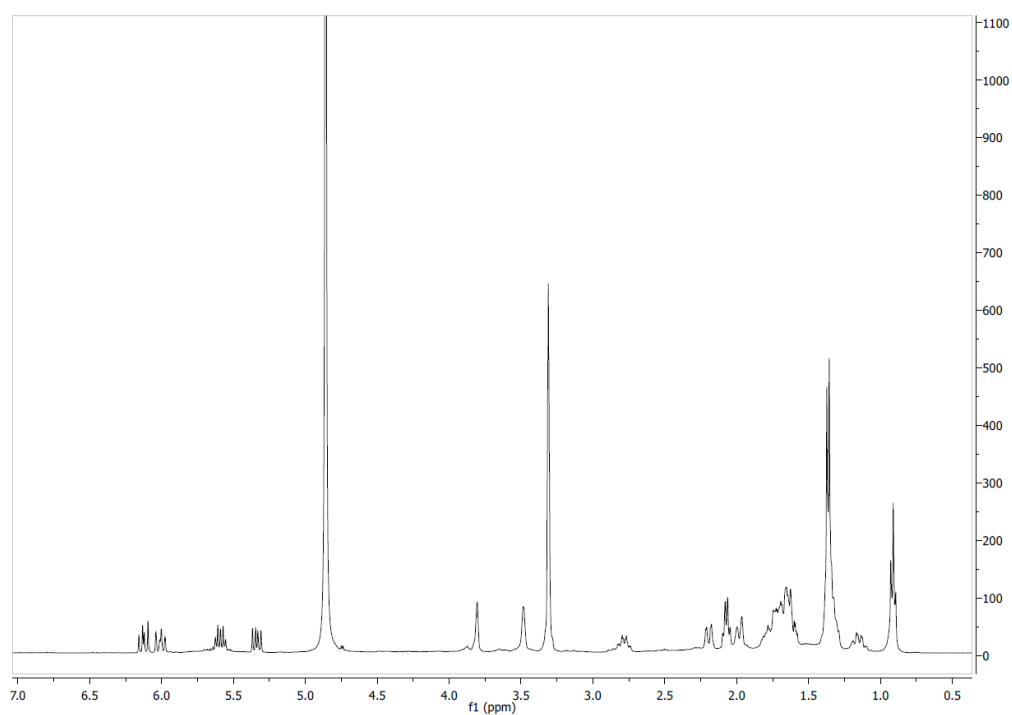


Figure S4. HR-ESIMS spectrum of lepadin B (2)

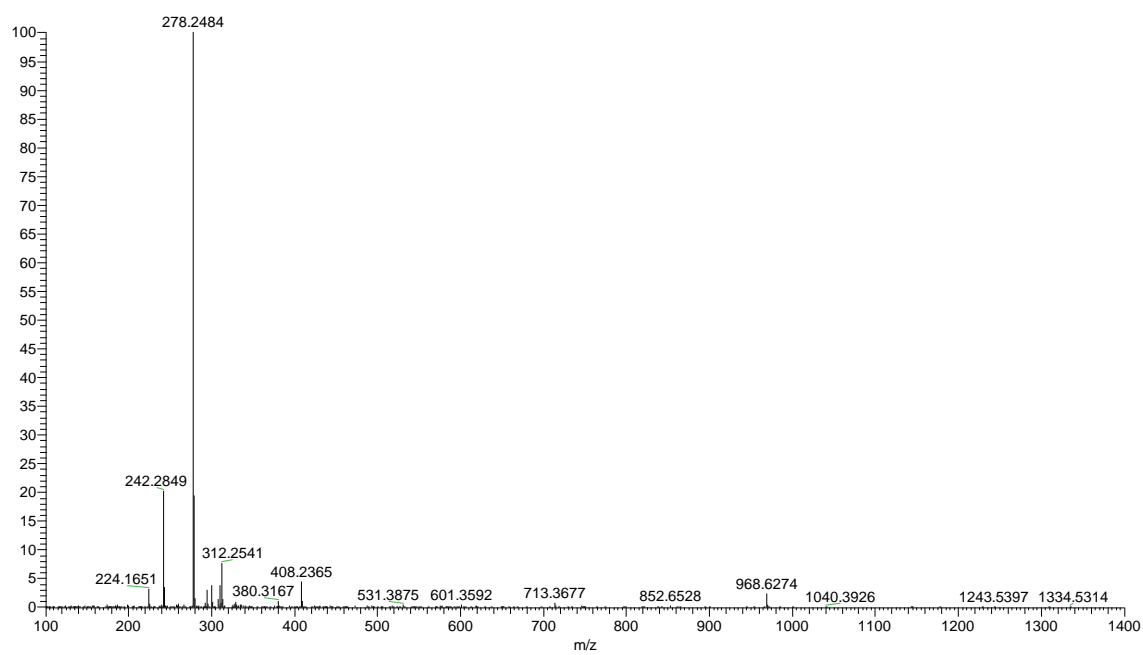


Figure S5. ^1H NMR spectrum in CD_3OD (700 MHz) of lepadin L (3)

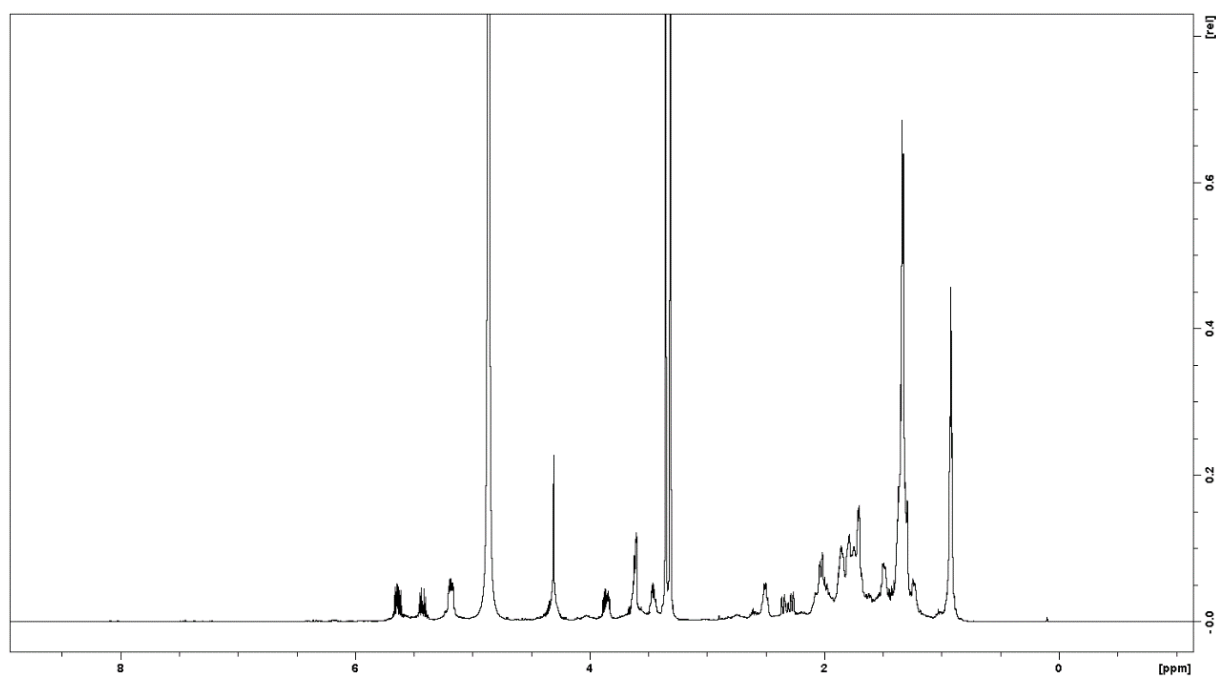


Figure S6. ^{13}C NMR spectrum in CD_3OD (175 MHz) of lepadin L (3)

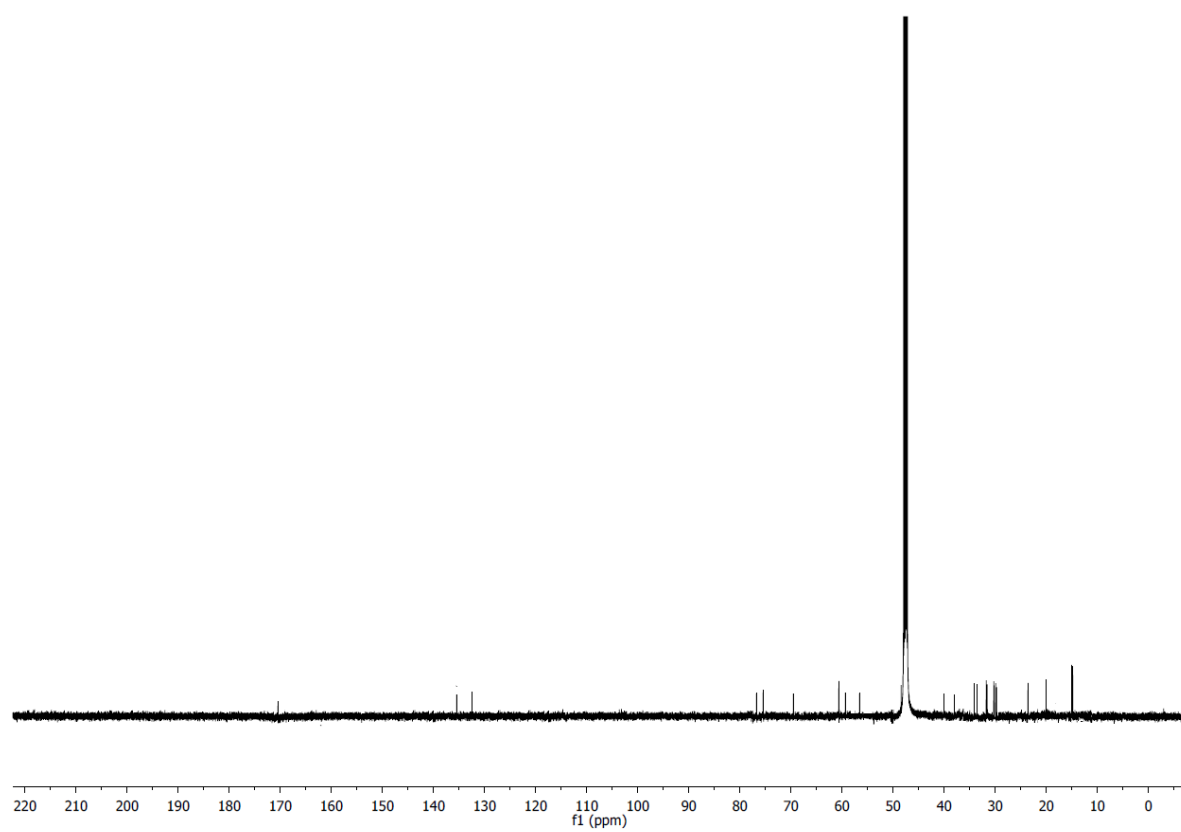


Figure S7. HR-ESIMS spectrum of lepadin L (3)

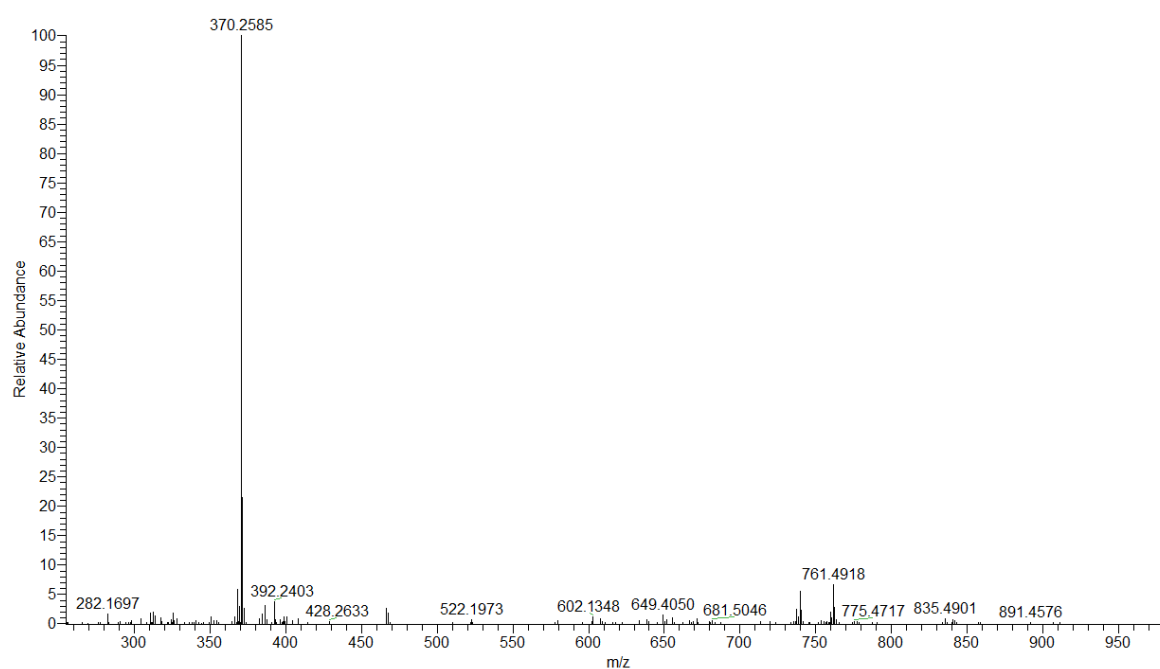


Figure S8. HR-ESIMS/MS spectrum of lepadin L (3)

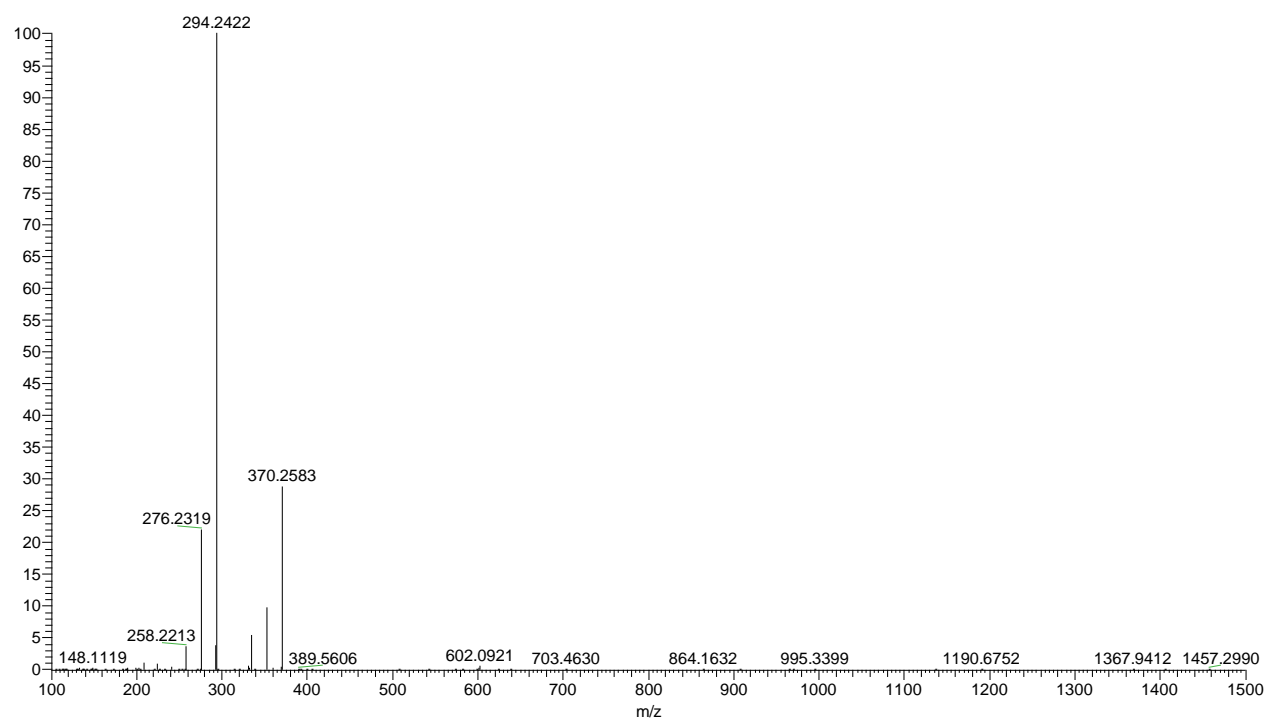


Figure S9. ^1H - ^1H COSY NMR spectrum in CD_3OD (700 MHz) of lepadin L (3)

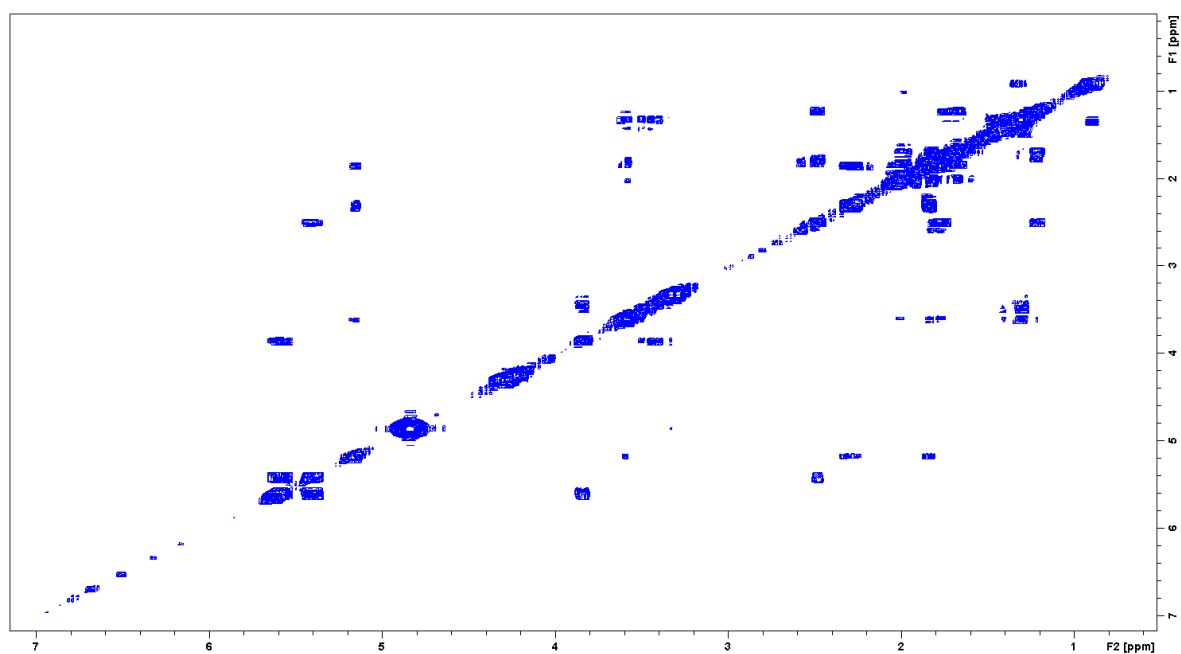


Figure S10. ^1H - ^{13}C HSQC NMR spectrum in CD_3OD (700 MHz) of lepadin L (3)

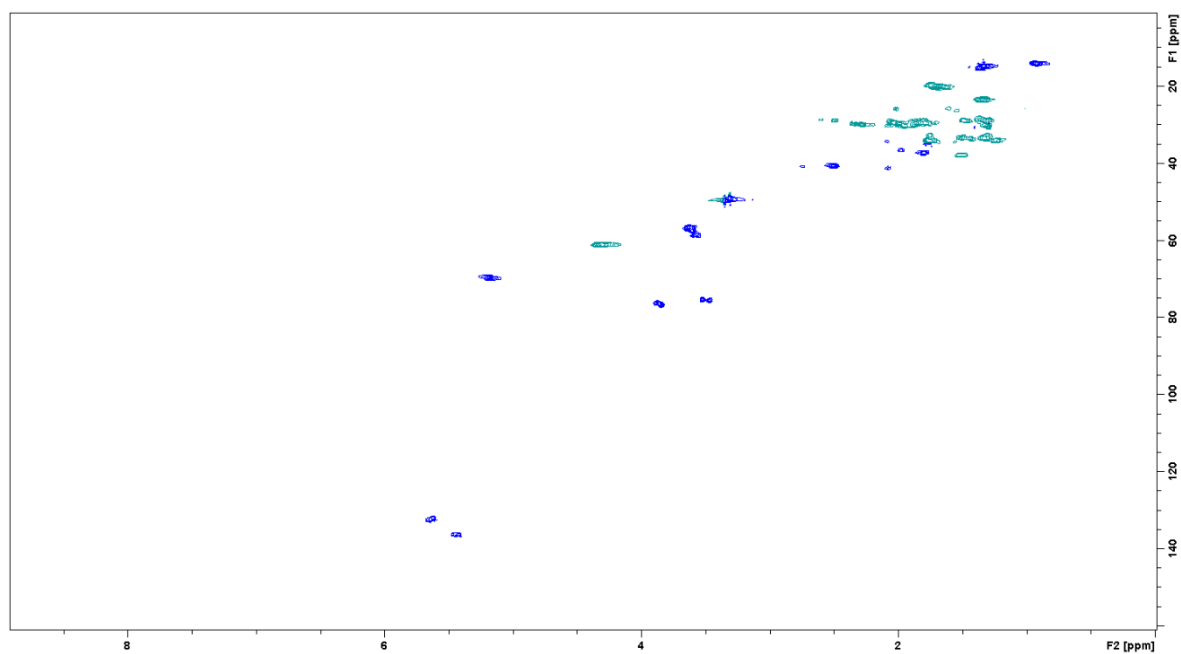


Figure S11. ^1H - ^{13}C HMBC NMR spectrum in CD_3OD (700 MHz) of lepadin L (3)

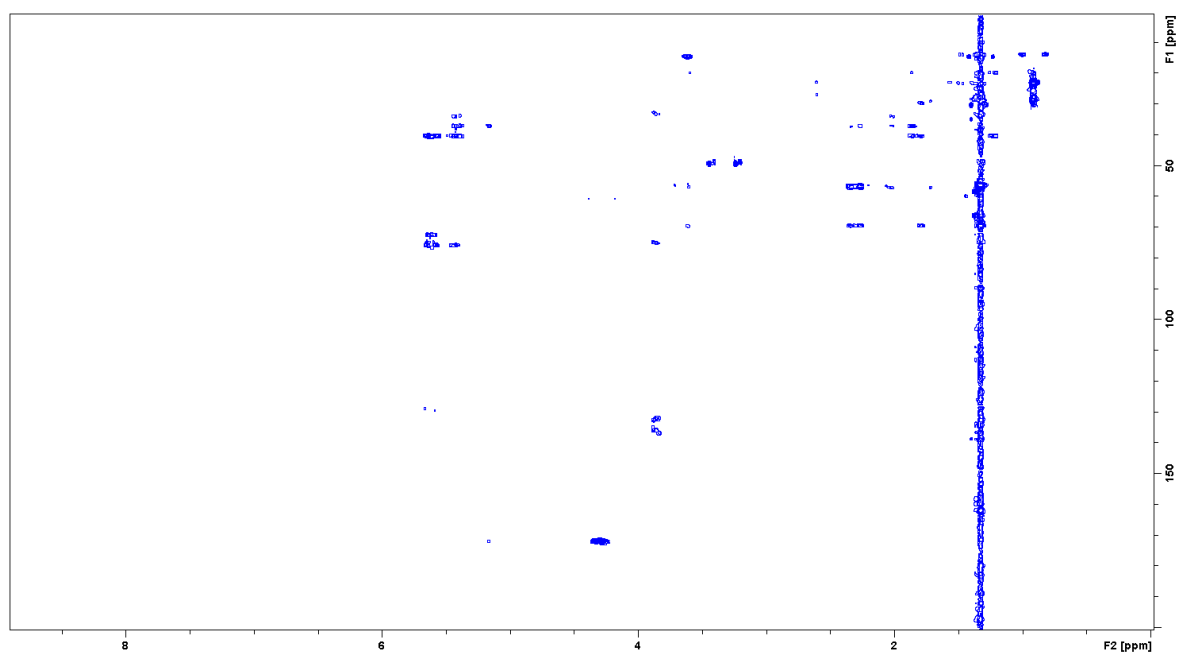


Figure S12. ^1H - ^1H NOESY NMR spectrum in CD_3OD (700 MHz) of lepadin L (3)

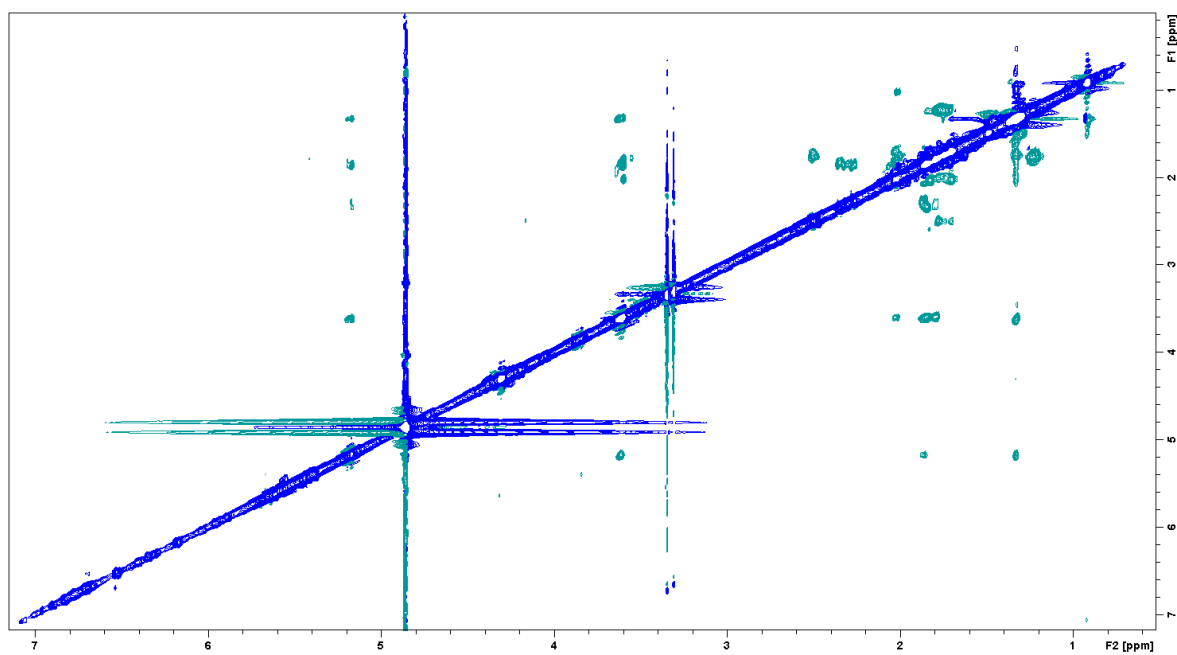


Figure S13. ^1H NMR spectrum in CD_3OD (700 MHz) of lepadin L acetone (4)

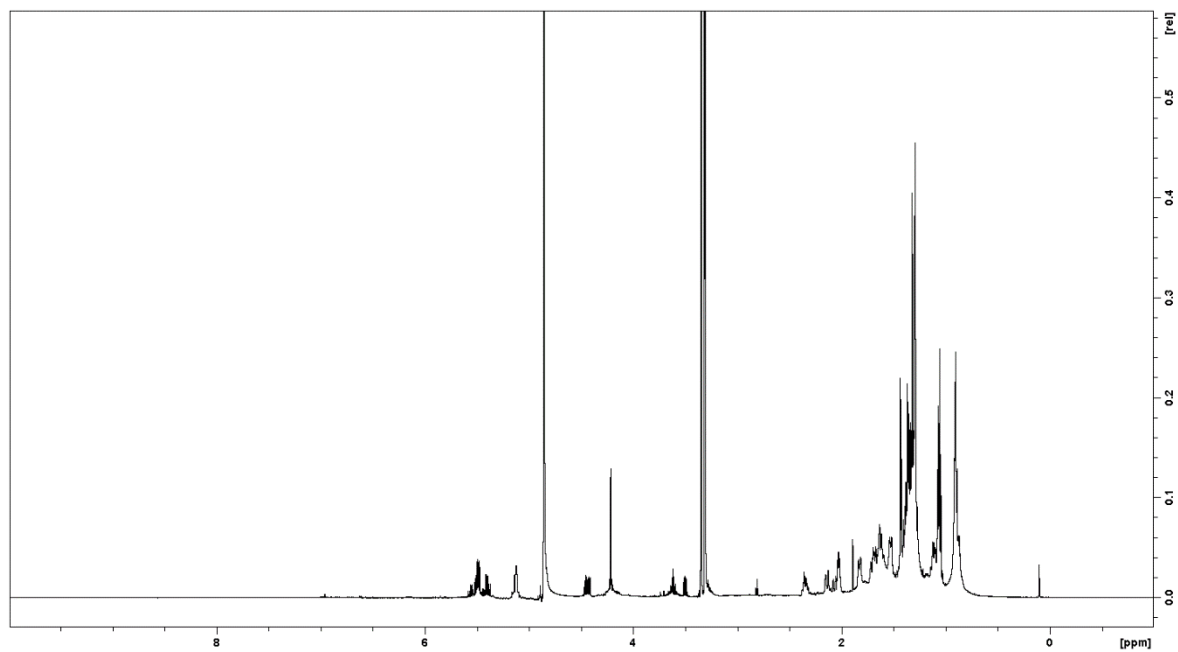


Figure S14. Enlargement of ^1H - ^{13}C -HMBC spectrum in CD_3OD (700 MHz) of lepadin L acetone (4)

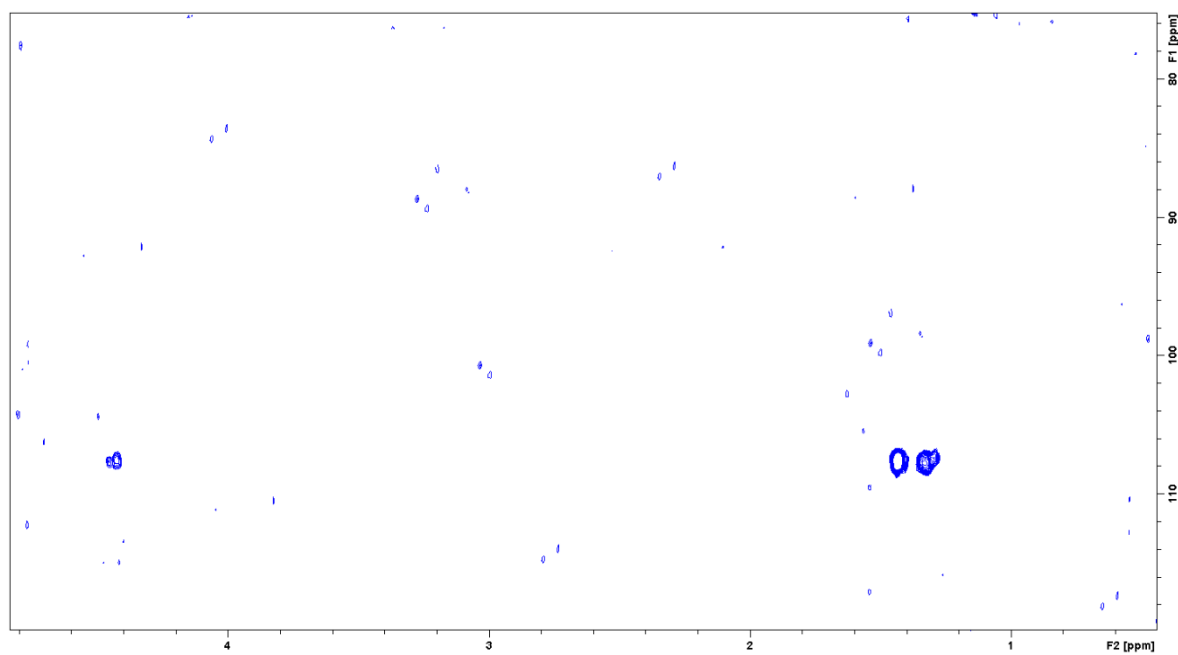


Figure S15. HR-ESIMS spectrum of lepadin L acetonide (**4**)

