

Figure S1. Winter wheat yield forecasting accuracy with deep learning model from 1982 to 2015 before detrending yield

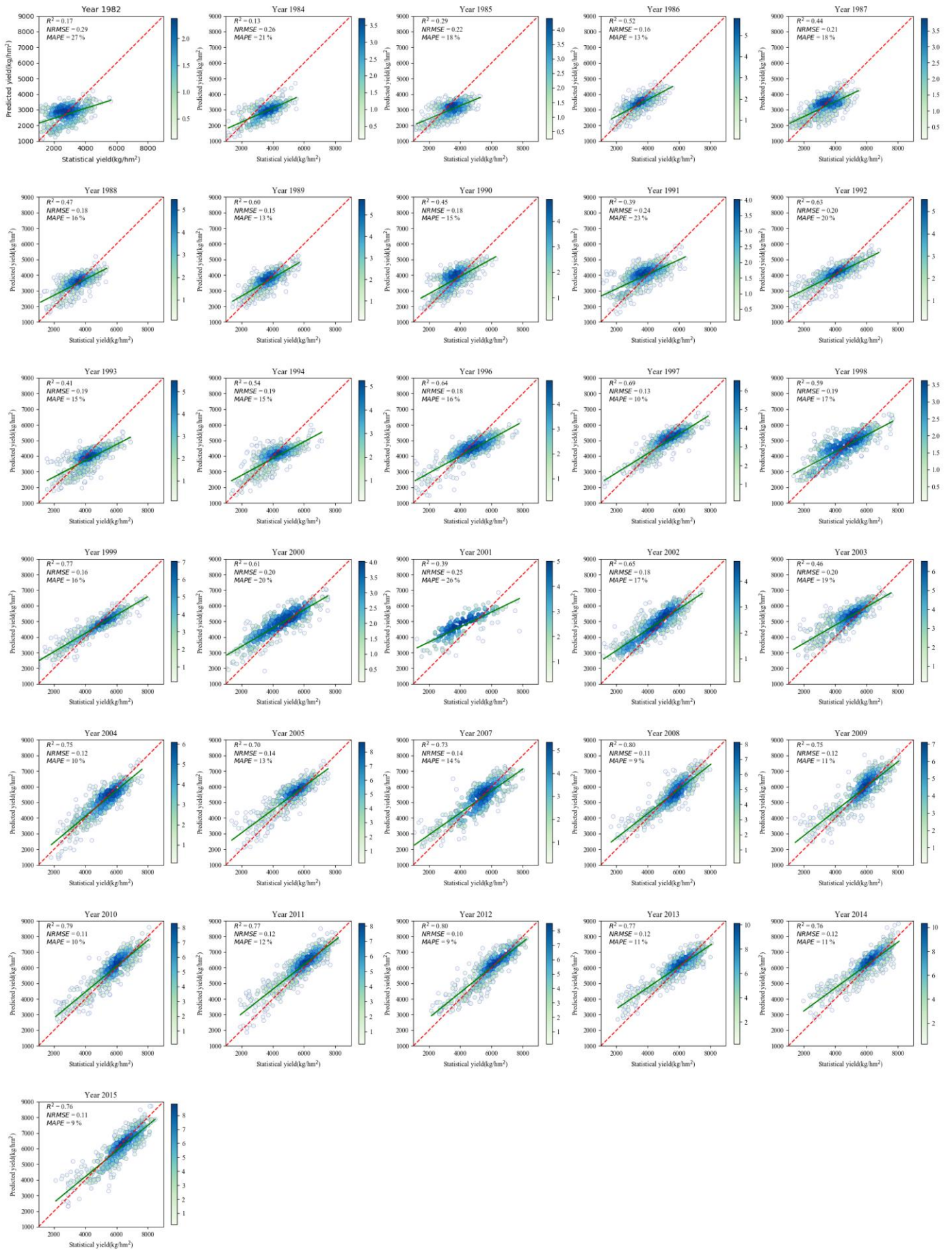


Figure S2. Winter wheat yield forecasting accuracy with deep learning model from 1982 to 2015 after detrending yield



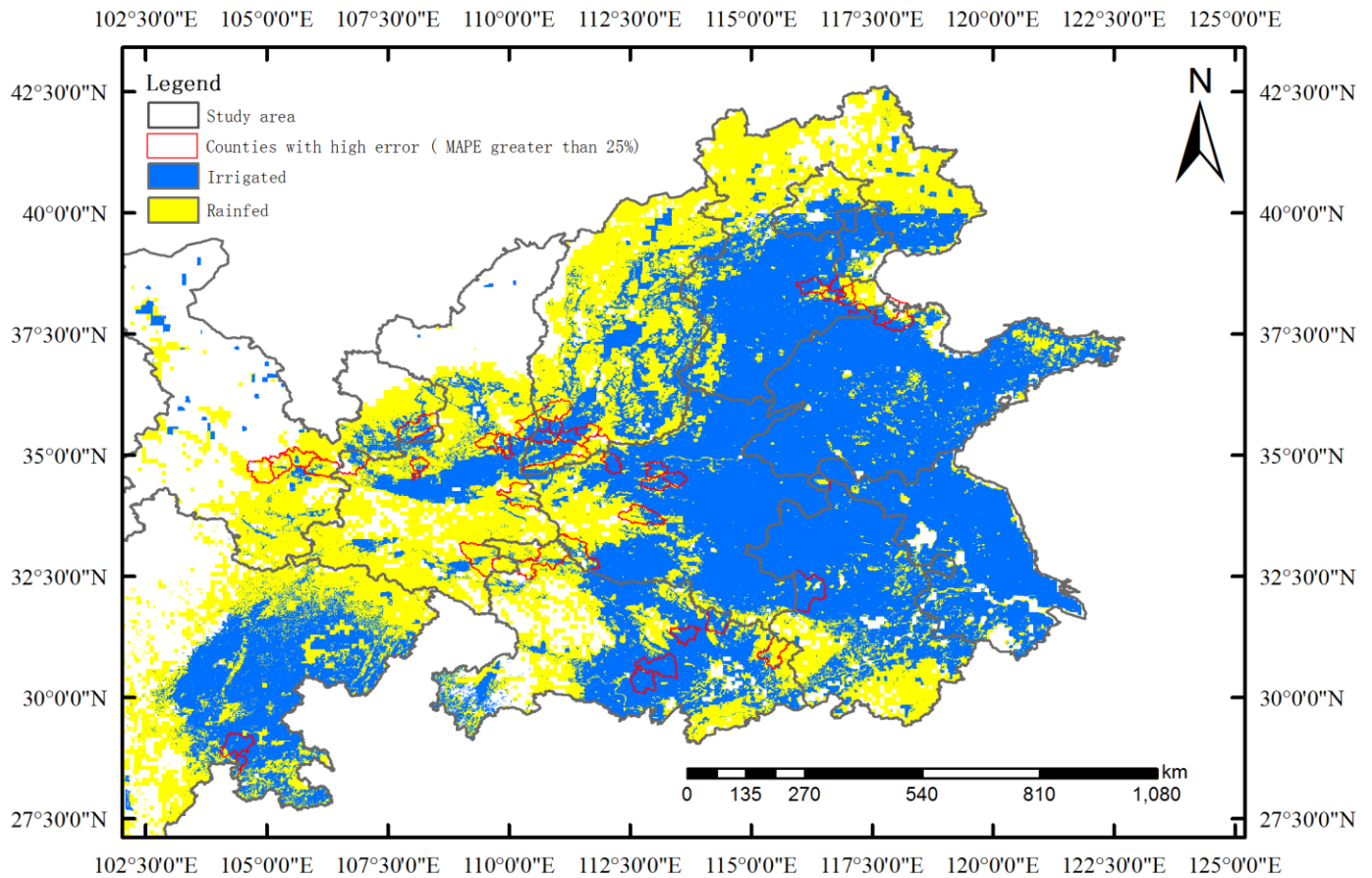


Figure S3. Locations of counties where MAPE is greater than 25% and the background is distribution of irrigated and rainfed areas

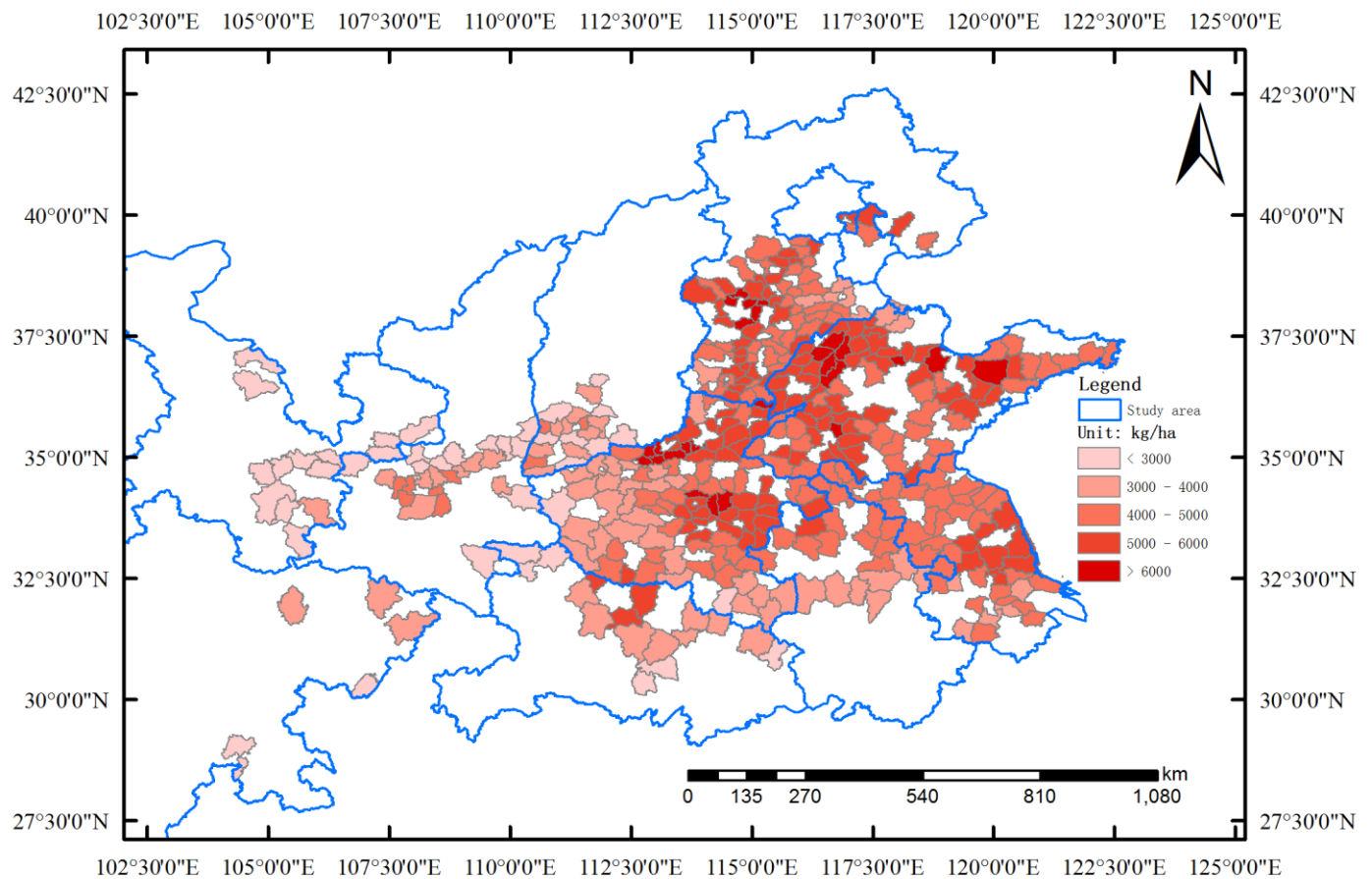


Figure S4. Average yield of each county from 1982 to 2015