

Figure S1: Profile AA' in Lu et al. (2021).

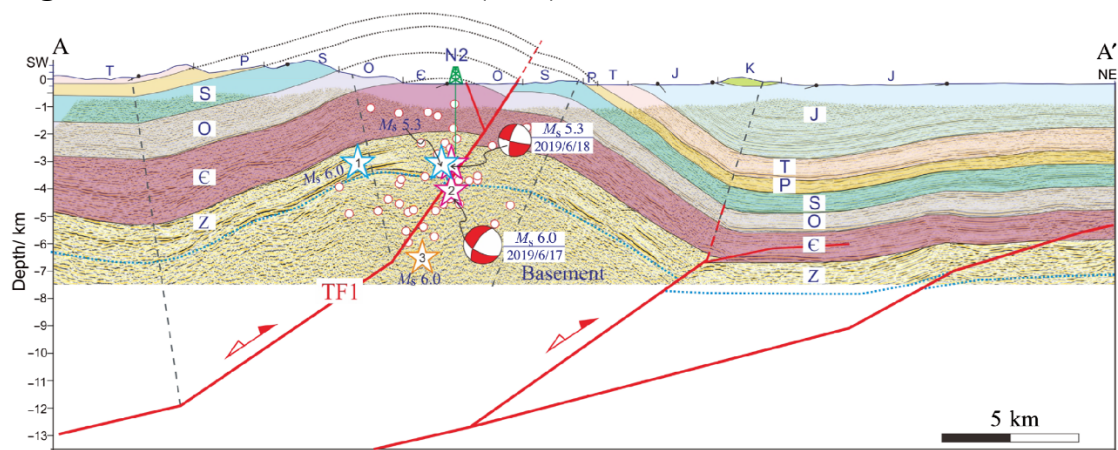


Figure S2: Profile BB' in Lu et al. (2021).

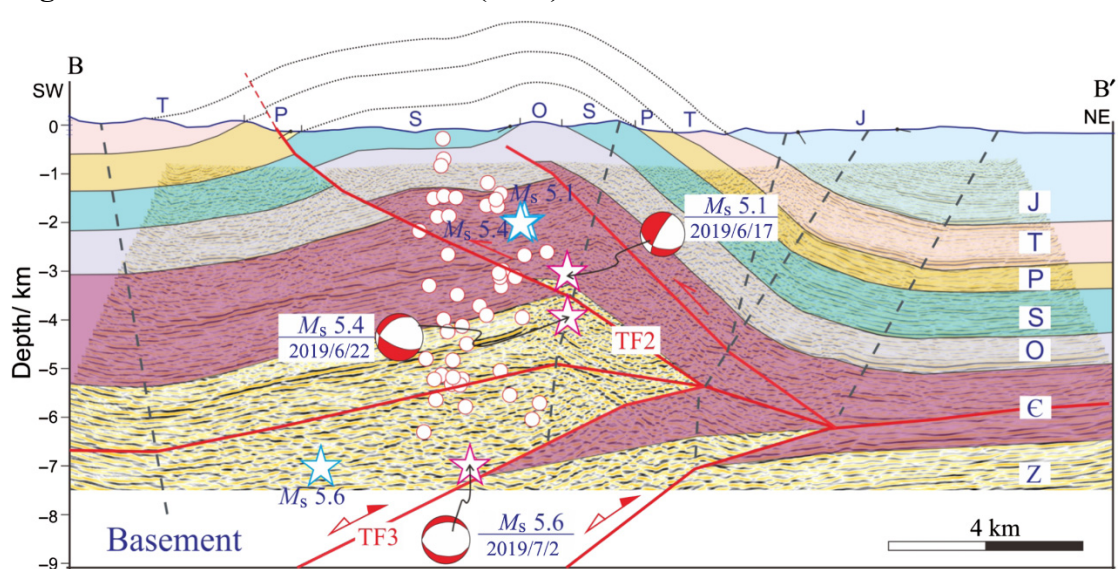
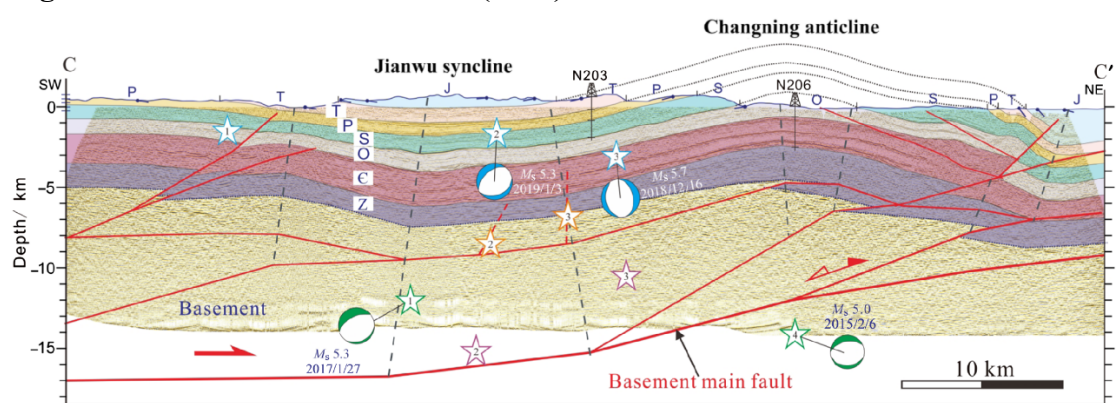
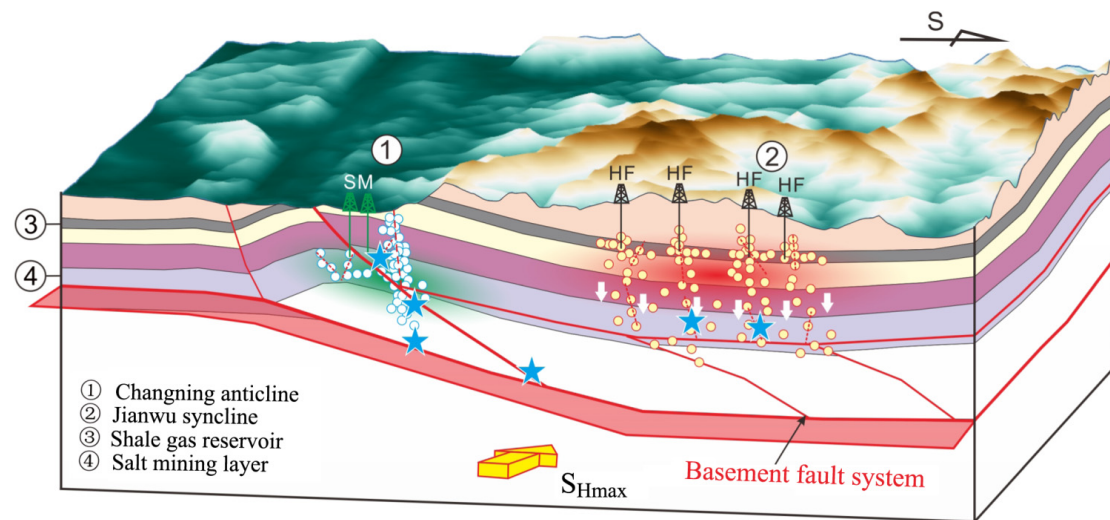


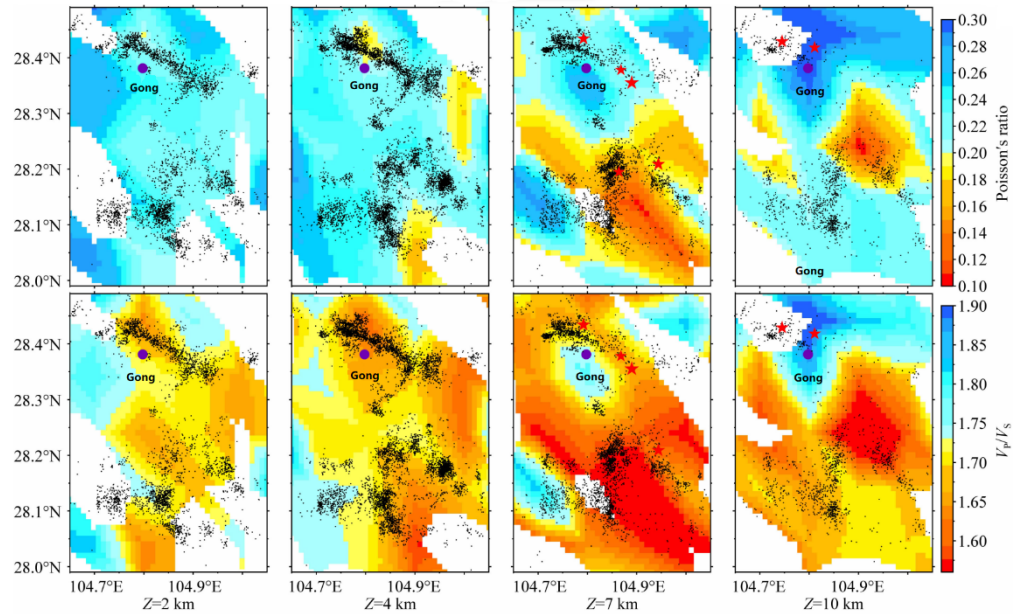
Figure S3: Profile CC' in Lu et al. (2021).



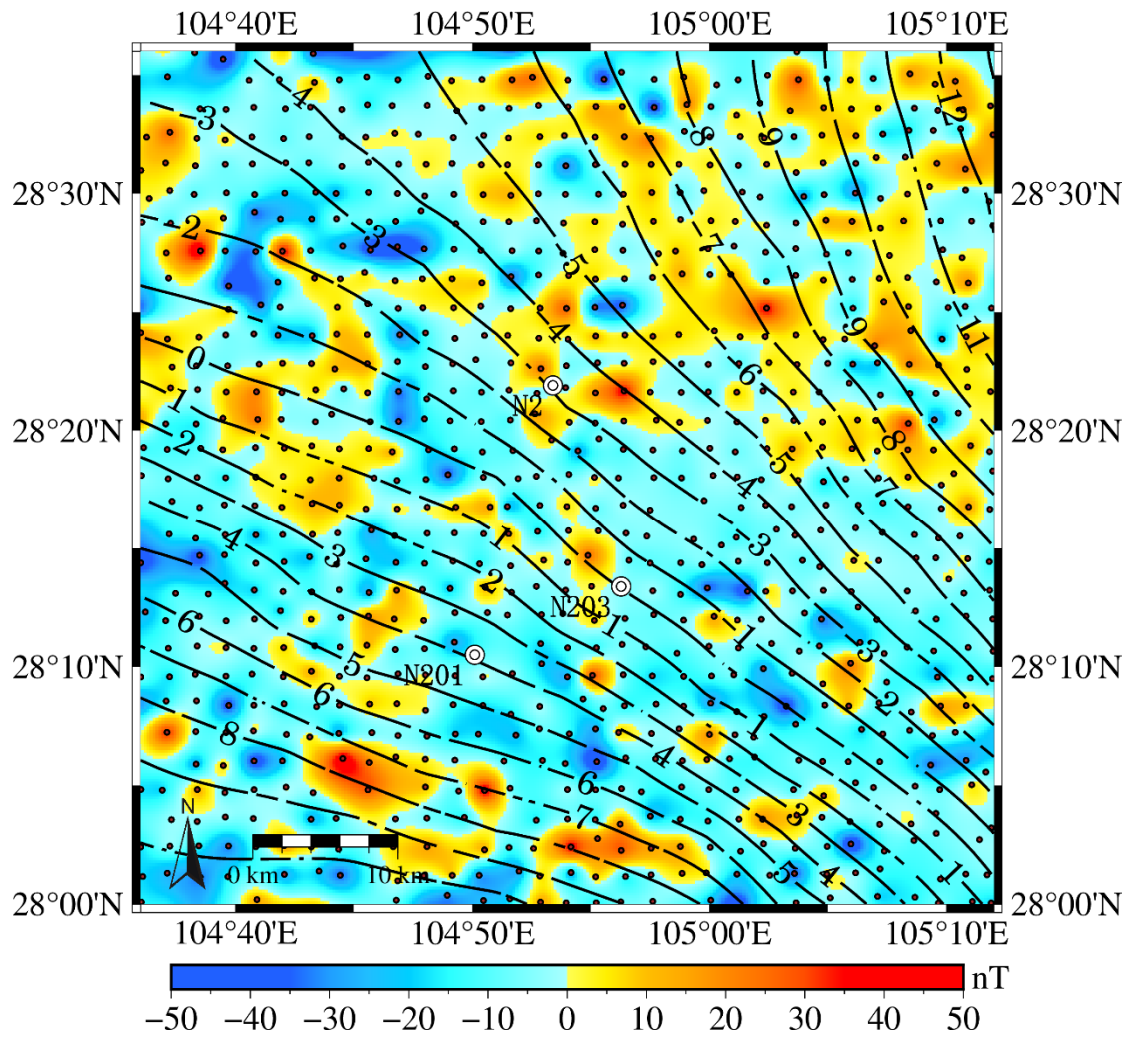
**Figure S4: Seismic model of the Changning area in Lu et al. (2021)**



**Figure S5:  $V_p/V_s$  and Poisson's ratio in Hu et al. (2021)**



**Figure S6: A comparison of the magnetic anomaly obtained from the 912 stations and WDMAM2.0.**



Magnetic anomalies in Changning area. Black solid contour lines indicate magnetic anomalies given by WDMAM2.0.

## References

- Hu, X., Cui, X., Zhang, G., Wang, G., Shi, B., & Jiang, D. (2021). Analysis on the mechanical causes of the complex seismicity in Changning area, China. *Chinese Journal of Geophysics (in Chinese)*, 64(1): 1-17, doi: 10.6038/cjg202100232.
- Lu, R., He, D., Liu, J. Z., Tao, W., Huang, H., Xu, F., & Liu, G. (2021). Seismogenic Faults of the Changning Earthquake Sequence Constrained by High-Resolution Seismic Profiles in the Southwestern Sichuan basin, China. *Seismological Research Letters*, 92(6), 3757-3766.