

Supplementary Materials: New Interactors of the Truncated EBNA-LP Protein Identified by Mass Spectrometry in P3HR1 Burkitt's Lymphoma Cells

Sonia Chelouah, Emilie Cochet, Sophie Couvé, Sandy Balkaran, Aude Robert, Evelyne May, Vasily Ogryzko and Joëlle Wiels

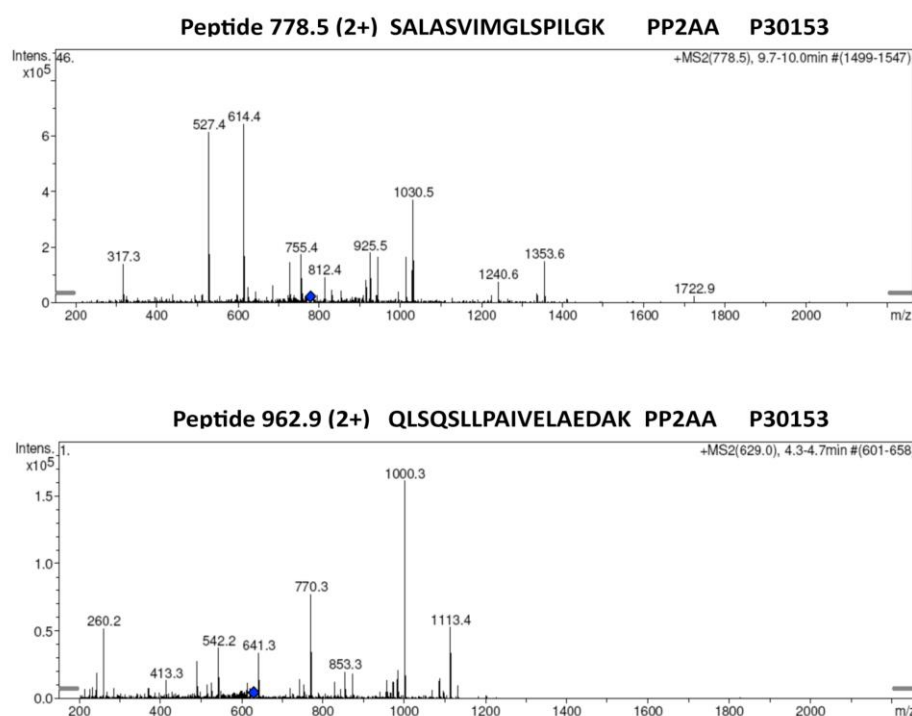


Figure S1. MS/MS spectra of the PP2A peptides SALASVIMGLSPILGK and QLSQSLPAIVELAEDAK detected by MRM in the immunoprecipitates.

Table S1. Categories of disease involving the tEBNA-LP partners

Categories of disease	Molecules	Numbers of molecules
Genetic Disorder	FGB, FGG, CP, HP, LDHA, LDHB, PFN1, SETDB1, DKC1, AGL, FN1, GARNL3, HSPE1, LAMA4, LOC57653, NOS2, OSBPL3, PTPN13/FAP1, TJP2, MLL, A2M.	21
Cancer	CP, EZR, FGG, FN1, HP, HSPE1, LAMA4, LDHA, NOS2, PFN1, DKC1, MLL, A2M, DIS3.	14
Neurological Disease	CP, FGG, GARNL3, HP, LDHA, LDHB, NOS2, PFN1, PTPN13/FAP1, SETDB1, TJP2, FN1, LAMA4, A2M.	14
Skeletal and Muscular Disorders	CP, FGG, HP, LDHA, LDHB, PFN1, SETDB1, FN1, NOS2, FGB, PPP2R1A, A2M.	11
Hematological Disease	FGB, FGG, LAMA4, FN1, PPP2R1A, NOS2, OSBPL3, DIS3, MLL.	9

