

Supplementary Figures

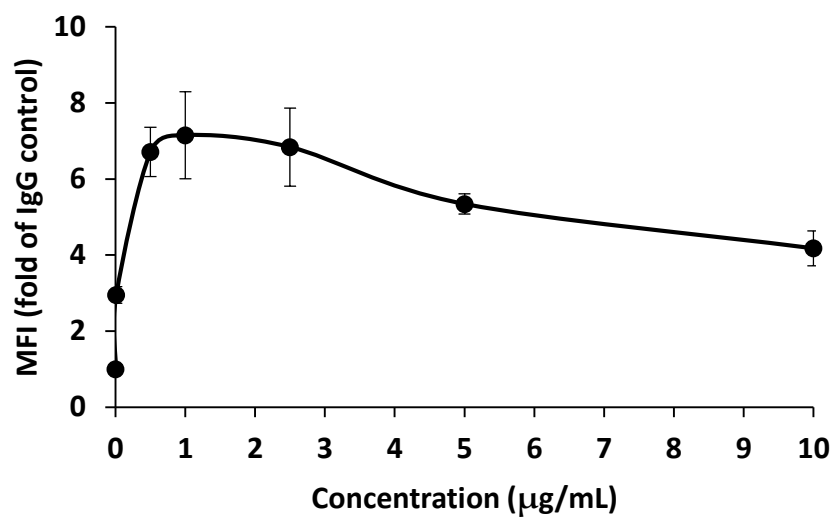


Figure S1. Vx1000R binding curve on MM.1S cell line.

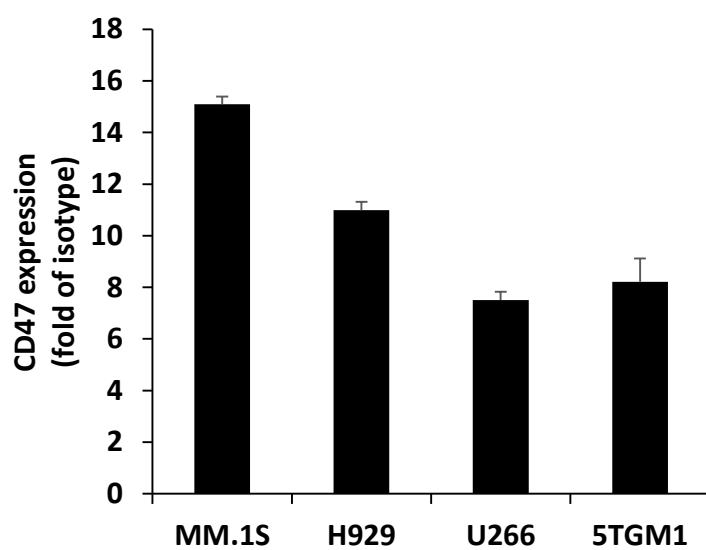


Figure S2. CD47 protein expression of MM cell lines under 2D normoxic (21% O_2) condition.

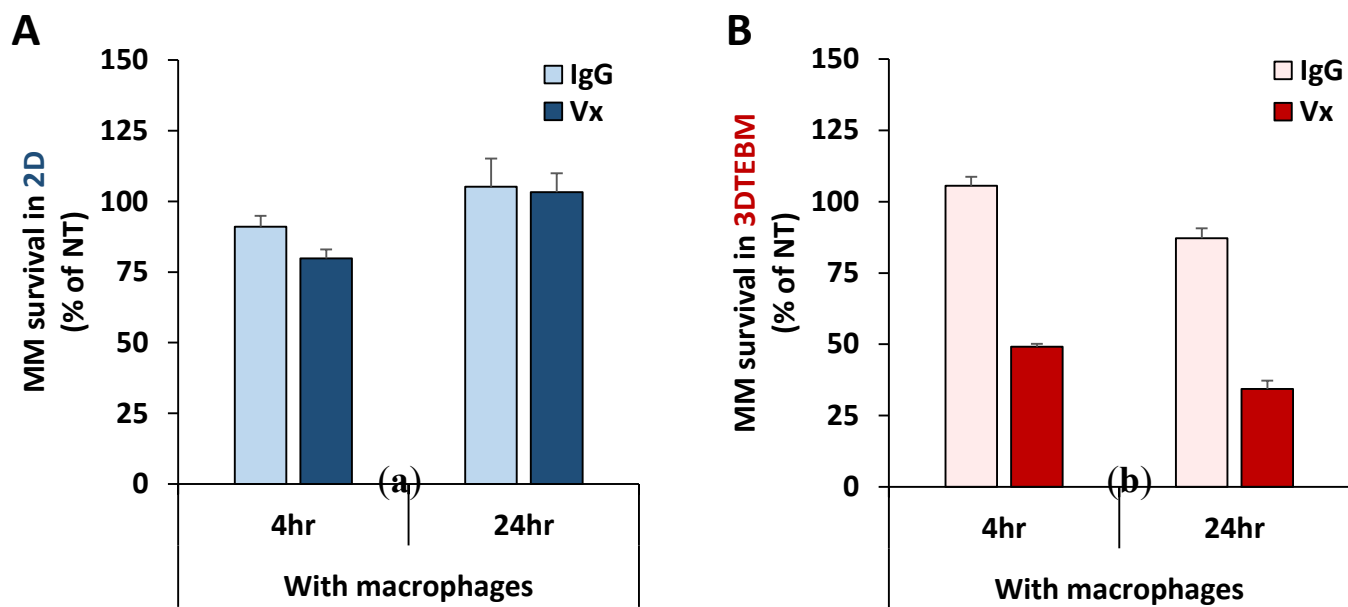


Figure S3. The effect of Vx1000R treatment in MM survival in MM-macrophage co-cultures at 4 h and 24 h in (a) 2D and (b) 3DTEBM cultures.