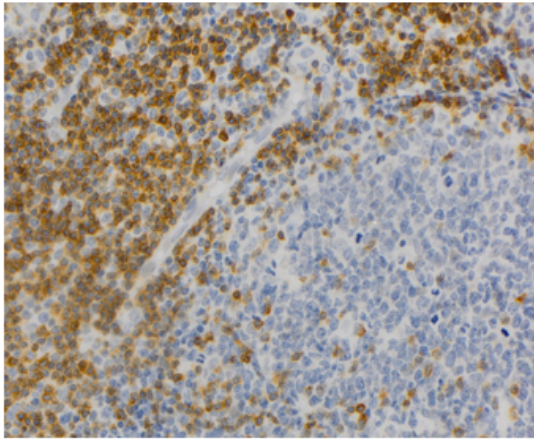
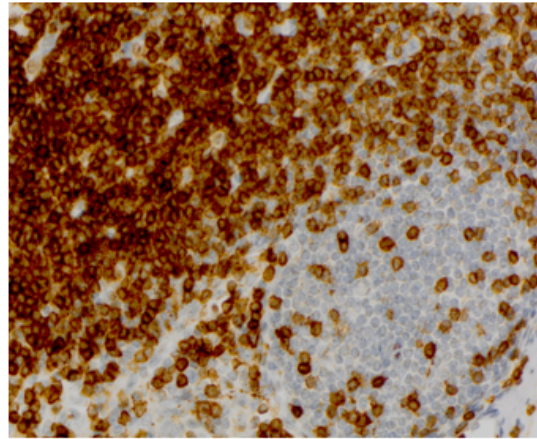


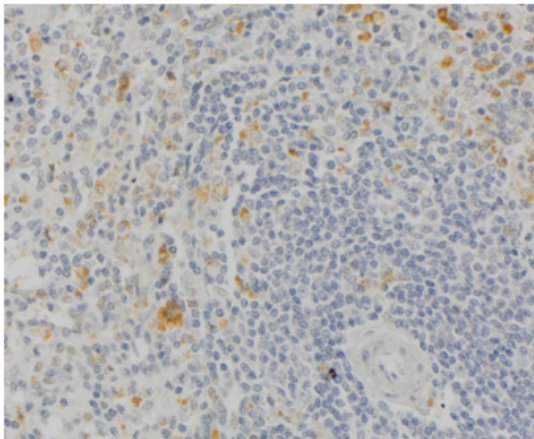
CD3 + CTL - Tonsil



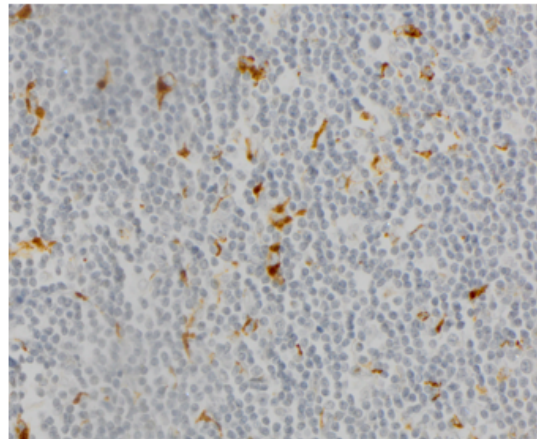
CD3 + CTL – Lymph Node



CD68 + CTL - Spleen



CD68 + CTL – Lymph Node



Supplemental Figure S1. Progression-free survival analysis of 213 patients with bladder cancer. Progression-free survival according to immunostaining status of > 5 targets from diagnostic signature, 3-5 targets from diagnostic signature and < 3 targets from diagnostic signature with or without infiltration of CD3+ and CD68+ cells.