

1 **Table S1.** Relative expression levels of miRNAs and respective fold changes in urinary sediments  
 2 from Tf and PCa groups using the sub-cohort of patients with PSA levels  $\leq 10$  ng/mL ( $n = 34$ ).

miRNA	Median relative expression level ( $\times 10^{-3}$ )		Fold change PCa vs Tf	<i>p</i> value
	in Tf	in PCa		
miR-125b	31.97	25.32	0.79	0.845
miR-145	16.23	9.68	0.60	0.183
miR-155	15.59	23.52	1.51	0.891
miR-16	663.17	314.83	0.47	0.017
miR-195	292.72	133.56	0.46	0.045
miR-200c	713.34	741.45	1.04	0.593
miR-205	34.88	42.42	1.22	0.593
miR-21	652.71	357.36	0.55	0.183
miR-218	2.45	1.67	0.68	0.593
miR-26a	315.02	162.06	0.51	0.209
miR-375	55.36	55.83	1.01	0.845
miR-96	0.29	0.08	0.28	0.209

3 Depicted are the median relative transcript levels of the evaluated miRNAs (normalized to the geometric mean  
 4 of reference RNAs RNU44 and RNU48) in Tf and PCa groups as well as the fold change in the PCa samples  
 5 compared to the Tf group. *p* values were calculated by the Mann–Whitney U test and then corrected for multiple  
 6 comparisons by the Benjamini-Hochberg method. miRNA/miR: microRNA, PCa: prostate cancer, PSA: prostate  
 7 specific antigen, Tf: tumor-free

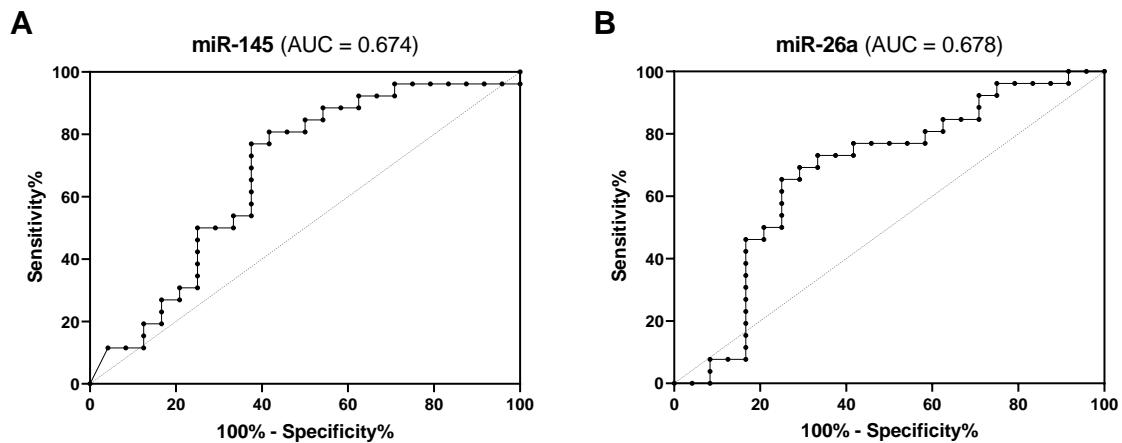
8  
 9

10 **Table S2.** Assessment of the diagnostic power of PSA, PSAD and miRNA expression levels in urinary  
 11 sediments by ROC curve analyses using the whole patient cohort ( $n = 50$ ).

Parameter	AUC	95% CI	<i>p</i> value
PSA	0.564	0.403-0.726	0.656
PSAD	0.708	0.562-0.853	0.031
miR-125b	0.527	0.362-0.693	0.851
miR-145	0.674	0.519-0.829	0.070
miR-155	0.502	0.338-0.665	0.985
miR-16	0.744	0.599-0.888	0.012
miR-195	0.729	0.587-0.871	0.017
miR-200c	0.546	0.376-0.717	0.794
miR-205	0.526	0.357-0.694	0.851
miR-21	0.628	0.468-0.788	0.217
miR-218	0.532	0.369-0.695	0.851
miR-26a	0.678	0.521-0.834	0.070
miR-375	0.513	0.346-0.680	0.928
miR-96	0.609	0.451-0.767	0.306

12 *p* values calculated by the ROC curve analysis were corrected for multiple comparisons by the Benjamini-  
 13 Hochberg method. 95% CI: 95% confidence interval, AUC: area under the curve, miRNA/miR: microRNA, PSA:  
 14 prostate specific antigen, PSAD: prostate specific antigen density, ROC: receiver operating characteristic

15  
 16



17

18 **Figure S1.** ROC curve analysis of (A) miR-145 and (B) miR-26a expression levels in urinary sediments  
 19 using the whole study cohort ( $n = 50$ ). AUC: area under the curve, miR: microRNA, ROC: receiver  
 20 operating characteristic

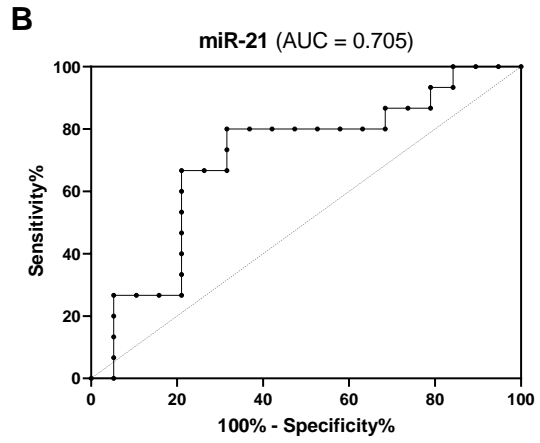
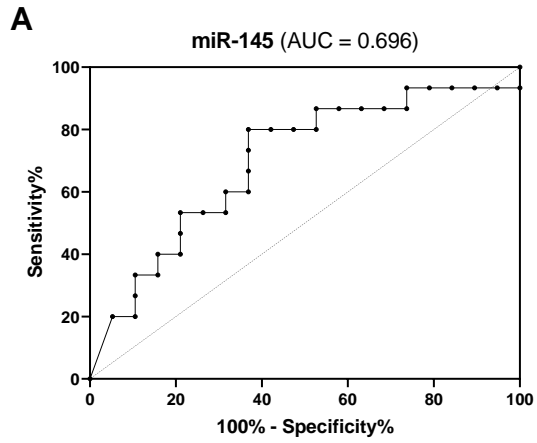
21  
 22

23 **Table S3.** Assessment of the diagnostic power of PSA, PSAD and miRNA expression levels in urinary  
 24 sediments by ROC curve analyses using the sub-cohort of patients with PSA levels  $\leq 10$  ng/mL ( $n =$   
 25 34).

Parameter	AUC	95% CI	<i>p</i> value
PSA	0.621	0.431-0.811	0.379
PSAD	0.595	0.394-0.795	0.524
miR-125b	0.530	0.330-0.730	0.813
miR-145	0.696	0.514-0.879	0.117
miR-155	0.516	0.315-0.716	0.876
miR-16	0.818	0.659-0.976	0.008
miR-195	0.772	0.614-0.930	0.022
miR-200c	0.579	0.384-0.774	0.547
miR-205	0.579	0.380-0.778	0.547
miR-21	0.705	0.522-0.888	0.109
miR-218	0.575	0.380-0.771	0.547
miR-26a	0.674	0.484-0.863	0.155
miR-375	0.530	0.332-0.727	0.813
miR-96	0.674	0.488-0.859	0.155

26 *p* values calculated by the ROC curve analysis were corrected for multiple comparisons by the Benjamini-  
 27 Hochberg method. 95% CI: 95% confidence interval, AUC: area under the curve, miRNA/miR: microRNA, PSA:  
 28 prostate specific antigen, PSAD: prostate specific antigen density, ROC: receiver operating characteristic

29  
 30



31

32

33

34

**Figure S2.** ROC curve analysis of (A) miR-145 and (B) miR-21 expression levels in urinary sediments using the sub-cohort of patients with PSA levels  $\leq 10$  ng/mL ( $n = 34$ ). AUC: area under the curve, miR: microRNA, ROC: receiver operating characteristic