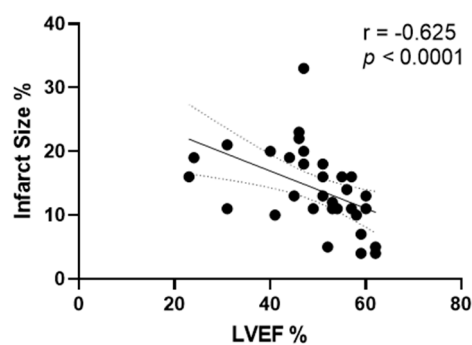
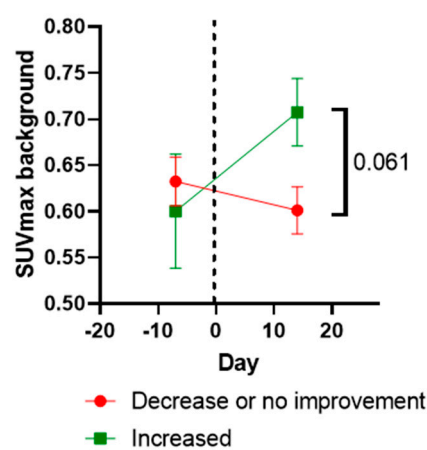


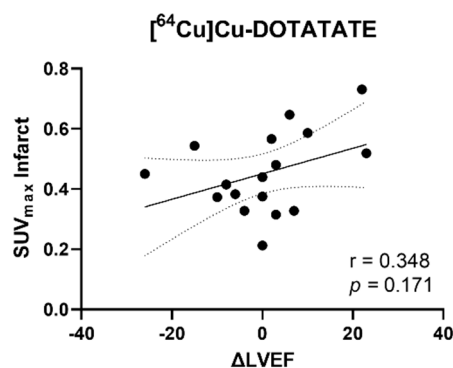
Supplementary



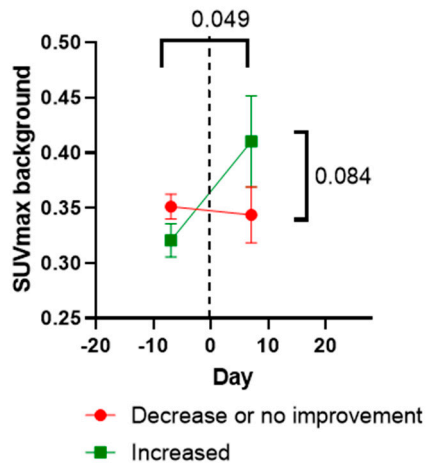
S1. Correlation between infarct area and LVEF.



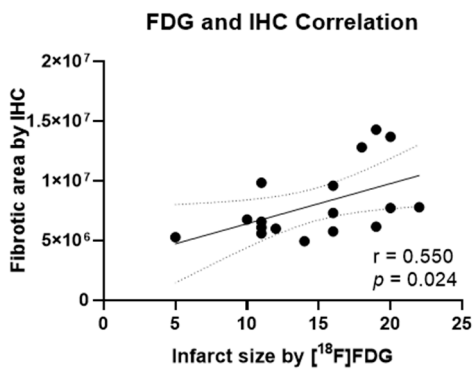
S2 [⁶⁸Ga]Ga-RGD uptake in the remote area of the heart .



S3 [⁶⁴Cu]Cu-DOTATATE uptake correlation with ΔLVEF.



S4 [^{64}Cu]Cu-DOTATATE uptake in the remote area of the heart.



S5 Correlation between infarct size by 2- ^{18}F FDG blackout and fibrotic area on immunohistochemistry (IHC) by Masson's Trichrome.