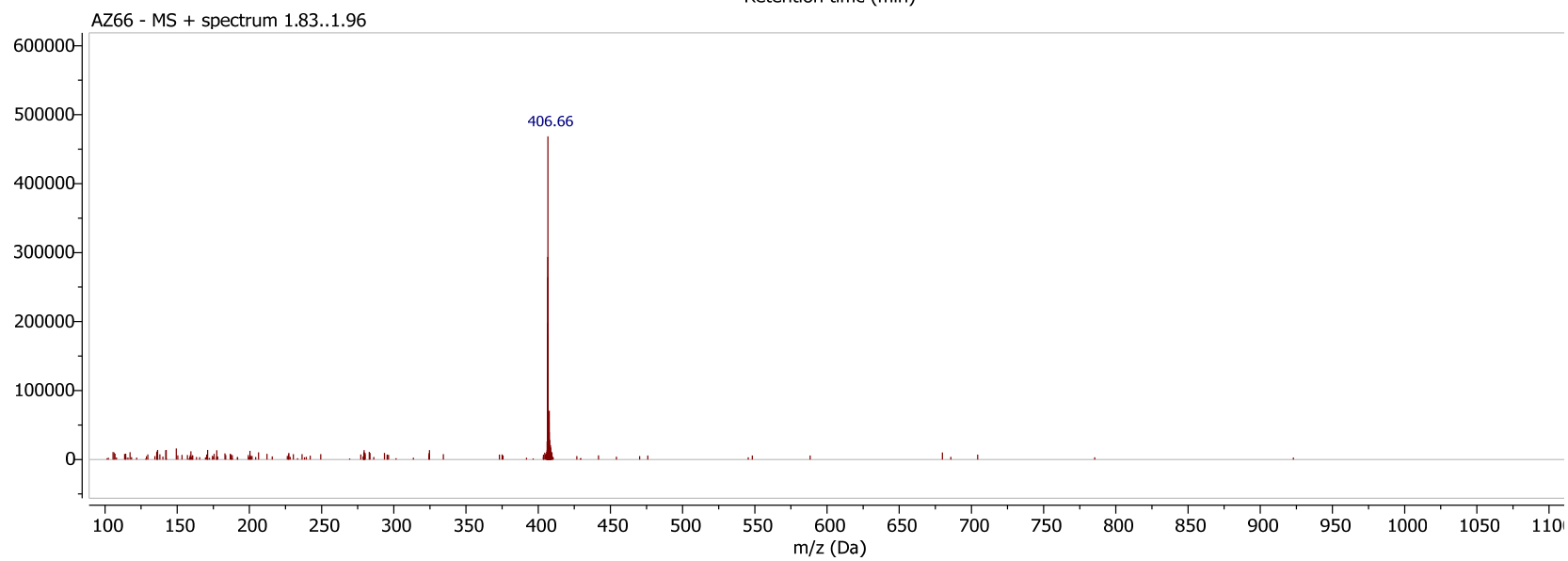
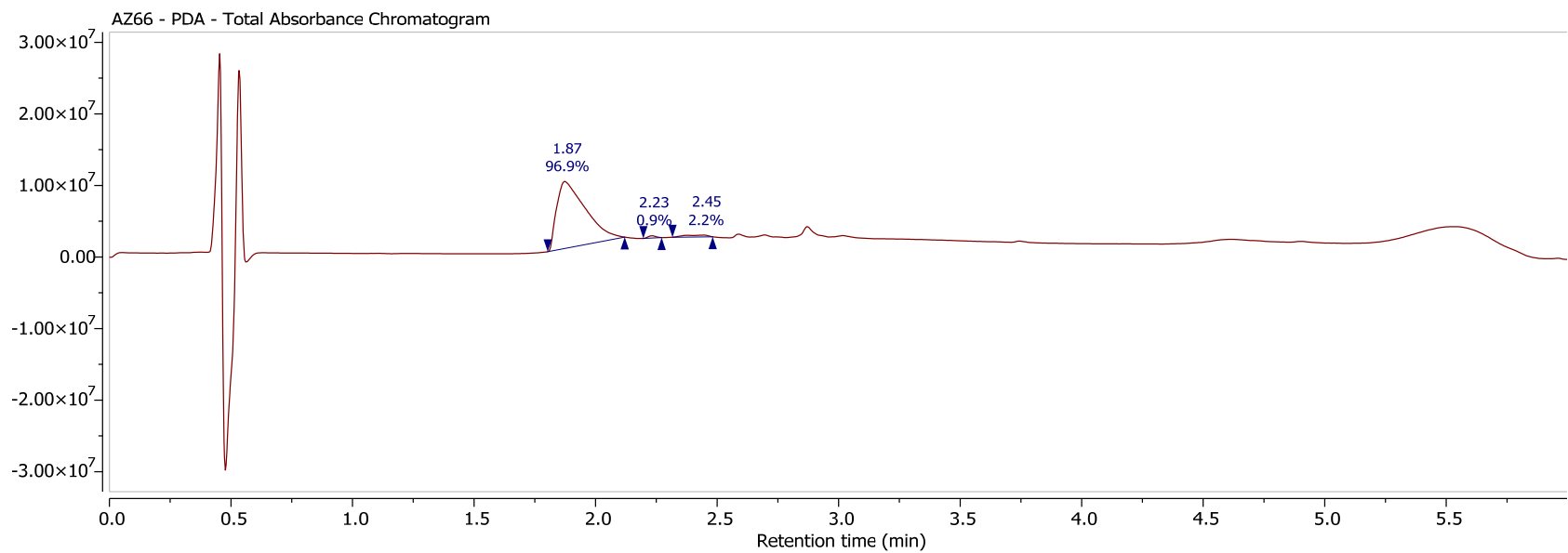


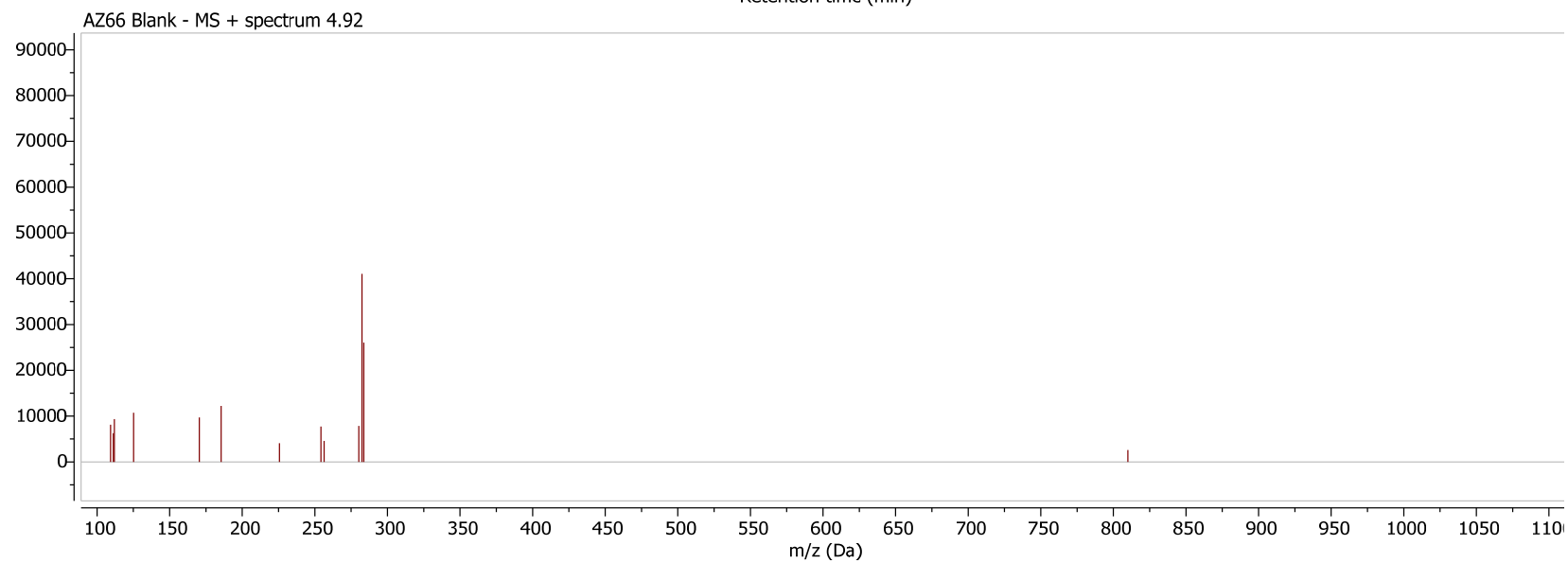
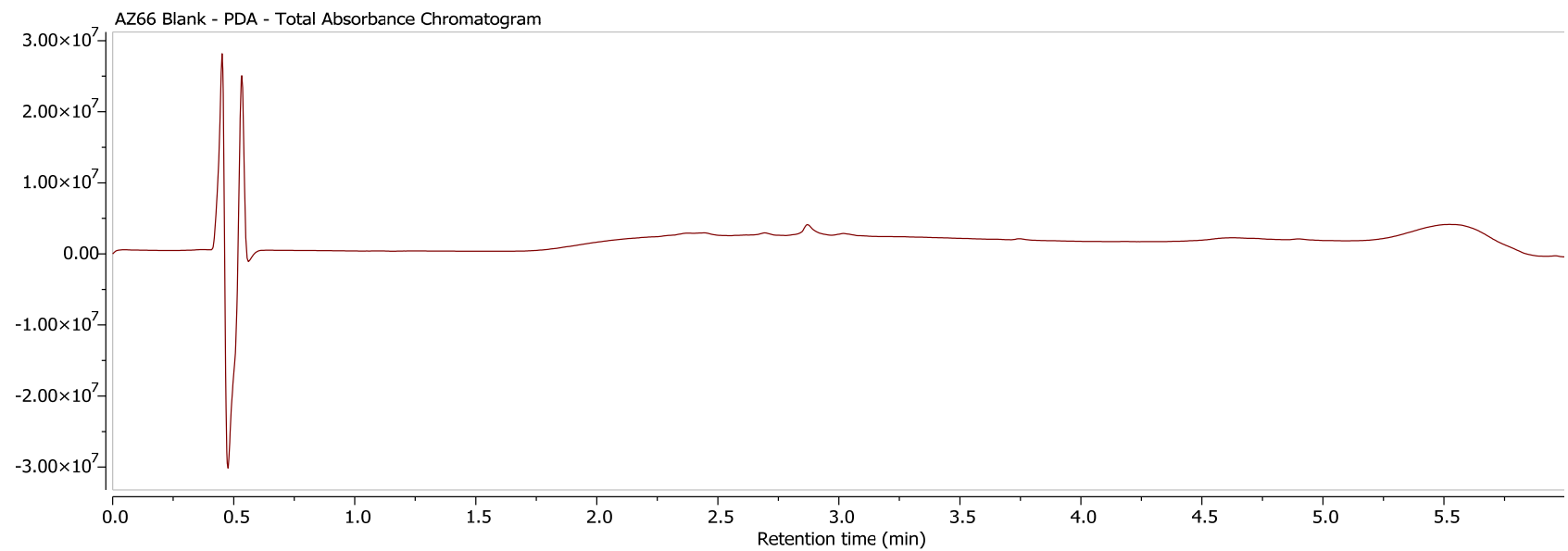
LCMS traces of tested compounds with peak purity

LCMS method:

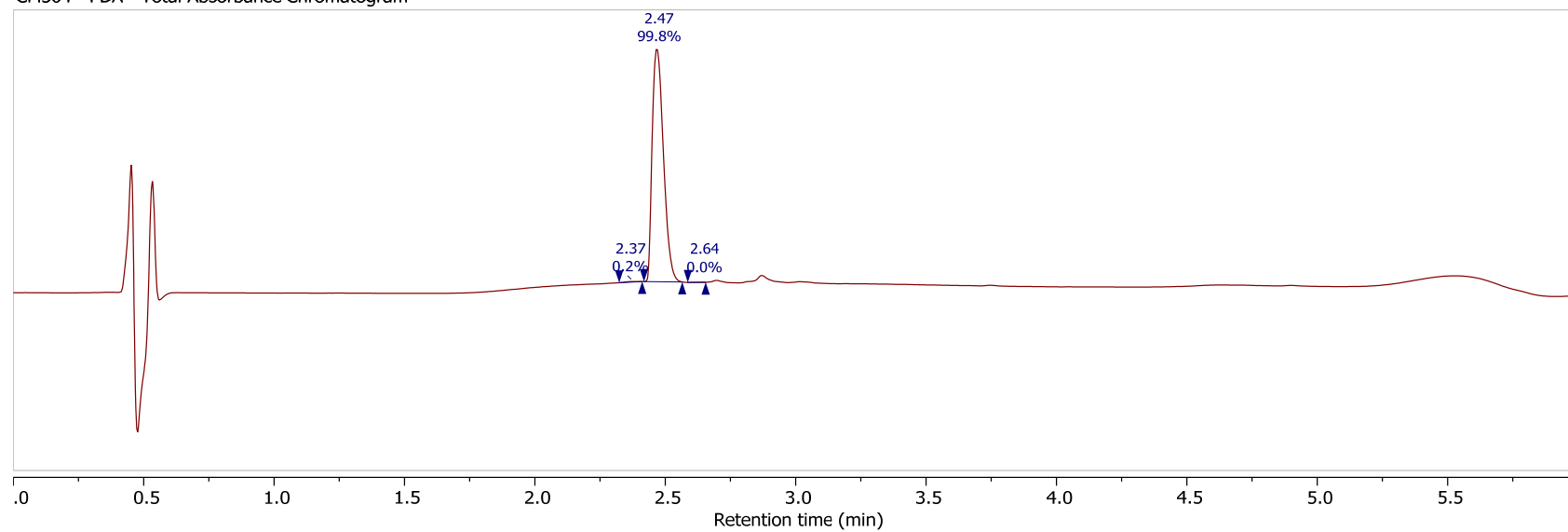
Solvent A: ACN (0.1 % FA); Solvent B: Water (0.1% FA);

Time (min)	Flow (ml/min)	%A	%B
Initial	0.300	10.0	90.0
0.50	0.300	10.0	90.0
3.50	0.300	100.0	0.0
4.00	0.300	100.0	0.0
4.50	0.300	10.0	90.0
6.00	0.300	10.0	90.0





CM304 - PDA - Total Absorbance Chromatogram



CM304 - MS + spectrum 2.45..2.49

