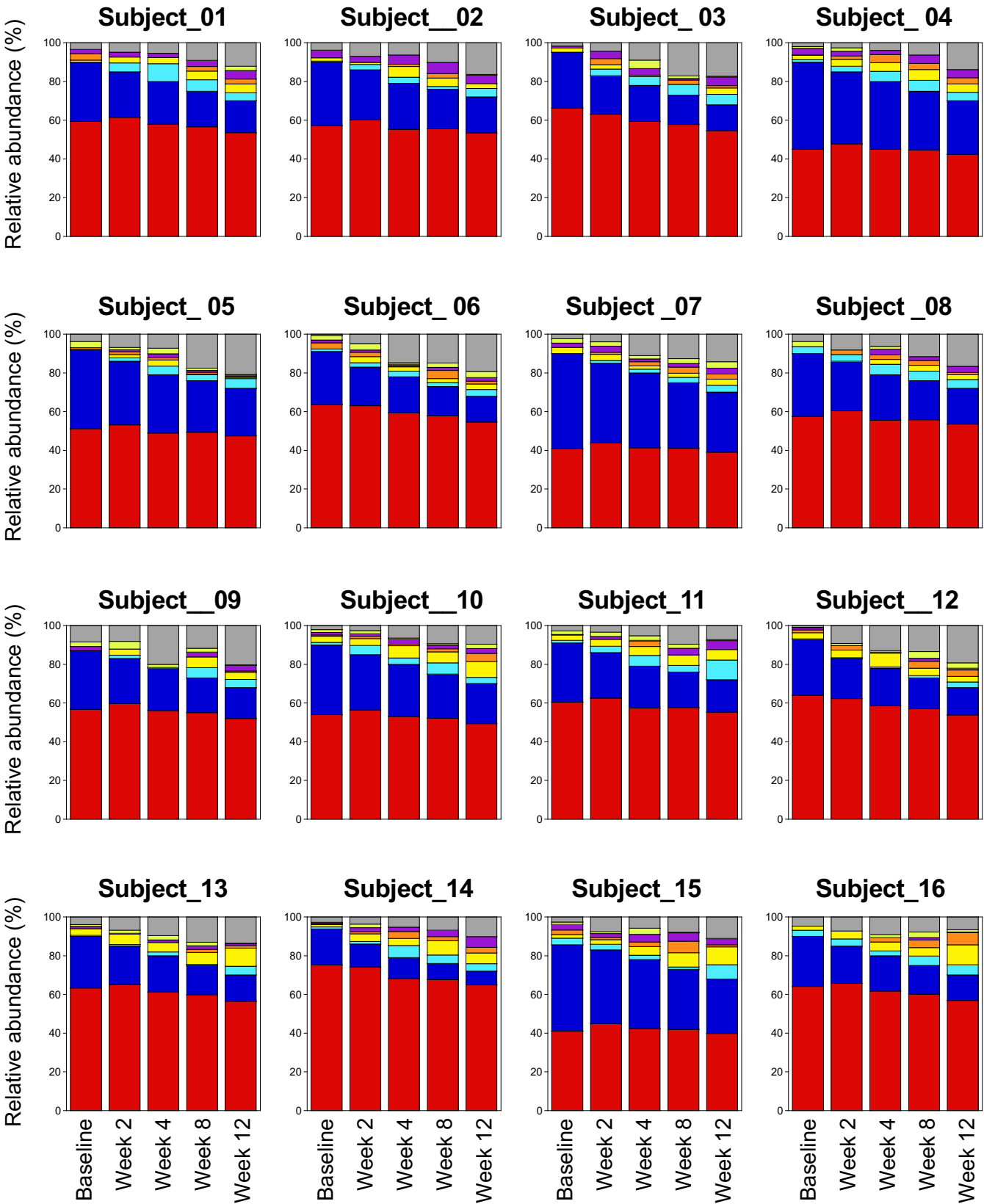
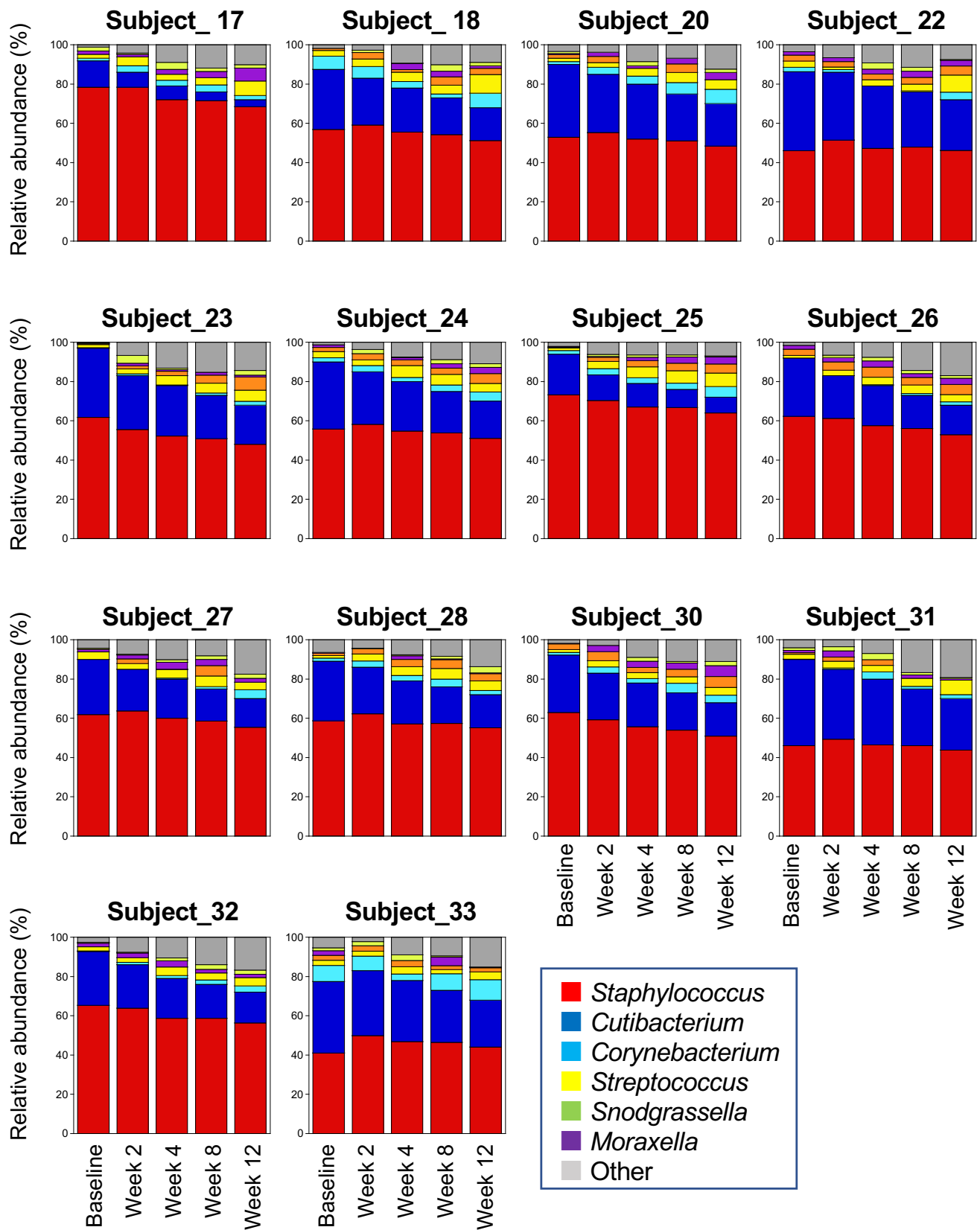


Figure S1. Fungal microbiome of the lesional site of 30 patients with atopic dermatitis after administration of dupilumab. Information on 10 healthy individuals is also included. Genera with a relative abundance >2% are shown.

Patients with atopic dermatitis





Healthy individuals

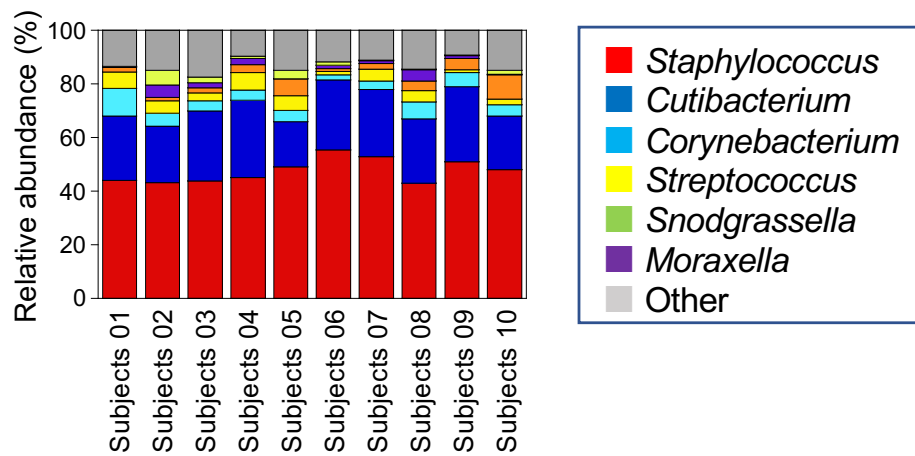
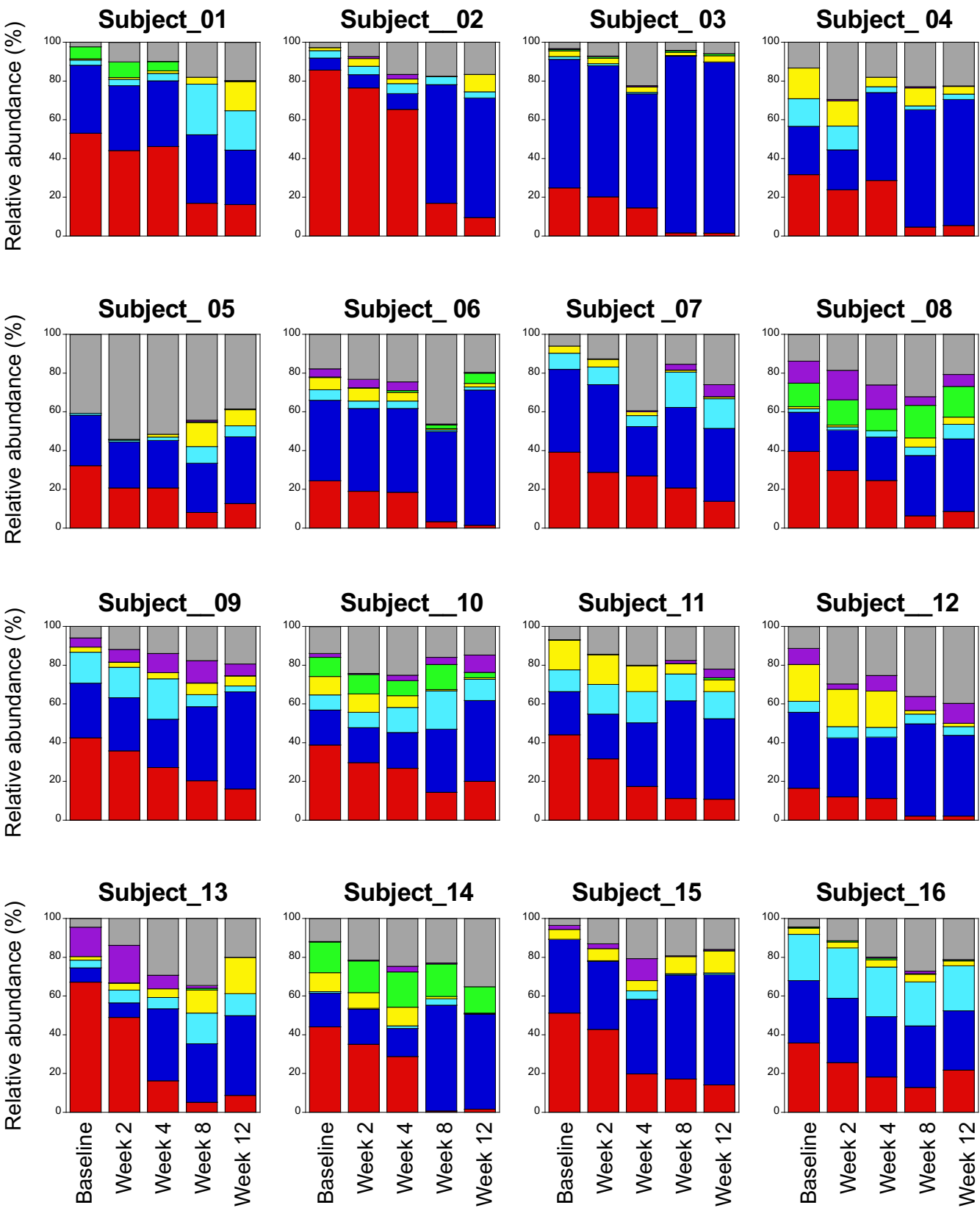
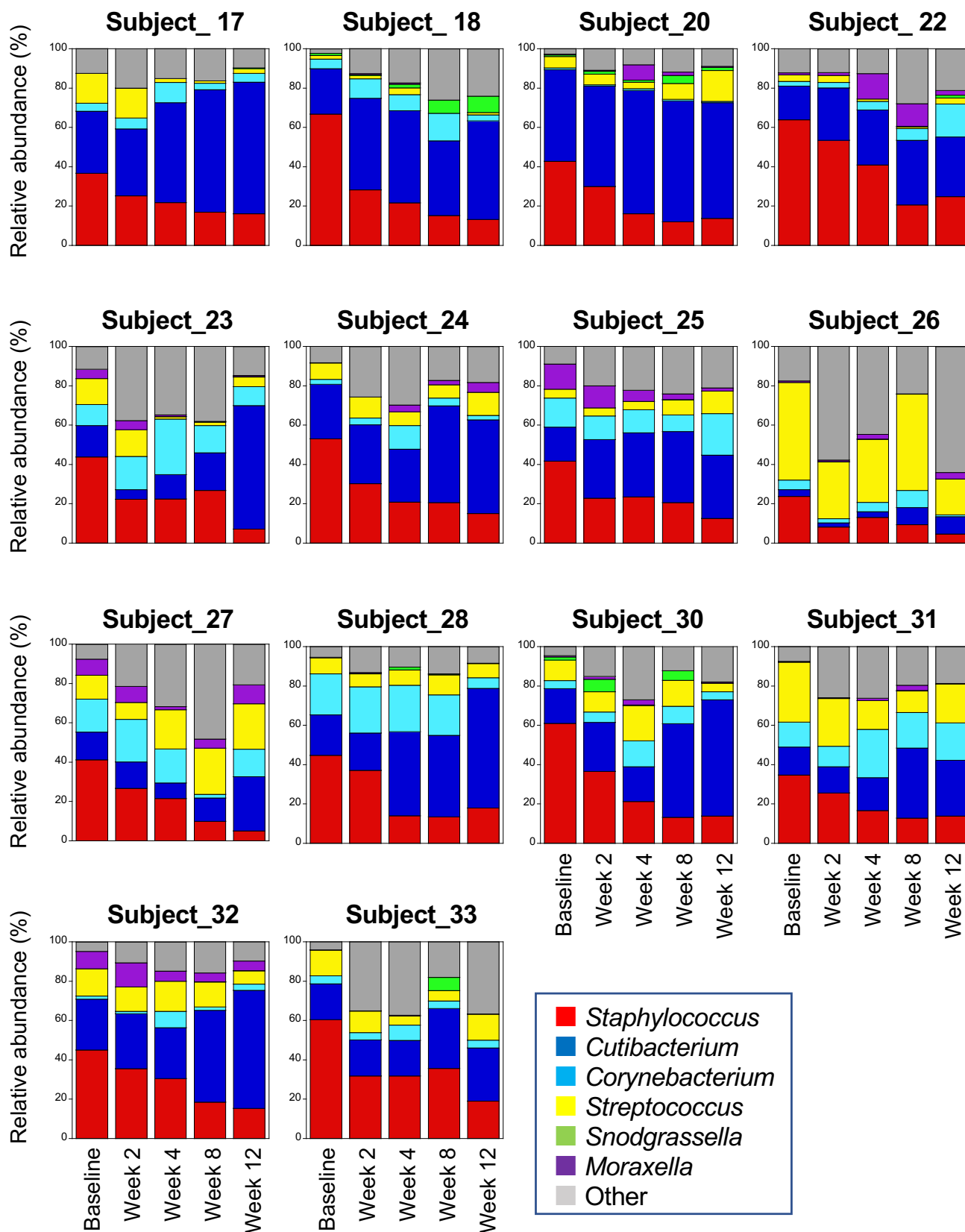


Figure S2. Bacterial microbiome of the lesional site of 30 patients with atopic dermatitis after administration of dupilumab. Information on 10 healthy individuals is also included. Genera with a relative abundance >3% are shown.

Patients with atopic dermatitis





Healthy individuals

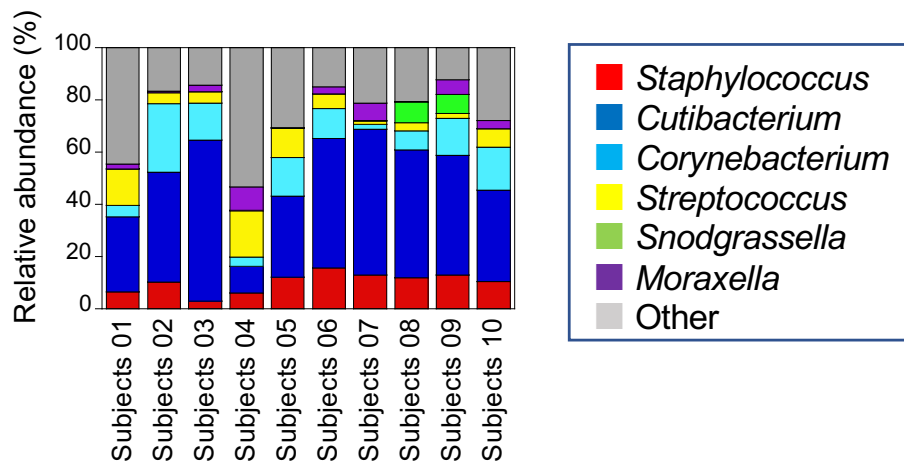


Figure S3. Correlation of relative abundance between genera *Staphylococcus* and *Corynebacterium*. A good correlation with $r = 0.5$ was observed. Data were calculated from all sampling points ($n = 150$).

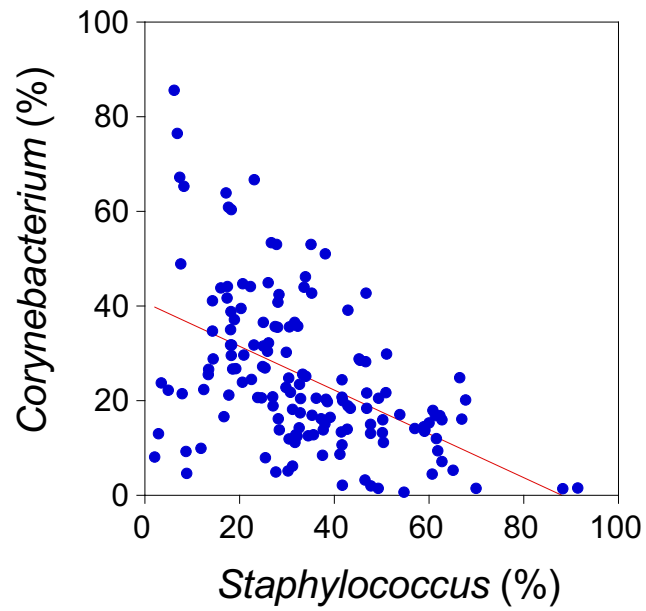


Figure S4. Comparison of colonization levels by *Malassezia* or *Staphylococcus aureus* between patients who achieved EASI-75, and those who did not. NS, not significant; Mann–Whitney U test. EASI, Eczema Area and Severity Index.

