

Supplementary Materials

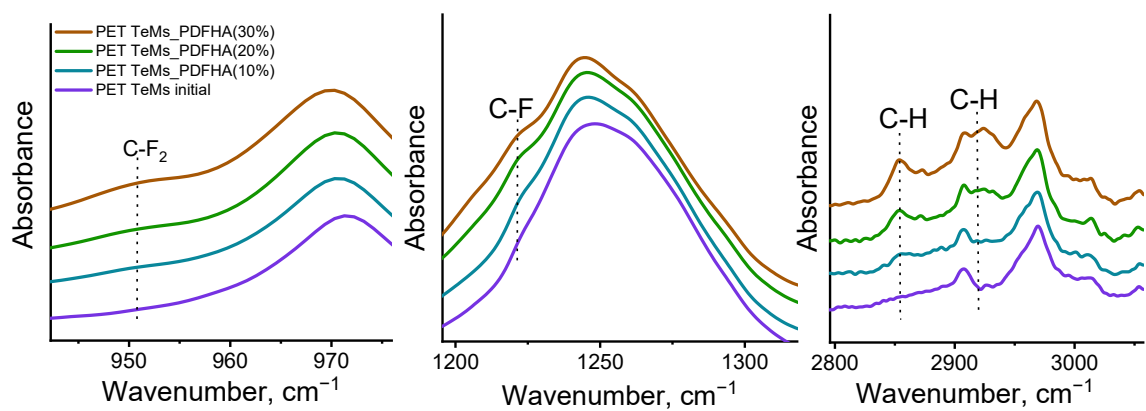


Figure S1. FTIR spectra of initial and grafted membranes at different monomer concentration.

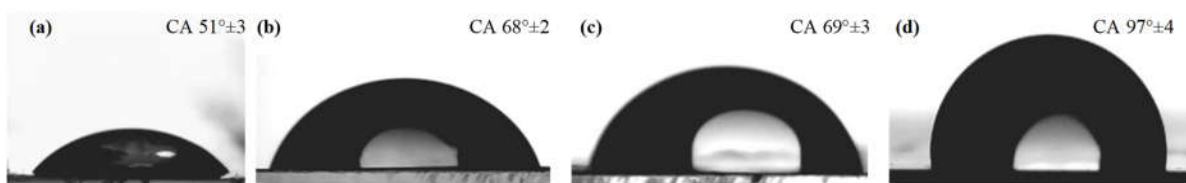


Figure S2. Water contact angle for initial (a) and modified PET TeMs with 10% DFHA (b), 20% DFHA (c) and 30% DFHA (d)

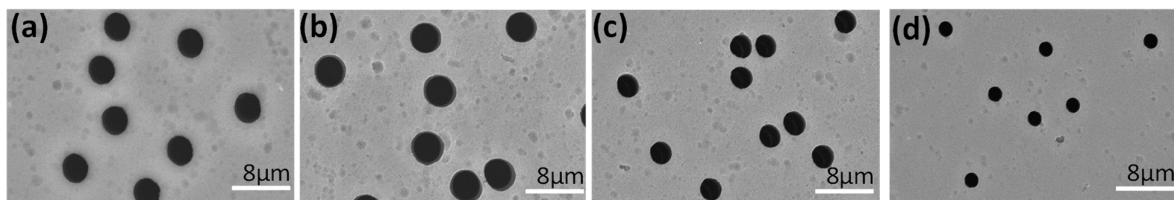


Figure S3. SEM images PET TeMs before (a) and after 60 min grafting The monomer concentration: 10% (b), 20% (c) and 30% (d)