

Supplementary Materials: Antibiofouling performance by Polyethersulfone membranes cast with oxidized multiwalled carbon nanotubes and Arabic Gum

Firstname Lastname ¹, Firstname Lastname ² and Firstname Lastname ^{2,*}

Ahmad Najjar ^{1,*}, Souhir Sabri ², Rashad Al-Gaashani ², Muataz Ali Atieh ² and Viktor Kochkodan ²

¹ Hamad Bin Khalifa University HBKU, College of Life and Health Sciences, Qatar; ahmnajjar@hbku.edu.qa

² Qatar Environment and Energy Research Institute (QEERI) Hamad Bin Khalifa University (HBKU). mhussien@hbku.edu.qa

* Correspondence: ahmnajjar@mail.hbku.edu.qa

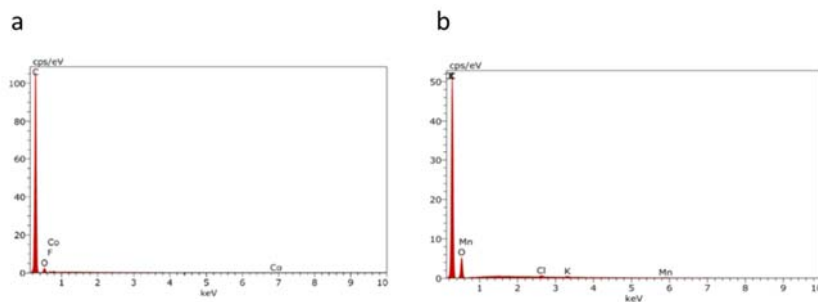


Figure S1. EDX mapping for MWCNT (a) and OMWCNT (b).

Commented [M1]: Please replace with a sharper image.

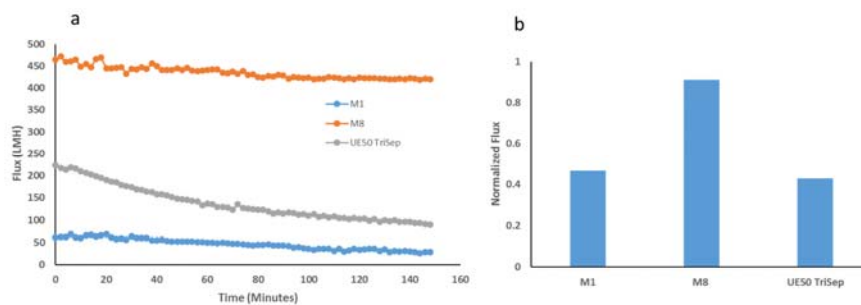


Figure S2. Flux readings for synthesized and UE50 TriSep membranes over a prolonged period of real TSE filtration (a). Normalized flux data for each of the three membrane samples (b).

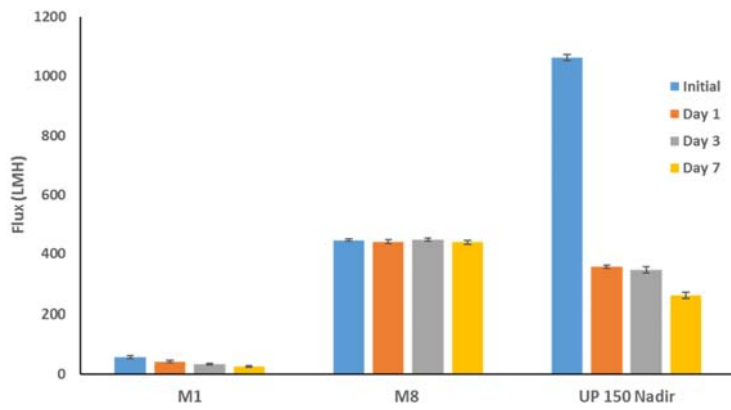


Figure S3. Membrane flux before incubation with real TSE and post incubation at different time points.



© 2019 by the authors. Submitted for possible open access publication under the terms and conditions of the Creative Commons Attribution (CC BY) license (<http://creativecommons.org/licenses/by/4.0/>).