

Frictional Pressure Drop and Cost Savings for Graphene Nanoplatelets Nanofluids in Turbulent Flow Environments

Reem Sabah Mohammad ¹, Mohammed Suleman Aldlemy ², Mu'ataz S. Al Hassan ³, Aziz Ibrahim Abdulla ⁴, Miklas Scholz ^{5,6,7,8,*} and Zaher Mundher Yaseen ^{9,10,*}

¹ Department of Business Administration, Faculty of Administration and Economic, University of Misan, Amarah 62001, Iraq; reem-sabah@uomisan.edu.iq

² Department of Mechanical Engineering, College of Mechanical Engineering Technology, Benghazi 11199, Libya; maldlemy@ceb.edu.ly

³ Division of Advanced Nanomaterial Technologies, Scientific Research Center, Al-Ayen University, Nasiriyah 64001, Iraq; muataz@alayen.edu.iq

⁴ Environmental Engineering Department, College of Engineering, Tikrit University, 34001, Iraq; a.abdulla@tu.edu.iq

⁵ Division of Water Resources Engineering, Faculty of Engineering, Lund University, Lund 221 00, Sweden

⁶ School of Civil Engineering and the Built Environment, Department of Civil Engineering Science, University of Johannesburg, Kingsway Campus, Johannesburg 2092, South Africa

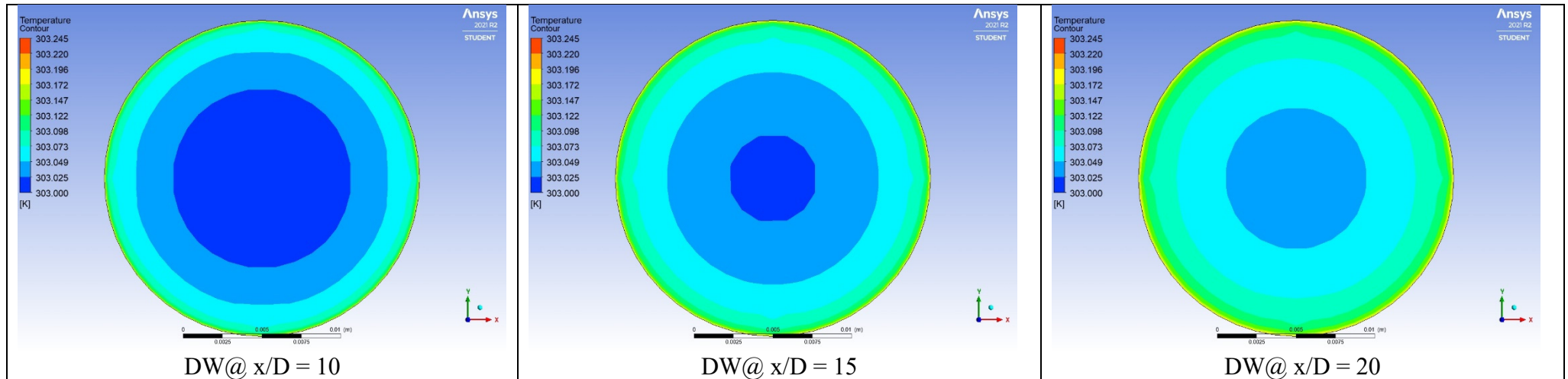
⁷ Department of Town Planning, Engineering Networks and Systems, South Ural State University (National Research University), Chelyabinsk 454080, Russia

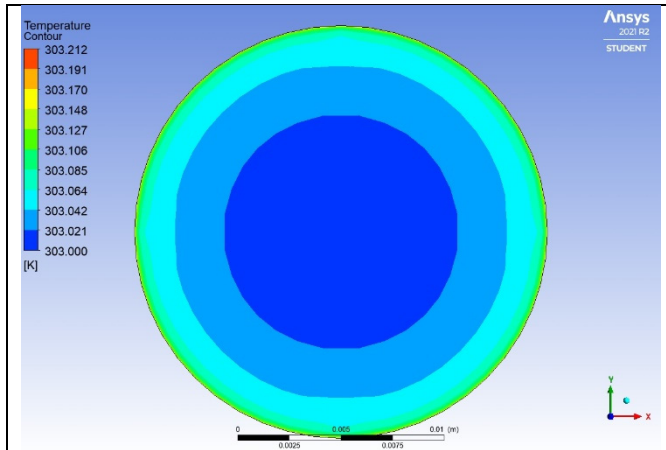
⁸ Institute of Environmental Engineering, Wroclaw University of Environmental and Life Sciences, Wroclaw 50375, Poland

⁹ New era and development in civil engineering research group, Scientific Research Center, Al-Ayen University, Nasiriyah 64001, Iraq

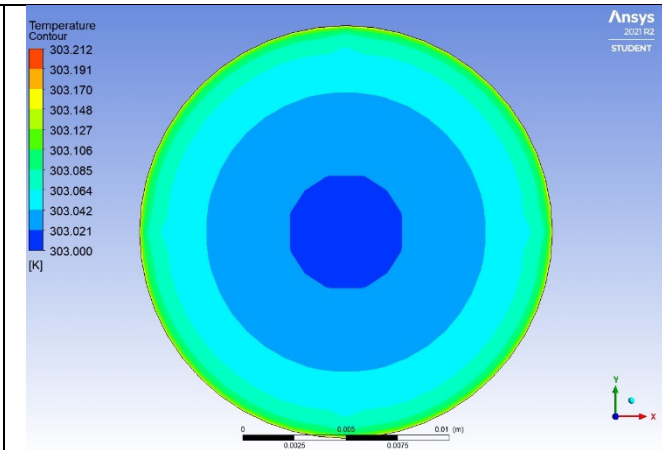
¹⁰ College of Creative Design, Asia University, Taichung City, Taiwan

* Correspondence: miklas.scholz@tvrl.lth.se (M.S.); yaseen@alayen.edu.iq (Z.M.Y.)

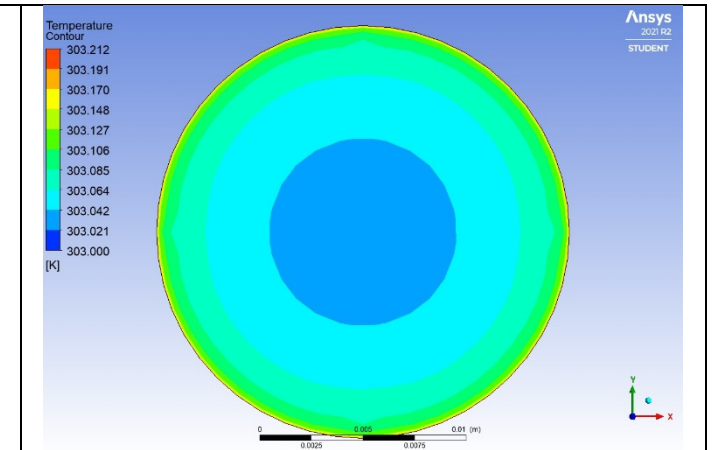




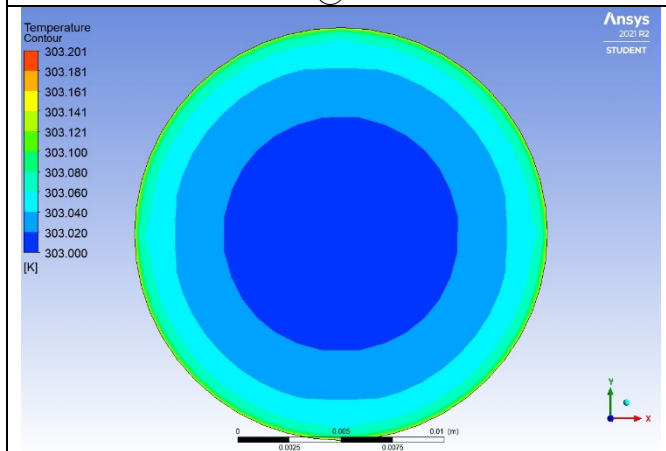
0.025% @ $x/D = 10$



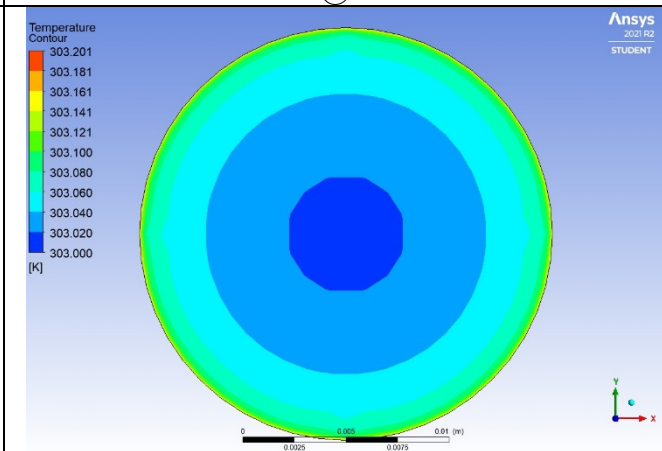
0.025% @ $x/D = 15$



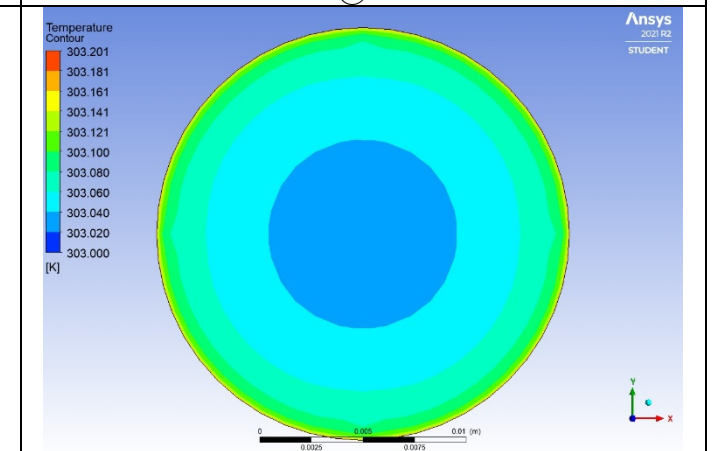
0.025% @ $x/D = 20$



0.05% @ $x/D = 10$



0.05% @ $x/D = 15$



0.05% @ $x/D = 20$

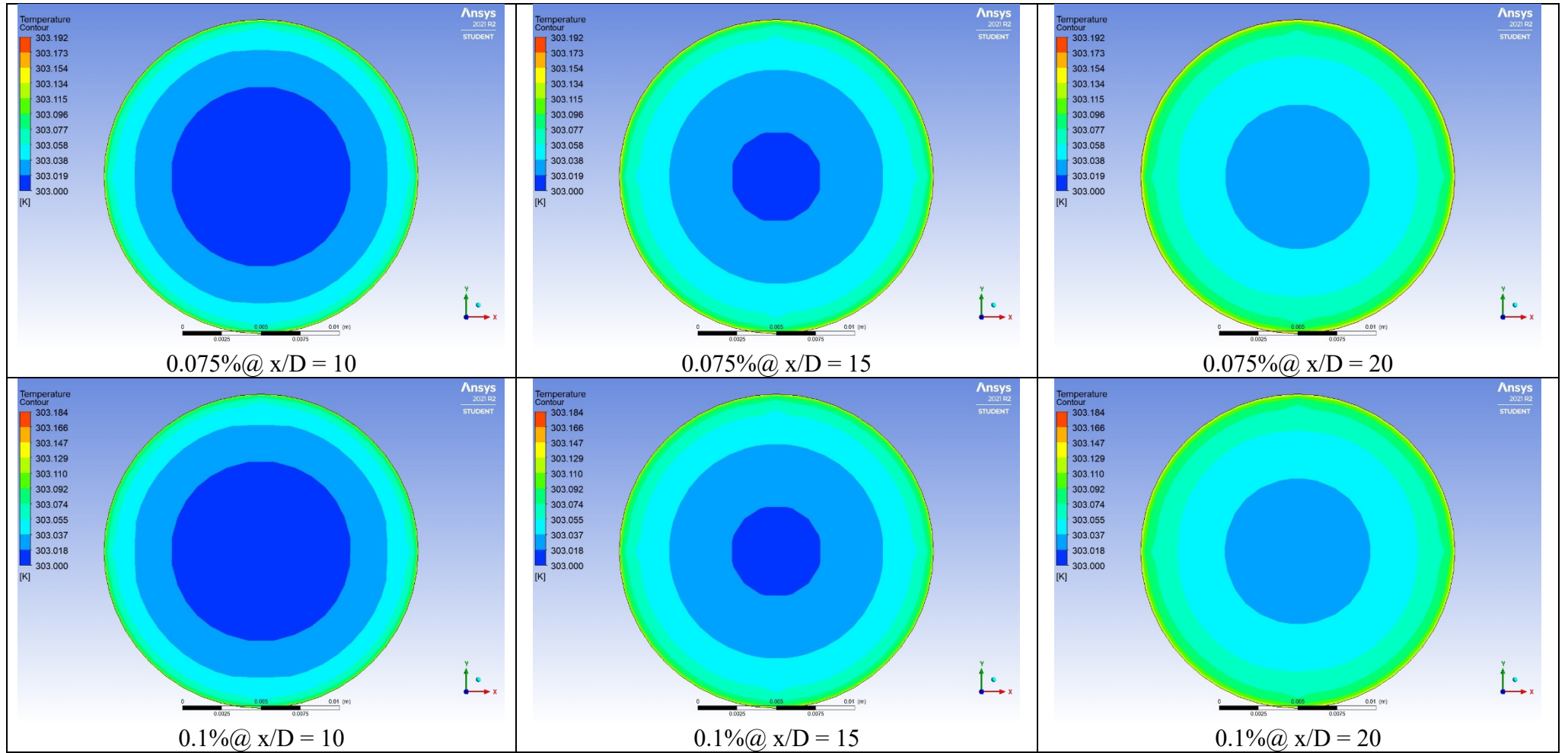
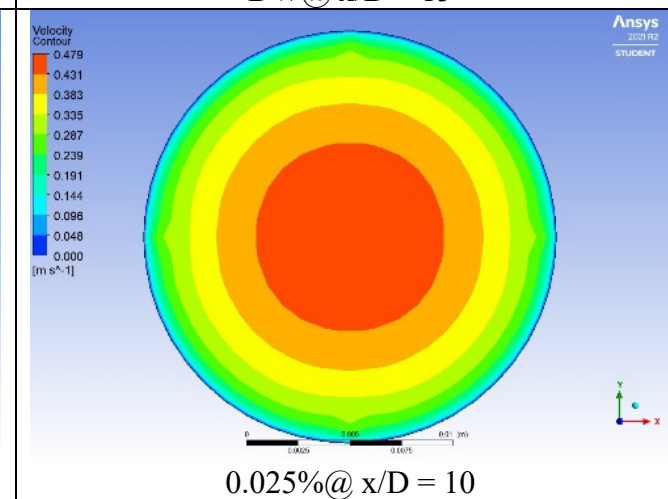
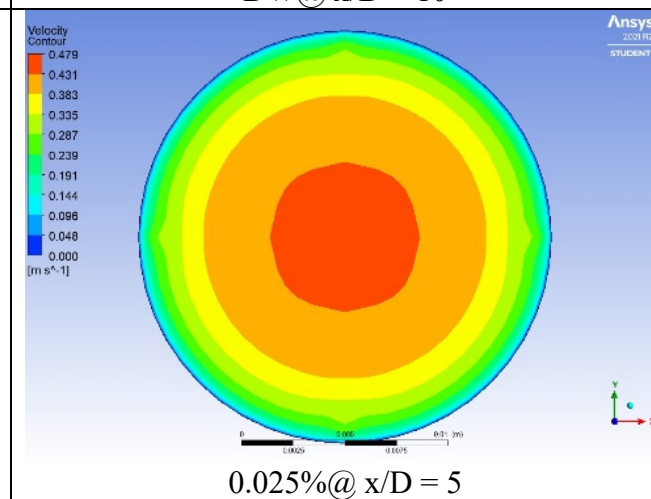
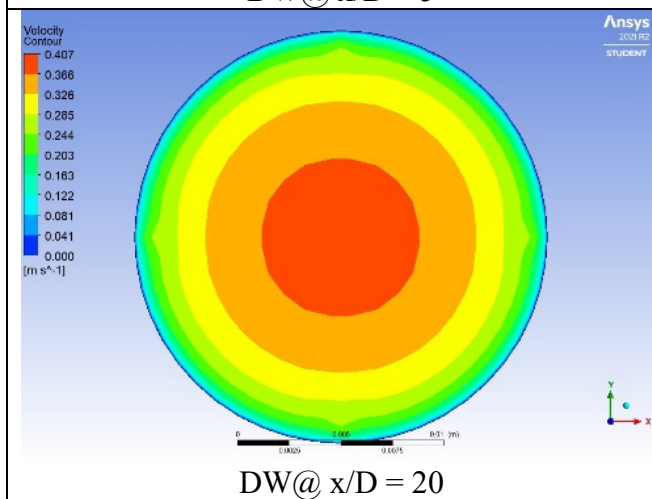
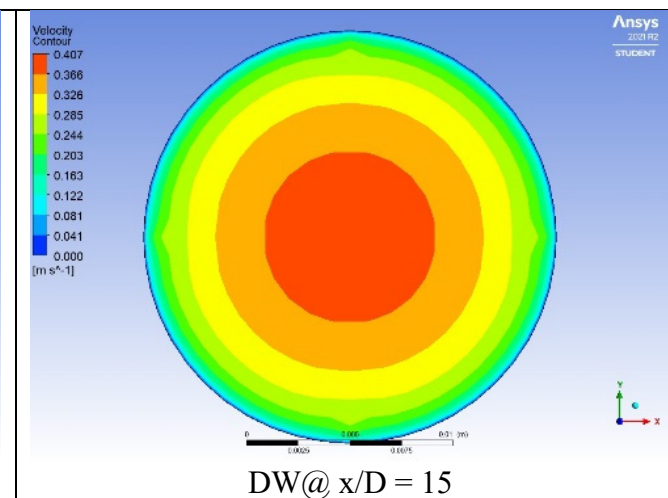
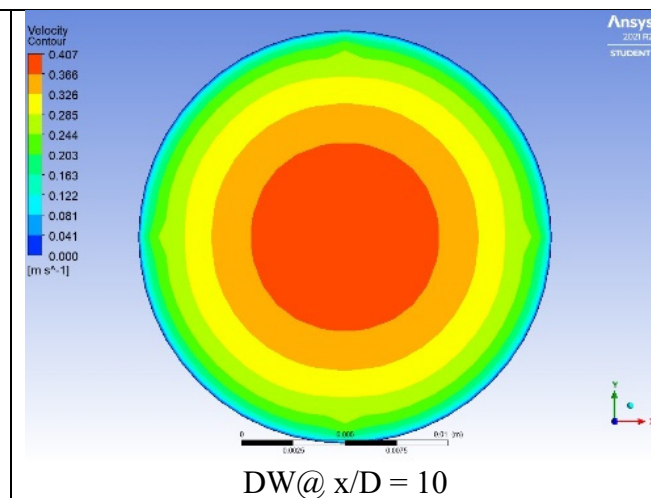
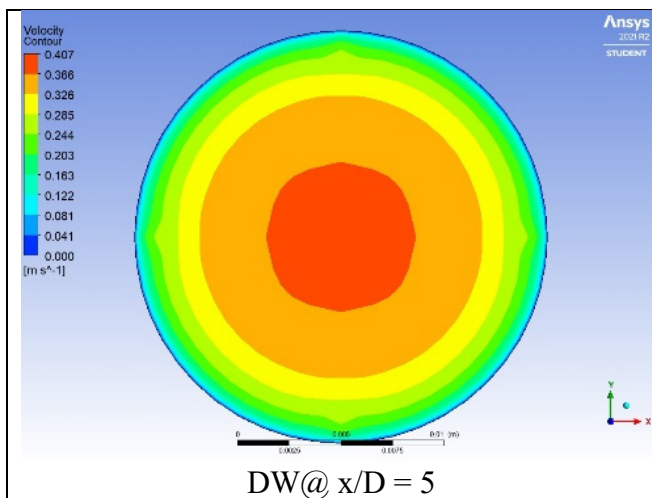
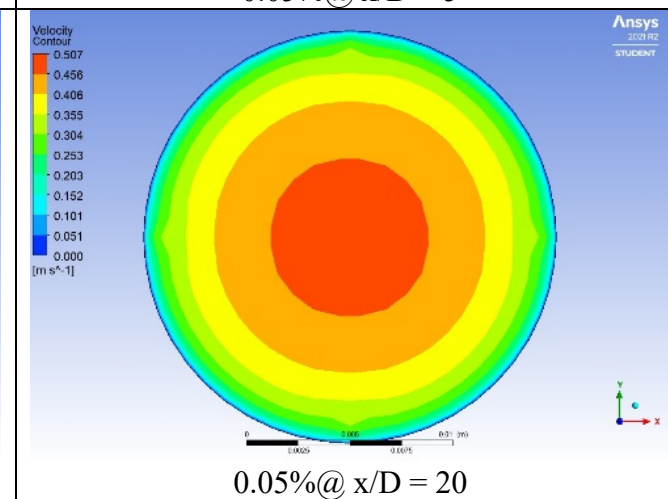
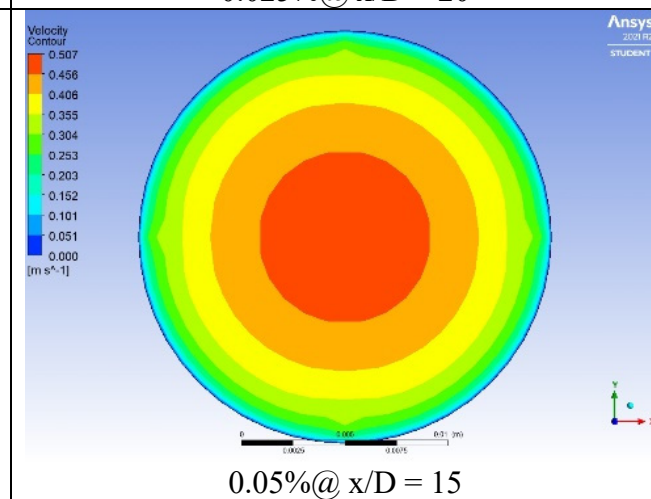
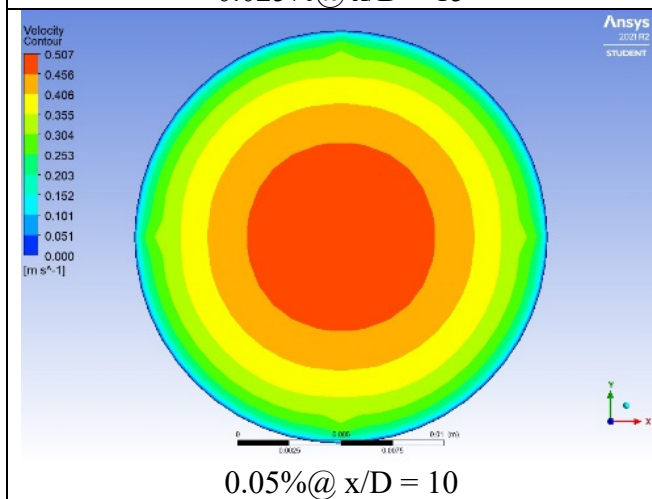
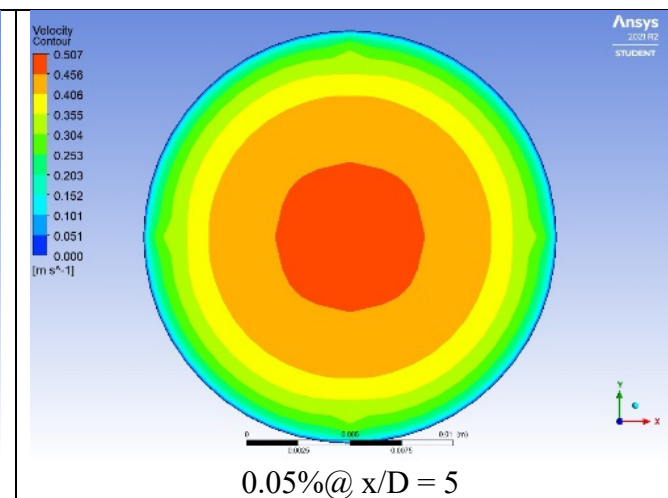
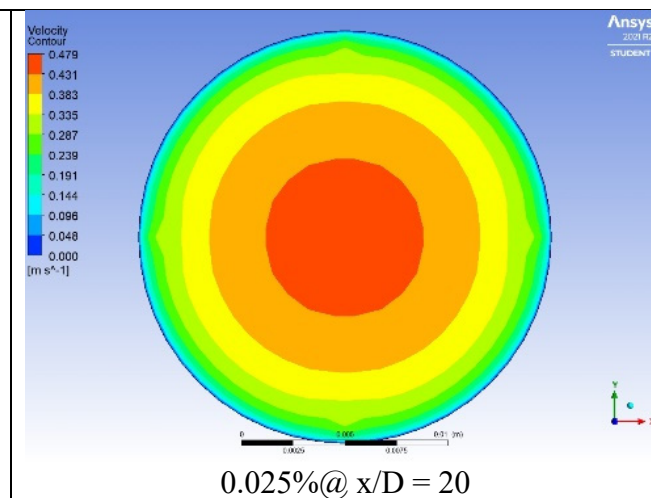
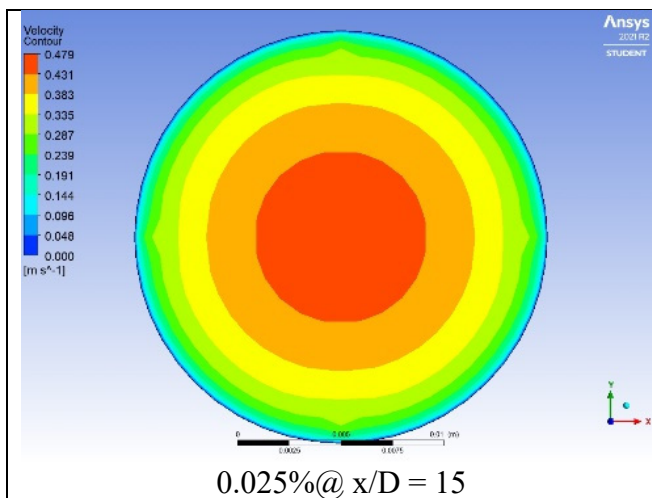
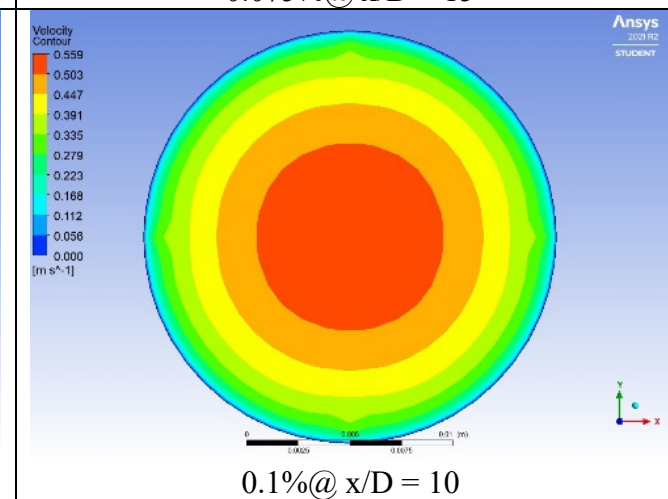
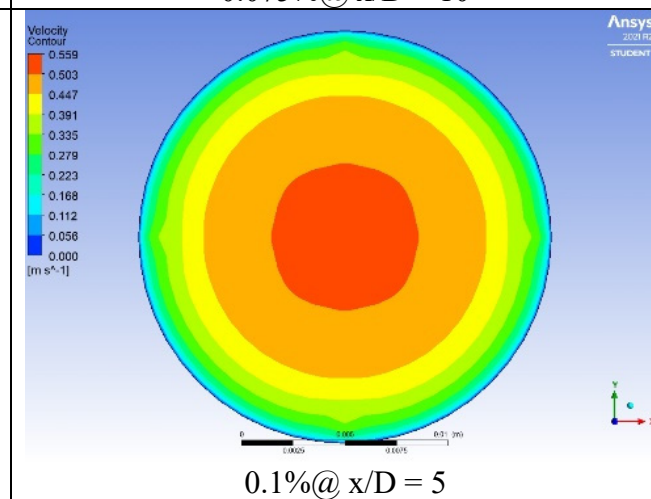
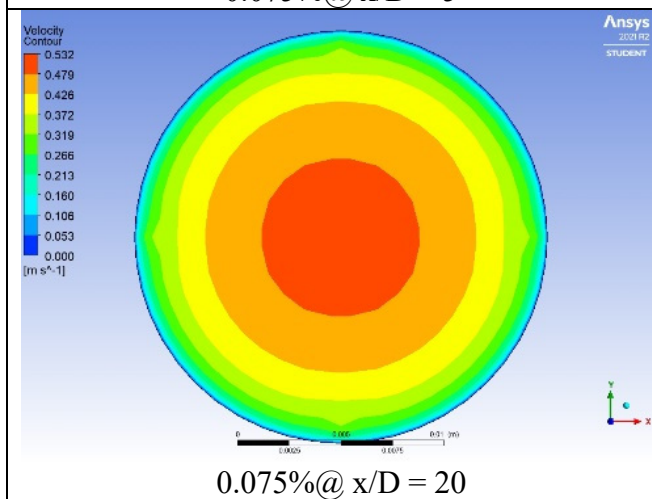
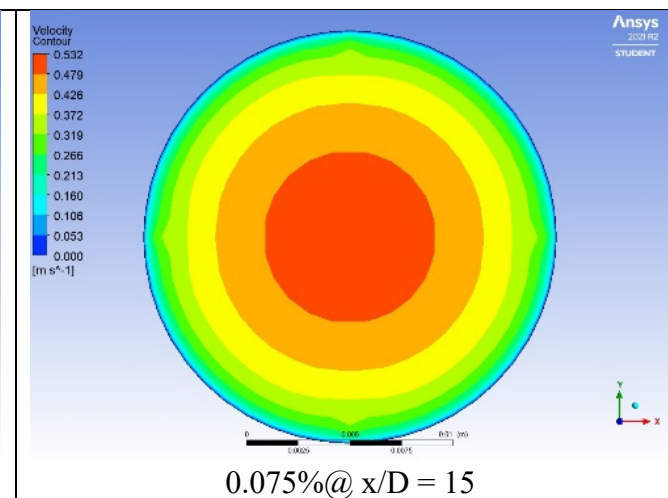
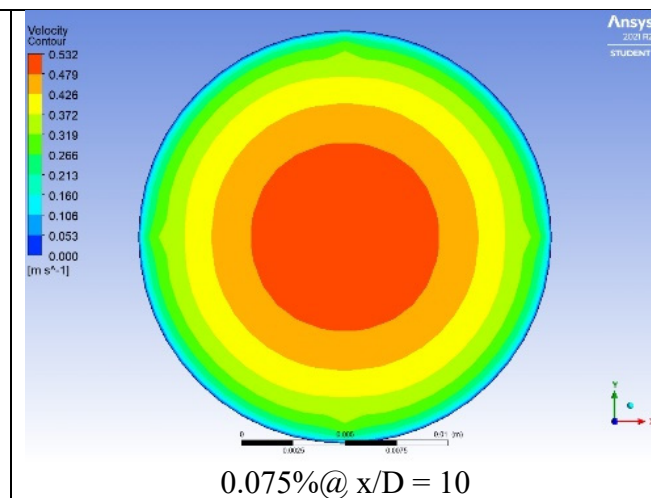
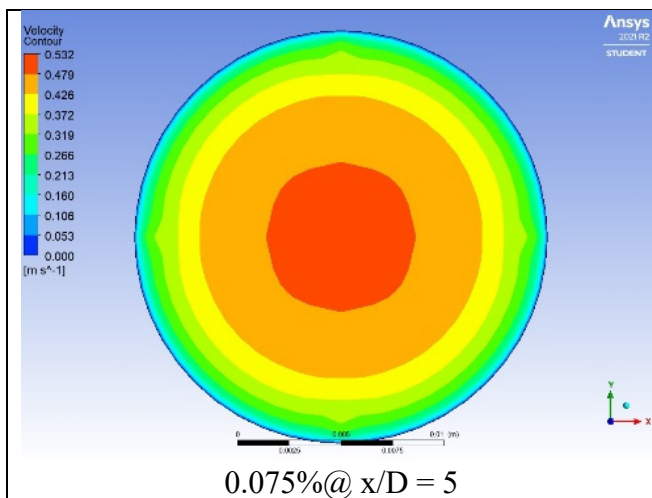


Figure S1: Temperature contours of DW and different mass fractions of CF-GNPs at $Re = 7,500$ and different cross-sections.







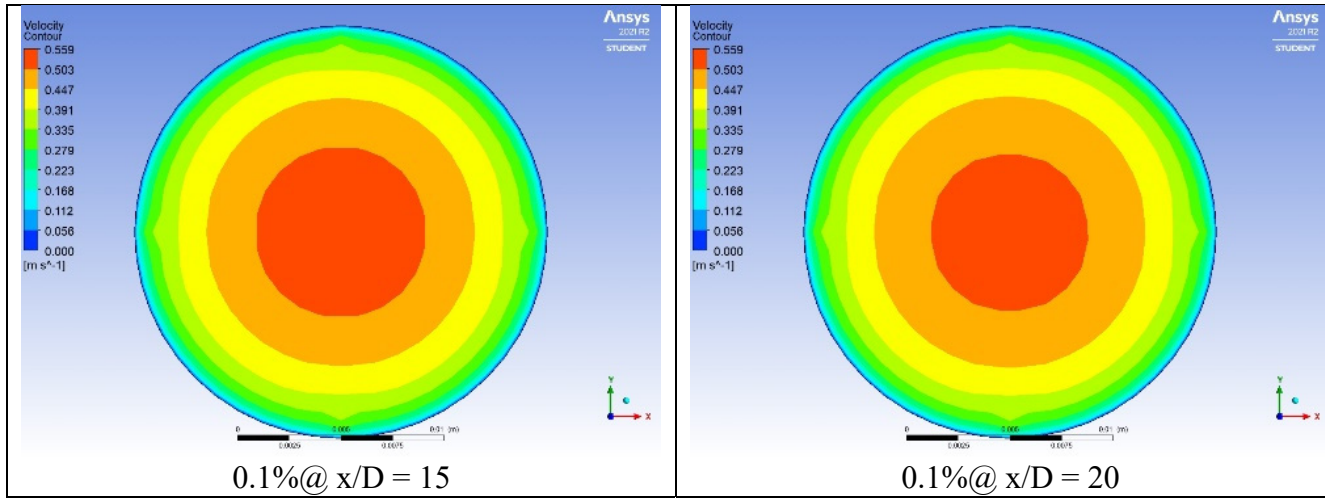


Figure S2: Velocity contours of DW and different mass fractions of CF-GNPs at $Re = 7,500$ and different cross-sections.