

Supplementary Materials

Electronic Nose and GC-MS Analysis to Detect Mango Twig Tip Dieback in Mango (*Mangifera indica*) and Panama Disease (TR4) in Banana (*Musa acuminata*)

Wathsala Ratnayake ¹, Stanley E. Bellgard ¹, Hao Wang ² and Vinuthaa Murthy ^{2,*}

¹ Biosecurity and Animal Welfare Branch, Agriculture, Fisheries and Biosecurity Division, Department of Industry, Tourism and Trade (DITT), Northern Territory Government, Darwin 3000, Australia; wathsala.ratnayake@nt.gov.au (W.R.); stanley.bellgard@nt.gov.au (S.E.B.)

² Energy Resources Institute, Faculty of Science and Technology, Charles Darwin University, Darwin 0810, Australia; hao.wang@cdu.edu.au

* Correspondence: vinuthaa.murthy@cdu.edu.au; Tel.: +61-8-89466794

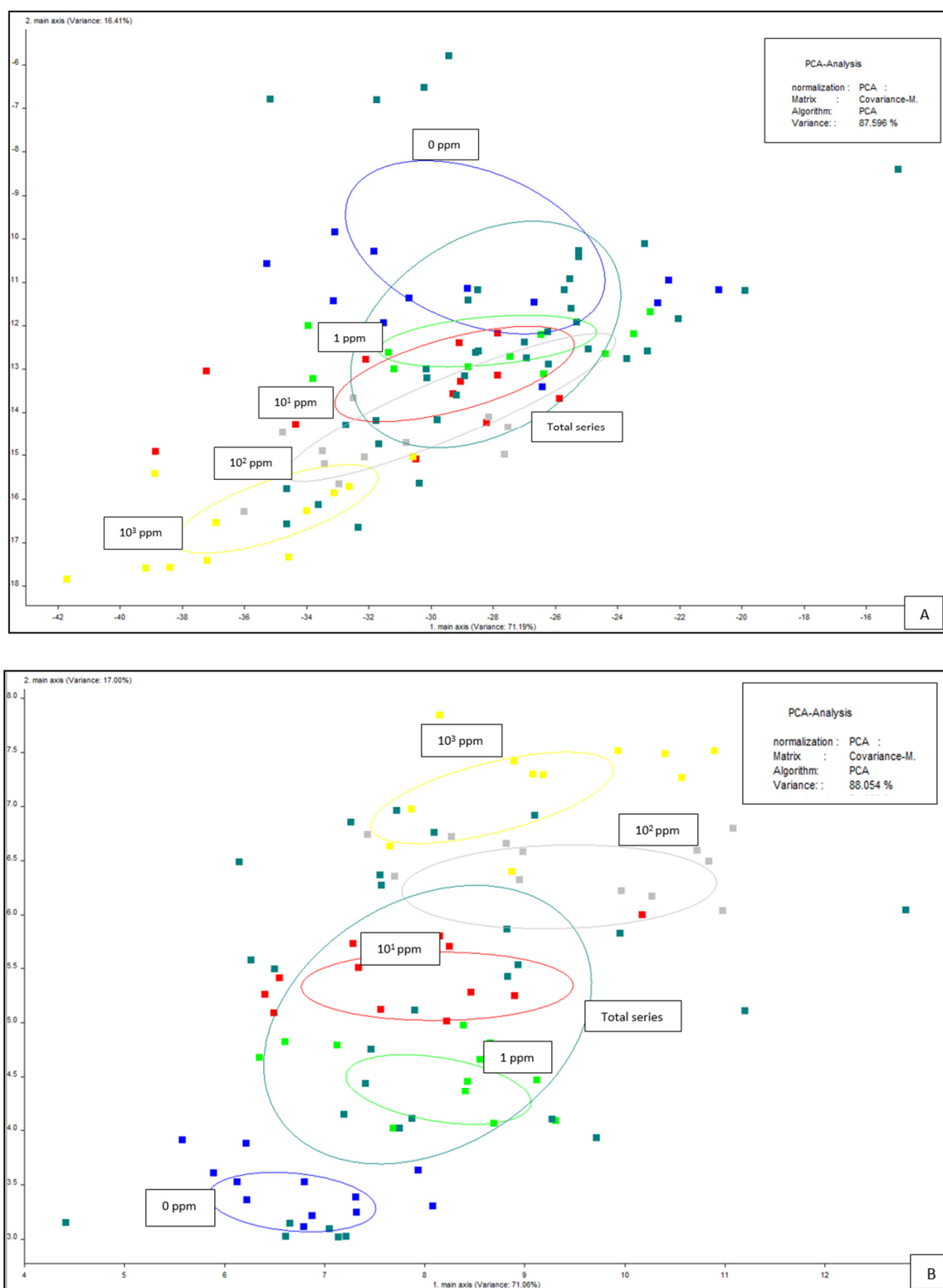


Figure S1. PCA plot for individual classes of concentration and total concentration series data obtained from PEN 3 device. (A) 3-Methyl-2-butanol, (B) Isoamyl isovalerate.

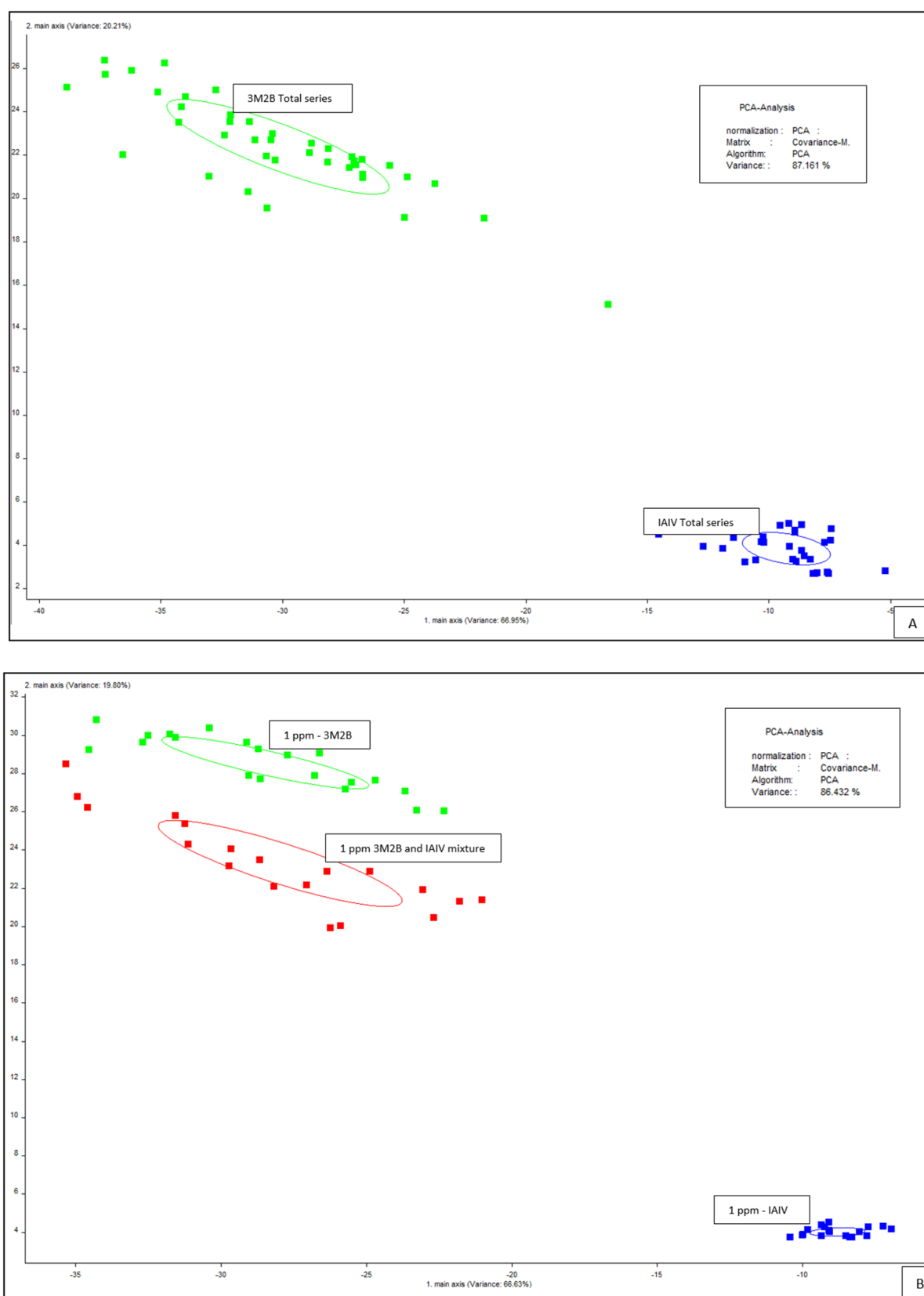


Figure S2. PCA Plots of data obtained from the PEN 3 device. (A) 3M2B total series vs IAIV total series, (B) Mixture of 1 ppm 3M2B and IAIV against pure 3M2B and IAIV of 1 ppm.

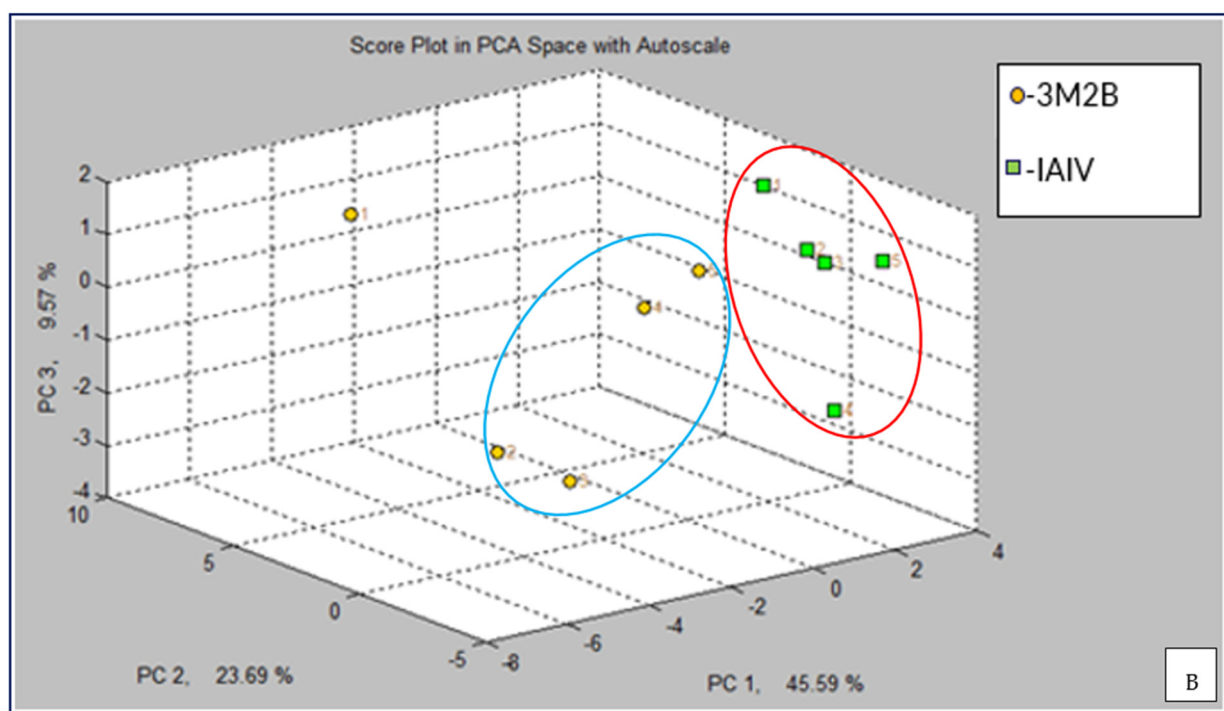
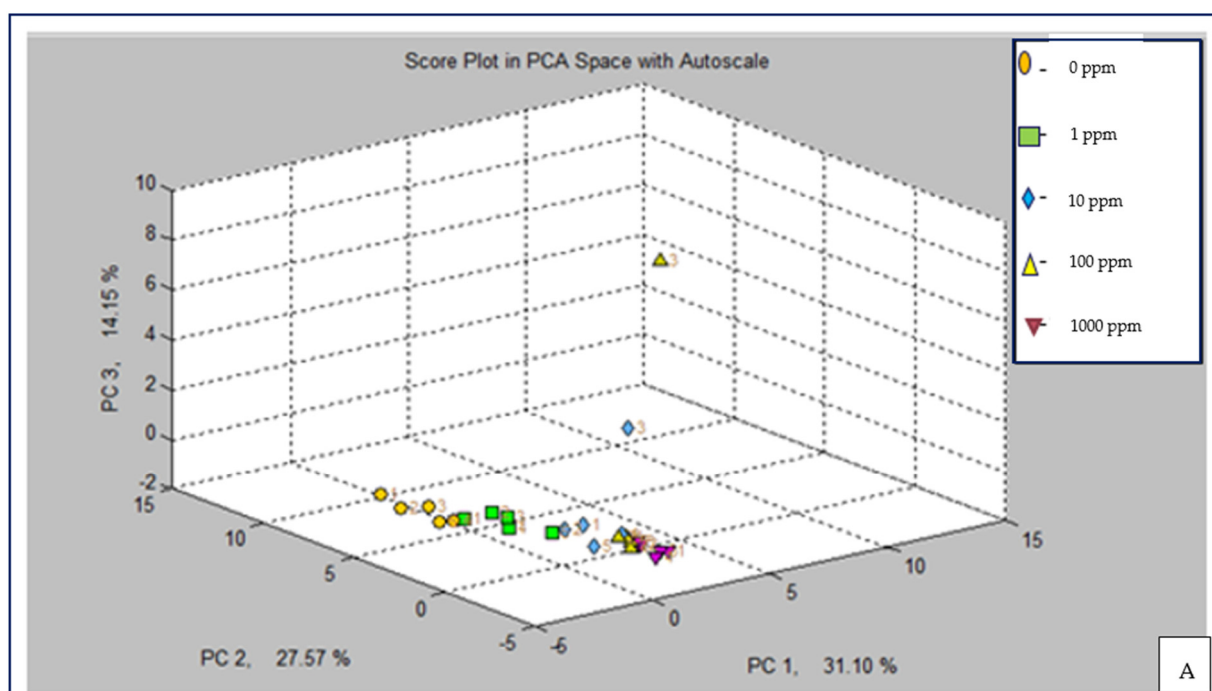


Figure S3. CD analysis score plots in PCA of data obtained from MSEM 160 device. **(A)** 3M2B total concentration series, **(B)** Mixture of 1ppm 3M2B and IAIV.