

Supplementary Material

Detecting fingerprints of waterborne bacteria on a sensor

Yeşeren Saylan¹, Özgecan Erdem², Nilüfer Cihangir² and Adil Denizli^{1,*}

¹Hacettepe University, Department of Chemistry, 06800 Ankara, Turkey; yeseren@hacettepe.edu.tr

²Hacettepe University, Department of Biology, 06800 Ankara, Turkey; ozgecanerdem@hacettepe.edu.tr

*Correspondence: denizli@hacettepe.edu.tr

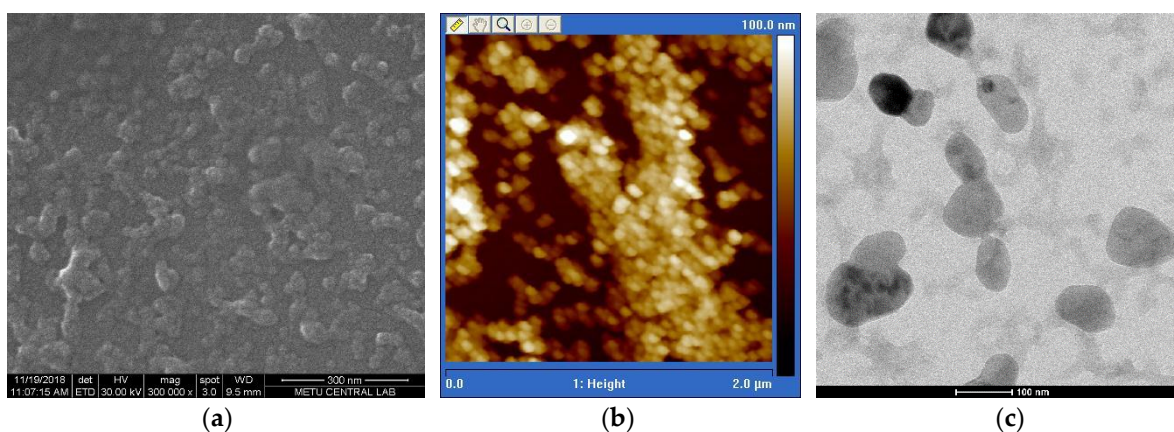


Figure S1. Nanoparticle characterization results: (a) SEM; (b) AFM and (c) TEM.