

# Novel Nematode-killing Protein-1 (Nkp-1) from a Marine Epiphytic Bacterium *Pseudoalteromonas tunicata*

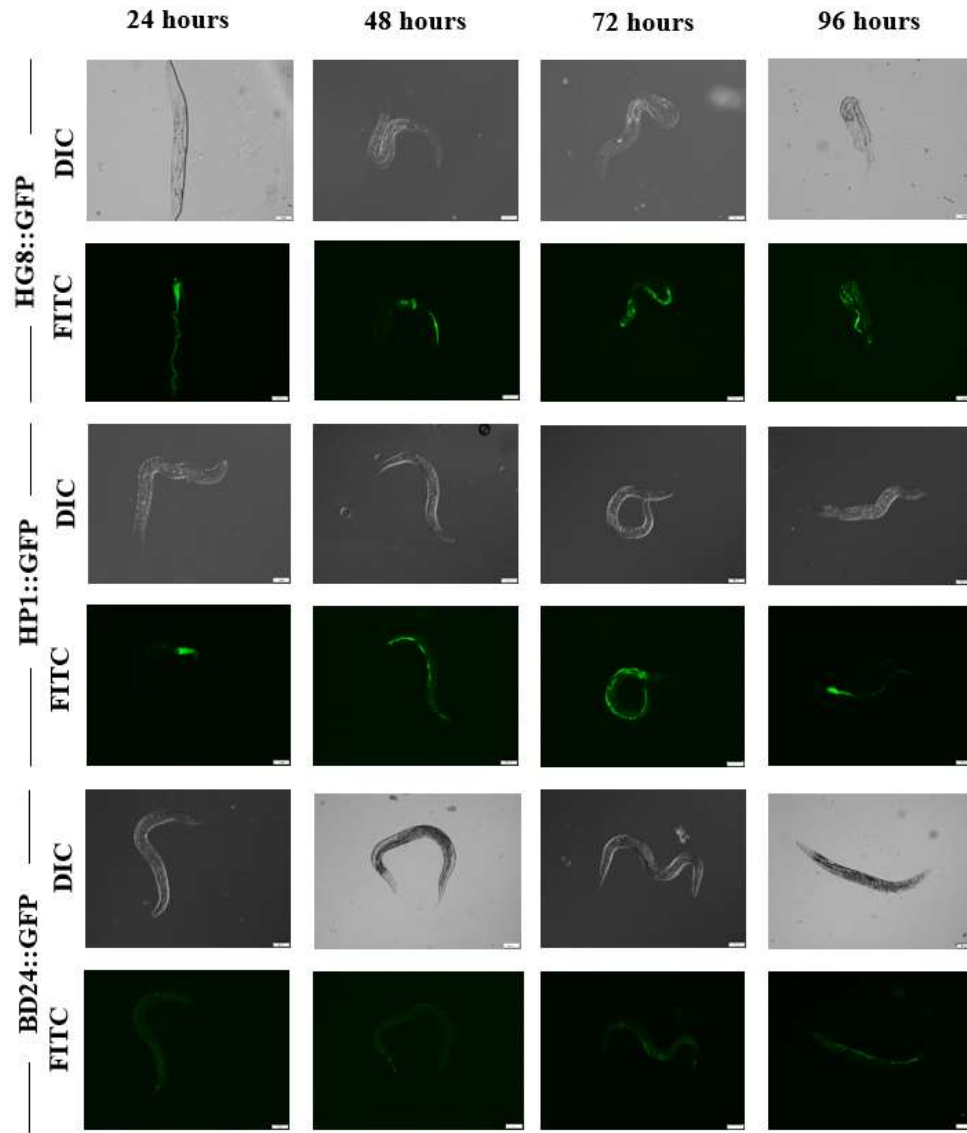
Nor Hawani Salikin <sup>1,2,\*</sup>, Malak Dubois <sup>3</sup>, Jadranka Nappi <sup>1</sup>, Helene Lebhar <sup>3</sup>, Christopher Marquis <sup>3</sup> and Suhelen Egan <sup>1,\*</sup>

<sup>1</sup> Centre for Marine Science and Innovation, School of Biological, Earth and Environmental Sciences, UNSW, Sydney, NSW 2052, Australia; j.nappi@unsw.edu.au

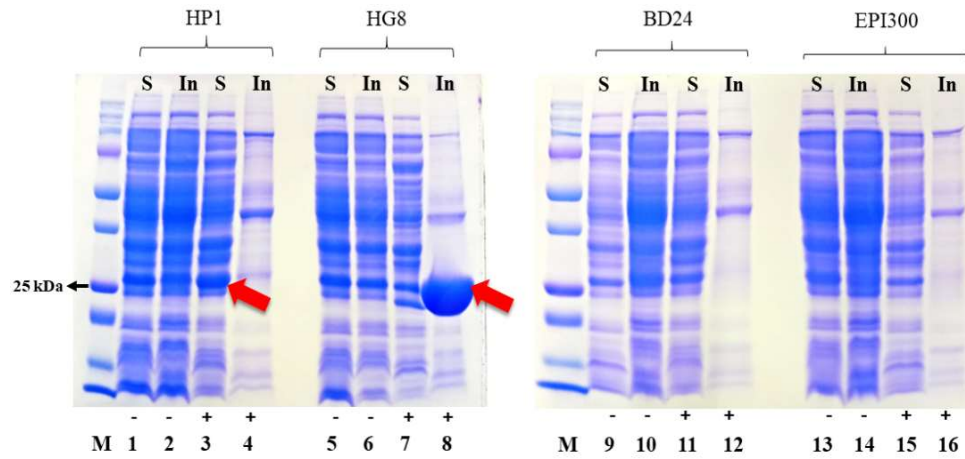
<sup>2</sup> School of Industrial Technology, Universiti Sains Malaysia, USM, Gelugor 11800, Penang, Malaysia

<sup>3</sup> School of Biotechnology and Biomolecular Sciences, UNSW, Sydney, NSW 2052, Australia;  
malak.dubois@det.nsw.edu.au (M.D.); h.lebhar@unsw.edu.au (H.L.);  
c.marquis@unsw.edu.au (C.M.)

\* Correspondence: norhawani@usm.my (N.H.S.); s.egan@unsw.edu.au (S.E.)



**Figure S1.** HP1::GFP and HG8::GFP bacterial colonisation within *C. elegans* gastrointestinal system. The BD24::GFP strain was used as the negative control. Nematode images were acquired under the 10x magnification (for HP1::GFP and BD24::GFP bacterial colonisation) and 20x magnification (for HG8::GFP bacterial colonisation) using the Olympus BLX-61 equipped with the DIC and FITC filter. Scale bars indicates 100  $\mu\text{m}$  (for images of HP1::GFP and BD24::GFP-treated nematodes) and 50  $\mu\text{m}$  (for images of HG8::GFP-treated nematodes). Bacterial colonisation is indicated by green fluorescence emitted by the GFP-tagged bacterial cells.



**Figure S2.** SDS Polyacrylamide gel (12%) showing soluble and insoluble protein fractions of HP1, HG8 and the control strains; BD24 and EPI300. Key: S; soluble protein fraction, In; Insoluble protein fraction, -; no L-(+)-Arabinose induction, +; induced with L-(+)-Arabinose (0.2% w/v). Protein bands ~ 25.17 kDa (indicated by red arrows) were confirmed as the Nematode killing protein-1 (Nkp-1) encoded by *P. tunicata* D2 *hp1* (NCBI Accession: ZP\_01132246.1). The Nkp-1 was not detected in the protein fractions of BD24 or EPI300 bacterial strains.