

Article

Molecular Identification and VOMs Characterization of *Saccharomyces cerevisiae* Strains Isolated from Madeira Region Winery Environments

Mariangie Castillo ¹, Emanuel da Silva ², José S. Câmara ^{1,3,*} and Mahnaz Khadem ^{2,4}

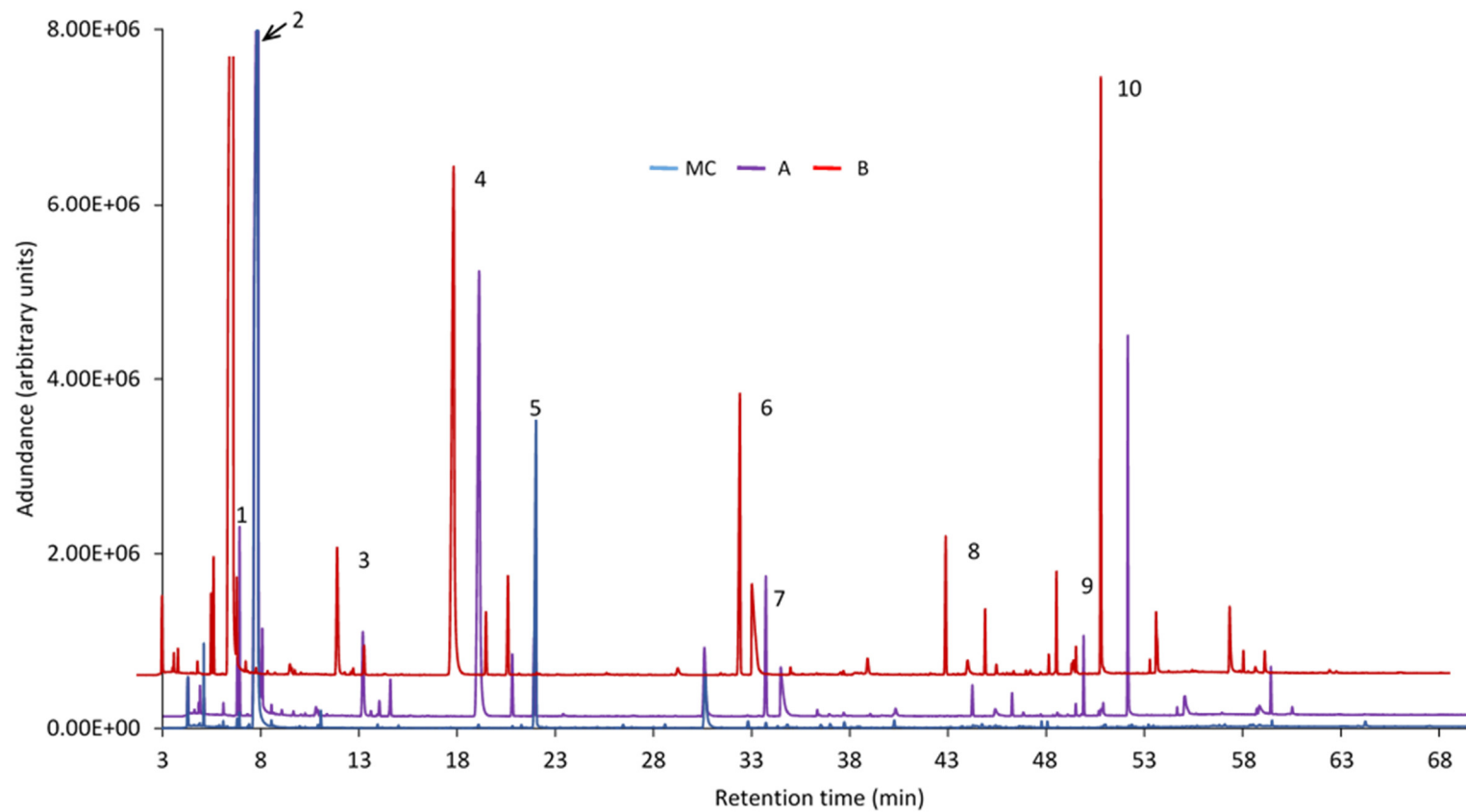


Figure 1. GC-MS overlay chromatograms from: MC-concentrate must (diluted), A strain and B strain. Major peaks: 1- Ethyl acetate; 2- Ethanol; 3- 2-Methyl-1-propanol; 4- 2-Methyl-1-pentanol; 5- 3-Octanone; 6- Ethyl octanoate; 7- Acetic acid; 8- Ethyl decanoate; 9- 2-Phenylethyl acetate; 10- Phenylethyl alcohol.