

Supplementary Material

Contribution of EBSD for the Microstructural Study of Archaeological Iron Alloy Artefacts from the Archaeological Site of Loiola (Biscay, Northern Spain)

Céline Rémaizeilles ^{1,*}, Maria Cruz Zuluaga ², Haizea Portillo-Blanco ², Egle Conforto ¹, Abdelali Oudriss ¹, Luis Àngel Ortega ², Ainhoa Alonso-Olazabal ² and Juan José Cepeda-Ocampo ³

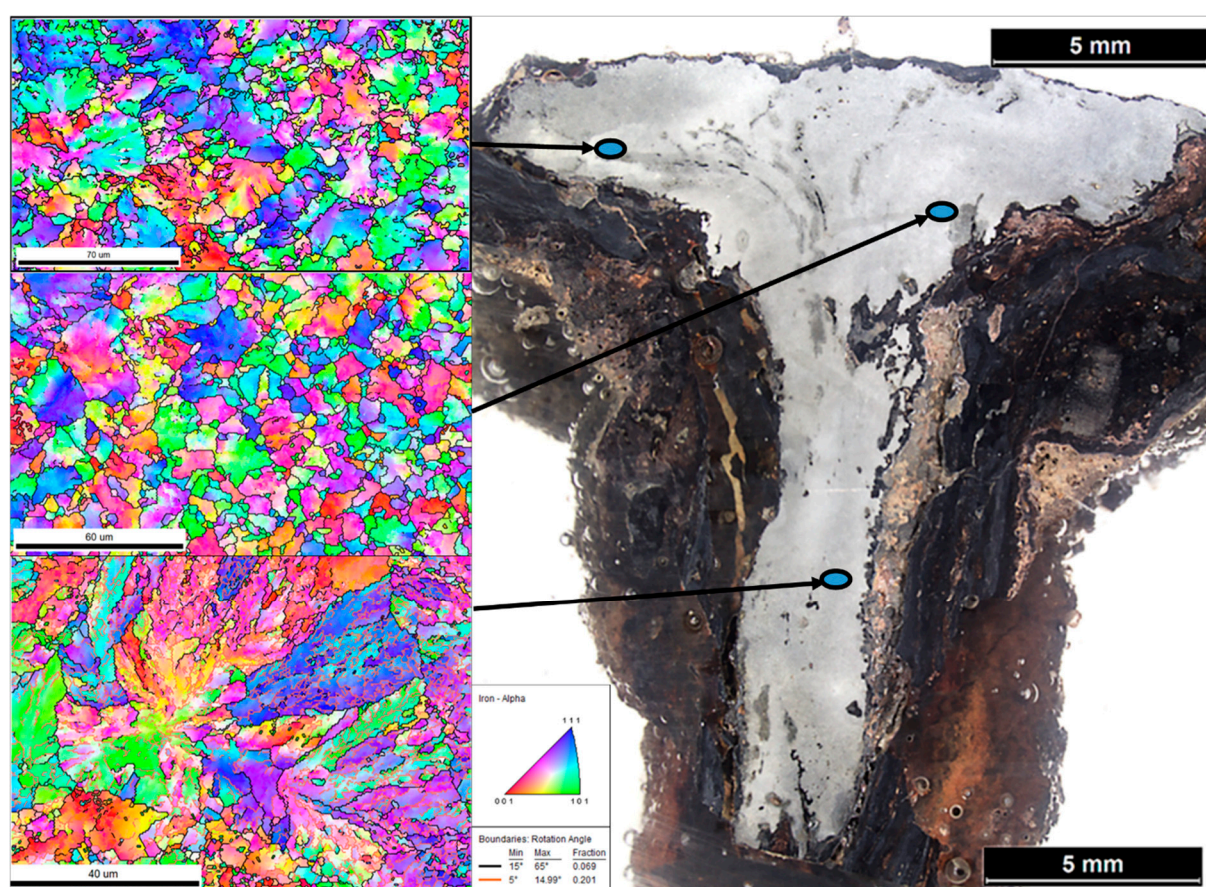


Figure S1. EBSD crystallographic orientation maps considering iron α (inverse pole figure) performed in different areas of sample Ol-260.

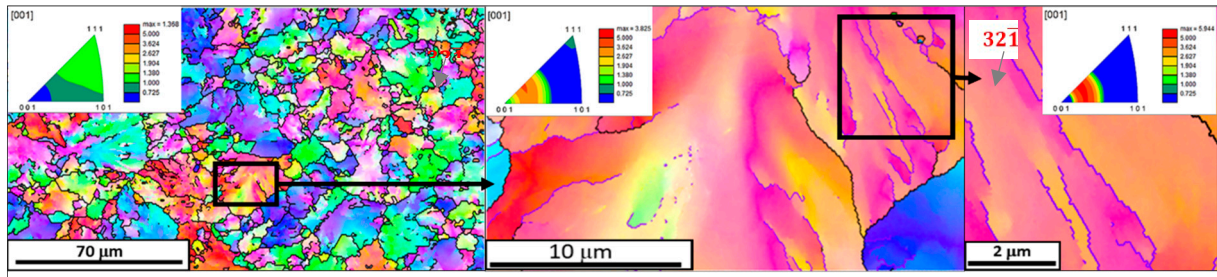


Figure S2. Orientations diagrams associated to the EBSD maps acquired at different magnification, showing local orientation gradients of pearlitic ferrite in sample OI-260. The red band on the diagrams, going from [024] towards [113] zone axes, indicates a predominance along the $(3\bar{2}1)$ direction.

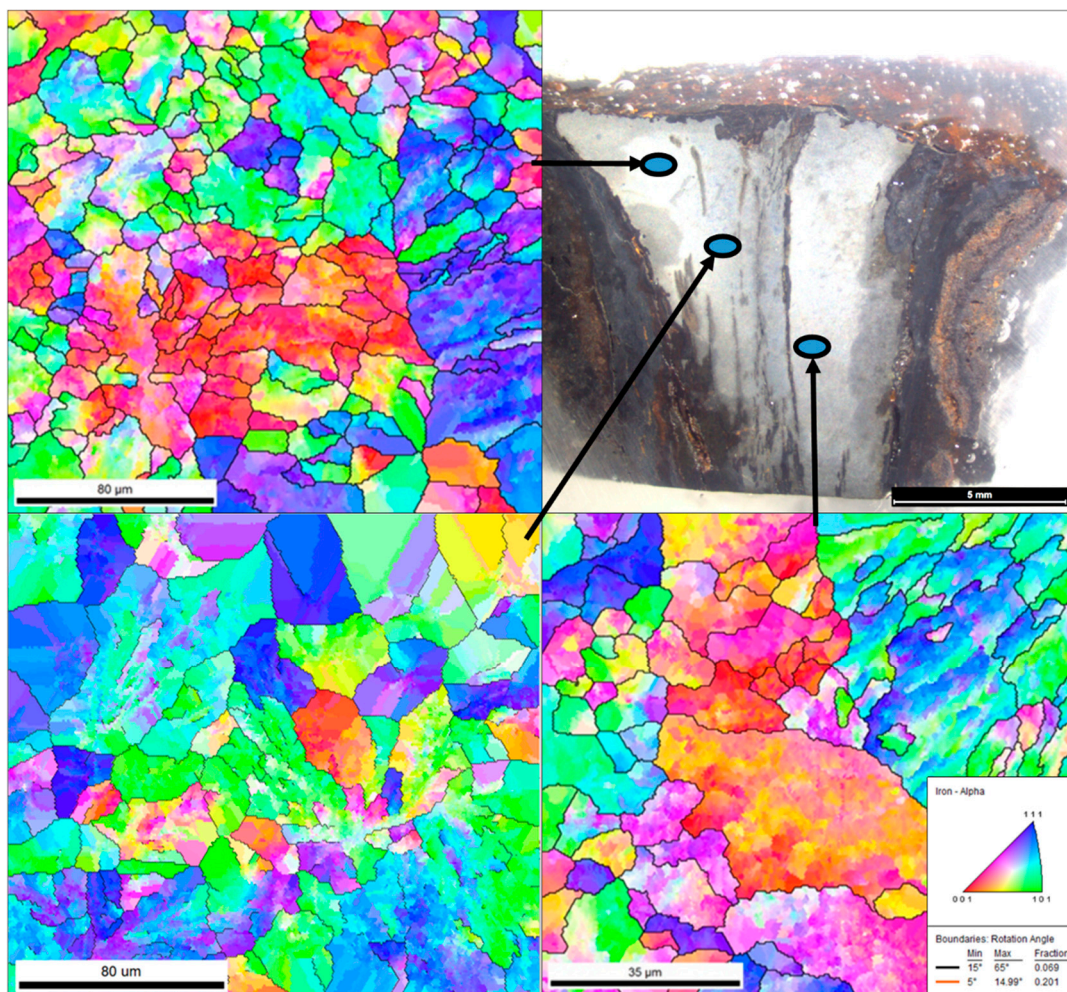


Figure S3. EBSD crystallographic orientation maps considering iron α (inverse pole figure) performed in different areas of sample OI-262.