

Continuous zonal gradients characterize epipelagic plankton assemblages and hydrography in the subtropical North Atlantic

Antonio Bode*, M. Ángeles Louro, Elena Rey, Ángel F. Lamas

* Correspondence: antonio.bode@ieo.csic.es

Supplementary Figure S1. Dendrogram of log-transformed mesozooplankton abundance data.

Supplementary Table S1. Correlation between environmental variables.

Supplementary Table S2. Parameters of the 2nd order polynomial relating sea surface temperature, sea surface salinity, mixed layer depth, or the depth of the chlorophyll maximum with geographical longitude.

Supplementary Table S3. Values of the slope and intercept of the biomass-normalized plankton spectra for each station.

Supplementary Table S4. Values of the linear regression parameters between plankton variables and geographical longitude.

Supplementary Table S5. Abundance (indiv. m⁻³) of mesozooplankton taxa.

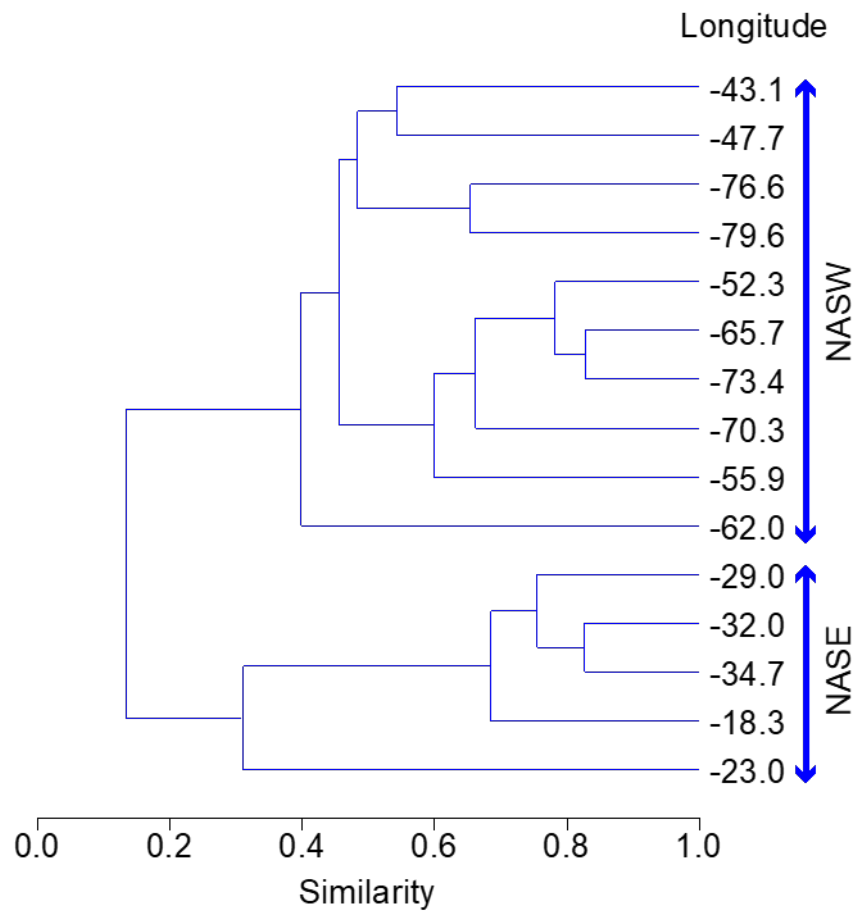


Figure S1. Dendrogram of log-transformed mesozooplankton abundance data showing the similarity among stations (identified by geographical longitude values, degrees) of the NASE and NASW provinces.

Table S1. Correlation between the environmental variables selected for this study. SST: sea surface temperature; SSS: sea surface salinity; SFluor: surface chlorophyll fluorescence; DCM: depth of the chlorophyll maximum; MLD: mixing layer depth. MLO₂, MLNO₃, MLSiO₂, MLPO₄, and MLFluor: mixed layer dissolved oxygen, nitrate, silicate, phosphate, and fluorescence, respectively. Significance (P) is indicated in the upper semimatrix and Pearson r coefficients in the lower semimatrix. Significant vales (P<0.05) are indicated in boldface.

	SST	SSS	SFluor	DCM	MLD	MLFluor	MLO ₂	MLNO ₃	MLSiO ₂	MLPO ₄
SST	---	0.012	0.000	0.297	0.165	0.000	0.000	0.328	0.217	0.028
SSS	-0.386	---	0.353	0.003	0.000	0.194	0.329	0.984	0.862	0.001
SFluor	-0.527	0.147	---	0.020	0.583	0.000	0.009	0.666	0.097	0.084
DCM	0.165	0.448	-0.357	---	0.000	0.009	0.055	0.666	0.695	0.494
MLD	-0.218	0.561	0.087	0.528	---	0.415	0.538	0.196	0.201	0.004
MLFluor	-0.558	0.204	0.907	-0.397	0.129	---	0.017	0.763	0.250	0.100
MLO ₂	-0.617	0.156	0.403	-0.301	-0.099	0.372	---	0.138	0.831	0.463
MLNO ₃	-0.176	0.004	0.078	0.078	0.231	0.055	-0.268	---	0.803	0.641
MLSiO ₂	-0.221	0.032	0.294	0.071	0.229	0.206	-0.039	0.045	---	0.134
MLPO ₄	-0.382	0.571	0.305	0.123	0.486	0.291	0.135	-0.084	0.267	---

Table S2. Parameters of the 2nd order polynomial relating sea surface temperature (SST, °C), sea surface salinity (SSS), mixed layer depth (MLD, m), or the depth of the chlorophyll maximum (DCM, m) with geographical longitude (independent variable, degrees). Equations are in the form: $Y = a_0 + a_1 X + a_2 X^2$. r^2 : determination coefficient; P: significance. 95% confidence limits (CL) for each coefficient are indicated between parenthesis.

Dependent variable	a_0 (95% CL)		a_1 (95% CL)		a_2 (95% CL)		r^2	P
SST	18.889	(17.783, 19.997)	-0.152	(-0.209, -0.090)	-0.001	(-0.001, -0.000)	0.625	0.000
SSS	36.544	(35.973, 36.880)	-0.042	(-0.068, -0.024)	-0.001	(-0.001, -0.000)	0.652	0.000
MLD	55.091	(5.358, 108.254)	-2.033	(-4.239, 0.374)	-0.030	(-0.052, -0.006)	0.414	0.000
DCM	22.676	(-7.923, 48.622)	-4.784	(-6.200, -3.489)	-0.051	(-0.066, -0.038)	0.516	0.000

Table S3. Values (\pm se) of the slope (NBSS, \log_2 [individuals m^{-3}]) and intercept (NBSI, \log_2 [individuals $\text{mg C}^{-1} \text{m}^{-3}$]) of the biomass-normalized abundance plankton spectra for each station. r: correlation coefficient; P: significance.

Station	Date	Longitude	Latitude	NBSS	NBSI	r	P
12	29/01/2011	-15.3478	27.1285	-1.353 ± 0.098	5.654 ± 0.398	-0.990	0.000
16	30/01/2011	-16.7797	26.6630	-1.556 ± 0.089	7.767 ± 0.361	-0.993	0.000
20	31/01/2011	-18.2703	26.1837	-1.618 ± 0.078	6.365 ± 0.318	-0.995	0.000
24	01/02/2011	-20.0092	25.6257	-1.542 ± 0.117	5.604 ± 0.477	-0.987	0.000
27	02/02/2011	-21.4565	25.1563	-1.613 ± 0.107	6.117 ± 0.437	-0.990	0.000
30	03/02/2011	-22.9763	24.6612	-1.655 ± 0.113	6.486 ± 0.460	-0.989	0.000
33	04/02/2011	-24.7080	24.5012	-1.153 ± 0.145	4.675 ± 0.589	-0.974	0.000
37	05/02/2011	-27.1497	24.5012	-1.633 ± 0.065	6.566 ± 0.264	-0.996	0.000
39	06/02/2011	-28.3718	24.5010	-1.805 ± 0.084	6.662 ± 0.340	-0.995	0.000
40	07/02/2011	-28.9843	24.4990	-1.779 ± 0.097	5.541 ± 0.394	-0.993	0.000
43	08/02/2011	-30.8183	24.4992	-1.670 ± 0.116	6.295 ± 0.470	-0.989	0.000
45	09/02/2011	-32.0403	24.5010	-1.798 ± 0.067	6.342 ± 0.272	-0.997	0.000
48	10/02/2011	-33.8727	24.5008	-1.811 ± 0.090	5.866 ± 0.367	-0.994	0.000
52	11/02/2011	-34.7195	24.4998	-1.811 ± 0.116	6.079 ± 0.417	-0.991	0.000
55	12/02/2011	-37.1078	24.5017	-1.676 ± 0.090	6.411 ± 0.365	-0.993	0.000
59	13/02/2011	-38.9537	24.4998	-1.571 ± 0.141	5.507 ± 0.504	-0.984	0.000
61	14/02/2011	-39.8760	24.5022	-1.515 ± 0.161	5.684 ± 0.652	-0.976	0.000
64	15/02/2011	-41.2633	24.4998	-1.614 ± 0.113	6.295 ± 0.405	-0.990	0.000
68	16/02/2011	-43.1097	24.5002	-1.562 ± 0.079	6.132 ± 0.284	-0.995	0.000
71	17/02/2011	-44.4953	24.4998	-1.651 ± 0.085	6.307 ± 0.303	-0.994	0.000
78	19/02/2011	-47.7278	24.5007	-1.760 ± 0.082	6.725 ± 0.334	-0.995	0.000
82	20/02/2011	-49.5755	24.5000	-1.556 ± 0.093	6.215 ± 0.378	-0.992	0.000
85	21/02/2011	-50.9612	24.5002	-1.427 ± 0.100	5.484 ± 0.357	-0.991	0.000
88	22/02/2011	-52.3467	24.5000	-1.760 ± 0.122	6.162 ± 0.381	-0.990	0.000
91	23/02/2011	-54.0342	24.4865	-2.041 ± 0.149	6.060 ± 0.535	-0.987	0.000
94	24/02/2011	-55.8743	24.5005	-1.653 ± 0.066	6.157 ± 0.268	-0.996	0.000
97	25/02/2011	-57.7157	24.5008	-1.841 ± 0.097	6.090 ± 0.394	-0.993	0.000
100	26/02/2011	-59.5530	24.5000	-1.697 ± 0.090	6.564 ± 0.365	-0.993	0.000
104	27/02/2011	-62.0047	24.5012	-1.546 ± 0.095	6.873 ± 0.384	-0.992	0.000
107	28/02/2011	-63.8430	24.5015	-1.850 ± 0.094	6.786 ± 0.383	-0.993	0.000
110	01/03/2011	-65.6820	24.5007	-1.746 ± 0.093	6.259 ± 0.332	-0.994	0.000
113	02/03/2011	-67.5202	24.4997	-1.770 ± 0.107	6.338 ± 0.383	-0.992	0.000
116	03/03/2011	-69.1327	24.5007	-1.666 ± 0.089	5.668 ± 0.362	-0.993	0.000
120	05/03/2011	-70.3220	26.2038	-1.629 ± 0.080	6.370 ± 0.326	-0.994	0.000
125	06/03/2011	-72.2647	26.2032	-1.778 ± 0.092	6.748 ± 0.374	-0.993	0.000
128	07/03/2011	-73.4317	26.2035	-1.668 ± 0.072	6.537 ± 0.293	-0.996	0.000
133	08/03/2011	-75.1557	26.2038	-1.695 ± 0.072	7.086 ± 0.291	-0.996	0.000
137	09/03/2011	-75.8622	26.2042	-1.803 ± 0.090	6.732 ± 0.366	-0.994	0.000
143	10/03/2011	-76.6218	26.2037	-1.740 ± 0.099	7.401 ± 0.402	-0.992	0.000
149	11/03/2011	-76.9525	26.2030	-1.691 ± 0.068	7.591 ± 0.276	-0.996	0.000
157	13/03/2011	-79.3063	27.0003	-1.753 ± 0.112	7.706 ± 0.400	-0.991	0.000
161	13/03/2011	-79.5658	27.0012	-1.785 ± 0.111	7.010 ± 0.398	-0.991	0.000

Table S4. Values of the linear regression parameters between plankton variables and geographical longitude (independent variable, degrees). NBSS (\log_2 [number m^{-3}]) and NBIS (\log_2 [number $\text{mg C}^{-1} \text{m}^{-3}$]): slope and intercept, respectively, of the biomass-normalized plankton spectra; Phytoplankton and Microzooplankton (number L^{-1}) and *Trichodesmium* (trichomes L^{-1}) abundance determined by user-validated FlowCAM images. Mesozooplankton abundance (individuals m^{-3}) determined by microscopy. r: correlation coefficient; P: significance.

Dependent variable	a \pm se	b \pm se	r	P
NBSS	-2.532 \pm 0.056	0.003 \pm 0.001	0.393	0.010
NBIS	5.675 \pm 0.229	-0.014 \pm 0.004	-0.453	0.003
Phytoplankton	11.874 \pm 20.030	-1.971 \pm 0.384	-0.626	0.000
Microzooplankton	49.515 \pm 23.519	-2.265 \pm 0.451	-0.617	0.000
<i>Trichodesmium</i>	258.160 \pm 28.149	3.099 \pm 0.496	0.736	0.000
Mesozooplankton (all groups)	---	---	0.059	0.705
Copepoda (Mesozooplankton)	---	---	-0.270	0.330
Tunicata (Mesozooplankton)	---	---	-0.347	0.205
Cnidaria (Mesozooplankton)	---	---	0.141	0.617
Other mesozooplankton	---	---	-0.214	0.444

<i>Calanus helgolandicus</i> (adults)	Copepoda	0.00	0.00	0.18	0.25	0.00	0.00	0.00	0.00	0.00	0.00	0.00	0.00	0.00	0.00	0.00
<i>Calanus helgolandicus</i> (juveniles)	Copepoda	1.53	3.18	0.18	0.00	0.40	0.80	1.30	0.30	0.00	0.00	0.00	0.00	0.00	1.27	0.00
<i>Calocalanus contractus</i>	Copepoda	0.00	4.78	0.00	0.00	0.00	8.80	0.00	0.00	0.00	0.00	0.00	0.00	0.00	0.00	0.00
<i>Calocalanus pavo</i>	Copepoda	0.00	0.00	0.00	0.00	0.00	0.00	1.30	0.30	2.30	7.60	0.51	0.00	0.00	0.00	5.94
<i>Calocalanus</i> spp.	Copepoda	0.30	0.00	0.00	0.00	0.10	1.60	1.80	0.00	0.00	13.60	4.33	1.06	0.76	8.49	10.19
<i>Calocalanus styliremis</i>	Copepoda	5.10	0.80	0.55	0.13	0.90	0.00	1.50	0.10	1.30	0.00	0.00	0.00	0.00	1.27	0.00
<i>Candacia bipinnata</i>	Copepoda	0.00	0.00	0.00	0.00	0.40	0.00	0.00	0.00	0.20	0.00	0.00	0.00	0.00	0.00	0.00
<i>Candacia bispinosa</i>	Copepoda	0.00	3.98	0.00	0.00	0.00	0.00	0.00	0.00	0.20	0.00	0.25	0.00	0.00	0.00	2.55
<i>Candacia ketchumi</i>	Copepoda	0.00	0.00	0.00	0.00	0.00	0.00	0.00	0.00	0.00	0.00	0.00	0.21	0.00	0.00	0.00
<i>Candacia pachydactyla</i>	Copepoda	0.00	1.59	0.00	0.00	0.00	0.00	0.00	0.00	0.00	0.00	0.00	0.00	0.00	0.00	0.00
<i>Candacia simplex</i>	Copepoda	0.00	0.00	0.00	0.00	0.00	0.00	0.00	0.00	0.00	0.00	0.00	0.00	0.00	0.00	1.70
<i>Candacia</i> spp. (juveniles)	Copepoda	0.00	1.59	0.36	0.00	0.00	0.00	0.80	0.50	0.40	0.00	0.25	0.42	0.00	0.42	1.70
<i>Candacia varicans</i>	Copepoda	0.00	0.00	0.00	0.00	0.00	0.80	0.00	0.00	0.00	0.00	0.00	0.00	0.00	0.00	0.00
<i>Centropages gracilis</i>	Copepoda	0.00	0.00	0.00	0.00	0.00	0.00	0.00	0.00	0.00	0.00	0.00	0.00	0.00	0.00	0.80
<i>Centropages violaceus</i>	Copepoda	0.00	1.59	0.00	0.00	0.00	0.00	0.00	0.00	0.00	0.00	0.00	0.00	0.00	0.00	0.00
<i>Clausocalanus</i> spp.	Copepoda	2.29	43.00	4.37	0.25	4.10	17.50	13.00	1.90	3.40	84.90	6.88	13.38	2.55	22.08	117.20
<i>Clytemnestra rostrata</i>	Copepoda	0.00	0.00	0.00	0.00	0.10	0.00	0.30	0.00	0.00	0.00	0.25	0.00	0.00	0.85	0.00
Copepoda (juveniles)	Copepoda	17.83	61.31	8.74	5.50	9.40	30.30	17.30	4.80	13.20	102.80	8.90	12.95	7.39	59.02	165.60
Copepoda (nauplius)	Copepoda	0.00	0.00	0.18	0.00	0.10	0.80	0.00	0.00	0.00	0.80	0.00	0.42	0.00	1.27	1.70
<i>Copilia quadrata</i>	Copepoda	0.00	0.00	0.00	0.00	0.00	0.00	1.00	0.00	0.00	0.00	0.25	0.00	0.00	0.00	0.00
<i>Copilia mirabilis</i>	Copepoda	0.76	0.00	0.00	0.00	0.00	0.00	0.00	0.00	0.00	1.70	0.00	0.00	0.00	0.00	0.00
<i>Corycaeus</i> spp.	Copepoda	1.53	7.96	3.09	0.00	1.90	6.40	9.20	1.90	4.90	30.60	3.82	3.61	2.04	18.26	49.30
<i>Ctenocalanus vanus</i>	Copepoda	0.25	3.98	0.00	0.00	0.00	0.00	0.00	0.00	0.00	0.00	0.00	0.21	0.00	0.42	11.04
<i>Ditrichocorycaeus anglicus</i>	Copepoda	0.25	0.00	1.46	0.00	0.50	0.00	0.00	0.00	0.20	0.00	0.00	0.00	0.00	0.00	0.00
<i>Eucalanus</i> sp. (juveniles)	Copepoda	1.27	0.00	0.00	0.00	0.00	0.00	0.00	0.00	0.00	0.00	0.00	0.00	0.00	0.00	0.00
<i>Eucalanus spinifer</i>	Copepoda	0.00	0.80	0.00	0.00	0.00	0.00	0.00	0.00	0.00	0.00	0.00	0.00	0.00	0.00	0.00
<i>Euchaeta acuta</i>	Copepoda	0.00	0.00	0.00	0.00	0.00	1.60	0.80	0.00	0.00	2.50	0.00	0.00	0.00	0.00	1.70
<i>Haloptilus longicornis</i>	Copepoda	0.00	0.00	1.82	0.38	0.00	4.00	1.30	0.90	4.20	13.60	1.53	2.12	1.27	1.27	2.55

<i>Haloptilus</i> spp.	Copepoda	0.76	4.78	0.00	0.00	0.80	1.60	0.00	0.00	0.00	0.00	0.00	0.00	0.00	0.00	0.00
<i>Heterorhabdus norvegicus</i>	Copepoda	0.00	0.00	0.00	0.00	0.00	0.00	0.00	0.00	0.00	0.00	0.00	0.42	0.00	0.00	0.00
<i>Heterorhabdus</i> sp.	Copepoda	0.00	0.80	0.00	0.00	0.00	0.00	0.00	0.00	0.80	0.00	0.00	0.00	0.00	0.00	0.00
<i>Heterorhabdus spinifer</i>	Copepoda	0.00	0.00	0.00	0.00	0.00	0.00	0.00	0.00	0.00	0.00	0.00	0.00	0.25	0.00	0.00
<i>Ischnocalanus tenuis</i>	Copepoda	0.25	0.00	0.36	0.00	0.00	0.00	0.00	0.30	0.40	3.40	0.25	0.64	0.00	0.42	0.00
<i>Isias clavipes</i>	Copepoda	0.00	0.00	0.00	0.00	0.00	0.00	0.00	0.00	0.00	0.00	0.25	0.00	0.00	0.00	0.00
<i>Lubbockia</i> sp.	Copepoda	0.00	6.37	1.27	0.10	0.30	0.80	0.80	0.10	0.00	0.00	0.00	0.21	0.00	0.85	4.20
<i>Lucicutia curta</i>	Copepoda	0.00	0.00	0.00	0.00	0.00	1.60	0.00	0.00	0.20	0.80	0.00	0.00	0.00	0.00	5.94
<i>Lucicutia flavicornis</i>	Copepoda	1.53	17.52	0.55	0.00	0.60	0.00	7.40	1.50	7.00	11.90	2.80	4.88	0.76	11.46	0.00
<i>Macrosetella gracillis</i>	Copepoda	0.00	2.39	0.55	0.50	0.50	6.40	2.30	0.30	1.30	5.10	0.00	0.21	0.00	0.00	0.00
<i>Mecynocera clausi</i>	Copepoda	1.53	6.37	2.37	0.51	0.40	0.80	1.00	0.60	1.50	4.20	0.51	0.00	0.00	5.94	0.00
<i>Mesocalanus tenuicornis</i>	Copepoda	0.00	7.17	0.55	0.00	0.60	1.60	3.30	0.60	1.70	5.10	0.00	0.85	0.00	5.52	1.70
<i>Metridia</i> spp.	Copepoda	0.00	1.59	0.00	0.00	0.30	0.00	0.00	0.00	0.00	0.00	0.00	0.00	0.00	0.00	0.00
<i>Microcalanus pygmaeus</i>	Copepoda	0.00	0.00	0.00	0.00	0.00	0.00	0.00	0.00	0.20	0.00	0.00	0.00	0.00	0.00	0.00
<i>Microsetella norvegica</i>	Copepoda	0.00	1.59	0.00	0.00	0.00	3.20	0.00	0.10	0.40	0.80	0.25	0.21	0.00	0.00	0.85
<i>Miracia efferata</i>	Copepoda	0.00	0.00	0.00	0.00	0.00	0.00	0.00	0.10	0.60	0.80	0.00	0.00	0.00	0.00	0.00
<i>Mormonilla phasma</i>	Copepoda	0.00	0.00	0.00	0.00	0.00	0.00	0.00	0.00	0.00	0.00	0.00	0.00	0.25	0.00	0.00
<i>Nannocalanus minor</i>	Copepoda	1.27	2.39	0.00	0.80	0.30	0.00	2.00	0.10	0.40	0.00	0.00	0.00	0.00	0.00	4.25
<i>Neocalanus gracilis</i>	Copepoda	0.00	0.00	0.00	0.00	0.00	0.00	0.00	0.00	0.00	0.00	0.00	0.00	0.00	0.85	0.00
<i>Neocalanus robustior</i>	Copepoda	0.00	0.00	0.00	0.13	0.00	0.00	0.30	0.10	0.20	0.00	0.00	0.00	0.00	0.00	1.70
<i>Oculosetella gracilis</i>	Copepoda	0.25	0.00	0.00	0.00	0.10	0.00	0.50	0.00	0.40	0.80	0.00	0.21	0.00	0.00	0.00
<i>Oithona nana</i>	Copepoda	0.00	0.00	0.00	0.00	0.00	0.00	0.30	0.00	0.00	0.00	0.00	0.42	0.00	0.00	0.00
<i>Oithona plumifera</i>	Copepoda	14.27	96.34	9.65	4.08	6.10	20.00	2.80	0.30	0.40	2.50	0.00	0.00	0.00	0.00	0.00
<i>Oithona setigera</i>	Copepoda	0.00	1.59	0.00	0.00	0.00	0.00	0.80	0.00	0.00	1.70	0.25	0.00	0.00	0.42	0.85
<i>Oithona</i> spp.	Copepoda	0.00	0.00	2.37	1.78	2.40	41.30	20.90	11.70	59.40	132.50	10.19	0.00	9.17	59.45	74.73
<i>Oncaea frosti</i>	Copepoda	0.00	0.00	0.00	0.00	0.00	0.00	0.00	0.00	0.00	0.00	0.00	0.00	0.00	2.20	22.10
<i>Oncaea media</i>	Copepoda	0.76	0.00	0.55	0.00	0.00	0.00	1.30	0.00	0.00	0.80	0.00	0.00	0.00	1.27	0.00
<i>Oncaea</i> spp.	Copepoda	1.02	44.59	0.73	0.40	0.40	1.60	1.50	0.30	0.20	0.80	1.27	4.46	1.02	2.90	10.20

<i>Oncaea venusta</i>	Copepoda	0.25	4.78	0.00	0.00	0.00	0.00	0.00	0.00	0.00	0.00	0.00	0.00	0.00	0.00	0.00
<i>Onychocorycaeus latus</i>	Copepoda	0.00	0.00	0.18	0.00	0.00	0.00	0.00	0.00	0.00	0.00	0.00	0.00	0.00	0.00	0.00
<i>Onychocorycaeus ovalis</i>	Copepoda	0.00	0.00	0.00	0.00	0.00	0.00	0.30	0.00	0.00	0.00	0.25	0.00	0.00	0.00	0.00
<i>Paracalanus denudatus</i>	Copepoda	0.00	0.00	0.00	0.00	0.00	0.00	0.00	0.00	0.00	0.80	0.00	0.00	0.51	1.27	0.00
<i>Paracalanus parvus</i>	Copepoda	3.82	7.96	0.91	0.00	0.00	2.40	1.50	0.10	0.00	0.00	0.00	0.00	0.00	5.52	1.70
<i>Paracalanus</i> sp.	Copepoda	0.00	0.00	0.00	0.00	0.00	0.00	0.00	0.00	0.00	0.00	0.00	0.42	0.51	0.00	2.55
<i>Paraeuchaeta gracilis</i>	Copepoda	0.00	0.00	0.00	0.00	0.00	0.00	0.00	0.00	0.00	0.00	0.00	0.00	0.00	0.00	2.55
<i>Paraeuchaeta hebes</i>	Copepoda	0.00	0.00	0.00	0.00	0.00	0.00	0.00	0.00	0.00	0.00	0.00	0.00	0.00	1.27	0.00
<i>Paraeuchaeta</i> spp. (juveniles)	Copepoda	0.00	0.00	0.00	0.00	0.00	0.00	1.50	0.30	0.20	1.70	0.25	0.42	0.00	0.00	0.00
<i>Phaena spinifera</i>	Copepoda	0.00	0.00	0.50	0.00	0.10	0.00	0.50	0.00	0.00	0.00	0.00	0.00	0.00	0.00	0.00
<i>Pleuromamma</i> spp. (juveniles)	Copepoda	0.25	0.00	0.00	0.00	0.00	0.00	0.00	0.00	0.00	0.00	0.00	0.00	0.00	0.00	0.00
<i>Pleuromamma gracilis</i>	Copepoda	0.00	0.00	0.00	0.13	0.00	0.00	0.00	0.00	0.00	0.00	0.00	0.00	0.00	0.00	0.00
<i>Pleuromamma robusta</i>	Copepoda	0.00	0.00	0.00	0.00	0.00	0.00	0.00	0.00	0.00	0.00	0.00	0.00	0.25	0.00	0.00
<i>Pontellina plumata</i>	Copepoda	0.51	0.00	0.00	0.00	0.00	0.00	0.00	0.00	0.00	0.00	0.00	0.00	0.00	0.00	0.00
<i>Rhincalanus nasutus</i>	Copepoda	0.51	3.98	0.00	0.00	0.00	0.00	0.00	0.00	0.00	0.00	0.00	0.00	0.00	0.42	0.00
<i>Sapphirina angusta</i>	Copepoda	0.00	0.00	0.00	0.00	0.00	0.00	0.00	0.00	0.00	0.00	0.25	0.00	0.00	0.00	0.00
<i>Sapphirina opalina</i>	Copepoda	0.00	0.80	0.00	0.00	0.00	0.00	0.00	0.00	0.00	0.00	0.00	0.00	0.00	0.00	0.00
<i>Sapphirina</i> spp.	Copepoda	0.00	1.59	0.00	0.00	0.00	0.00	0.30	0.00	0.00	0.00	0.00	0.00	0.00	0.00	0.00
<i>Scolecithricella dentata</i>	Copepoda	0.30	0.00	0.36	0.00	0.00	0.00	0.30	0.00	0.20	0.00	0.00	0.00	0.00	0.42	0.00
<i>Scolecithricella</i> sp.	Copepoda	0.00	0.00	0.00	0.00	0.00	0.00	0.00	0.00	0.00	0.00	0.25	0.21	0.00	0.00	0.00
<i>Scolecithrix brady</i>	Copepoda	0.30	0.00	0.00	0.00	0.00	0.80	0.00	0.00	0.20	0.00	0.00	0.00	0.00	0.42	0.85
<i>Scolecithrix danae</i>	Copepoda	0.00	0.00	0.00	0.00	0.00	0.00	0.00	0.00	0.00	0.00	0.00	0.00	0.00	1.27	0.85
<i>Scolecithricella ovata</i>	Copepoda	0.00	0.80	0.00	0.00	0.00	0.00	0.00	0.00	0.00	0.00	0.00	0.00	0.00	0.00	0.00
<i>Subeucalanus crassus</i>	Copepoda	0.00	0.00	0.18	0.00	0.00	0.00	0.00	0.00	0.00	0.00	0.00	0.00	0.00	0.00	0.00
<i>Temora</i> sp. (juveniles)	Copepoda	0.00	0.00	0.00	0.00	0.00	0.00	0.00	0.00	0.00	0.00	0.00	0.42	0.00	0.00	0.00
<i>Temora stylifera</i>	Copepoda	1.53	0.00	0.00	0.00	0.00	0.00	0.00	0.00	0.00	0.00	0.00	0.00	0.00	0.00	2.55
<i>Temoropia mayunbaensi</i>	Copepoda	0.00	0.00	0.00	0.00	0.00	0.00	0.00	0.00	1.50	0.00	0.00	0.21	0.00	0.42	0.00
<i>Triconia conifera</i>	Copepoda	0.00	0.00	0.00	0.00	0.10	0.00	0.00	0.00	0.00	0.00	0.00	0.00	0.00	0.00	0.00

<i>Undinula vulgaris</i>	Copepoda	0.00	0.00	0.00	0.00	0.00	0.00	0.00	0.00	0.00	1.70	0.00	0.00	0.00	0.00	0.00
<i>Urocorycaeus</i> sp.	Copepoda	0.00	0.00	0.00	0.00	0.00	0.00	0.00	0.00	0.20	0.00	0.00	0.00	0.00	0.00	0.00
Decapoda (larvae)	Decapoda	0.76	3.98	0.36	0.00	0.10	0.80	1.30	0.10	1.30	0.80	0.00	1.06	0.00	1.27	2.55
<i>Lucifer</i> sp. (larvae)	Decapoda	0.25	0.00	0.00	0.00	0.00	0.00	0.00	0.00	0.00	0.00	0.00	0.00	0.00	0.00	0.00
Doliolida	Doliolida	2.04	2.39	0.36	0.00	0.10	0.00	1.30	0.60	0.60	5.10	0.00	0.64	0.00	0.85	0.00
Echinodermata (larvae)	Echinodermata	0.00	0.00	0.00	0.00	0.00	2.40	0.30	0.50	0.00	2.50	0.25	0.00	0.25	2.97	2.55
Euphausiacea (other)	Euphausiacea	0.00	1.59	0.18	0.00	0.00	0.00	0.00	0.00	0.00	0.00	0.00	0.21	0.00	0.00	0.00
Euphausiacea (larvae)	Euphausiacea	0.00	0.80	0.55	0.25	0.30	0.00	1.30	0.40	0.80	3.40	0.00	0.42	0.00	0.42	1.70
Branchiostomatidae (larvae)	Fish	0.00	0.00	0.00	0.00	0.00	0.00	0.00	0.00	0.00	0.00	0.00	0.21	0.00	0.00	0.00
Fish (eggs)	Fish	0.00	0.00	0.00	0.00	0.00	0.00	0.00	0.00	0.20	0.00	0.00	0.00	0.00	1.70	0.00
Fish (larvae)	Fish	0.00	0.00	0.00	0.00	0.00	0.00	0.00	0.00	0.40	0.00	0.00	0.00	1.00	1.27	0.00
Foraminifera	Foraminifera	1.53	14.33	1.09	0.00	0.51	2.40	1.30	0.40	0.60	0.00	0.00	0.21	0.51	0.00	0.00
Gastropoda (larvae)	Gastropoda	0.51	1.59	0.36	0.13	0.10	0.00	1.00	0.00	0.60	0.00	1.02	1.06	0.51	1.27	2.55
<i>Conchoecia</i> spp.	Ostracoda	1.78	15.13	1.27	0.00	0.51	3.20	2.80	0.60	3.40	1.70	1.02	2.76	1.02	10.19	5.94
Alciopidae (larvae)	Polychaeta	0.00	0.00	0.00	0.00	0.10	0.00	0.30	0.00	0.00	0.00	0.00	0.00	0.00	0.00	0.00
Polychaeta (other larvae)	Polychaeta	0.00	0.00	0.00	0.00	0.00	0.00	0.00	0.10	0.20	0.00	0.00	0.64	0.00	3.40	5.10
<i>Tomopteris</i> sp. (larvae)	Polychaeta	0.00	0.80	0.00	0.00	0.00	0.00	0.30	0.00	0.20	0.00	0.00	0.00	0.00	0.00	0.00
Pteropoda	Pteropoda	0.00	0.80	0.00	0.00	0.00	0.00	0.30	0.40	0.00	0.80	0.00	0.21	0.51	0.00	0.00
Salpida	Salpida	0.00	0.80	0.00	0.00	0.00	5.60	0.30	0.10	0.00	0.00	0.00	1.27	0.00	1.70	1.70
Siphonophora	Siphonophora	12.74	11.15	0.55	0.76	0.80	3.20	2.80	1.30	4.70	4.20	0.76	2.76	1.02	7.22	9.34