

# Enhancing Prostate and Bladder Cancer Treatment: Exploring the Synergistic Potential of Entecavir and 5-Fluorouracil Combinations

Tânia Lourenço <sup>1,2,3</sup>, Lara Marques <sup>1,2,4</sup>, Eduarda Ribeiro <sup>1,2,5</sup> and Nuno Vale <sup>1,2,4,\*</sup>

<sup>1</sup> PerMed Research Group, Center for Health Technology and Services Research (CINTESIS),  
Rua Doutor Plácido da Costa, 4200-450 Porto, Portugal;

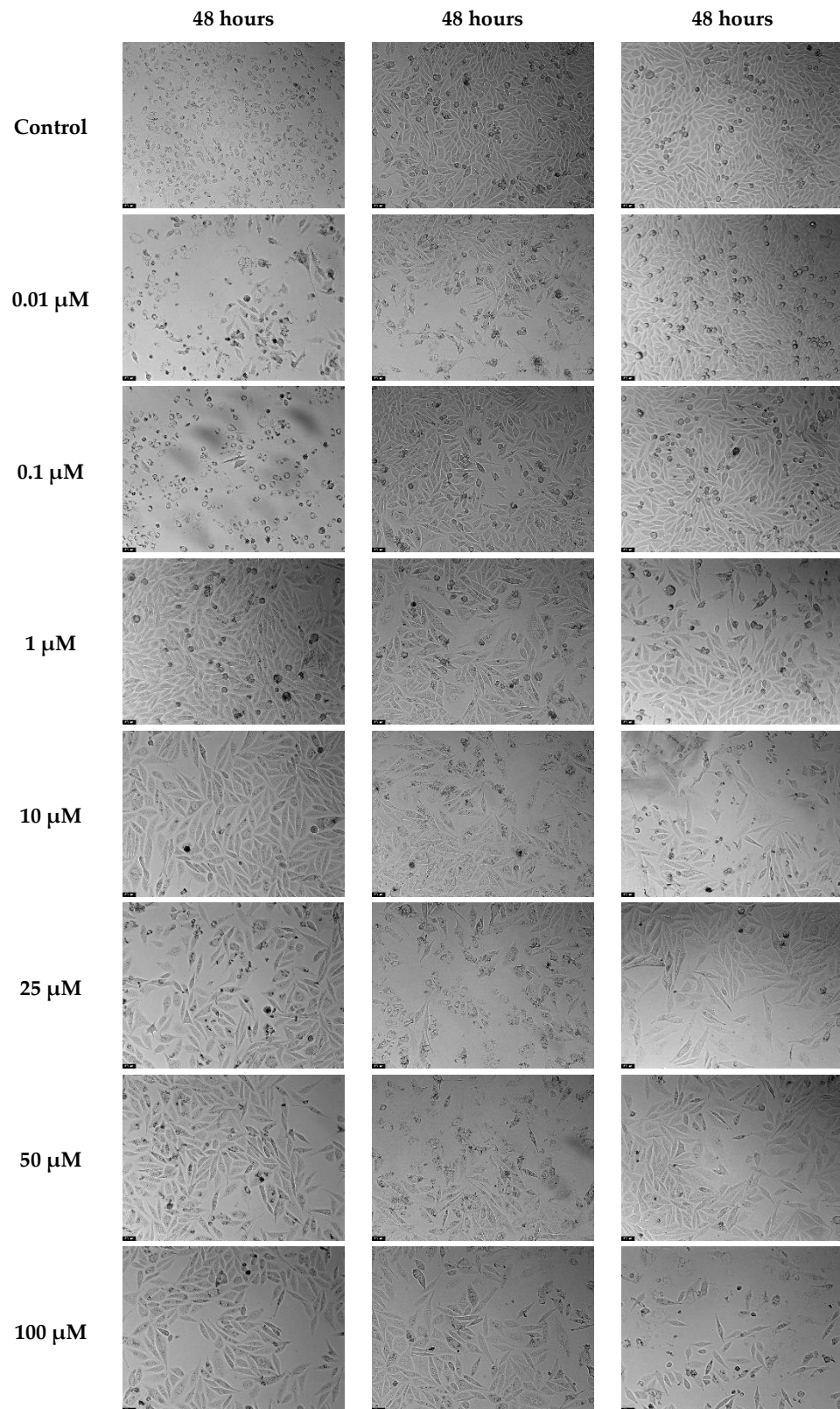
<sup>2</sup> CINTESIS@RISE, Faculty of Medicine, University of Porto, Alameda Professor  
Hernâni Monteiro, 4200-319 Porto, Portugal;

<sup>3</sup> Faculty of Pharmacy, University of Porto, Rua Jorge Viterbo Ferreira, 228, 4050-313 Porto, Portugal

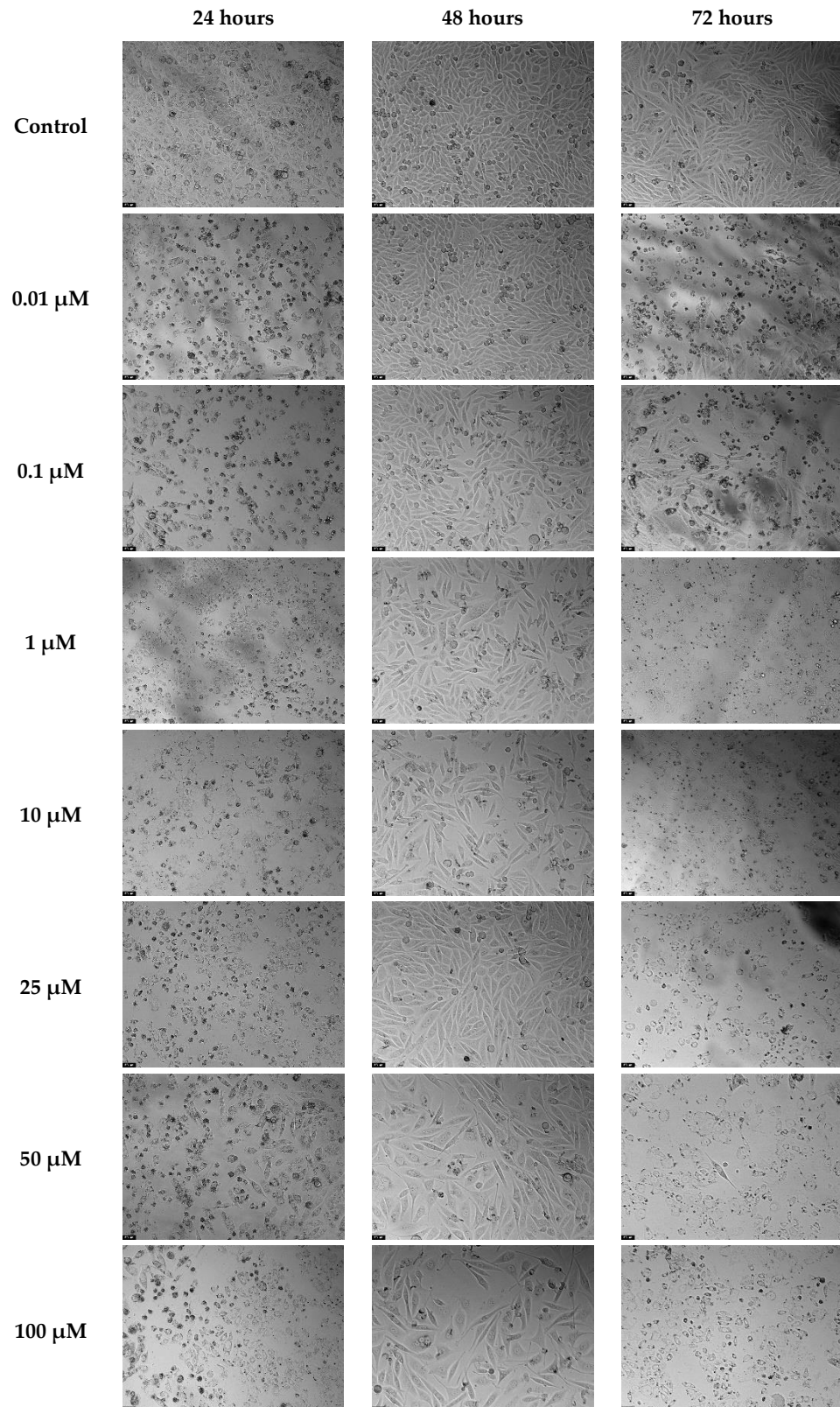
<sup>4</sup> Department of Community Medicine, Information and Health Decision Sciences (MEDCIDS), Faculty of Medicine, University of Porto, Rua Doutor Plácido da Costa, 4200-450 Porto, Portugal

<sup>5</sup> ICBAS - School of Medicine and Biomedical Sciences, University of Porto, Rua Jorge Viterbo Ferreira, 228, 4050-313 Porto, Portugal

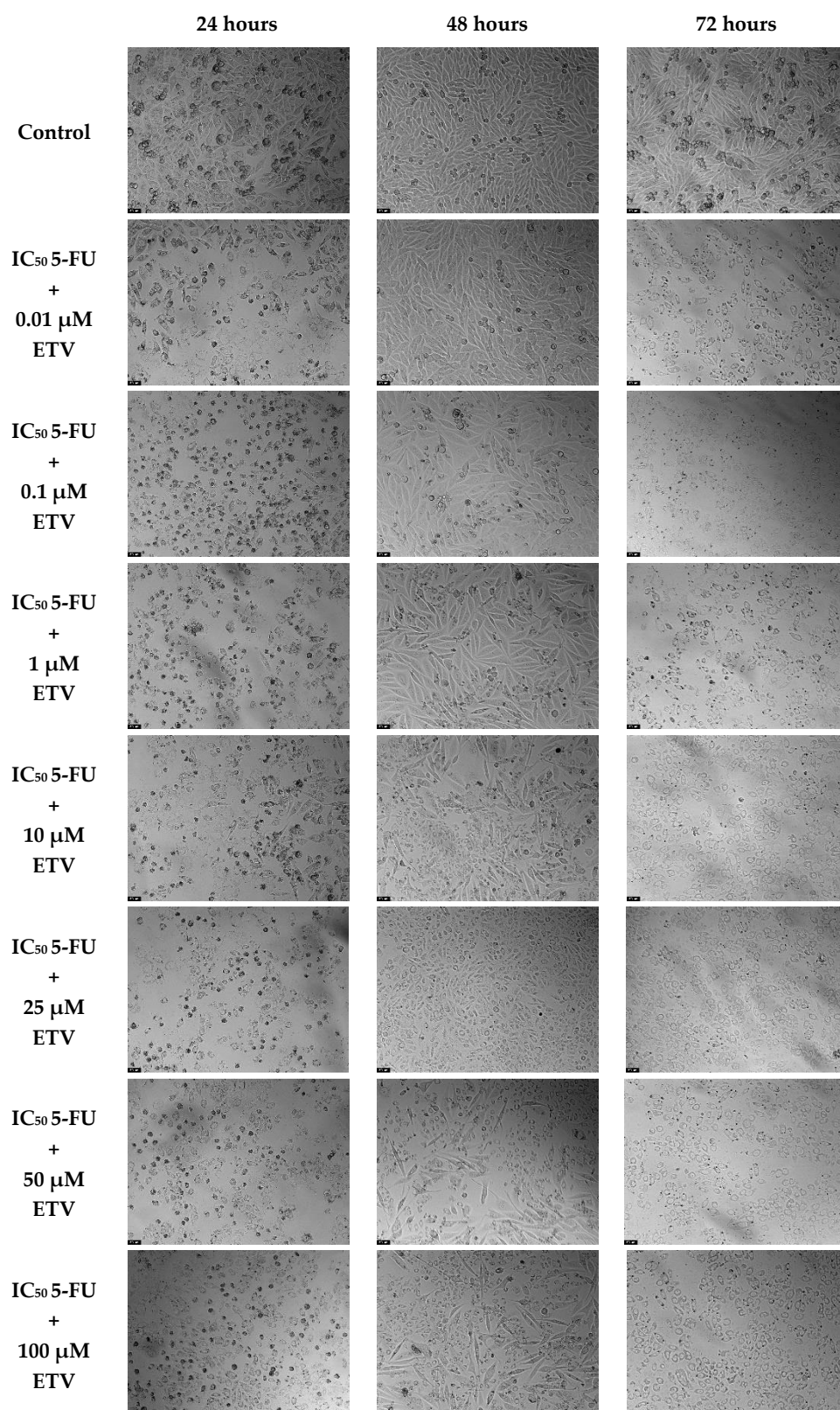
\* Correspondence: [nunovale@med.up.pt](mailto:nunovale@med.up.pt); Tel.: +351-220426537



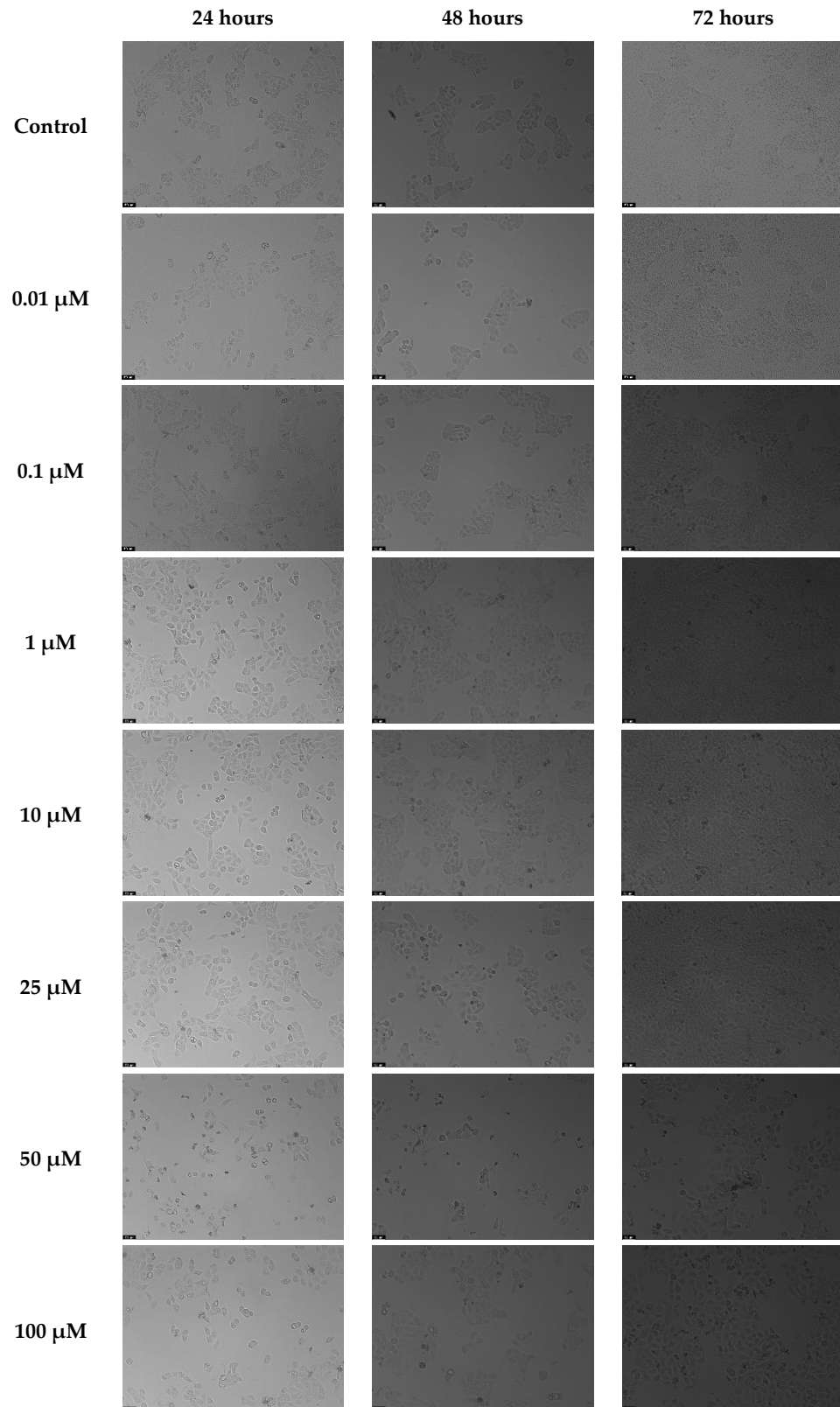
**Figure S1.** Morphological evaluations of PC-3 cells after exposure to increasing concentrations of 5-FU (0.01-100  $\mu\text{M}$ ) for 48 hours. These results are representative of three independent experiments for 48 hours. Control cells were treated with a concentration of 0.1% DMSO (vehicle). The scale bar is 50  $\mu\text{m}$ .



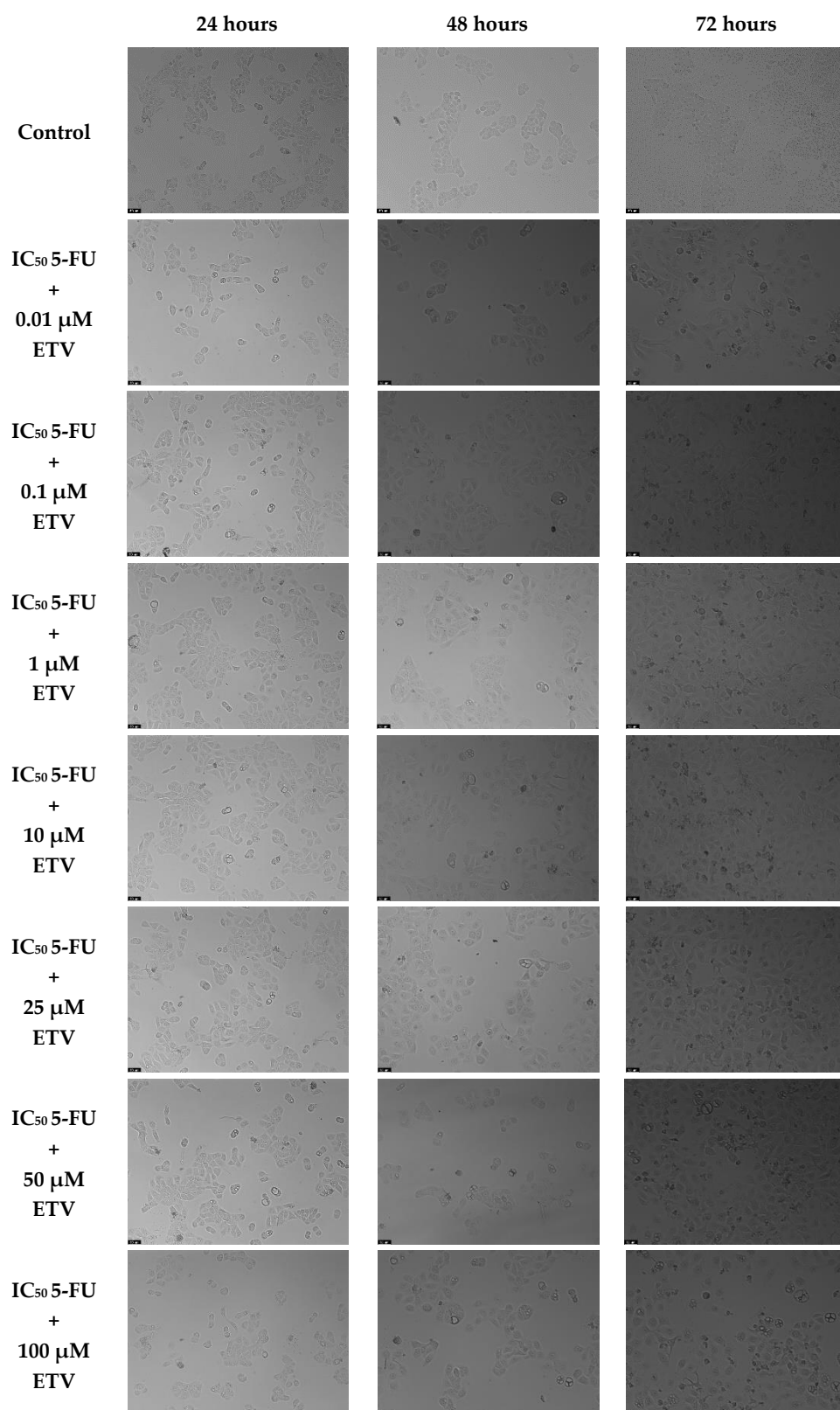
**Figure S2.** Morphological evaluations of PC-3 cells after exposure to increasing concentrations of ETV (0.01-100  $\mu\text{M}$ ) for 24, 48, and 72 hours. These results are representative of three independent experiments for 24, 48, and 72 hours. Control cells were treated with a concentration of 0.1% DMSO (vehicle). The scale bar is 50  $\mu\text{m}$ .



**Figure S3.** Morphological evaluations of PC-3 cells after exposure to the combination of the IC<sub>50</sub> value of 5-FU (3.22  $\mu$ M) with increasing concentrations of ETV (0.01-100  $\mu$ M) added simultaneously and evaluated after 24, 48, and 72 hours. These results are representative of three independent experiments for 24, 48, and 72 hours. Control cells were treated with a concentration of 0.1% DMSO (vehicle). The scale bar is 50  $\mu$ m.



**Figure S4.** Morphological evaluations of UM-UC-5 cells after exposure to increasing concentrations of ETV (0.01-100  $\mu\text{M}$ ) for 24, 48, and 72 hours. These results are representative of three independent experiments for 24, 48, and 72 hours. Control cells were treated with a concentration of 0.1% DMSO (vehicle). The scale bar is 50  $\mu\text{m}$ .



**Figure S5.** Morphological evaluations of UM-UC-5 cells after exposure to the combination of the IC<sub>50</sub> value of 5-FU (13.41  $\mu$ M) with increasing concentrations of ETV (0.01-100  $\mu$ M) added simultaneously and evaluated after 24, 48, and 72 hours. These results are representative of three independent experiments for 24, 48, and 72 hours. Control cells were treated with a concentration of 0.1% DMSO (vehicle). The scale bar is 50  $\mu$ m.