

Supplementary Materials

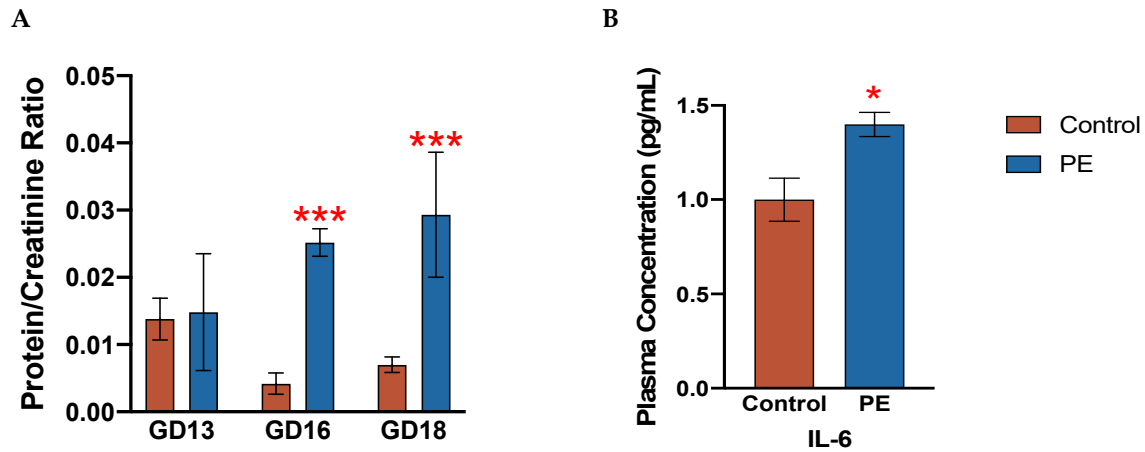


Figure S1. Confirmation of PE characteristics in the immunological rat model of PE. **A.** Urinary Total Protein:Creatinine Ratios. Urine was collected from PE and control rats ($n = 15-16/\text{group}$) at baseline on GD13, and after induction of PE on GD16, and GD18. **B.** IL-6 Serum Concentrations. Protein levels of IL-6 were measured in serum obtained from PE and control dams by ELISA. Data is presented as mean \pm S.D. ($n = 15-16/\text{group}$). Significance was determined using Student's unpaired t -test (* $p < 0.05$, ** $p < 0.01$, *** $p < 0.001$).

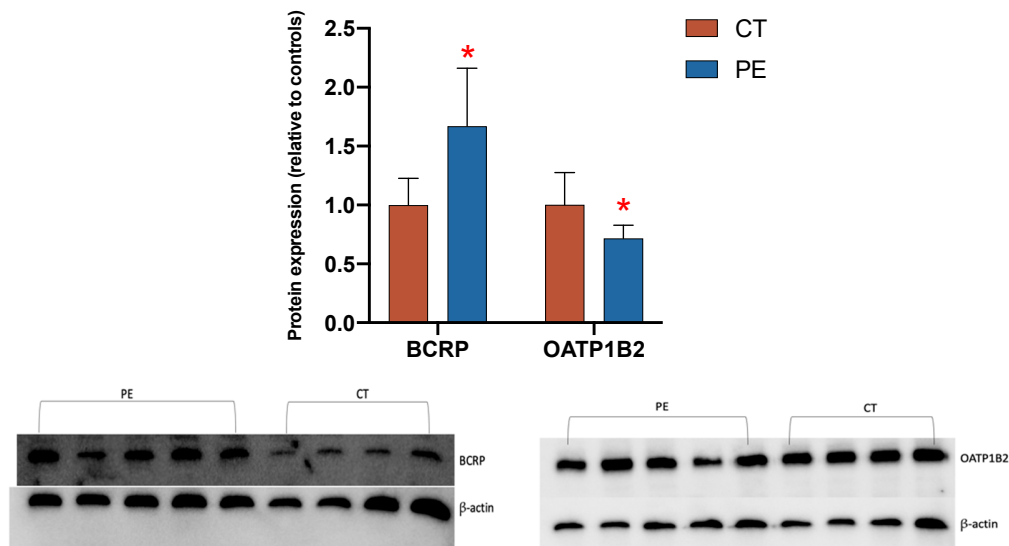


Figure S2. Hepatic protein expression of Bcrp and Oatp1b2. Protein expression in control and PE dams was measured by western blot assay and normalized to β -actin level. Data is presented as mean \pm S.D. ($n = 15-16/\text{group}$). Significance was determined using Student's unpaired t -test (* $p < 0.05$). Representative blots are shown below the graph.

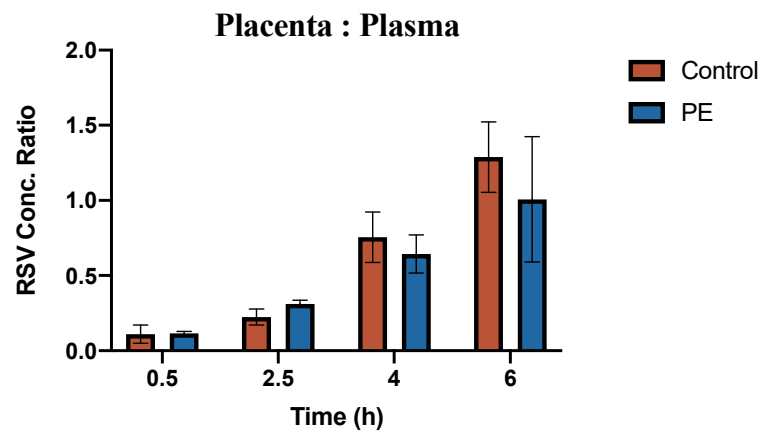


Figure S3. Rosuvastatin placenta:plasma concentration ratio in control rats and PE rats. The concentrations of RSV in the placenta (ng/g) was normalized to the concentration of RSV in maternal plasma (ng/ml) at the same time point and are shown as placenta:plasma concentration ratio ($n = 3-4$ /group). RSV concentrations were determined as described in methods and are presented as mean \pm S.D. Significance was determined using Student's unpaired t -test (* $p < 0.05$; ** $p < 0.01$).